



SCALE: 1" = 40'

NORTH

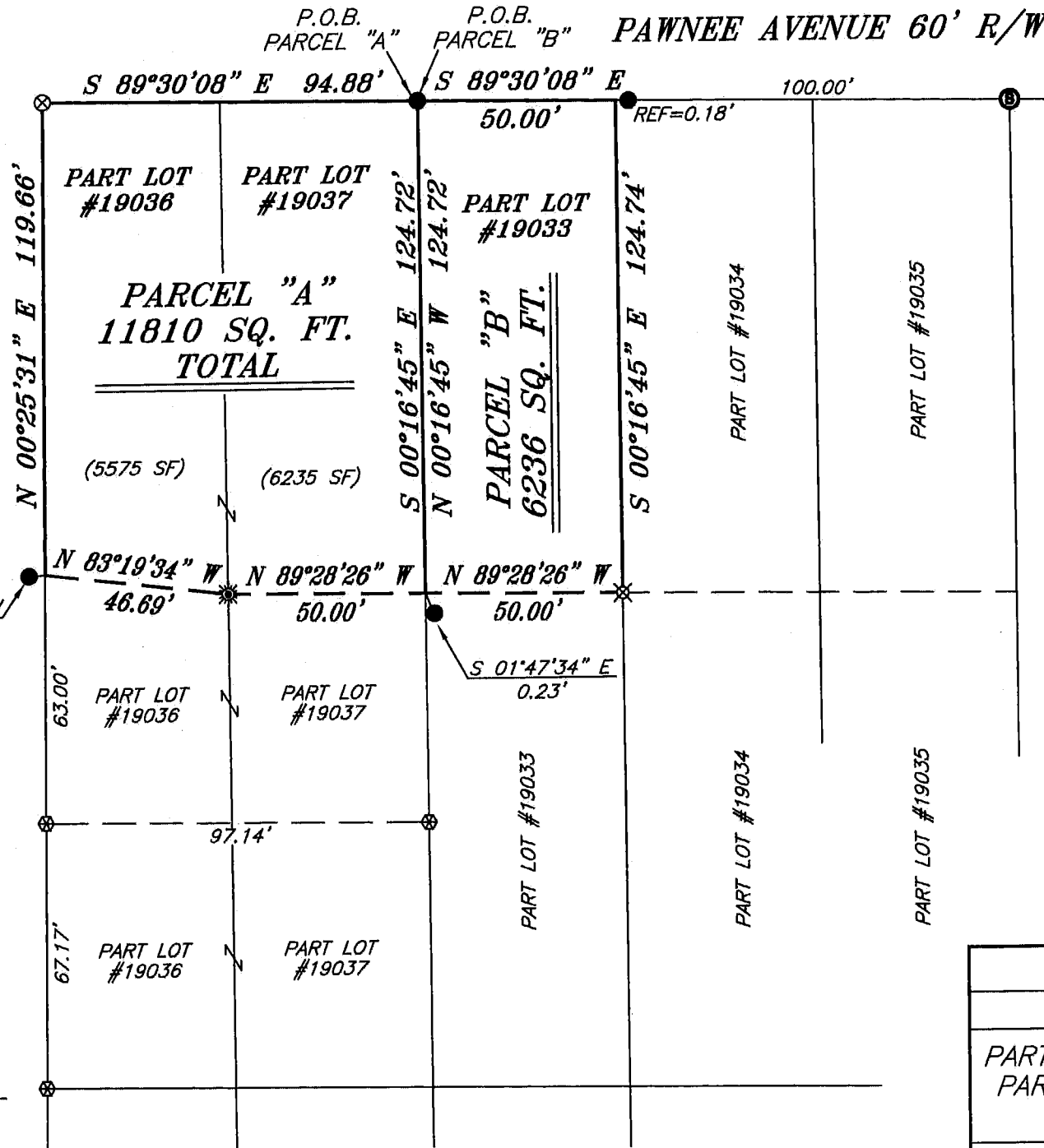


BEARINGS ARE BASED ON SURVEY 0-21 ON FILE AT THE RICHLAND COUNTY TAX MAP OFFICE AND ARE INTENDED TO BE USED FOR ANGULAR DETERMINATION ONLY

NEW SURVEY OF EXISTING PARCEL RICHLAND COUNTY TAX MAP OFFICE

EAK 1-27-16  
INITIAL DATE  
II-19

DELPH AVENUE  
30' R/W



**LEGEND**

- IRON PIN FOUND
- ⊗ DRILL HOLE FOUND
- ⊗ 3" SURVEY MARKER SET
- ⊗ IRON PIN FOUND "VILLAGE ENGINEERING"
- ⊗ IRON PIN FOUND "SEILER 4421"
- ⊗ 5/8" IRON PIN SET WITH CAP STAMPED "CRAIG 8195"



*Chad F. Craig*

SURVEY BY: CHAD F. CRAIG P.S., #8195  
for SEILER & CRAIG SURVEYING INC.  
270 PARK AVENUE WEST  
MANSFIELD, OHIO 44902  
(419) 525-3644  
EMAIL: SEILERANDCRAIG@SEILERANDCRAIG.COM

SURVEY PLAT FOR	
PROPERTY TRANSFER	
PART LOT #19033, PART LOT #19036 & PART LOT #19037, CITY OF MANSFIELD RICHLAND COUNTY, OHIO	
DATE: JANUARY 18, 2016	SCALE: 1"=40'
PAWNEE_AVE_1243_1249	

**SEILER & CRAIG SURVEYING, INC.**

Chad F. Craig, P.S.  
270 Park Avenue West  
Mansfield, Ohio 44902  
419-525-3644  
Email: [seilerandcraig@seilerandcraig.com](mailto:seilerandcraig@seilerandcraig.com)  
[www.seilerandcraig.com](http://www.seilerandcraig.com)

**SURVEY DESCRIPTION  
PARCEL "A"**

PART LOT #19036 AND PART LOT #19037  
CITY OF MANSFIELD  
RICHLAND COUNTY, OHIO

Situated in the City of Mansfield, County of Richland, State of Ohio and being known as part Lot #19036 and part Lot #19037 of the consecutively numbered lots in said city, and being more particularly described as follows:

Beginning for the same at an iron pin found and accepted as marking the northeast corner of Lot #19037; Thence South 00 degrees 16 minutes 45 seconds East with the east line of said lot, 124.72 feet to a point referenced by an iron pin found on a bearing of South 01 degree 47 minutes 34 seconds East and at a distance of 0.23 feet;

Thence, North 89 degrees 28 minutes 26 seconds West 50.00 feet to a drill hole in pavement found;

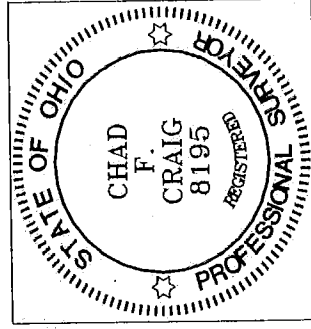
Thence, North 83 degrees 19 minutes 34 seconds West 46.69 feet to a point on the west line of Lot #19036 and referenced by an iron pin found on a bearing of South 86 degrees 15 minutes 49 seconds West and at a distance of 1.22 feet;

Thence, North 00 degrees 25 minutes 31 seconds East with said west line, 119.66 feet to a 3 inch survey marker set on the northwest corner of said lot;

Thence, South 89 degrees 30 minutes 08 seconds East with the north line of said lot and the easterly prolongation thereof, 94.88 feet to the place of beginning, containing a total of 11,810 square feet of which 5575 square feet are located within part Lot #19036 and 6235 square feet are located within part Lot #19037 according to survey by Chad F. Craig P.S. 8195 on January 18, 2016 but subject to all legal highways and easements of record.

Iron pins set are 5/8" rods with caps stamped "CRAIG 8195".

Bearings are based on Survey O-21 on file at the Richland County Tax Map Office and are intended to be used for angular determination only.



NEW SURVEY  
OF EXISTING PARCEL  
RICHLAND COUNTY  
TAX MAP OFFICE

EAK INITIAL  
1-27-16 DATE  
III-19

Chad F. Craig P.S. #8195  
Seiler and Craig Surveying, Inc.

**SEILER & CRAIG SURVEYING, INC.**

Chad F. Craig, P.S.  
270 Park Avenue West  
Mansfield, Ohio 44902  
419-525-3644  
Email: [seilerandcraig@seilerandcraig.com](mailto:seilerandcraig@seilerandcraig.com)  
[www.seilerandcraig.com](http://www.seilerandcraig.com)

**SURVEY DESCRIPTION  
PARCEL "B"**

PART LOT #19033  
CITY OF MANSFIELD  
RICHLAND COUNTY, OHIO

Situated in the City of Mansfield, County of Richland, State of Ohio and being known as part Lot #19033 of the consecutively numbered lots in said city, and being more particularly described as follows:

Beginning for the same at an iron pin found and accepted as marking the northwest corner of Lot #19033, Thence South 89 degrees 30 minutes 08 seconds East with the north line of said lot 50.00 feet to a point marking the northeast corner of said lot and referenced by an iron pin found on a bearing of South 89 degrees 30 minutes 08 seconds East at a distance of 0.18 feet;

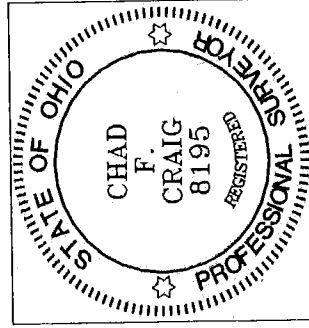
Thence South 00 degrees 16 minutes 45 seconds East with the east line of said lot 124.74 feet to an iron pin set;

Thence North 89 degrees 28 minutes 26 seconds West 50.00 feet to a point on the west line of said lot and referenced by an iron pin found on a bearing of South 01 degree 47 minutes 34 seconds East and at a distance of 0.23 feet;

Thence North 00 degrees 16 minutes 45 seconds West with said west line 124.72 feet to the place of beginning, containing 6,236 square feet according to survey by Chad F. Craig P.S. 8195 on January 18, 2016 but subject to all legal highways and easements of record.

Iron pins set are 5/8" rods with caps stamped "CRAIG 8195".

Bearings are based on Survey O-21 on file at the Richland County Tax Map Office and are intended to be used for angular determination only.



NEW SURVEY  
OF EXISTING PARCEL  
RICHLAND COUNTY  
TAX MAP OFFICE

EAC 1-27-16  
INITIAL DATE  
II-19

A handwritten signature of Chad F. Craig in black ink.

Chad F. Craig P.S. #8195

Seiler and Craig Surveying, Inc.