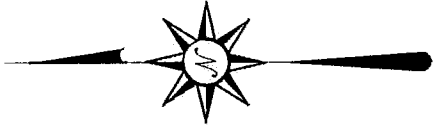


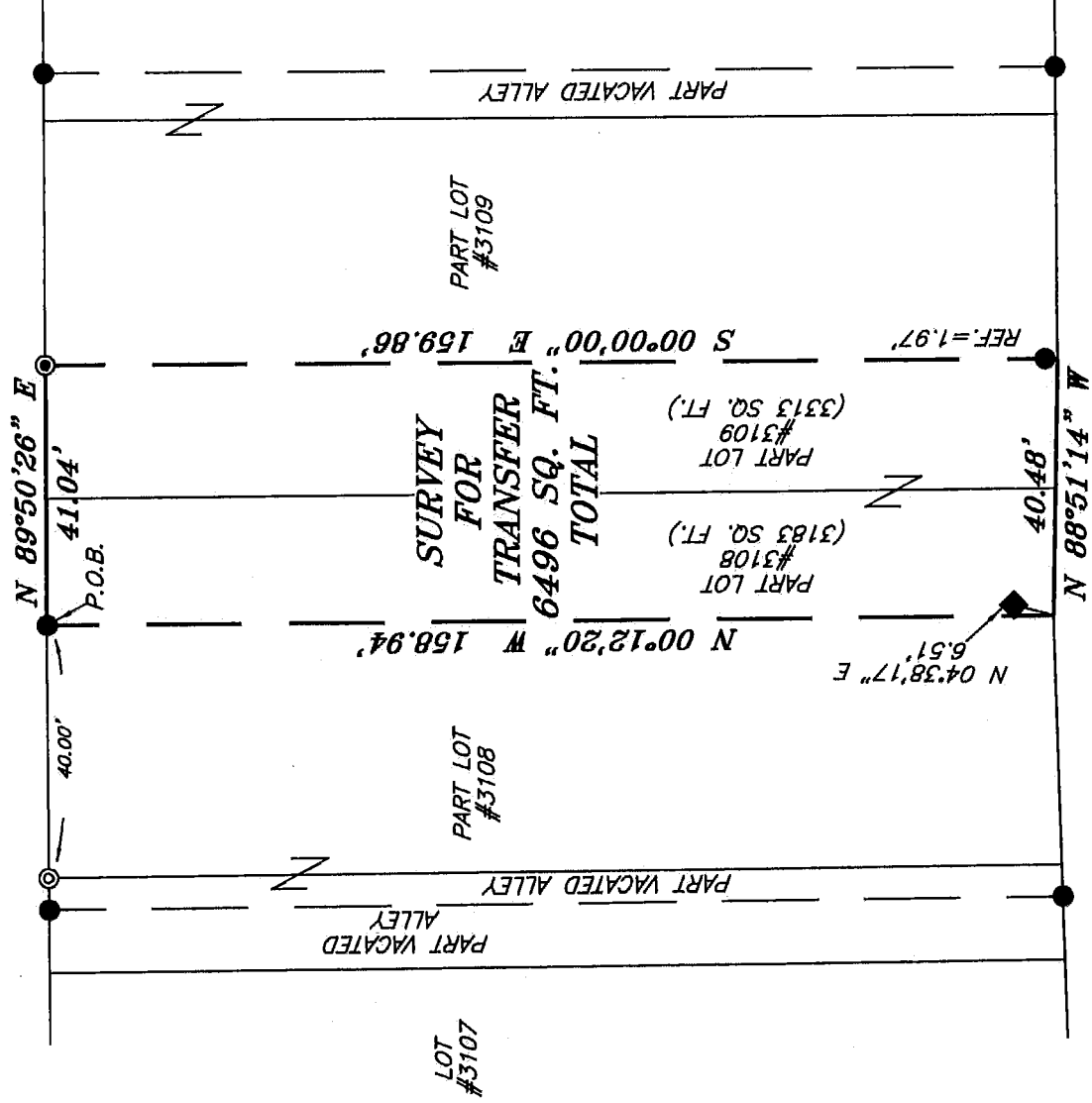


NORTH



BEARINGS ARE BASED ON SURVEY X-216  
ON FILE AT THE RICHLAND COUNTY TAX  
MAP OFFICE AND ARE INTENDED TO BE  
USED FOR ANGULAR DETERMINATION ONLY.

HIGHLAND AVENUE 60' R/W

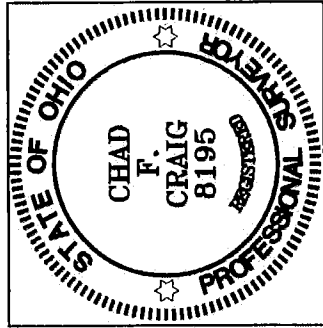


LEGEND

- IRON PIN FOUND
- ⊙ DRILL HOLE IN CONCRETE FOUND
- ⊙ IRON PIPE FOUND
- ◆ METAL "T" POST FOUND
- ⊗ 5/8" IRON PIN SET WITH CAP STAMPED "CRAIG 8195."

NEW SURVEY  
OF EXISTING PARCEL  
RICHLAND COUNTY  
TAX MAP OFFICE

EAK 1-8-16  
INITIAL DATE  
II-8



*Chad F. Craig*

SURVEY BY: CHAD F. CRAIG PS. 8195  
for SELLER & CRAIG SURVEYING INC.  
270 PARK AVENUE WEST  
MANSFIELD, OHIO 44902  
(419) 525-3644  
Email: [seilerandcraig@seilerandcraig.com](mailto:seilerandcraig@seilerandcraig.com)

SURVEY PLAT FOR  
BASIL MONASTRA

PART LOT #3108 AND PART LOT #3109  
CITY OF MANSFIELD  
RICHLAND COUNTY, OHIO

Date: JANUARY 5, 2016 SCALE: 1" = 30'  
HIGHLAND\_AVE\_585

**SEILER & CRAIG SURVEYING, INC.**

*Chad F. Craig, P.S.*  
270 Park Avenue West  
Mansfield, Ohio 44902  
419-525-3644  
Email: [seilerandcraig@seilerandcraig.com](mailto:seilerandcraig@seilerandcraig.com)  
[www.seilerandcraig.com](http://www.seilerandcraig.com)

**SURVEY DESCRIPTION**

PART LOT #3108 AND PART LOT #3109  
CITY OF MANSFIELD  
RICHLAND COUNTY, OHIO

Situated in the City of Mansfield, County of Richland, State of Ohio and being known as part Lot #3108 and part Lot #3109 of the consecutively numbered lots in said city, and being more particularly described as follows:

Commencing at a drill hole found in concrete marking the northwest corner of Lot #3108; Thence, North 89 degrees 50 minutes 26 seconds East with the north line of said lot, 40.00 feet to an iron pin found, the place of beginning of the parcel herein described;

Thence, continuing North 89 degrees 50 minutes 26 seconds East with said north line and the easterly prolongation thereof, 41.04 feet to an iron pipe found on the north line of Lot #3109;

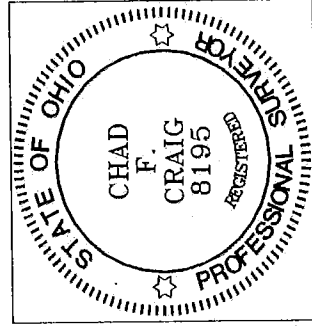
Thence, South 00 degrees 00 minutes 00 seconds East, passing through an iron pin found for reference at 157.89 feet, a total distance of 159.86 feet to a point on the south line of said lot;

Thence, North 88 degrees 51 minutes 14 seconds West with said south line and the westerly prolongation thereof, 40.48 feet to a point referenced by a "T" post found on a bearing of North 04 degrees 38 minutes 17 seconds East and at a distance of 6.51 feet;

Thence, North 00 degrees 12 minutes 20 seconds West 158.94 feet to the place of beginning, containing a total of 6,496 square feet, of which 3,183 square feet are located within part of Lot #3108 and 3,313 square feet are located within part of Lot #3109 according to survey by Chad F. Craig P.S. 8195 on January 5, 2016 but subject to all legal highways and easements of record.

Iron pins set are 5/8" rods with caps stamped "CRAIG 8195".

Bearings are based on Survey X-216 on file at the Richland County Tax Map Office and are intended to be used for angular determination only.



NEW SURVEY  
OF EXISTING PARCEL  
RICHLAND COUNTY  
TAX MAP OFFICE  
EAK 1-8-16  
INITIAL DATE  
III-8

Chad F. Craig P.S. #8195  
Seiler and Craig Surveying, Inc.