

I-6

I-63

I-63

### SURVEY PLAT

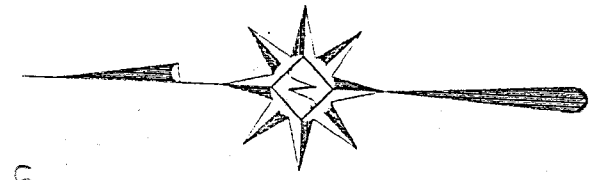
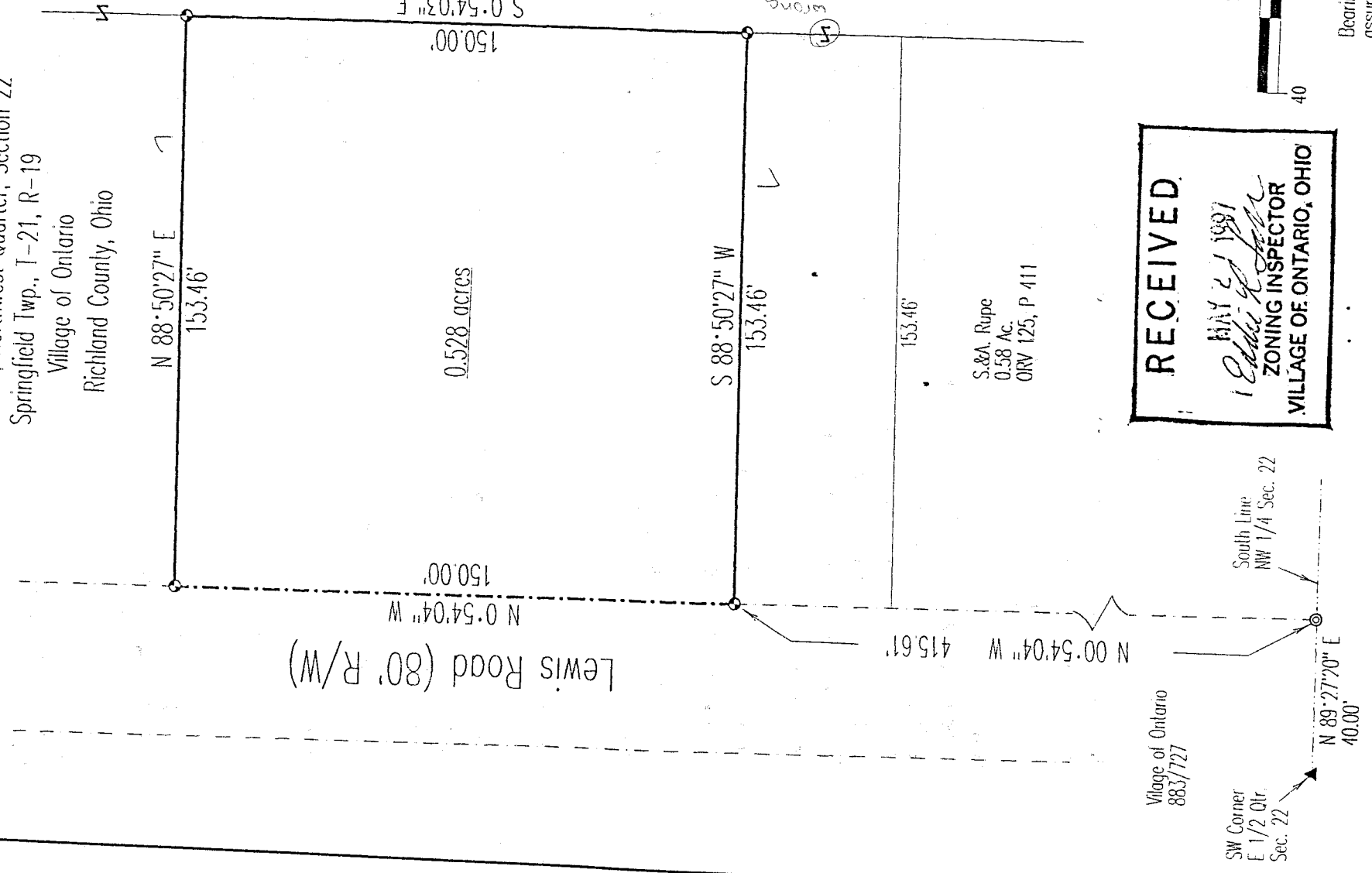
Part East Half, Northwest Quarter, Section 22  
Springfield Twp., T-21, R-19  
Village of Ontario  
Richland County, Ohio

Lewis Road (80' R/W)

W. & A. Musick  
20.87 Ac.  
ORV 145, P 661

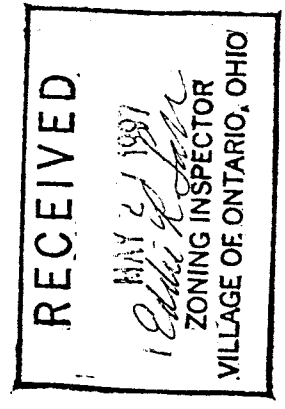
0.528 acres

S.&A. Rupe  
0.58 Ac.  
ORV 125, P 411



Scale 1" = 40'

Bearings are based on an assumed meridian.



### LEGEND

- Iron pin set with cap stamped "CLANCY 7178"
- ⊙ PK spike found
- ▲ Railroad Spike found



NEW SPLIT  
TAX MAP APPROVED  
EAC 5-28-97  
INITIAL DATE

*Warne R. Clancy*  
Warne R. Clancy  
P.S. 7178

DATE: 5/22/97  
JOB NO.: W051997

I-63

SURVEY DESCRIPTION

PART EAST 1/2, NW QUARTER SECTION 22  
SPRINGFIELD TOWNSHIP, T-21, R-19  
VILLAGE OF ONTARIO  
RICHLAND COUNTY, OHIO

Situated in the Village of Ontario, Township of Springfield, County of Richland, State of Ohio, and being a part of the East Half of the Northwest Quarter of Section 22 of Township 21, Range 19, more particularly described as follows:

Commencing at a railroad spike found marking the southwest corner of said half quarter section, the same being the southwest corner of a 0.85 acre parcel owned by the Village of Ontario (883/727); thence, North 89 degrees 27 minutes 20 seconds East with the south line of said half quarter, a distance of 40.00 feet to a Pk found at the southeast corner of said 0.85 acres; Thence, North 00 degrees 54 minutes 04 seconds West with the east line of said 0.85 acres, a distance of 415.61 feet to an iron pin set, the Place of Beginning;

Thence, continuing with said east line North 00 degrees 54 minutes 04 seconds West, a distance of 150.00 feet to an iron pin set;

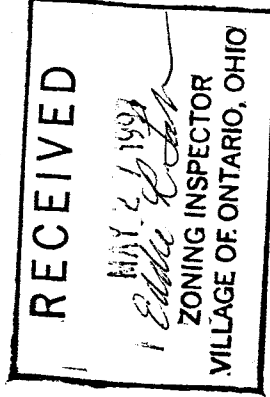
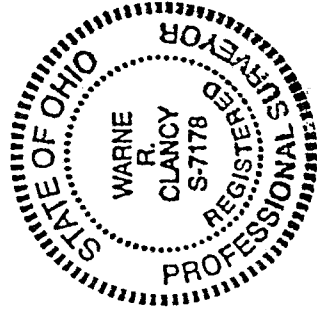
Thence, North 88 degrees 50 minutes 27 seconds East, a distance of 153.46 feet to an iron pin set;

Thence, South 00 degrees 54 minutes 03 seconds East, a distance of 150.00 feet to an iron pin set;

Thence, South 88 degrees 50 minutes 27 seconds West, a distance of 153.46 feet to the Place of Beginning, containing 0.528 acres according to survey by Warne R. Clancy, Professional Surveyor #7178, on May 19, 1997.

Iron pins set are 5/8" rebars with caps stamped "CLANCY 7178".

Bearings are based on an assumed meridian.



*Warne R. Clancy*  
Warne R. Clancy  
Professional Surveyor #7178

I-63

NEW SPLIT  
TAX MAP APPROVED  
EAR 5-28-97  
INITIAL DATE