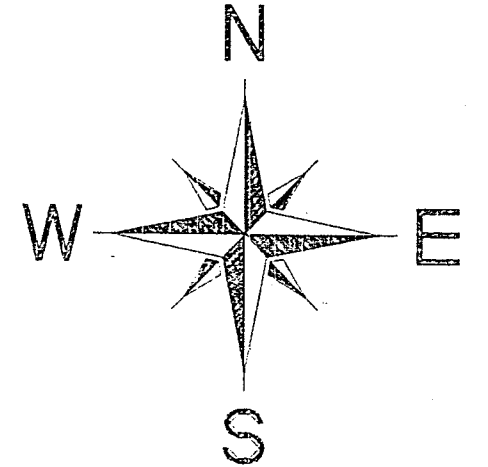


HGH-H

# SURVEY PLAT

For Jacob Campbell  
Part Southeast Quarter, Section 22  
Monroe Township, T-22, R-17  
Richland County, Ohio

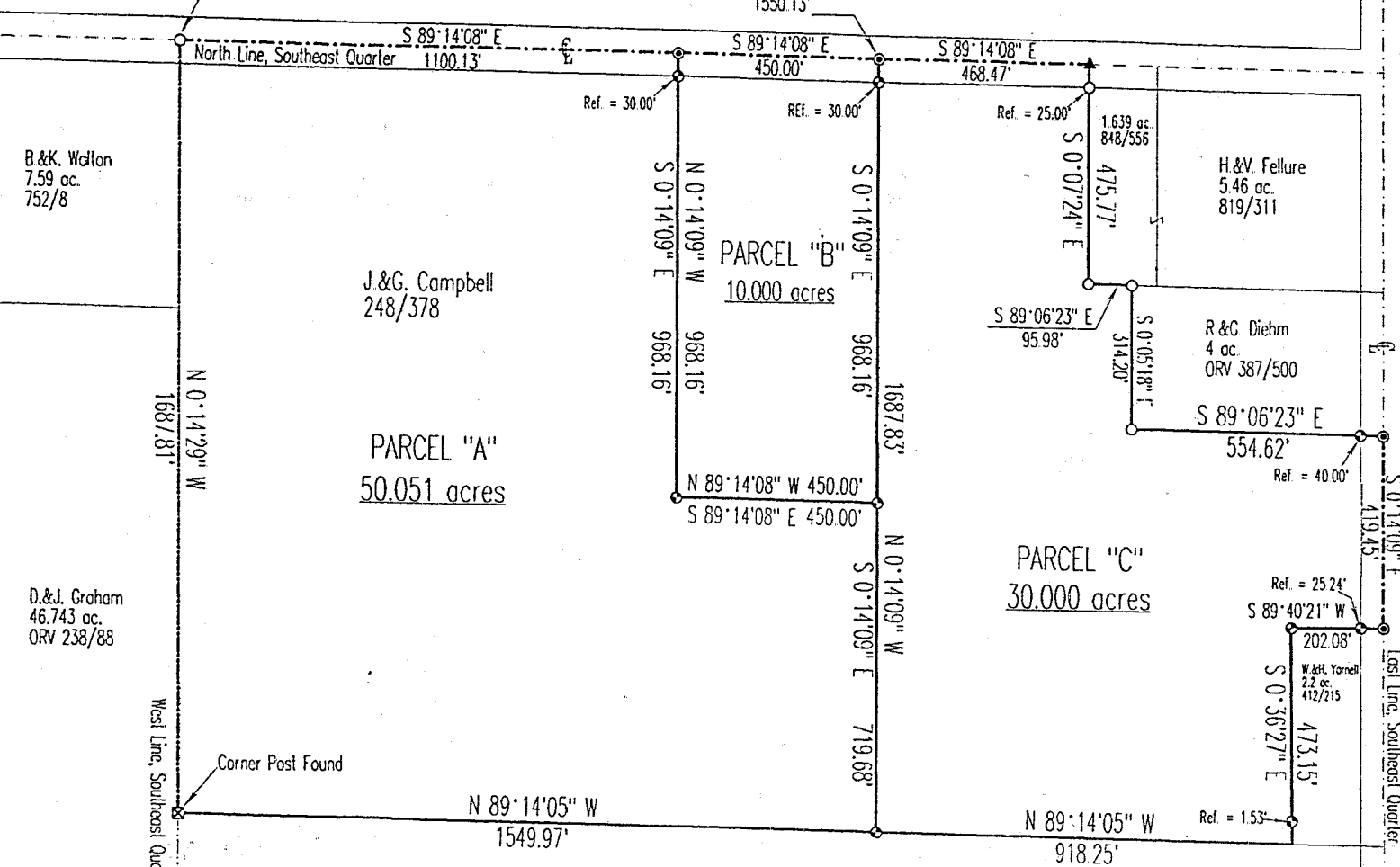


Scale: 1" = 300'  
Bearings are based on Survey A-384.

SHILOH-NEWVILLE ROAD (S.R. 603)

Northwest Corner  
Southeast Quarter  
Section 22

WELTY ROAD (T.H. 364)



B.&K. Walton  
7.59 ac.  
752/8

J.&G. Campbell  
248/378

H.&V. Fellure  
5.46 ac.  
819/311

R.&C. Diehm  
4 ac.  
ORV 387/500

D.&J. Graham  
46.743 ac.  
ORV 238/88

W.&C. Zirzow  
30.735 ac.  
ORV 372/516

Corner Post Found

### LEGEND

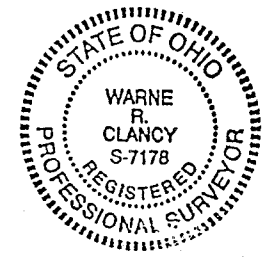
- Iron pin set with cap stamped "CLANCY 7178"
- Iron pin found
- ⊙ PK spike set
- ▲ Railroad Spike found

MEETS -  
MONROE TWP. 2200116  
12-19-97  
W.R. Clancy

DATE: 12/17/97  
JOB NO.: W121297

NEW SPLIT  
TAX MAP APPROVED  
INITIAL DATE  
J.C. 12-19-97

NEW SURVEY  
OF EXISTING PARCEL  
TAX MAP APPROVED  
INITIAL DATE  
J.C. 12-19-97



Warne R. Clancy  
Warne R. Clancy P.S. #7178

H-454

H-454

H-454



H-454

SURVEY DESCRIPTION

PART SOUTHEAST QUARTER, SECTION 22  
MONROE TOWNSHIP, T-22, R-17  
RICHLAND COUNTY, OHIO

Situated in the Township of Monroe, County of Richland, State of Ohio, and being a part of the Southeast Quarter of Section 22 of Township 22, Range 17, more particularly described as follows:

Beginning for the same at an iron pin found marking the northwest corner of said southeast quarter; Thence, South 89 degrees 14 minutes 08 seconds East with the north line of said quarter, the same being the centerline of Welty Road (T.H. 364), a distance of 1100.13 feet to a PK spike set thereon;

Thence, South 00 degrees 14 minutes 09 seconds East, passing an iron pin set for reference at 30.00 feet, a distance of 968.16 feet to an iron pin set;

Thence, South 89 degrees 14 minutes 08 seconds East, a distance of 450.00 feet to an iron pin set;

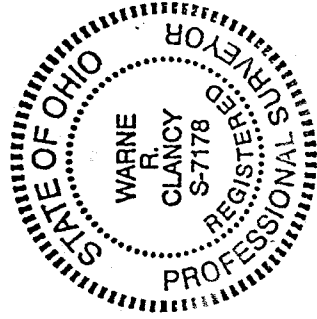
Thence, South 00 degrees 14 minutes 09 seconds East, a distance of 719.68 feet to an iron pin set on the north line of an existing 30.735 acre parcel owned by W.&C. Zirzow (ORV 372/516);

Thence, North 89 degrees 14 minutes 05 seconds West with the north line of said 30.735 acres, a distance of 1549.97 feet to a Corner Post Found on the west line of said southeast quarter marking the northwest corner thereof;

Thence, North 00 degrees 14 minutes 29 seconds West with said west line, a distance of 1687.81 feet to the Place of Beginning, containing 50.051 acres according to survey by Warne R. Clancy, Professional Surveyor #7178, on December 12, 1997.

Iron pins set are #5 rebars with caps stamped "CLANCY 7178".

Bearings are based on Survey A-384.



PARCEL "A" - 50.051 AC.

*Warne R. Clancy*  
Warne R. Clancy  
Professional Surveyor #7178

MEETS - MONROE TWP - 2011/16  
12-17-97  
W.R. Bradenbaugh

NEW SPLIT  
TAX MAP APPROVED  
DATE 12.19.97

H-454

H-454

SURVEY DESCRIPTION

PART SOUTHEAST QUARTER, SECTION 22  
MONROE TOWNSHIP, T-22, R-17  
RICHLAND COUNTY, OHIO

Situated in the Township of Monroe, County of Richland, State of Ohio, and being a part of the Southeast Quarter of Section 22 of Township 22, Range 17, more particularly described as follows:

Commencing for the same at an iron pin found marking the northwest corner of said southeast quarter; Thence, South 89 degrees 14 minutes 08 seconds East with the north line of said quarter, the same being the centerline of Welty Road (T.H. 364), a distance of 1100.13 feet to a PK spike set, the Place of Beginning;

Thence, continuing with said north quarter and centerlines South 89 degrees 14 minutes 08 seconds East, a distance of 450.00 feet to a PK spike set thereon;

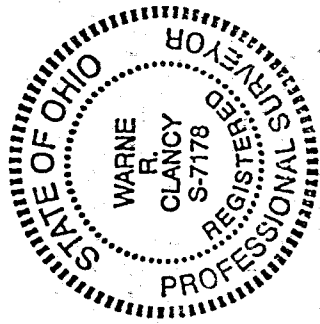
Thence, South 00 degrees 14 minutes 09 seconds East, passing an iron pin set for reference at 30.00 feet, a distance of 968.16 feet to an iron pin set;

Thence, North 89 degrees 14 minutes 08 seconds West, a distance of 450.00 feet to an iron pin set;

Thence, North 00 degrees 14 minutes 09 seconds West, passing an iron pin set for reference at 938.16 feet, a distance of 968.16 feet to the Place of Beginning, containing 10.000 acres according to survey by Warne R. Clancy, Professional Surveyor #7178, on December 12, 1997.

Iron pins set are #5 rebars with caps stamped "CLANCY 7178".

Bearings are based on Survey A-384.



*Warne R. Clancy*  
Warne R. Clancy  
Professional Surveyor #7178

PARCEL "B" - 10.000 AC.

*MEETS - MONROE TWP. ZONING*  
*12-19-97*  
*W.R. Clancy*

H-454

NEW SPLIT  
TAX MAP APPROVED  
DATE 2.19.97  
INITI

SURVEY DESCRIPTION

PART SOUTHEAST QUARTER, SECTION 22  
 MONROE TOWNSHIP, T-22, R-17  
 RICHLAND COUNTY, OHIO

Situated in the Township of Monroe, County of Richland, State of Ohio, and being a part of the Southeast Quarter of Section 22 of Township 22, Range 17, more particularly described as follows:

Commencing for the same at an iron pin found marking the northwest corner of said southeast quarter; Thence, South 89 degrees 14 minutes 08 seconds East with the north line of said quarter, the same being the centerline of Welty Road (T.H. 364), a distance of 1550.13 feet to a PK spike set, the Place of Beginning;

Thence, continuing with said north quarter and centerlines South 89 degrees 14 minutes 08 seconds East, a distance of 468.47 feet to a railroad spike found marking the northwest corner of an existing 1.639 acre parcel owned by H.&V. Fellure (848/556);

Thence, South 00 degrees 07 minutes 24 seconds East with the west line of said 1.639 acres, passing an iron pin found for reference at 25.00 feet, a distance of 475.77 feet to an iron pin found marking the southwest corner thereof;

Thence, South 89 degrees 06 minutes 23 seconds East with the south line of said 1.639 acres, a distance of 95.98 feet to an iron pin found marking the northwest corner of an existing 4 acre parcel owned by R.&G. Diehm (ORV 387/500);

Thence, South 00 degrees 05 minutes 18 seconds East with the west line of said 4 acres, a distance of 314.20 feet to an iron pin found marking the southwest corner thereof;

Thence, South 89 degrees 06 minutes 23 seconds East with the south line of said 4 acres, passing an iron pin set for reference at 514.62 feet, a distance of 554.62 feet to a PK spike set on the east line of said southeast quarter, the same being the centerline of the Shiloh-Newville Road (S.R. 603);

Thence, South 00 degrees 14 minutes 09 seconds East with said east and centerlines, a distance of 419.45 feet to a PK spike set marking the northeast corner of an existing 2.2 acre parcel owned by W.&H. Yarnell (412/215);

Thence, South 89 degrees 40 minutes 21 seconds West with the north line of said 2.2 acres, passing an iron pin set for reference at 25.24 feet, a distance of 202.08 feet to an iron pin set marking the northwest corner thereof;

Thence, South 00 degrees 36 minutes 27 seconds East with the west line of said 2.2 acres, passing an iron pin set for reference at 471.62 feet, a distance of 473.15 feet to a point on the north line of an existing 30.735 acre parcel owned by W.&C. Zirzow (ORV 372/516);

Thence, North 89 degrees 14 minutes 05 seconds West with the north line of said 30.735 acres, a distance of 918.25 feet to an iron pin set thereon;

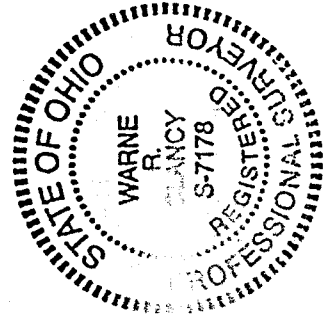
Thence, North 00 degrees 14 minutes 09 seconds West, passing an iron pin set for reference at 1657.83 feet, a distance of 1687.83 feet to the Place of Beginning, containing 30.000 acres according to survey by Warne R. Clancy, Professional Surveyor #7178, on December 12, 1997.

Iron pins set are #5 rebars with caps stamped "CLANCY 7178".

H-454

H-454

Bearings are based on Survey A-384.



PARCEL "C" - 30.000 AC.

*Warne R. Clancy*  
 Warne R. Clancy  
 Professional Surveyor #7178

*MEETS MONROE TRAP-ZONING*

*12-19-97*

*R. W. [Signature]*

NEW SURVEY  
 OF EXISTING PARCEL  
 TAX MAP APPROVED

*[Signature]*  
 PRINT

1997