

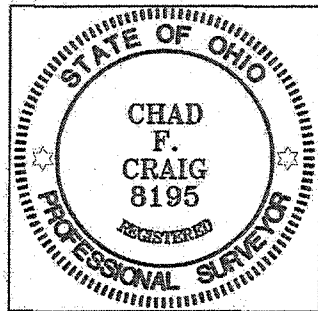
**CRYSTAL SPRINGS STREET 60' R/W**

**NORTH**



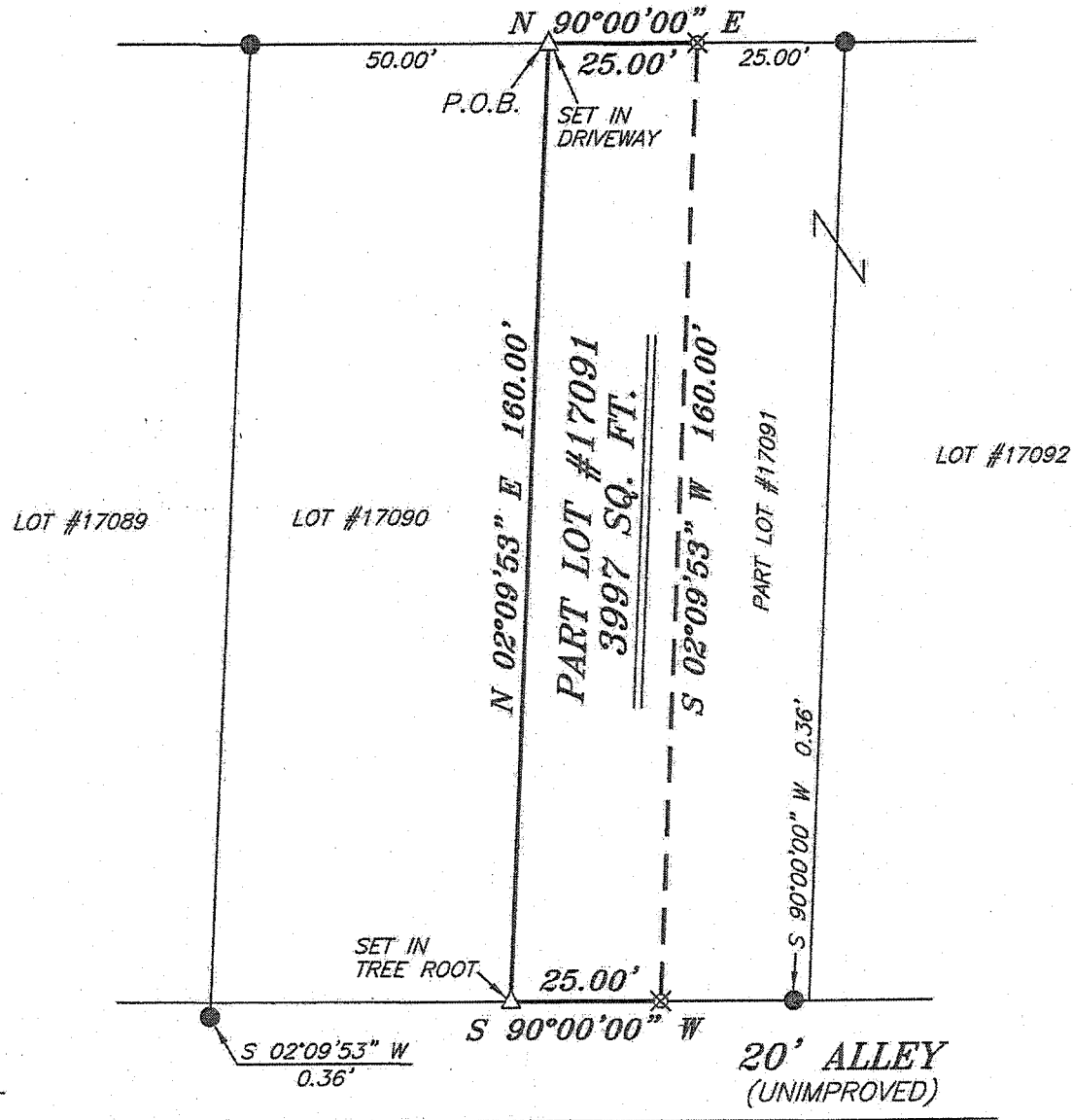
BEARINGS ARE BASED ON AN ASSUMED MERIDIAN AND ARE INTENDED TO BE USED FOR ANGULAR DETERMINATION ONLY

**NEW SPLIT  
RICHLAND COUNTY  
TAX MAP OFFICE**  
EAK 10-26-14  
INITIAL DATE  
GG-293



*Chad F. Craig*

SURVEY BY: CHAD F. CRAIG P.S. #8195  
for SEILER & CRAIG SURVEYING INC.  
270 PARK AVENUE WEST  
MANSFIELD, OHIO 44902  
(419) 525-3644  
EMAIL: SEILERANDCRAIG@SEILERANDCRAIG.COM



**LEGEND**

- IRON PIN FOUND
- ⊗ 2" MAG NAIL SPIKE SET
- ⊗ 3" SURVEY MARKER SET
- △ RAILROAD SPIKE SET
- ▲ RAILROAD SPIKE FOUND
- ⊗ 5/8" IRON PIN SET WITH CAP STAMPED "CRAIG 8195"

SURVEY PLAT FOR PROPERTY TRANSFER	
PART LOT #17091 CITY OF MANSFIELD RICHLAND COUNTY, OHIO	
DATE: OCTOBER 20, 2014	SCALE: 1"=30'
CRYSTAL_SPRINGS_307	

**SEILER & CRAIG SURVEYING, INC.**

Chad F. Craig, P.S.  
270 Park Avenue West  
Mansfield, Ohio 44902  
419-525-3644  
Email: [seilerandcraig@seilerandcraig.com](mailto:seilerandcraig@seilerandcraig.com)

**SURVEY DESCRIPTION**

PART LOT #17091  
CITY OF MANSFIELD  
RICHLAND COUNTY, OHIO

Situated in the City of Mansfield, County of Richland, State of Ohio and being known as part Lot #17091 of the consecutively numbered lots in said city, and being more particularly described as follows:

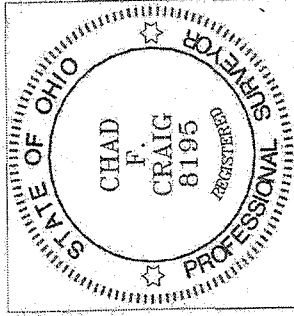
Beginning for the same at a railroad spike set on the northwest corner of said lot; Thence, North 90 degrees 00 minutes 00 seconds East with the north line of said lot, a distance of 25.00 feet to an iron pin set;

Thence, South 02 degrees 09 minutes 53 seconds West a distance of 160.00 feet to an iron pin set on the south line of said lot;

Thence, South 90 degrees 00 minutes 00 seconds West with said south line, a distance of 25.00 feet to a railroad spike set in a tree root on the southwest corner of said lot;

Thence, North 02 degrees 09 minutes 53 seconds East with the west line of said lot, a distance of 160.00 feet to the place of beginning, containing 3,997 square feet according to survey by Chad F. Craig P.S. 8195 on October 20, 2014 but subject to all legal highways and easements of record.

Bearings are based on an assumed meridian and are intended to be used for angular determination only.



NEW SPLIT  
RICHLAND COUNTY  
TAX MAP OFFICE  
EAC INITIAL DATE  
GG-293 10-26-14

Chad F. Craig P.S. #8195  
Seiler and Craig Surveying, Inc.