

BUSHNELL STREET 40' R/W

EAST LUTHER PLACE 20' R/W

VACATED OAK STREET 60' R/W

LOT #1151

LOT #1160

LOT #1159

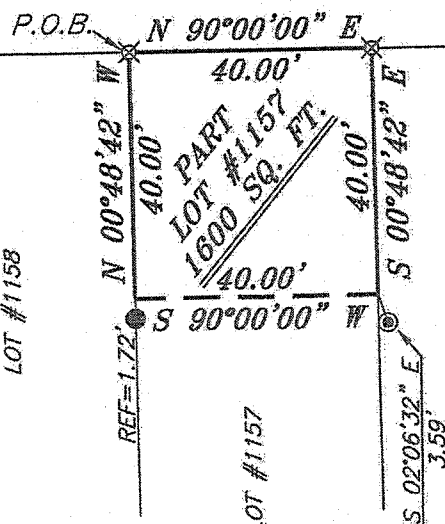
LOT #1158

PART LOT #1157

PART LOT #1156

PART LOT #1156

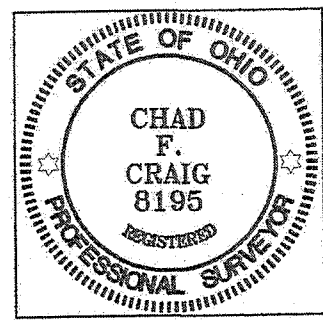
LOT #1155



BEARINGS ARE BASED ON SURVEY L-383 ON FILE AT THE RICHLAND COUNTY TAX MAP OFFICE AND ARE INTENDED TO BE USED FOR ANGULAR DETERMINATION ONLY

**LEGEND**

- IRON PIN FOUND
- ⊙ IRON PIPE FOUND
- ⊗ 3" SURVEY MARKER SET
- △ RAILROAD SPIKE SET
- ▲ RAILROAD SPIKE FOUND
- ⊗ 5/8" IRON PIN SET WITH CAP STAMPED "CRAIG 8195"



*Chad F. Craig*

SURVEY BY: CHAD F. CRAIG P.S. #8195  
 for SEILER & CRAIG SURVEYING INC.  
 270 PARK AVENUE WEST  
 MANSFIELD, OHIO 44902  
 (419) 525-3644  
 EMAIL: SEILERANDCRAIG@SEILERANDCRAIG.COM

NEW SURVEY  
 OF EXISTING PARCEL  
 RICHLAND COUNTY  
 TAX MAP OFFICE  
 EAK 10-10-14  
 INITIAL DATE  
 GG-270

SURVEY PLAT FOR	
PROPERTY TRANSFER	
PART LOT #1157 CITY OF MANSFIELD RICHLAND COUNTY, OHIO	
DATE: SEPT. 30, 2014	SCALE: 1"=30'
LUTHER_PL_314	

**SEILER & CRAIG SURVEYING, INC.**

Chad F. Craig, P.S.  
270 Park Avenue West  
Mansfield, Ohio 44902  
419-525-3644

Email: [seilerandcraig@seilerandcraig.com](mailto:seilerandcraig@seilerandcraig.com)

**SURVEY DESCRIPTION**

PART LOT #1157  
CITY OF MANSFIELD  
RICHLAND COUNTY, OHIO

Situated in the City of Mansfield, County of Richland, State of Ohio and being known as part Lot #1157 of the consecutively numbered lots in said city, and being more particularly described as follows:

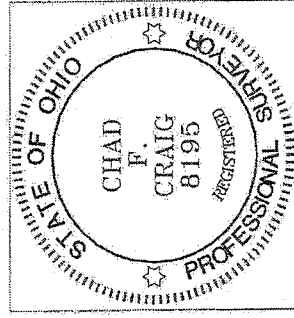
Beginning for the same at an iron pin set marking the northwest corner of said lot; Thence, North 90 degrees 00 minutes 00 seconds East with the north line, a distance of 40.00 feet to an iron pin set on the northeast corner thereof;

Thence, South 00 degrees 48 minutes 42 seconds East with the east line of said lot, a distance of 40.00 feet to a point referenced by an iron pin found on a bearing of South 02 degrees 06 minutes 32 seconds East and at a distance of 3.59 feet;

Thence, South 90 degrees 00 minutes 00 seconds West a distance of 40.00 feet to a point on the west line of said lot and referenced by an iron pin found on a bearing of South 00 degrees 48 minutes 42 seconds East and at a distance of 1.72 feet;

Thence, North 00 degrees 48 minutes 42 seconds West with said west line, a distance of 40.00 feet to the place of beginning, containing 1,600 square feet according to survey by Chad F. Craig P.S. 8195 on September 30, 2014 but subject to all legal highways and easements of record.

Bearings are based on Survey L-383 on file at the Richland County Tax Map Office and are intended to be used for angular determination only.



NEW SURVEY  
OF EXISTING PARCEL  
RICHLAND COUNTY  
TAX MAP OFFICE

FAK 10-10-14  
INITIAL DATE  
GG-270

Chad F. Craig P.S. #8195  
Seiler and Craig Surveying, Inc.