

15' ALLEY

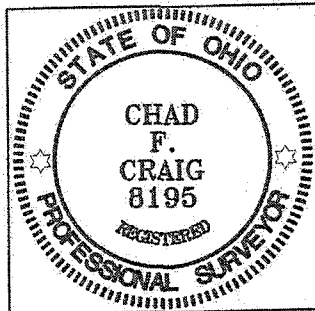
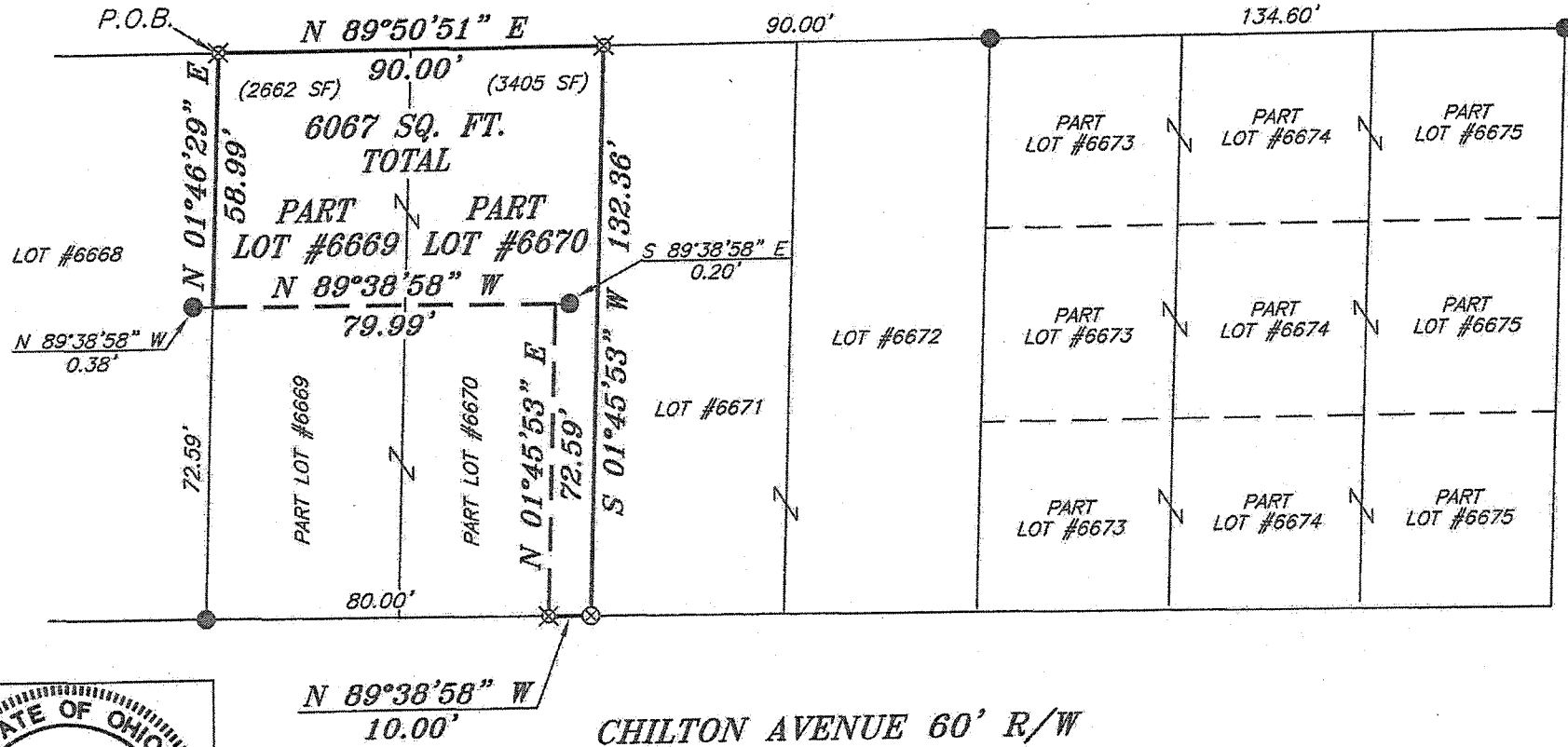
NORTH



BEARINGS ARE BASED ON SURVEY R-66 ON FILE AT THE RICHLAND COUNTY TAX MAP OFFICE AND ARE INTENDED TO BE USED FOR ANGULAR DETERMINATION ONLY

**LEGEND**

- IRON PIN FOUND
- ♂ 2" MAG NAIL SPIKE SET
- ⊗ 3" SURVEY MARKER SET
- △ RAILROAD SPIKE SET
- ▲ RAILROAD SPIKE FOUND
- ⊗ 5/8" IRON PIN SET WITH CAP STAMPED "CRAIG 8195"



*Chad F. Craig*  
 SURVEY BY: CHAD F. CRAIG P.S. #8195  
 for SEILER & CRAIG SURVEYING INC.  
 270 PARK AVENUE WEST  
 MANSFIELD, OHIO 44902  
 (419) 525-3644  
 EMAIL: SEILERANDCRAIG@SEILERANDCRAIG.COM

NEW SURVEY  
 OF EXISTING PARCEL  
 RICHLAND COUNTY  
 TAX MAP OFFICE

EAK 9-29-14  
 INITIAL DATE  
 GG-262

SURVEY PLAT FOR	
PROPERTY TRANSFER	
PART LOT #6669 & PART LOT #6670	
CITY OF MANSFIELD	
RICHLAND COUNTY, OHIO	
DATE: SEPT. 26, 2014	SCALE: 1"=40'
CHILTON_AVE_112	

**SEILER & CRAIG SURVEYING, INC.**

Chad F. Craig, P.S.  
270 Park Avenue West  
Mansfield, Ohio 44902  
419-525-3644

Email: [seilerandcraig@seilerandcraig.com](mailto:seilerandcraig@seilerandcraig.com)

**SURVEY DESCRIPTION**

**PART LOT #6669 AND PART LOT #6670  
CITY OF MANSFIELD  
RICHLAND COUNTY, OHIO**

Situated in the City of Mansfield, County of Richland, State of Ohio and being known as part Lot #6669 and part Lot #6670 of the consecutively numbered lots in said city, and being more particularly described as follows:

Beginning for the same at an iron pin set on the northwest corner of Lot #6669 in said city; Thence, North 89 degrees 50 minutes 51 seconds East with the north line of said lot and the easterly prolongation thereof, a distance of 90.00 feet to an iron pin set on the northeast corner of Lot #6670;

Thence, South 01 degree 45 minutes 53 seconds West with the east line of Lot #6670, a distance of 132.36 feet to a 3 inch survey marker set on the southeast corner thereof;

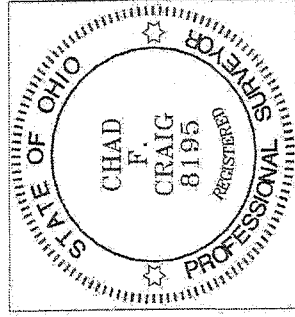
Thence, North 89 degrees 38 minutes 58 seconds West with the south line of Lot #6670, a distance of 10.00 feet to an iron pin set;

Thence, North 01 degree 45 minutes 53 seconds East 72.59 feet to a point referenced by an iron pin found on a bearing of South 89 degrees 38 minutes 58 seconds East and at a distance of 0.20 feet;

Thence, North 89 degrees 38 minutes 58 seconds West a distance of 79.99 feet to a point on the west line of Lot #6669 and referenced by an iron pin found on a bearing of North 89 degrees 38 minutes 58 seconds West and at a distance of 0.38 feet;

Thence, North 01 degree 46 minutes 29 seconds East with said west line, a distance of 58.99 feet to the place of beginning, containing a total of 6,067 square feet of which 2,662 square feet are located within part Lot #6669 and 3,405 square feet are located within part Lot #6670 according to survey by Chad F. Craig P.S. 8195 on September 26, 2014 but subject to all legal highways and easements of record.

Bearings are based on Survey R-66 on file at the Richland County Tax Map Office and are intended to be used for angular determination only.



**NEW SURVEY  
OF EXISTING PARCEL  
RICHLAND COUNTY  
TAX MAP OFFICE**

**FAX** 9-29-14  
**INITIAL** GG-262  
**DATE**

A handwritten signature in black ink that reads "Chad F. Craig".

Chad F. Craig P.S. #8195  
Seiler and Craig Surveying, Inc.