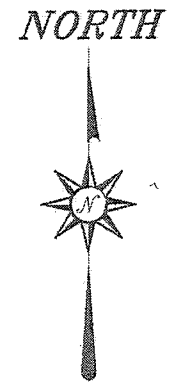


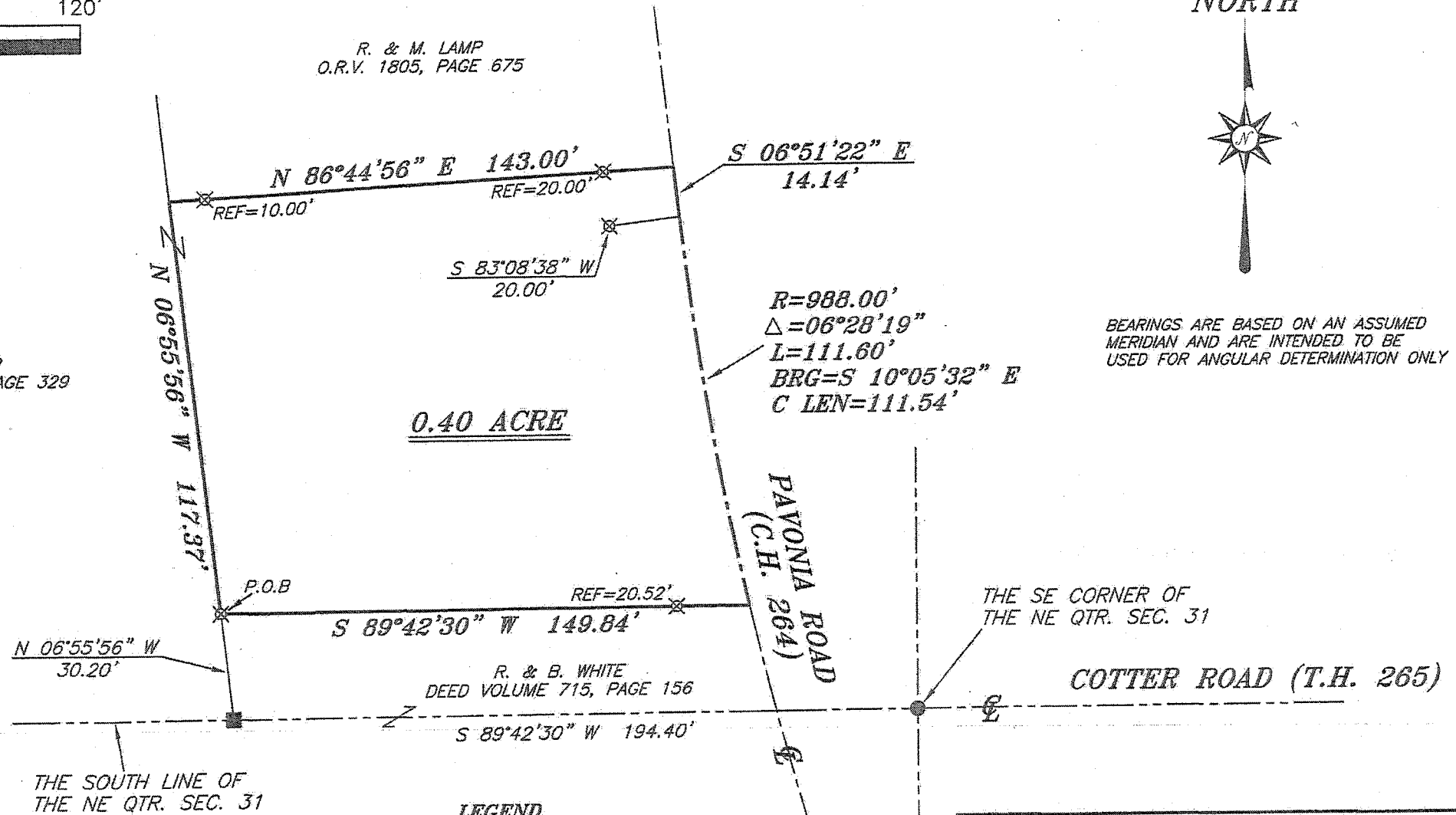
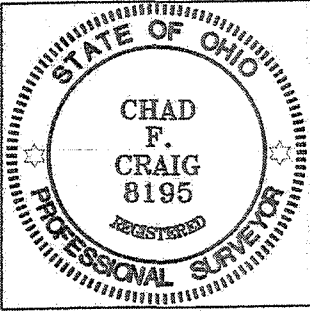
R. & M. LAMP
O.R.V. 1805, PAGE 675



BEARINGS ARE BASED ON AN ASSUMED
MERIDIAN AND ARE INTENDED TO BE
USED FOR ANGULAR DETERMINATION ONLY

R. LAMP
O.R.V. 2320, PAGE 329

**NEW SURVEY
OF EXISTING PARCEL
RICHLAND COUNTY
TAX MAP OFFICE**
EAK 9.9.14
INITIAL DATE
GG-230



0.40 ACRE

R. & B. WHITE
DEED VOLUME 715, PAGE 156

THE SE CORNER OF
THE NE QTR. SEC. 31

THE SOUTH LINE OF
THE NE QTR. SEC. 31

LEGEND

- IRON PIN FOUND
- RAILROAD TIE FOUND
- ⊗ 3" SURVEY MARKER SET
- △ RAILROAD SPIKE SET
- ▲ RAILROAD SPIKE FOUND
- ⊗ 5/8" IRON PIN SET WITH CAP
STAMPED "CRAIG 8195"

SURVEY PLAT FOR	
LAMP	
PART NE QTR. SEC. 31, T-24, R-17 WELLER TOWNSHIP RICHLAND COUNTY, OHIO	
DATE: AUGUST 27, 2014	SCALE: 1"=40'
PAVONIA_RD_4279	

Chad F. Craig
SURVEY BY: CHAD F. CRAIG P.S. #8195
for SEILER & CRAIG SURVEYING INC.
270 PARK AVENUE WEST
MANSFIELD, OHIO 44902
(419) 525-3644
EMAIL: SEILERANDCRAIG@SEILERANDCRAIG.COM

SEILER & CRAIG SURVEYING, INC.

Chad F. Craig, PS
270 Park Avenue West
Mansfield, Ohio 44902
419-525-3644

Email: seilerandcraig@seilerandcraig.com

SURVEY DESCRIPTION

**PART OF THE NE QUARTER OF SECTION 31
WELLER TOWNSHIP
RICHLAND COUNTY, OHIO**

Situated in the Township of Weller, County of Richland, State of Ohio and being a part of the Northeast Quarter of Section 31, of Township 24 North, Range 17 West, and being more particularly described as follows:

Commencing at an iron pin found and accepted as marking the southeast corner of said quarter, Thence, South 89 degrees 42 minutes 30 seconds West with the south line of said quarter a distance of 194.40 feet to a railroad tie found marking the southeast corner of a parcel currently owned by R. Lamp (O.R.V. 2320, Page 329), referenced by an iron pin set on a bearing of North 06 degrees 55 minutes 56 second West and at a distance of 30.20 feet, Thence, North 06 degrees 55 minutes 56 second West with the east line of said Lamp parcel a distance of 30.20 feet to an iron pin set, the place of beginning of the herein described parcel;

Thence, continuing North 06 degrees 55 minutes 56 seconds West with said east line a distance of 117.37 feet to a point referenced by an iron pin set on a bearing of North 86 degrees 44 minutes 56 seconds East and at a distance of 10.00 feet, said point marking the southwest corner of a parcel currently owned by R. & M. Lamp (O.R.V. 1805, Page 675);

Thence, North 86 degrees 44 minutes 56 seconds East with the south line of said Lamp parcel and passing through said iron pin set and passing through an iron pin set for reference at a distance of 123.00 feet, a total distance of 143.00 feet to a point in the centerline of Pavonia Road (C.H. 264);

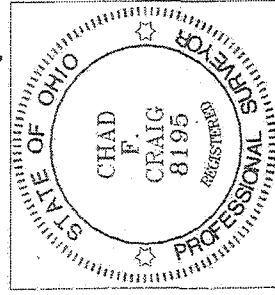
Thence, South 06 degrees 51 minutes 22 seconds East with said centerline a distance of 14.14 feet to a point referenced by an iron pin set on a bearing of South 83 degrees 08 minutes 38 seconds West and at a distance of 20.00 feet;

Thence, continuing with said centerline with a curve to the left having a central angle of 06 degrees 28 minutes 19 seconds, a radius of 988.00 feet, an arc length of 111.60 feet, a chord bearing of South 10 degrees 05 minutes 32 seconds East, and a chord distance of 111.54 feet to a point referenced by an iron pin set on a bearing of South 89 degrees 42 minutes 30 seconds West and at a distance of 20.52 feet, said point marking the northeast corner of a parcel currently owned by R. & B. White (D.V. 715, Page 156);

Thence, South 89 degrees 42 minutes 30 seconds West with the north line of said White parcel and passing through said iron pin set, a total distance of 149.84 feet to the place of beginning, containing 0.40 acre according to survey by Chad F. Craig P.S. #8195 for Seiler & Craig Surveying, Inc. on August 27, 2014, but subject to all easements and right of ways of record.

Iron pins set are 5/8" rods with caps stamped "CRAIG 8195".

Bearings are based on an assumed meridian and are intended to be used for angular determination only.



NEW SURVEY
OF EXISTING PARCEL
RICHLAND COUNTY
TAX MAP OFFICE

INITIAL DATE
EAC 9-9-14
GG-230

A handwritten signature of Chad F. Craig in black ink.

Chad F. Craig P.S.#8195
for Seiler & Craig Surveying, Inc.