

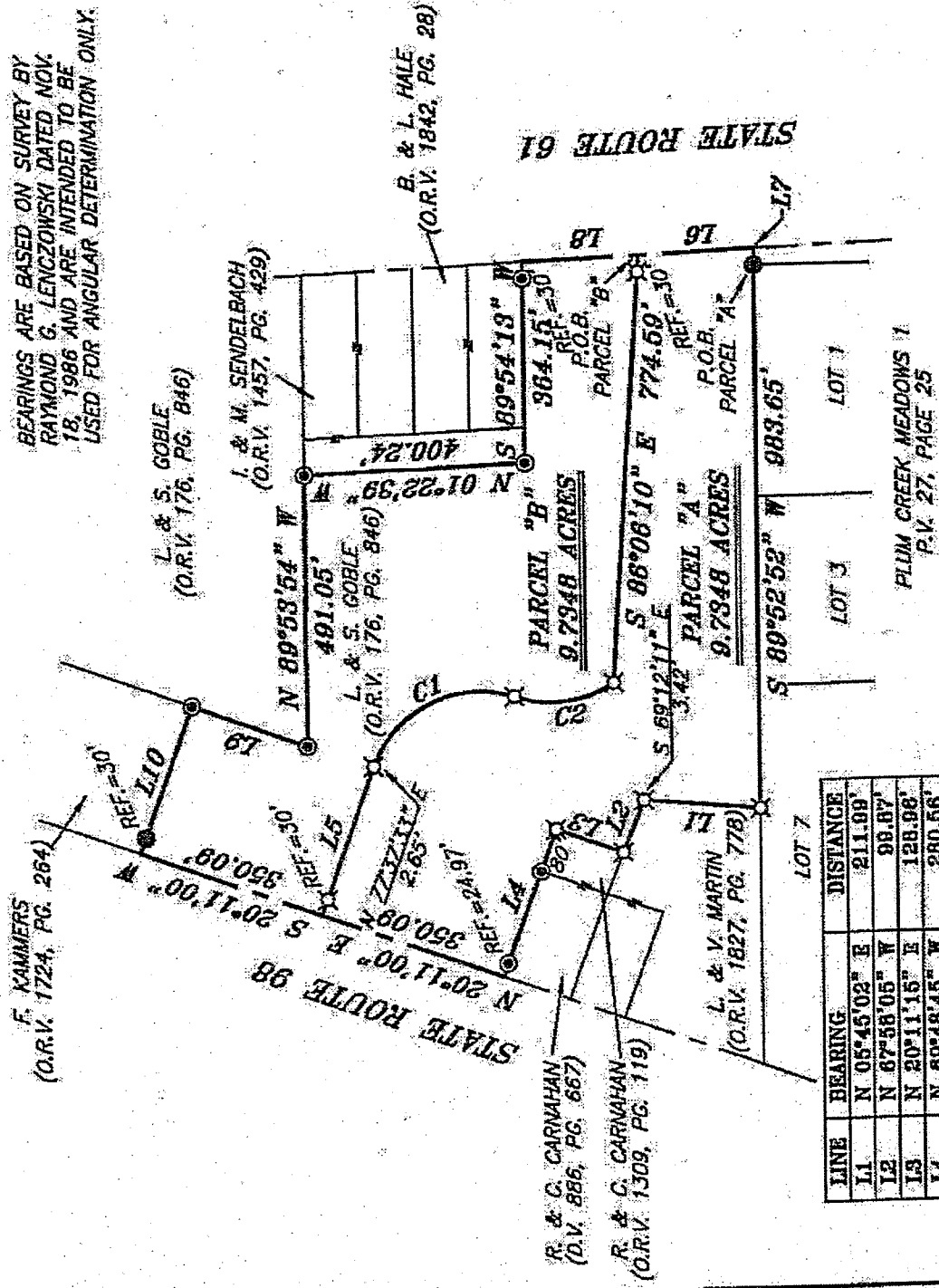


AT 081025



CURVE	DELTA ANGLE	RADIUS	ARC LENGTH	CHORD BEARING	CHORD LENGTH
C1	90°00'00"	200.00'	314.16'	S 24°40'03" E	282.85'
C2	53°22'38"	200.00'	186.32'	S 06°30'10" E	179.66'

BEARINGS ARE BASED ON SURVEY BY RAYMOND G. LENCZOWSKI DATED NOV. 18, 1986 AND ARE INTENDED TO BE USED FOR ANGULAR DETERMINATION ONLY.



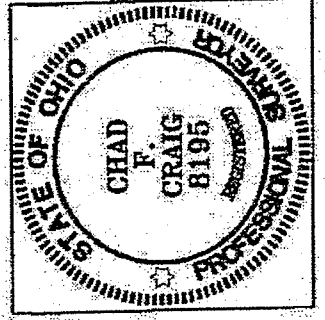
LINE	BEARING	DISTANCE
L1	N 05°45'02" E	211.99'
L2	N 67°58'05" W	99.87'
L3	N 20°11'15" E	128.98'
L4	N 69°48'45" W	280.56'
L5	S 69°40'00" E	282.51'
L6	S 01°38'10" E	207.47'
L7	S 69°52'52" W	80.01'
L8	N 01°38'10" W	207.47'
L9	N 20°19'35" E	222.51'
L10	N 69°41'55" W	280.25'

NEW SPLIT  
RICHLAND COUNTY  
TAX MAP OFFICE  
EAK 5-8-14

INITIAL DATE  
GG-80

NEW SURVEY  
OF EXISTING PARCEL  
RICHLAND COUNTY  
TAX MAP OFFICE  
EAK 5-8-14

INITIAL DATE  
Bill S. [Signature] 5/7/14



SURVEY BY: *Chad F. Craig*  
CHAD F. CRAIG 8196  
for SELLER & CRAIG SURVEYING, INC.  
52-1/2 NORTH MAIN STREET  
LANSFELD, OHIO 44802  
(419) 525-3644  
Email: sellerandcraig@sieraandcraig.com

**LEGEND**

- IRON PIN FOUND
- ⊙ 3" SURVEY MARKER SET
- ⊕ 2" MAG NAIL SPIKE SET
- ▲ RAILROAD SPIKE FOUND
- ⊗ 5/8" IRON PIN SET WITH CAP STAMPED "CRAIG 8195."

SURVEY PLAT FOR  
PROPERTY TRANSFER

PART SE QTR. SECTION 6, T-23, R-19  
VILLAGE OF PLYMOUTH, PLYMOUTH  
TOWNSHIP, RICHLAND COUNTY, OHIO

Date: APRIL 16, 2014 Scale: 1" = 300'  
ST-RT-61-60BLE

**SEILER & CRAIG SURVEYING, INC.**

*Chad F. Craig, P.S.  
52 ½ North Main Street  
Mansfield, Ohio 44902  
Phone: 419-525-3644  
Email: seilerandcraig@seilerandcraig.com*

**SURVEY DESCRIPTION  
PARCEL "A"**

**PART OF THE SOUTHEAST QUARTER OF SECTION 6  
VILLAGE OF PLYMOUTH, PLYMOUTH TOWNSHIP  
RICHLAND COUNTY, OHIO**

Situated in the Township of Plymouth, Village of Plymouth, County of Richland, State of Ohio and being a part of the Southeast Quarter of Section 6, of Township 23 North, Range 19 West, and being more particularly described as follows:

Beginning for the same at an iron pin found and accepted as marking the northeast corner of Lot 1 in Plum Creek Meadows 1 (P.V. 27, Page 25); Thence, South 89 degrees 52 minutes 52 seconds West with the north line of Lot 1 and the westerly prolongation thereof, a distance of 983.65 feet to an iron pin set on the north line of Lot 7 in Plum Creek Meadows, the same being the southeast corner of a parcel currently owned by L. and V. Martin (O.R.V. 1827, Page 778);

Thence, North 05 degrees 45 minutes 02 seconds East with the east line of said Martin parcel, a distance of 211.99 feet to a point on an interior corner of said parcel and referenced by an iron pin set on a bearing of South 69 degrees 12 minutes 11 seconds East and at a distance of 3.42 feet;

Thence, North 67 degrees 58 minutes 05 seconds West with a line common to said Martin parcel, a distance of 99.87 feet to an iron pin set on the southeast corner of a parcel currently owned by R. and C. Carnahan (O.R.V. 1309, Page 119);

Thence, North 20 degrees 11 minutes 15 seconds East with the east line of said Carnahan parcel, a distance of 128.96 feet to an iron pin set on the northeast corner thereof;

Thence, North 69 degrees 48 minutes 45 seconds West with the north line of said Carnahan parcel and the westerly prolongation thereof, passing through an iron pipe found at 80.00 feet and an iron pipe found at 255.59 feet, a total distance of 280.56 feet to a point in the centerline of State Route 98, said point being the northwest corner of a parcel currently owned by R. and C. Carnahan (D.V. 886, Page 677);

Thence, North 20 degrees 11 minutes 00 seconds East with said centerline, a distance of 350.09 feet to a point referenced by an iron pin set on a bearing of South 69 degrees 49 minutes 00 seconds East and at a distance of 30.00 feet;

Thence, South 69 degrees 49 minutes 00 seconds East passing through said iron pin set, a total distance of 282.51 feet to a point referenced by an iron pin set on a bearing of North 77 degrees 37 minutes 33 seconds East and at a distance of 2.65 feet;

Thence, with a curve to the right, having a central angle of 90 degrees 00 minutes 00 minutes, a radius of 200.00 feet, an arc length of 314.16 feet, a chord bearing of South 24 degrees 49 minutes 03 seconds East and a chord length of 282.85 feet to an iron pin set;

Thence, with a curve to the left, having a central angle of 53 minutes 22 seconds 38 minutes, a radius of 200.00 feet, an arc length of 186.32 feet, on a chord bearing of South 06 degrees 30 minutes 19 seconds East and a chord length of 179.66 feet to an iron pin set;

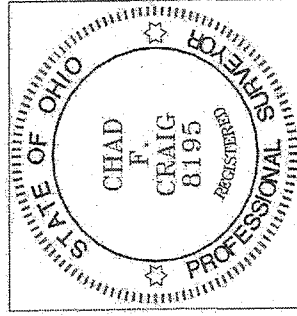
Thence, South 86 degrees 06 minutes 10 seconds East passing through an iron pin set for reference at 744.59 feet, a total distance of 774.59 feet to a point in the centerline of State Route 61;

Thence, South 01 degree 39 minutes 10 seconds East with said centerline, a distance of 207.47 feet to a point;

Thence, South 89 degrees 52 minutes 52 seconds West a distance of 30.01 feet to the place of beginning, containing 9.7348 acres according to survey by Chad F. Craig P.S. #8195 for Seiler & Craig Surveying, Inc. on April 16, 2014, but subject to all easements and highways of record.

Iron pins set are 5/8" rods with caps stamped "CRAIG 8195".

Bearings are based on survey by Raymond G. Lenczowski dated November 18, 1986 and are intended to be used for angular determination only.



NEW SPLIT  
RICHLAND COUNTY  
TAX MAP OFFICE

EAK 5-8-14  
INITIAL DATE  
GG-80

Chad F. Craig P.S.#8195  
for Seiler & Craig Surveying, Inc.

**SEILER & CRAIG SURVEYING, INC.**

*Chad F. Craig, PS*  
52 ½ North Main Street  
Mansfield, Ohio 44902  
Phone: 419-525-3644

*Email: seilerandcraig@seilerandcraig.com*

**SURVEY DESCRIPTION**  
**PARCEL "B"**

**PART OF THE SOUTHEAST QUARTER OF SECTION 6**  
**VILLAGE OF PLYMOUTH, PLYMOUTH TOWNSHIP**  
**RICHLAND COUNTY, OHIO**

Situated in the Township of Plymouth, Village of Plymouth, County of Richland, State of Ohio and being a part of the Southeast Quarter of Section 6, of Township 23 North, Range 19 West, and being more particularly described as follows:

Commencing at an iron pin found and accepted as marking the northeast corner of Lot 1 in Plum Creek Meadows 1 (P.V. 27, Page 25); Thence, North 89 degrees 52 minutes 52 seconds East a distance of 30.01 feet to a point in the centerline of State Route 61; Thence, North 01 degree 39 minutes 10 seconds West with said centerline, a distance of 207.47 feet to a point, said point being the place of beginning of the parcel herein described and referenced by an iron pin set on a bearing of North 86 degrees 06 minutes 10 seconds West and at a distance of 30.00 feet;

Thence, continuing North 01 degree 39 minutes 10 seconds West with said centerline, a distance of 207.47 feet to a point, said point being the southeast corner of a parcel currently owned by B. and L. Hale (O.R.V. 1842, Page 28) and referenced by an iron pipe found on a bearing of South 89 degrees 54 minutes 13 seconds West and at a distance of 30.00 feet;

Thence, South 89 degrees 54 minutes 13 seconds West, passing through said iron pipe, a total distance of 364.15 feet to an iron pipe found and accepted as marking the southwest corner of a parcel currently owned by I. and M. Sendelbach (O.R.V. 1457, Page 429);

Thence, North 01 degree 22 minutes 39 seconds West with the west line of said Sendelbach parcel, a distance of 400.24 feet to an iron pin found on the northwest corner thereof, the same being a point on the south line of a parcel currently owned by L. and S. Goble (O.R.V. 176, Page 846);

Thence, North 89 degrees 53 minutes 54 seconds West with said south line, a distance of 491.05 feet to an iron pipe found on the southwest corner thereof;

Thence, North 20 degrees 19 minutes 35 seconds East with the west line of said Goble parcel, a distance of 222.81 feet to an iron pipe found and accepted as marking the southeast corner of a parcel currently owned by F. Kammers (O.R.V. 1724, Page 264);

Thence, North 69 degrees 41 minutes 55 seconds West, passing through an iron pin found for reference at 250.25 feet, a total distance of 280.25 feet to a point in the centerline of State Route 98;

Thence, South 20 degrees 11 minutes 00 seconds West with said centerline, a distance of 350.09 feet to a point, said point referenced by an iron pin set on a bearing of South 69 degrees 49 minutes 00 seconds East and at a distance of 30.00 feet;

Thence, South 69 degrees 49 minutes 00 seconds East passing through said iron pin set, a total distance of 282.51 feet to a point referenced by an iron pin set on a bearing of North 77 degrees 37 minutes 33 seconds East and at a distance of 2.65 feet;

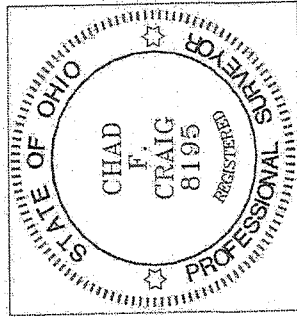
Thence, with a curve to the right, having a central angle of 90 degrees 00 minutes 00 minutes, a radius of 200.00 feet, an arc length of 314.16 feet, a chord bearing of South 24 degrees 49 minutes 03 seconds East and a chord length of 282.85 feet to a point referenced by an iron pin set on a bearing of North 77 degrees 37 minutes 33 seconds East and at a distance of 2.65 feet;

Thence, with a curve to the left, having a central angle of 53 minutes 22 seconds 38 minutes, a radius of 200.00 feet, an arc length of 186.32 feet, on a chord bearing of South 06 degrees 30 minutes 19 seconds East and a chord length of 179.66 feet to an iron pin set;

Thence, South 86 degrees 06 minutes 10 seconds East passing through an iron pin set for reference at 744.59 feet, a total distance of 774.59 feet the place of beginning, containing 9.7348 acres according to survey by Chad F. Craig P.S. #8195 for Seiler & Craig Surveying, Inc. on April 16, 2014, but subject to all easements and highways of record.

Iron pins set are 5/8" rods with caps stamped "CRAIG 8195".

Bearings are based on survey by Raymond G. Lenczowski dated November 18, 1986 and are intended to be used for angular determination only.



NEW SURVEY  
OF EXISTING PARCEL  
RICHLAND COUNTY  
TAX MAP OFFICE

FAK INITIAL  
5-8-14 DATE  
GG-80

Chad F. Craig P.S.#8195  
for Seiler & Craig Surveying, Inc.