



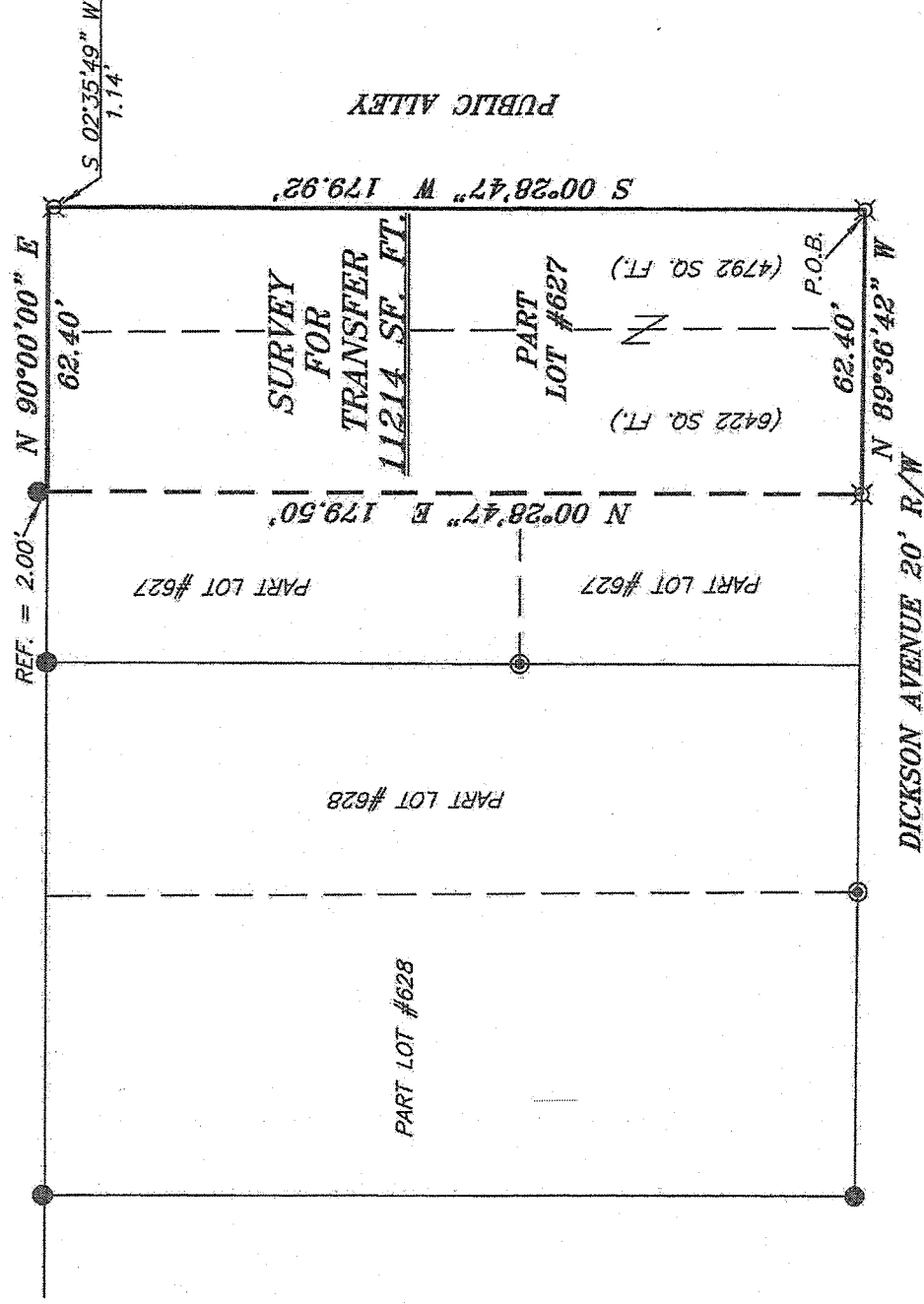
SCALE: 1" = 40'

BEARINGS ARE BASED ON SURVEY J-336  
ON FILE AT THE RICHLAND COUNTY TAX  
MAP OFFICE AND ARE INTENDED TO BE  
USED FOR ANGULAR DETERMINATION ONLY.

NORTH

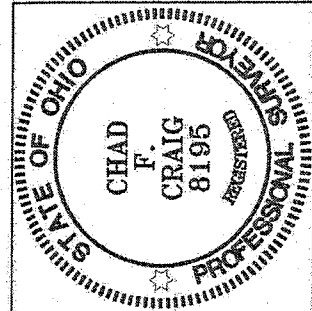


WEST FOURTH STREET 60' R/W



NEW SURVEY  
OF EXISTING PARCEL  
RICHLAND COUNTY  
TAX MAP OFFICE

FAX 4-2114  
INITIAL DATE  
GG-603



LEGEND

- IRON PIN FOUND
- ⊙ 3" SURVEY MARKER SET
- ⊘ 2" MAG NAIL SPIKE SET
- ▲ RAILROAD SPIKE FOUND
- ⊗ 5/8" IRON PIN SET WITH CAP STAMPED "CRAIG 8195."

*Chad F. Craig*  
 SURVEY BY: CHAD F. CRAIG PS 8195  
 for SEILER & CRAIG SURVEYING INC.  
 52-1/2 NORTH MAIN STREET  
 MANSFIELD, OHIO 44902  
 (419) 525-3644  
 Email: seilerandcraig@seilerandcraig.com

SURVEY PLAT FOR
PROPERTY TRANSFER
PART LOT #627 CITY OF MANSFIELD RICHLAND COUNTY, OHIO
Date: APRIL 15, 2014      Scale: 1" = 40'
FOURTH_HARMONY

**SEILER & CRAIG SURVEYING, INC.**

Chad F. Craig, P.S.  
52 1/2 North Main Street  
Mansfield, Ohio 44902  
Phone: 419-525-3644  
Email: [seilerandcraig@seilerandcraig.com](mailto:seilerandcraig@seilerandcraig.com)

**SURVEY DESCRIPTION**

PART LOT #627  
CITY OF MANSFIELD  
RICHLAND COUNTY, OHIO

Situated in the City of Mansfield, County of Richland, State of Ohio and being known as part of Lot #627 of the consecutively numbered lots in said city, and being more particularly described as follows:

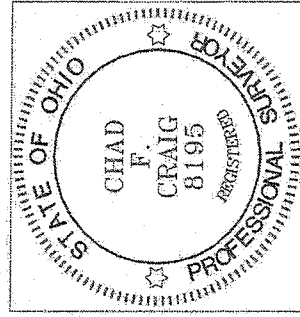
Beginning for the same at an iron pin set marking the southeast corner of said lot; Thence, North 89 degrees 36 minutes 42 seconds West with the south line of said lot, a distance of 62.40 feet to an iron pin set;

Thence, North 00 degrees 28 minutes 47 seconds East a distance of 179.50 feet to a point on the north line of said lot and referenced by an iron pin found on a bearing of North 00 degrees 28 minutes 47 seconds East and at a distance of 2.00 feet;

Thence, North 90 degrees 00 minutes 00 seconds East with said north line, a distance of 62.40 feet to the northeast corner thereof, said corner referenced by an iron pin set on a bearing of South 02 degrees 35 minutes 49 seconds West and at a distance of 1.14 feet;

Thence, South 00 degrees 28 minutes 47 seconds West with the east line of said lot, a distance of 179.92 feet to the place of beginning containing 11,214 square feet according to survey by Chad F. Craig P.S. #8195 for Seiler and Craig Surveying, Inc. on April 15, 2014 but subject to all easements and highways of record.

Bearings are based on survey J-336 on file at the Richland County Tax Map office and are intended to be used for angular determination only.



NEW SURVEY  
OF EXISTING PARCEL  
RICHLAND COUNTY  
TAX MAP OFFICE

INITIAL EAC DATE 4-21-14  
GAG-63

A handwritten signature in cursive script that reads "Chad F. Craig".

Chad F. Craig P.S. #8195  
Seiler and Craig Surveying, Inc.