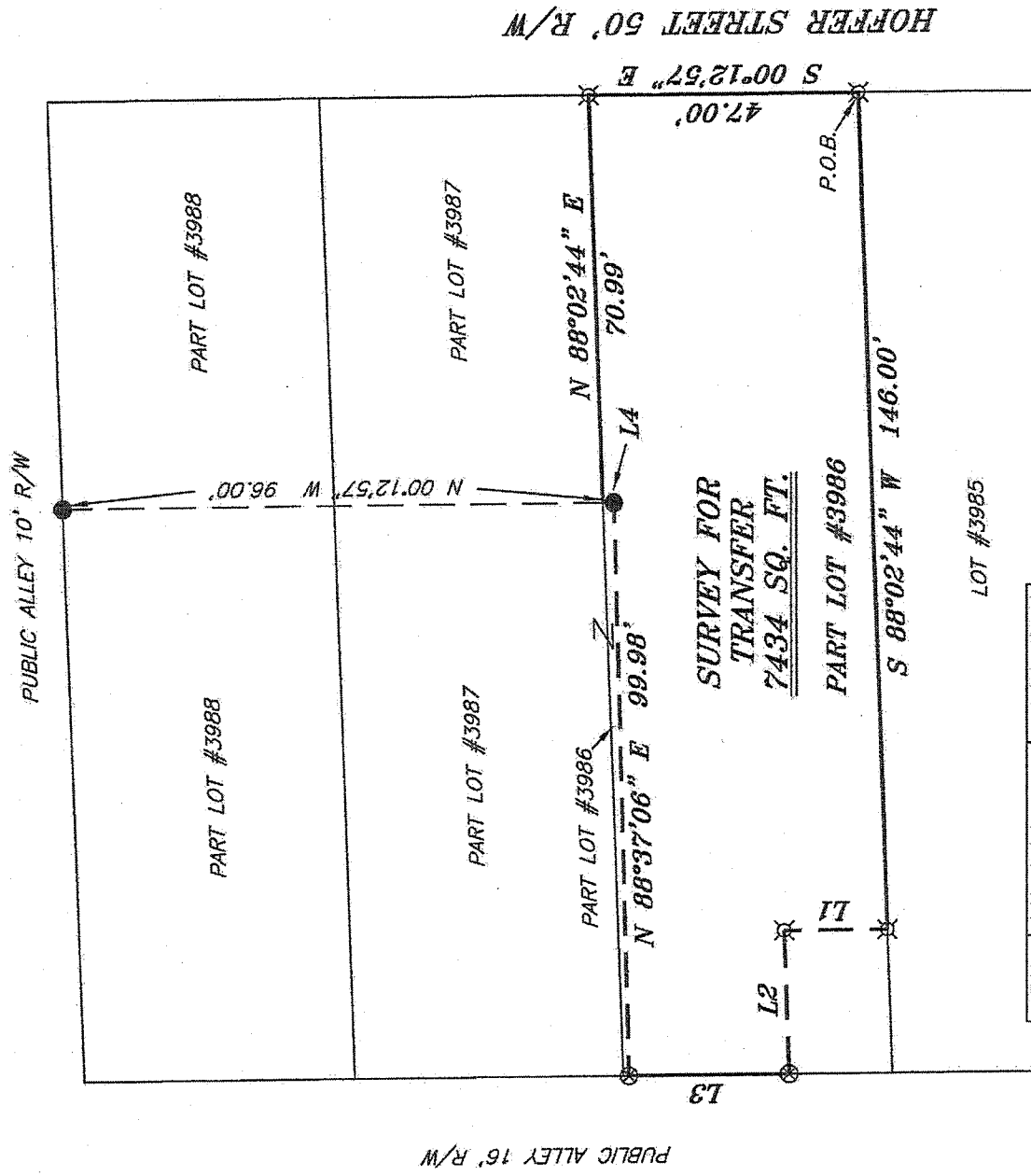


NORTH



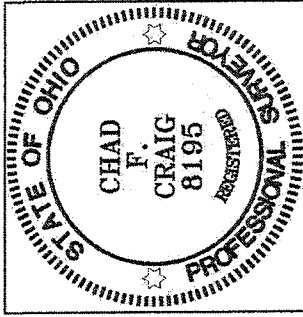
BEARINGS ARE BASED ON SURVEY M-79  
ON FILE AT THE RICHLAND COUNTY TAX  
MAP OFFICE AND ARE INTENDED TO BE  
USED FOR ANGULAR DETERMINATION ONLY.



LINE	BEARING	DISTANCE
L1	N 00°12'57" W	18.00'
L2	S 88°02'44" W	26.00'
L3	N 00°12'57" W	28.00'
L4	N 00°12'57" W	2.00'

**LEGEND**

- IRON PIN FOUND
- ⊗ 3" SURVEY MARKER SET
- ⊘ 2" MAG NAIL SPIKE SET
- ▲ RAILROAD SPIKE FOUND
- ⊠ 5/8" IRON PIN SET WITH CAP STAMPED "CRAIG 8195."



NEW SURVEY  
OF EXISTING PARCEL  
OF RICHLAND COUNTY,  
TAX MAP OFFICE  
EAC 2-4-14  
INITIAL DATE  
GG-16

*Chad F. Craig*  
SURVEY BY: CHAD F. CRAIG PS 8195  
for SELLER & CRAIG SURVEYING INC.  
52-1/2 NORTH MAIN STREET  
MANSFIELD, OHIO 44902  
(419) 525-3644  
Email: seilerandcraig@seilerandcraig.com

SURVEY PLAT FOR  
PROPERTY TRANSFER  
PART LOT #3986  
CITY OF MANSFIELD  
RICHLAND COUNTY, OHIO

Date: JANUARY 31, 2014 Scale: 1" = 30'  
HOFFER\_11

**SEILER & CRAIG SURVEYING, INC.**

Chad F. Craig, PS  
52 ½ North Main Street  
Mansfield, Ohio 44902  
Phone: 419-525-3644  
Email: seilerandcraig@seilerandcraig.com

**SURVEY DESCRIPTION**

PART LOT #3986  
CITY OF MANSFIELD  
RICHLAND COUNTY, OHIO

Situated in the City of Mansfield, County of Richland, State of Ohio and being known as part of Lot #3986 of the consecutively numbered lots in said city, and being more particularly described as follows:

Beginning for the same at an iron pin set on the southeast corner of said lot; Thence, South 88 degrees 02 minutes 44 seconds West with the south line of said lot, a distance of 146.00 feet to an iron pin set;

Thence, North 00 degrees 12 minutes 57 seconds West a distance of 18.00 feet to an iron pin set;

Thence, South 88 degrees 02 minutes 44 seconds West a distance of 25.00 feet to a 3 inch survey marker set on the west line of said lot;

Thence, North 00 degrees 12 minutes 57 seconds West with said west line, a distance of 28.00 feet to a 3 inch survey marker set;

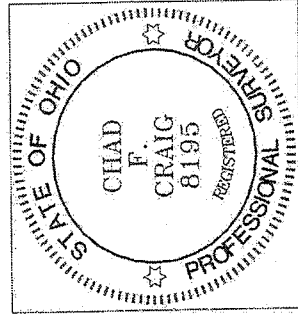
Thence, North 88 degrees 37 minutes 06 seconds East a distance of 99.98 feet to an iron pin found;

Thence, North 00 degrees 12 minutes 57 seconds West a distance of 2.00 feet to an iron pin set on the north line of said lot;

Thence, North 88 degrees 02 minutes 44 seconds East with said north line, a distance of 70.99 feet to an iron pin set on the northeast corner thereof;

Thence, South 00 degrees 12 minutes 57 seconds East with the east line of said lot 47.00 feet to the place of beginning containing 7437 square feet according to survey by Chad F. Craig P.S. #8195 for Seiler and Craig Surveying, Inc. on January 31, 2014 but subject to all easements and highways of record.

Bearings are based on survey M-79 on file at the Richland County Tax Map office and are intended to be used for angular determination only.



NEW SURVEY  
OF EXISTING PARCEL  
RICHLAND COUNTY  
TAX MAP OFFICE

EAJ INITIAL  
2-4-14 DATE

66-16

A handwritten signature in black ink that reads "Chad F. Craig".

Chad F. Craig P.S. #8195  
Seiler and Craig Surveying, Inc.