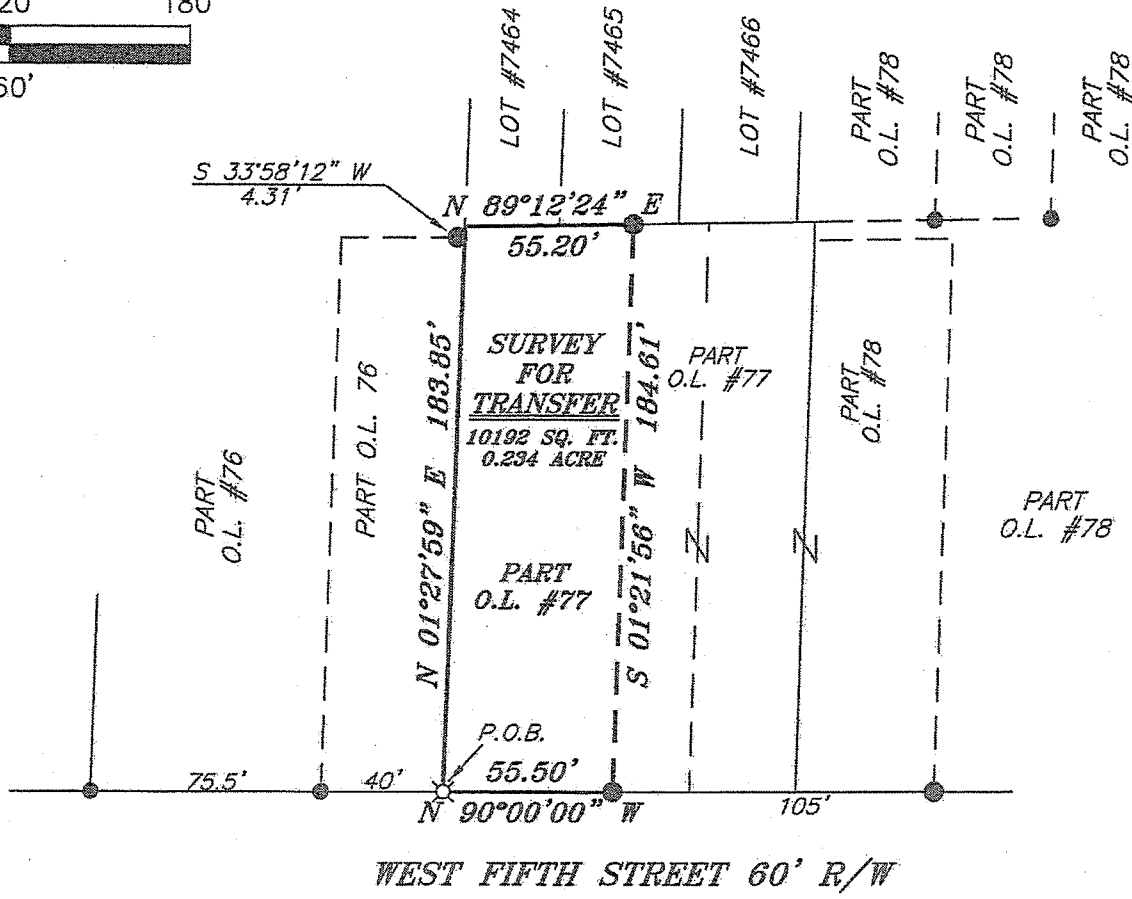
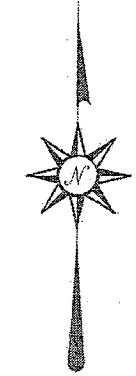


NORTH

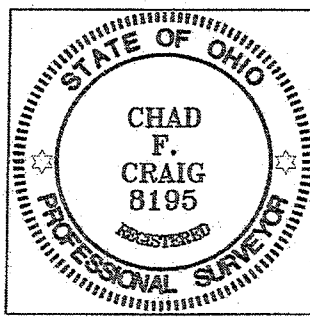


BEARINGS ARE BASED ON SURVEY BB-230 ON FILE AT THE RICHLAND COUNTY TAX MAP OFFICE AND ARE INTENDED TO BE USED FOR ANGULAR DETERMINATION ONLY.

LEGEND

- IRON PIN FOUND
- WOODEN FENCE POST FOUND
- ⊛ DRILL HOLE SET
- ▲ RAILROAD SPIKE FOUND
- ⊠ 5/8" IRON PIN SET WITH CAP STAMPED "CRAIG 8195"

NEW SURVEY
OF EXISTING PARCEL
RICHLAND COUNTY
TAX MAP OFFICE
EAK 1-13-14
INITIAL DATE
GG-04



Chad F. Craig
SURVEY BY: CHAD F. CRAIG P.S. #8195
for SEILER & CRAIG SURVEYING INC.
52-1/2 NORTH MAIN STREET
MANSFIELD, OHIO 44902
(419) 525-3644
FAX (419) 525-3696

SURVEY PLAT FOR	
PROPERTY TRANSFER	
PART OUT LOT 77 CITY OF MANSFIELD RICHLAND COUNTY, OHIO	
DATE: DECEMBER 26, 2013	SCALE: 1"=60'
FIFTH_ST_254	

SEILER & CRAIG SURVEYING, INC.

Douglas C. Seiler, PS & Chad F. Craig, PS

52 1/2 North Main Street

Mansfield, Ohio 44902

419-525-3644 Fax: 419-525-3696

www.seilerandcraig.com

SURVEY DESCRIPTION

**PART OUT LOT #77
CITY OF MANSFIELD
RICHLAND COUNTY, OHIO**

Situated in the City of Mansfield, County of Richland, State of Ohio and being known as part of Out Lot #77 in said city, and being more particularly described as follows:

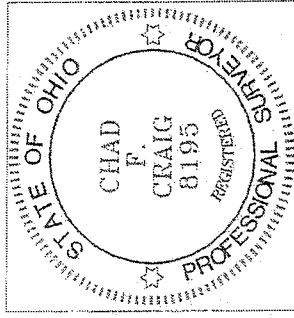
Beginning for the same at an iron pin set marking the southwest corner of said Out Lot; Thence, North 01 degree 27 minute 59 seconds East with the west line of said out lot, a distance of 183.85 feet to a point being the northwest corner thereof, said point being referenced by an iron pin found on a bearing of South 33 degrees 58 minutes 12 seconds West and at a distance of 4.31 feet, said point also being the southwest corner of Lot #7464 in said city;

Thence, North 89 degrees 12 minutes 24 seconds East with the north line of said out lot, a distance of 55.20 feet to an iron pin found;

Thence, South 01 degree 21 minutes 56 seconds West a distance of 184.61 feet to an iron pin found on the south line of said out lot;

Thence, North 90 degrees 00 minutes 00 seconds West with said south line, a distance of 55.5 feet to the place of beginning containing 10192 square feet (0.234) acre according to survey by Chad F. Craig P.S. #8195 for Seiler and Craig Surveying, Inc. on December 26, 2013 but subject to all easements and highways of record.

Bearings are based on survey BB-230 on file at the Richland County Tax Map office and are intended to be used for angular determination only.



NEW SURVEY
OF EXISTING PARCEL
RICHLAND COUNTY
TAX MAP OFFICE
EAK 1-13-14
INITIAL DATE
GG-04

A handwritten signature in cursive script that reads "Chad F. Craig".

Chad F. Craig/P.S. #8195
Seiler and Craig Surveying, Inc.