

G-125

NORTH

PARK AVENUE WEST 80' R/W



NW CORNER
OUT LOT #4

THE PLACE OF
BEGINNING

S 89°34'30" E
103.00'

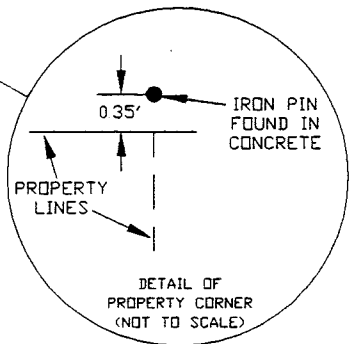
N 00°40'44" E
201.93'

S 00°40'44" W
201.93'

20800 SQ. FT.
PART OUT LOT #4

N 89°34'30" W
103.00'

24.54'



Bearings are based on an assumed
meridian and are intended to be
used for angular determination only.

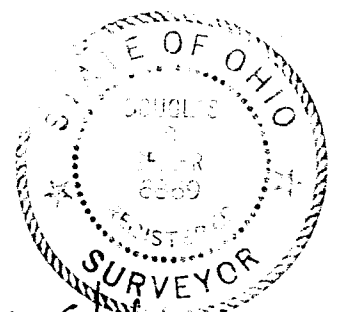
⊗ 5/8" rod with cap stamped "SEILER
6868", set

● iron pin found

⊗ drill hole set



SCALE: 1" = 50'



Douglas C. Seiler 5496

SURVEYED BY: DOUGLAS C. SEILER
REG. SURVEYOR #6869
52-1/2 NORTH MAIN ST.
MANSFIELD, OHIO
(419) 525-3644

NEW SURVEY
OF EXISTING PARCEL
TAX MAP APPROVED
J.T. 3-29-96

DETAIL PLAT FOR	
CASHAM INVESTMENT	
PART OF OUT LOT #4	
CITY OF MANSFIELD	
OHIO	
DATE: APRIL 25, 1996	SCALE: 1"=50'
DRWG. No: C962711	DRWN. BY: JEB

Douglas C. Seiler
Professional Land Surveyor

52½ North Main • Mansfield, Ohio 44902
(419) 525-3644

SURVEY DESCRIPTION

PART OF OUT LOT #4
CITY OF MANSFIELD, OHIO

Situated in the City of Mansfield, County of Richland, State of Ohio and being a part of Out Lot #4 in said city, more particularly described as follows:

Beginning for the same at a drill hole set marking the northwest corner of said Out Lot; Thence, South 89 degrees 34 minutes 30 seconds East a distance of 103.00 feet to a point, as referenced by an iron pin in concrete found at a bearing of North 00 degrees 40 minutes 44 seconds East, and at a distance of 0.35 feet from said drill hole;

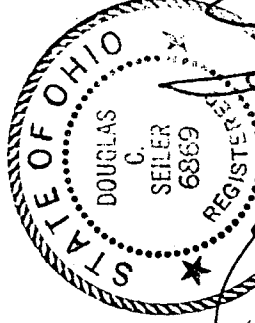
Thence, South 00 degrees 40 minutes 44 seconds West a distance of 201.93 feet to an iron pin set;

Thence, North 89 degrees 34 minutes 30 seconds West a distance of 103.00 feet to an iron pin set;

Thence, North 00 degrees 40 minutes 44 seconds East a distance of 201.93 feet to the place of beginning, containing 20,800 square feet, according to survey by Douglas C. Seiler, Professional Surveyor #6869 on April 26, 1996.

Iron pins set are 5/8" rods with caps stamped "SEILER 6869".

Bearings are based on an assumed meridian and are intended to be used for angular determination only.



Douglas C. Seiler
Douglas C. Seiler
Professional Surveyor #6869

NEW SURVEY
OF EXISTING PARCEL
TAX MAP APPROVED
DATE 5-3-96