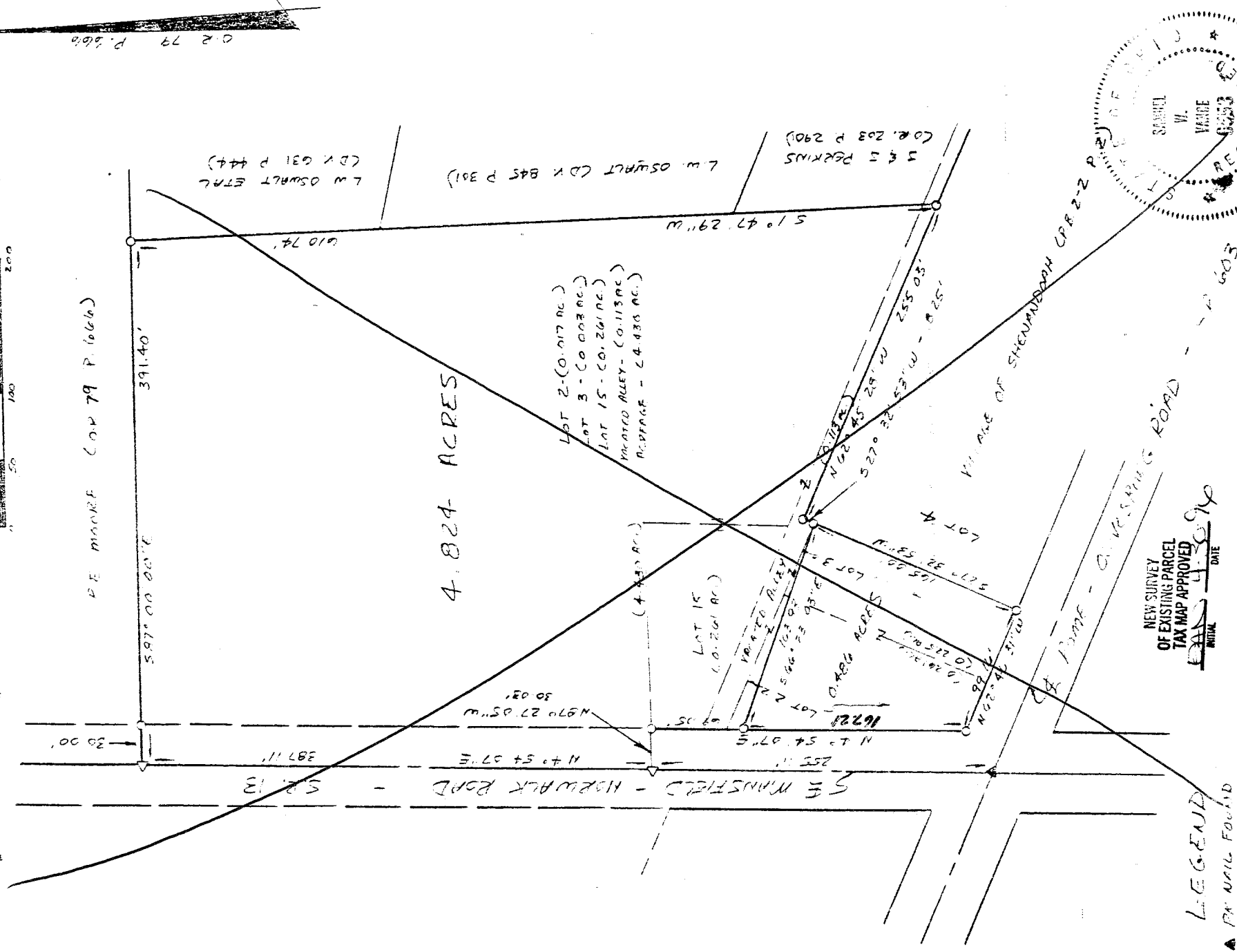
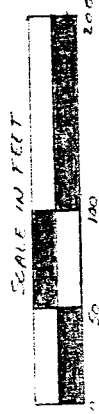


001-5

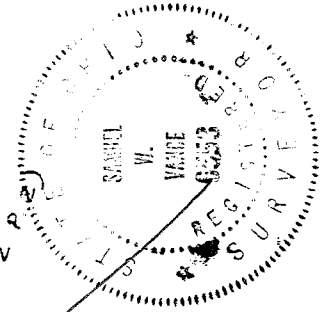
SURVEY FOR
RICHARD DUDLEY
LOTS 2, 3 & 15 AND PART OF VACATED ALLEY - VILLAGE OF SHENANDOAH,
RANGE 18, TOWNSHIP 23, N.E. QUARTER OF SECTION 34,
BLOOMINGGROVE TOWNSHIP, RICHLAND, OHIO

Scale 1"= 100' Date 4-13-79 P.B. 22 P. 2 O.R. 88 P. 397 Drawn By SPV



NEW SURVEY
OF EXISTING PARCEL
TAX MAP APPROVED
INITIAL DATE

NEW SPLIT
TAX MAP APPROVED
DATE



Samuel W. Vance
Registered Surveyor No. 6553

I hereby certify that the foregoing drawing was prepared from an actual survey of the premises.

VANCE SURVEYING
LAND SURVEYOR
28 Clinton Road, Marion, Ohio 43050

- ▲ PIN NAIL FOUND
- △ PIN NAIL SET
- 1/2" X 20" TOTAL (1" SET W/ PLASTIC "AN" STANDARD "FRANCE GREEN"

DESCRIPTION 4.824 ACRE TRACT

Being part of Lots two (2) and three (3), all of Lot fifteen (15), and part of vacated alley in the Village of Shenandoah as recorded in Plat Book 2 2 Page 2 and being part of the northeast quarter of Section 34, Township twenty three (23), Range eighteen (18), Bloominggrove Township, Richland County, State of Ohio and being part of that land of record in Official Records, Volume 88 Page 397 in the Richland County Recorder's Office and being more particularly described as follows;

Beginning for reference at a 1/2 inch iron pin set at the intersection of the east line of Mansfield-Norwalk Road (State Route 13) with the north line of Rome-Olivesburg Road (State Route 603), being the southwest corner of Lot 2 Village of Shenandoah; thence North 04 degrees 54 minutes 07 seconds East along the east line of Mansfield Norwalk Road, the west line of Lot 2, a distance of 167.21 feet to a 1/2 inch iron pin set and being the true place of beginning;

thence from the true place of beginning North 04 degrees 54 minutes 07 seconds East along the east line of Mansfield-Norwalk Road, the west line of Lot 2, a vacated alley and Lot 15, a distance of 69.05 feet to a 1/2 inch iron pin set;

thence North 87 degrees 27 minutes 05 seconds West a distance of 30.03 feet to a pk nail set in the centerline of Mansfield Norwalk Road;

thence North 04 degrees 54 minutes 07 seconds East along the centerline of Mansfield Norwalk Road a distance of 387.11 feet to a pk nail set;

thence South 87 degrees 00 minutes 00 seconds East along the southerly boundary of R.E. Moore (O.R. 79 P. 666) a distance of 391.40 feet (passing over a 1/2 inch iron pin set at 30.00 feet) to a 1/2 inch iron pin set;

thence South 01 degrees 47 minutes 29 seconds West along the westerly boundaries of L.W. Oswalt Etal. (D.V. 631 P. 444), L.W. Oswalt (D.V. 845 P. 301) and J. & J. Perkins (O.R. 203 P. 290) a distance of 610.74 feet to a 1/2 inch iron pin set in the centerline of a vacated alley;

thence North 62 degrees 45 minutes 28 seconds West along the centerline of said vacated alley a distance of 255.03 feet to a 1/2 inch iron pin set;

thence South 27 degrees 32 minutes 53 seconds West a distance of 8.25 feet to a 1/2 inch iron pin set at the northeast corner of Lot 3;

thence North 66 degrees 23 minutes 03 seconds West across Lots 2 and 3 a distance of 163.93 feet to a the place of beginning - containing 4.824 acres, more or less, of which 0.017 acres are in Lot 2, 0.003 acres are in Lot 3, 0.261 acres are in Lot 15, 0.113 acres are in the vacated alley and 4.430 acres are in the northeast quarter of Section 34.

Subject to all legal right of way of previous record.

The above description was prepared from a survey made by me, Samuel W. Vance, Registered Surveyor No. 6553 in April 1996. Bearing basis from Official Records Volume 79 Page 666. All pins set are 1/2 inch by 1/2 inch iron pins with plastic caps stamped Vance 6553.



NEW SURVEY
OF EXISTING PARCEL
TAX MAP APPROVED
INITIAL DATE

DESCRIPTION 0.486 ACRE TRACT

Being part of Lots two (2) and three (3) in the Village of Shenandoah, Richland County, State of Ohio as recorded in Plat Book 2-2 Page 2 and being part of that land of record in Official Records Volume 88 Page 397 in the Richland County Recorder's Office and being more particularly described as follows;

Beginning at a 1/2 inch iron pin set at the intersection of the east line of Mansfield-Norwalk Road (State Route 13) with the north line of Rome-Olivesburg Road (State Route 603), being the southwest corner of Lot 2 - Village of Shenandoah;

thence from the place of beginning North 04 degrees 54 minutes 07 seconds East along the east line of Mansfield-Norwalk Road, the west line of Lot 2, a distance of 167.21 feet to a 1/2 inch iron pin set;

thence South 66 degrees 23 minutes 03 seconds East across Lots 2 and 3 a distance of 163.93 feet to a 1/2 inch iron pin set at the northeast corner of Lot 3;

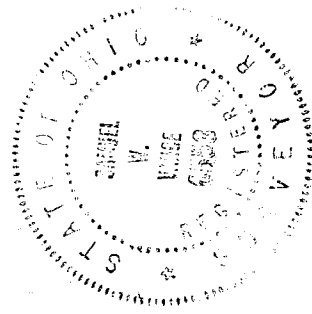
thence South 27 degrees 32 minutes 53 seconds West along the east line of Lot 3, the west line of Lot 4, a distance of 165.00 feet to a 1/2 inch iron pin set on the north line of Rome-Olivesburg Road;

thence North 62 degrees 46 minutes 31 seconds West along the north line of Rome-Olivesburg Road, the south line of Lots 3 and 2, a distance of 99.16 feet to the place of beginning containing 0.486 acres, more or less, of which 0.261 acres are in Lot 2 and 0.225 acres are in Lot 3.

Subject to all legal right of way of previous record.

The above description was prepared from a survey made by me, Samuel W. Vance, Registered Surveyor No. 6553 in April 1996. Bearing basis from Official Records Volume 79 Page 666. All pins set are 1/2 inch by 30 inch iron pins with plastic caps stamped Vance 6553.

NEW SPLIT
TAX MAP APPROVED
EWAN
INITIAL
4/30/96
DATE



DESCRIPTION - 4. ⁷⁷⁶ ACRE TRACT

Being part of Lots two (2) and three (3), all of Lot fifteen (15), and part of vacated alley in the Village of Shenandoah as recorded in Plat Book 2-2 Page 2 and being part of the northeast quarter of Section 34, Township twenty-three (23), Range eighteen (18), Bloominggrove Township, Richland County, State of Ohio and being part of that land of record in Official Records Volume 88 Page 397 in the Richland County Recorder's Office and being more particularly described as follows;

Beginning for reference at a 1/2 inch iron pin set at the intersection of the east line of Mansfield-Norwalk Road (State Route 13) with the north line of Rome-Olivesburg Road (State Route 603), being the southwest corner of Lot 2 - Village of Shenandoah; thence North 04 degrees 54 minutes 07 seconds East along the east line of Mansfield-Norwalk Road, the west line of Lot 2, a distance of 167.21 feet to a 1/2 inch iron pin set and being the true place of beginning;

thence from the true place of beginning North 04 degrees 54 minutes 07 seconds East along the east line of Mansfield-Norwalk Road, the west line of Lot 2, a vacated alley and Lot 15, a distance of 69.05 feet to a 1/2 inch iron pin set;

thence North 87 degrees 27 minutes 05 seconds West a distance of 30.03 feet to a pk nail set in the centerline of Mansfield-Norwalk Road;

thence North 04 degrees 54 minutes 07 seconds East along the centerline of Mansfield-Norwalk Road a distance of 387.11 feet to a pk nail set;

thence South 87 degrees 00 minutes 00 seconds East along the southerly boundary of R.E. Moore (O.R. 79 P. 666) a distance of 391.40 feet (passing over a 1/2 inch iron pin set at 30.00 feet) to a 1/2 inch iron pin set;

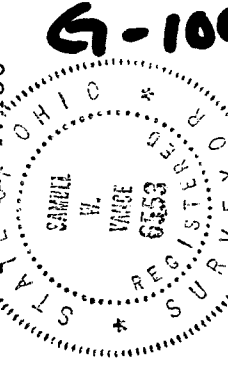
thence South 01 degrees 47 minutes 29 seconds West along the westerly boundaries of L.W. Oswalt Etal. (D.V. 631 P. 444), L.W. Oswalt (D.V. 845 P. 301) and J. & J. Perkins (O.R. 203 P. 290) a distance of 601.60 feet to a 1/2 inch iron pin set on the north line of a vacated alley;

thence North 62 degrees 45 minutes 28 seconds West along the north line of said vacated alley a distance of 251.06 feet to a 1/2 inch iron pin set;

thence South 27 degrees 32 minutes 53 seconds West a ditsance of 16.50 feet to a 1/2 inch iron pin set at the northeast corner of Lot 3;

thence North 66 degrees 23 minutes 03 seconds West across Lots 2 and 3 a distance of 163.93 feet to a the place of beginning - containing 4.776 acres, more or less, of which 0.017 acres are in Lot 2, 0.003 acres are in Lot 3, 0.261 acres are in Lot 15, 0.065 acres are in the vacated alley and 4.430 acres are in the northeast quarter of Section 34.

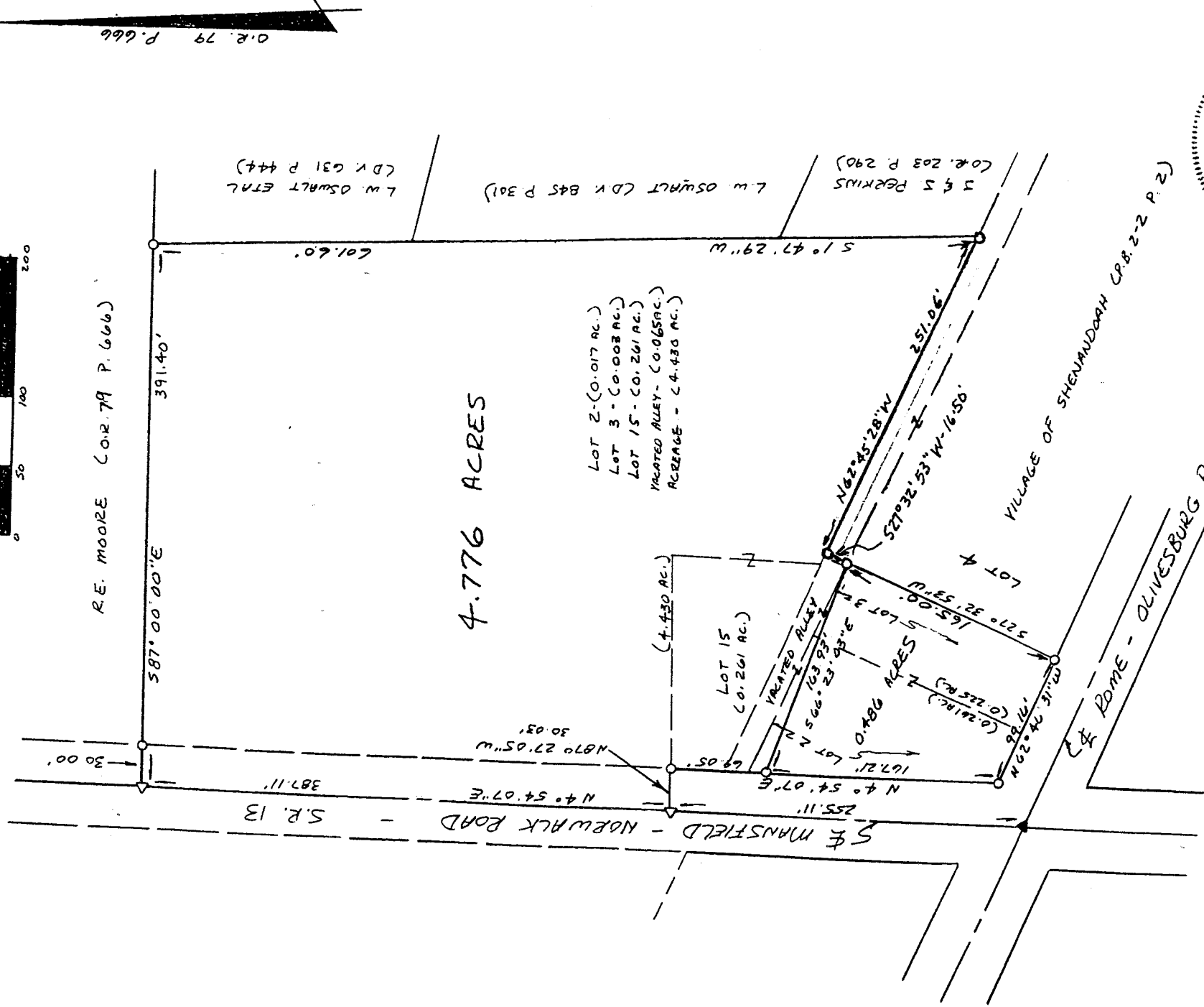
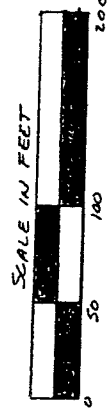
Subject to all legal right-of-way of previous record.



The above description was prepared from a survey made by me, Samuel W. Vance, Registered Surveyor No. 6553 in April 1996 and revised in August 1998. Bearing basis from Official Records Volume 79 Page 666. All pins set are 1/2 inch by 30 inch iron pins with plastic caps stamped Vance 6553.

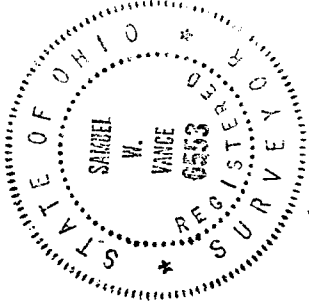
VILLAGE OF SHENANDOAH,
 N.E. QUARTER OF SECTION 34,
 BLOOMINGGROVE TOWNSHIP, RICHLAND, OHIO

Scale 1" = 100' Date 4-13-96 P.B. 2-2 P. Z O.C. 88 P. 397 Drawn By SRV
 8-13-98



LEGEND

- ▲ P.N. NAIL FOUND
- △ P.N. NAIL SET
- 1/2" x 30" IRON PIN SET W/
 PLASTIC CAP STAMPED
 "VANCE 6553"



Samuel W. Vance
 Registered Surveyor No. 6553

I hereby certify that the foregoing drawing was prepared from an actual survey of the premises.

VANCE SURVEYING

LAND SURVEYOR

200 Clinton Road Mount Vernon Ohio 43050

6-100