

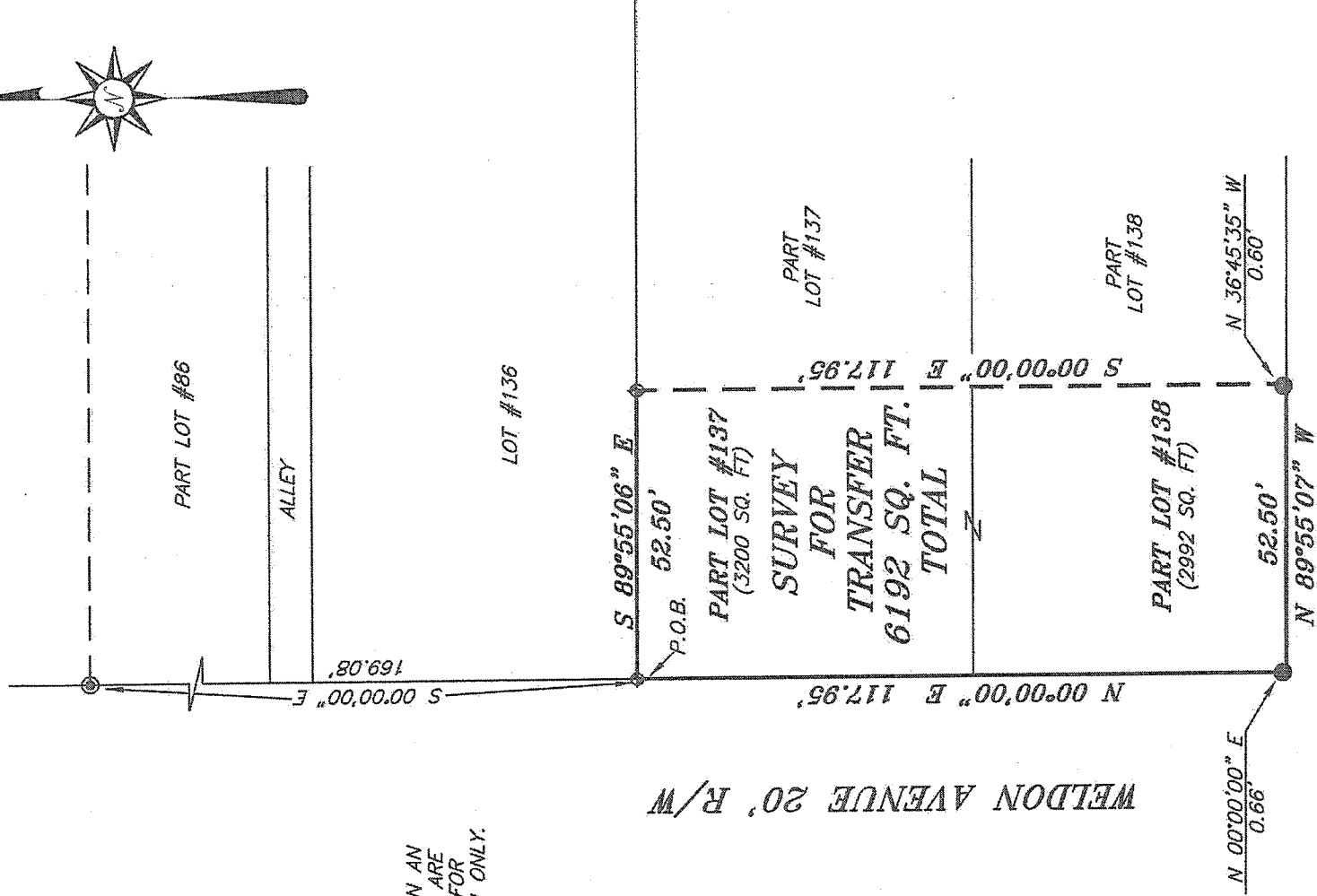


SCALE: 1" = 30'

NORTH



BEARINGS ARE BASED ON AN ASSUMED MERIDIAN AND ARE INTENDED TO BE USED FOR ANGULAR DETERMINATION ONLY.

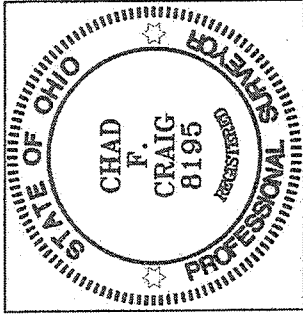


LEGEND

- IRON PIN FOUND
- ◆ DRILL HOLE IN CONCRETE SET
- ◎ IRON PIPE FOUND
- ▲ RAILROAD SPIKE FOUND
- ⊗ 5/8" IRON PIN SET WITH CAP STAMPED "CRAIG 8195."

NEW SURVEY
OF EXISTING PARCEL
RICHLAND COUNTY
TAX MAP OFFICE

INITIAL DATE
EE-301
12-17-13



Chad F. Craig

SURVEY BY: CHAD F. CRAIG PS 8195
for SEILER & CRAIG SURVEYING INC.
52-1/2 NORTH MAIN STREET
MANSFIELD, OHIO 44902
(419) 525-3644
FAX (419) 525-3696

SURVEY PLAT FOR
PROPERTY TRANSFER

PT. LOT #137 & PT. LOT #138
CITY OF MANSFIELD
RICHLAND COUNTY, OHIO

Date: DECEMBER 4, 2013 Scale: 1" = 30'

PAW_82

SEILER & CRAIG SURVEYING, INC.

Douglas C. Seiler, PS & Chad F. Craig, PS

52 1/2 North Main Street

Mansfield, Ohio 44902

419-525-3644 Fax 419-525-3696

www.seilerandcraig.com

SURVEY DESCRIPTION

PART LOT #137
AND PART LOT #138
CITY OF MANSFIELD
RICHLAND COUNTY, OHIO

Situated in the City of Mansfield, County of Richland, State of Ohio and being known as part of Lot #137 and part of Lot #138 of the consecutively numbered lots in said city, and being more particularly described as follows:

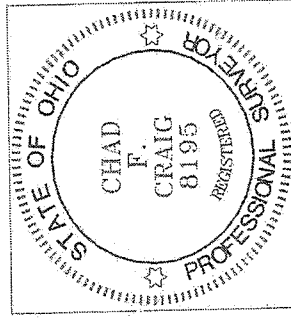
Beginning for the same at a drill hole set in concrete marking the northwest corner of Lot #137 in said city; Thence, South 89 degrees 55 minutes 06 seconds East with the north line of said lot, a distance of 52.50 feet to a drill hole set in concrete;

Thence, South 00 degrees 00 minutes 00 seconds East a distance of 117.95 feet to a point on the south line of Lot #138 and referenced by an iron pin found on a bearing of North 36 degrees 45 minutes 35 seconds West and at a distance of 0.60 feet;

Thence, North 89 degrees 55 minutes 07 seconds West with said south line, a distance of 52.50 feet to the southwest corner thereof, said corner referenced by an iron pin found on a bearing of North 00 degrees 00 minutes 00 seconds East and at a distance of 0.66 feet;

Thence, North 00 degrees 00 minutes 00 seconds East with the west line of said lot, passing through said iron pin and the northerly prolongation thereof, a distance of 117.95 feet to the place of beginning containing a total of 6192 square feet, of which 3200 square feet are located within a part of Lot #137 and 2992 square feet are located within a part of Lot #138 according to survey by Chad F. Craig P.S. #8195 for Seiler and Craig Surveying, Inc. on May 20, 2013 but subject to all easements of record.

Bearings are based on assumed meridian and are intended to be used for angular determination only.



NEW SURVEY
OF EXISTING PARCEL
RICHLAND COUNTY
TAX MAP OFFICE

EAK 12-12-B
INITIAL DATE
EE-301

Chad F. Craig P.S. #8195
Seiler and Craig Surveying, Inc.