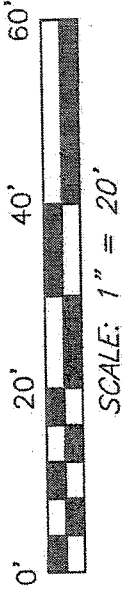
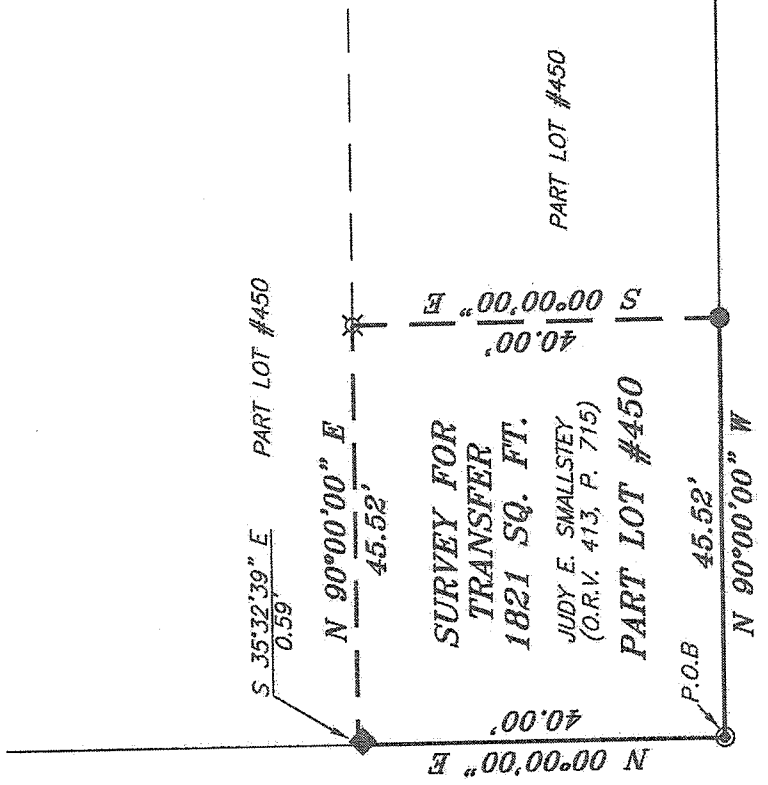


NOR



BEARINGS ARE BASED ON AN ASSUMED MERIDIAN AND ARE INTENDED TO BE USED FOR ANGULAR DETERMINATION ONLY.

SOUTH FRANKLIN AVENUE 60' R/W

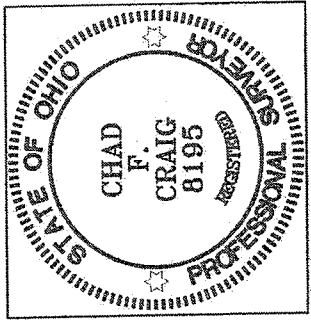


LEGEND

- IRON PIN FOUND
- ◎ IRON PIPE FOUND
- ◆ METAL T POST FOUND
- ▲ RAILROAD SPIKE FOUND
- ⊗ 5/8" IRON PIN SET WITH CAP STAMPED "CRAIG 8195."

NEW SURVEY OF EXISTING PARCEL RICHLAND COUNTY TAX MAP OFFICE

FAK 9-27-13
INITIAL DATE
EE-232



Chad F. Craig

SURVEY BY: CHAD F. CRAIG PS 8195
for SEILER & CRAIG SURVEYING INC.
52-1/2 NORTH MAIN STREET
MANSFIELD, OHIO 44902
(419) 525-3644
FAX (419) 525-3696

SURVEY PLAT FOR
PROPERTY TRANSFER
PART LOT #450
CITY OF MANSFIELD
RICHLAND COUNTY, OHIO
Date: SEPTEMBER 25, 2013 Scale: 1" = 20'
FRANKLIN_189.DWG

SEILER & CRAIG SURVEYING, INC.

Douglas C. Seiler, PS & Chad F. Craig, PS

52 1/2 North Main Street

Mansfield, Ohio 44902

419-525-3644 Fax: 419-525-3696

www.seilerandcraig.com

SURVEY DESCRIPTION

PART LOT #450
CITY OF MANSFIELD
RICHLAND COUNTY, OHIO

Situated in the City of Mansfield, County of Richland, State of Ohio and being known as part of Lot #450 of the consecutively numbered lots in said city, and being more particularly described as follows:

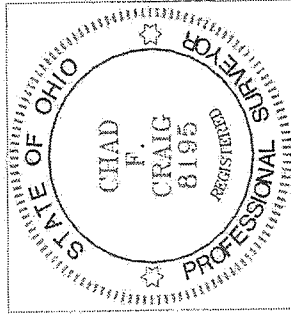
Beginning for the same at an iron pipe found and accepted as marking the southwest corner of said lot; Thence North 00 degrees 00 minutes 00 seconds East with the west line of said lot, a distance of 40.00 feet to a point referenced by a metal T post found on a bearing of South 35 degrees 32 minutes 39 seconds East and at a distance of 0.59 feet;

Thence, North 90 degrees 00 minutes 00 seconds East a distance of 45.52 feet to an iron pin set;


Thence, South 00 degrees 00 minutes 00 seconds East a distance of 40.00 feet to an iron pin found on the south line of said lot;

Thence, North 90 degrees 00 minutes 00 seconds West with said south line a distance of 45.52 feet to the place of beginning containing 1821 square feet according to survey by Chad F. Craig P.S. #8195 for Seiler and Craig Surveying, Inc. on September 25, 2013 but subject to all easements of record.

Bearings are based and assumed meridian and are intended to be used for angular determination only.



NEW SURVEY
OF EXISTING PARCEL
RICHLAND COUNTY
TAX MAP OFFICE
EAK INITIAL
9-27-13 DATE
EE-232


Chad F. Craig P.S. #8195
Seiler and Craig Surveying, Inc.