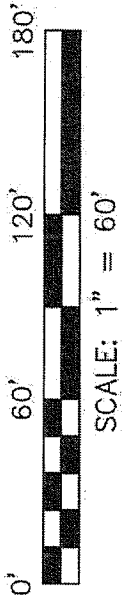
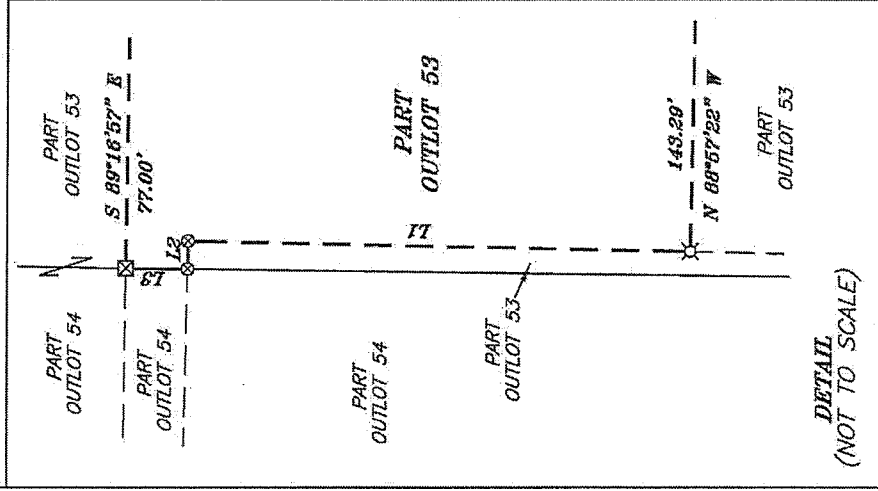
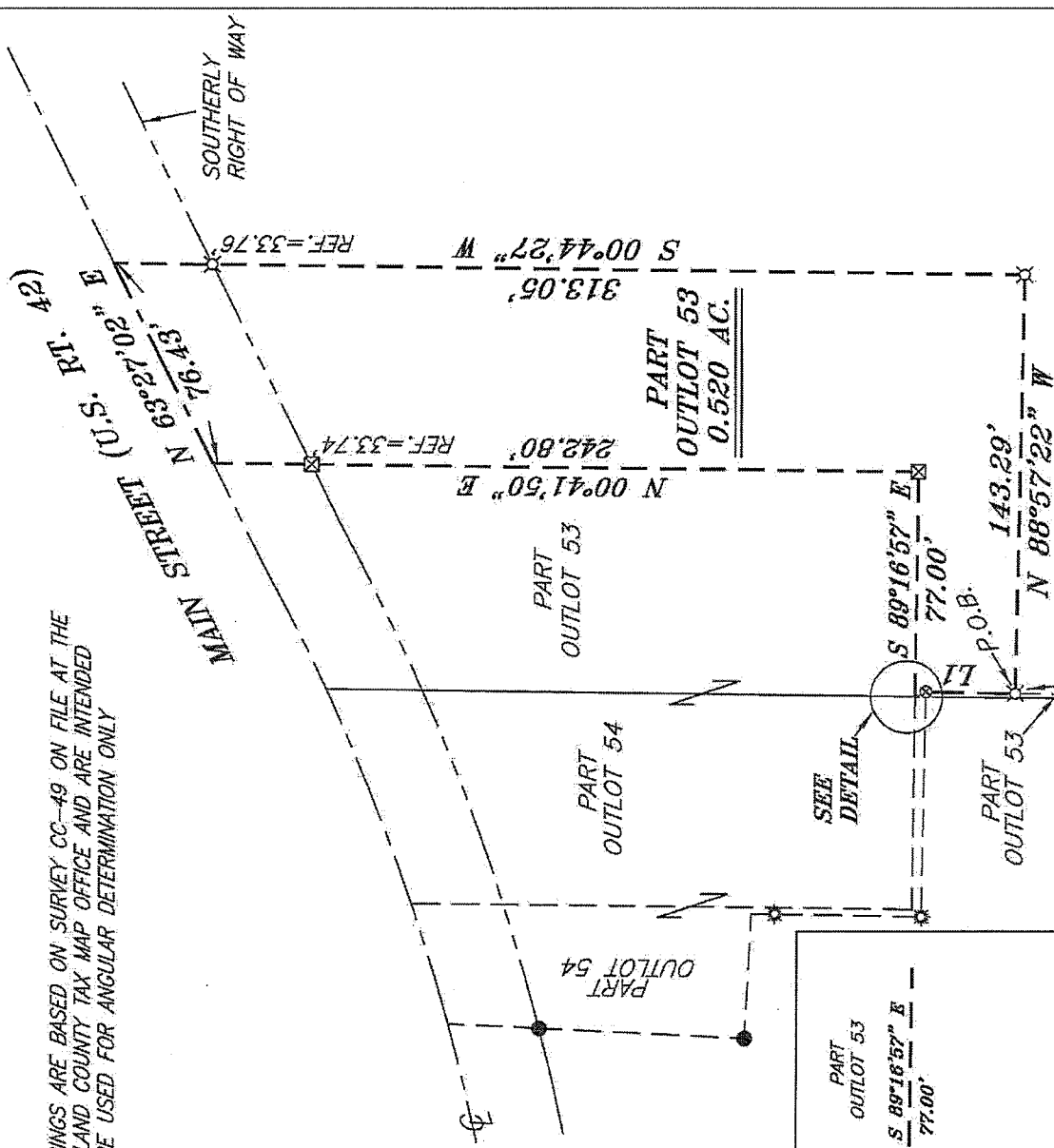


NORTH



BEARINGS ARE BASED ON SURVEY CC-49 ON FILE AT THE RICHLAND COUNTY TAX MAP OFFICE AND ARE INTENDED TO BE USED FOR ANGULAR DETERMINATION ONLY

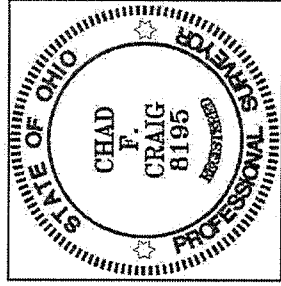


LINE	BEARING	DISTANCE
L1	N 01°10'52" E	30.66'
L2	N 88°51'48" W	1.69'
L3	N 00°43'29" E	3.76'

NEW SPLIT
RICHLAND COUNTY
TAX MAP OFFICE

DATE
7-9-13
INITIAL
EE-171

DETAIL
(NOT TO SCALE)



LEGEND

- IRON PIN FOUND
- ⊠ CHISELED "X" IN CONCRETE SET
- ▲ RAILROAD SPIKE FOUND
- ⊙ 3 INCH SURVEY SPIKE FOUND
- ✱ DRILL HOLE FOUND
- ⊗ 5/8" IRON PIN SET WITH CAP
- ⊘ STAMPED "CRAIG 8195"

Chad F. Craig

SURVEY BY: CHAD F. CRAIG P.S. #8195
for SEILER & CRAIG SURVEYING INC.
52-1/2 NORTH MAIN STREET
MANSFIELD, OHIO 44902
(419) 525-3644
FAX (419) 525-3696

SURVEY PLAT FOR
PROPERTY TRANSFER

PART OUTLOT 53
VILLAGE OF LEXINGTON
RICHLAND COUNTY, OHIO

DATE: JULY 3, 2013 SCALE: 1"=60'

BUCKS_2013

SEILER & CRAIG SURVEYING, INC.

Douglas C. Seiler, PS & Chad F. Craig, PS
52 1/2 North Main Street
Mansfield, Ohio 44902
419-525-3644 Fax 419-525-3696
www.seilerandcraig.com

SURVEY DESCRIPTION

PART OUTLOT 53
VILLAGE OF LEXINGTON,
RICHLAND COUNTY, OHIO

Situated in the Village of Lexington, County of Richland, State of Ohio and being known as part of Outlot 53, and being more particularly described as follows:

Commencing at an iron pin found and accepted as marking the southeast corner of Outlot 54, the same as being a point on the west line of Outlot 53, Thence, North 01 degree 10 minutes 52 seconds East a distance of 181.29 feet to an iron pin set, the place of beginning of the parcel herein described;

Thence, continuing North 01 degree 10 minutes 52 seconds East a distance of 30.66 feet to a 3 inch survey spike found;

Thence, North 88 degrees 51 minutes 48 seconds West a distance of 1.69 feet to a 3 inch survey spike found, on the west line of Outlot 53;

Thence, North 00 degrees 43 minutes 29 seconds East with said west line a distance of 3.76 feet to a chiseled "X" in concrete set;

Thence, South 89 degrees 16 minutes 57 seconds East a distance of 77.00 feet to a chiseled "X" in concrete set;

Thence, North 00 degrees 41 minutes 50 seconds East passing through a chiseled "X" in concrete set for reference at a distance of 209.06 feet, a total distance of 242.80 feet to a point in the centerline of Main Street (U.S. Route 42);

Thence, North 63 degrees 27 minutes 02 seconds East with said centerline a distance of 76.43 feet to a point referenced by an iron pin set on a bearing of South 00 degrees 44 minutes 27 seconds West and at a distance of 33.76 feet;

Thence, South 00 degrees 44 minutes 27 seconds West passing through said iron pin set, a total distance of 313.05 feet to an iron pin set;

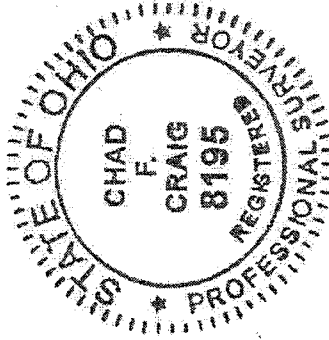
Thence, North 88 degrees 57 minutes 22 seconds West a distance of 143.29 feet to the place of beginning, containing a total of 0.520 acre, according to survey by Chad F. Craig P.S. #8195 for Seiler and Craig Surveying, Inc. on July 3, 2013, but subject to all right of ways and easements of record.

Iron pins set are 5/8" rods with caps stamped "CRAIG 8195".

Bearings are based on survey CC-49 on file at the Richland County Tax Map Office and are intended to be used for angular determination only.

The grantees, his heirs and assigns do hereby covenant and agree that the parcel of land described in this instrument or any portion thereof does not constitute a principal building site under applicable zoning.

NEW SPLIT
RICHLAND COUNTY
TAX MAP OFFICE
FAX 7-9-13
INITIAL DATE
EE-171



Chad F. Craig
Chad F. Craig P.S. #8195
for Seiler and Craig Surveying, Inc.