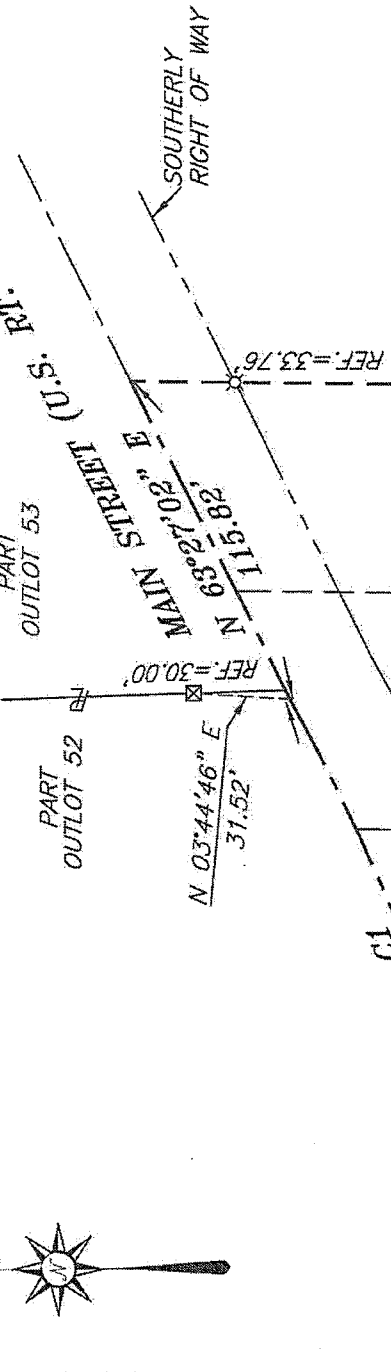


NORTH



SCALE: 1" = 60'



1.342 ACRES
TOTAL

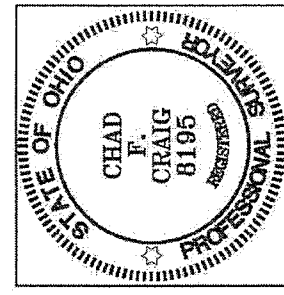
LINE	BEARING	DISTANCE
L1	N 01°10'52" E	30.66'
L2	N 88°51'48" W	76.97'
L3	N 00°57'31" E	58.19'
L4	N 86°54'04" W	42.69'
L5	N 02°48'13" E	102.36'

CURVE	RADIUS	DELTA ANGLE	ARC LENGTH	CHORD BEARING	CHORD LENGTH
C1	716.20'	13°33'46"	169.58'	N 87°51'42" E	169.14'

BEARINGS ARE BASED ON SURVEY CC-49 ON FILE AT THE RICHLAND COUNTY TAX MAP OFFICE AND ARE INTENDED TO BE USED FOR ANGULAR DETERMINATION ONLY.

NEW SURVEY
OF EXISTING PARCEL
RICHLAND COUNTY
TAX MAP, OFFICE

DATE 7-8-13
INITIAL EE-1169



LEGEND

- IRON PIN FOUND
- ☒ CHISELED "X" IN CONCRETE FOUND
- ▲ RAILROAD SPIKE FOUND
- ⊗ 3 INCH SURVEY SPIKE FOUND
- ⊛ DRILL HOLE FOUND
- ⊕ 5/8" IRON PIN SET WITH CAP STAMPED "CRAIG 8195"

Chad F. Craig

SURVEY BY: CHAD F. CRAIG P.S. #8195
for SEILER & CRAIG SURVEYING INC.
52-1/2 NORTH MAIN STREET
MANSFIELD, OHIO 44902
(419) 525-3644
FAX (419) 525-3696

SURVEY FLAT FOR
PROPERTY TRANSFER
PART OUTLOTS 53 & 54 VILLAGE OF LEXINGTON RICHLAND COUNTY, OHIO
DATE: JULY 3, 2013 SCALE: 1"=60'
BUCKS_2013

SEILER & CRAIG SURVEYING, INC.

Douglas C. Seiler, PS & Chad F. Craig, PS

52 1/2 North Main Street

Mansfield, Ohio 44902

419-525-3644 Fax 419-525-3696

www.seilerandcraig.com

SURVEY DESCRIPTION

PARTS OUTLOT 53 & 54
VILLAGE OF LEXINGTON,
RICHLAND COUNTY, OHIO

Situated in the Village of Lexington, County of Richland, State of Ohio and being known as parts of Outlot 53 & 54, and being more particularly described as follows:

Commencing at an iron pin found and accepted as marking the southeast corner of Outlot 54, the same as being a point on the west line of Outlot 53, Thence, North 01 degree 10 minutes 52 seconds East a distance of 181.29 feet to an iron pin set, the place of beginning of the parcel herein described;

Thence, continuing North 01 degree 10 minutes 52 seconds East a distance of 30.66 feet to a 3 inch survey spike found;

Thence, North 88 degrees 51 minutes 48 seconds West a distance of 76.97 feet to a drill hole found;

Thence, North 00 degrees 57 minutes 31 seconds East passing through a drill hole found for reference at a distance of 53.19 feet, a total distance of 58.19 feet to a point;

Thence, North 86 degrees 54 minutes 04 seconds West a distance of 42.69 feet to an iron pin found;

Thence, North 02 degrees 48 minutes 13 seconds East passing through an iron pin found for reference at a distance of 70.86 feet, a total distance of 102.36 feet to a point in the centerline of Main Street (U.S. Route 42);

Thence, with said centerline and with a curve to the left having a central angle of 13 degrees 33 minutes 46 seconds, a radius of 716.20 feet, an arc length of 169.53 feet, a chord bearing of North 67 degrees 51 minutes 42 seconds East, and a chord distance of 169.14 feet to a point referenced by a chiseled "X" in concrete found on a bearing of North 03 degrees 44 minutes 46 seconds East and at a distance of 31.52 feet;

Thence, North 63 degrees 27 minutes 02 seconds East with said centerline a distance of 115.82 feet to a point referenced by an iron pin set on a bearing of South 00 degrees 44 minutes 27 seconds West and at a distance of 33.76 feet;

Thence, South 00 degrees 44 minutes 27 seconds West passing through said iron pin set, a total distance of 313.05 feet to an iron pin set;

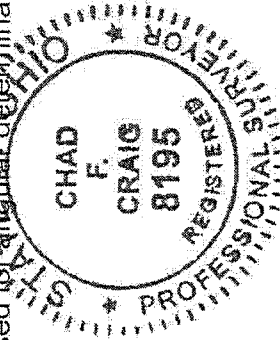
Thence, North 88 degrees 57 minutes 22 seconds West a distance of 143.29 feet to the place of beginning, containing a total of 1.342 acres of which 0.913 acres are located in Part Outlot 53 and 0.429 acres are located in Part Outlot 54, according to survey by Chad F. Craig P.S. #8195 for Seiler and Craig Surveying, Inc. on July 3, 2013, but subject to all right of ways and easements of record.

Iron pins set are 5/8" rods with caps stamped "CRAIG 8195".

Bearings are based on survey CC-49 on file at the Richland County Tax Map Office and are intended to be used for a final determination only.

NEW SURVEY
OF EXISTING PARCEL
RICHLAND COUNTY,
TAX MAP OFFICE

EAK INITIAL
7-8-13 DATE
EAK-1169



Chad F. Craig

Chad F. Craig P.S. #8195
for Seiler and Craig Surveying, Inc.