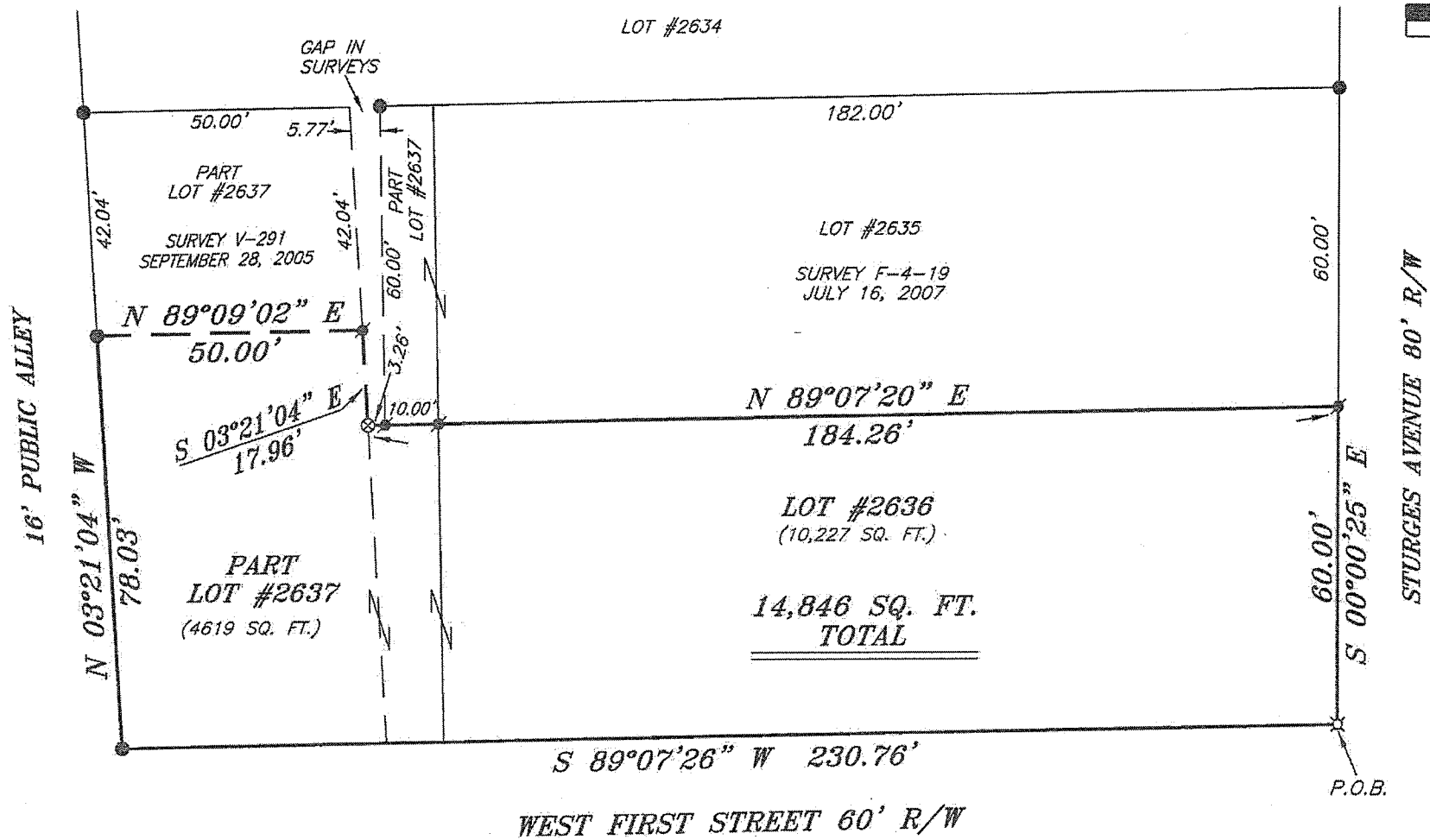
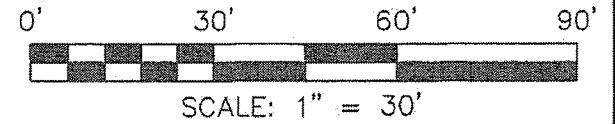


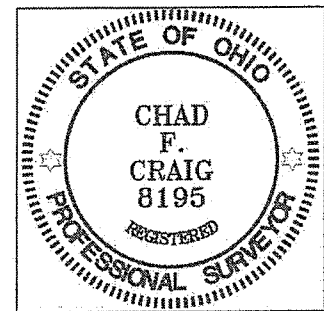
NORTH



LEGEND

- IRON PIN FOUND
- ⊛ MAG NAIL SPIKE FOUND
- ⊗ 3" SURVEY SPIKE SET
- ▲ RAILROAD SPIKE FOUND
- ⊗ 5/8" IRON PIN SET WITH CAP STAMPED "CRAIG 8195"

NEW SURVEY
OF EXISTING PARCEL
RICHLAND COUNTY,
TAX MAP OFFICE
EAK 7-8-13
INITIAL DATE
EE-160



Chad F. Craig
SURVEY BY: CHAD F. CRAIG P.S. #8195
for SEILER & CRAIG SURVEYING INC.
52-1/2 NORTH MAIN STREET
MANSFIELD, OHIO 44902
(419) 525-3644

BEARINGS ARE BASED ON SURVEY F-4-19 ON FILE AT THE
RICHLAND COUNTY TAX MAP OFFICE AND ARE INTENDED
TO BE USED FOR ANGULAR DETERMINATION ONLY

SURVEY PLAT FOR	
YOUNG	
LOT #2636 & PART LOT #2637 CITY OF MANSFIELD RICHLAND COUNTY, OHIO	
DATE: JUNE 21, 2013	SCALE: 1"=30'
STURGES_AVE_82	

SEILER & CRAIG SURVEYING, INC.

Douglas C. Seiler, PS & Chad F. Craig, PS
52 1/2 North Main Street
Mansfield, Ohio 44902
419-525-3644 Fax 419-525-3696
www.seilerandcraig.com

SURVEY DESCRIPTION

LOT #2636 & PART LOT #2637
CITY OF MANSFIELD
RICHLAND COUNTY, OHIO

Situated in the City of Mansfield, County of Richland, State of Ohio and being known as Lot #2636 & Part Lot #2637 of the consecutively numbered lots in said city, and being more particularly described as follows:

Beginning for the same at an iron pin set on the southeast corner of Lot #2636, Thence, South 89 degrees 07 minutes 26 seconds West with the south line of said lot and the westerly prolongation there of a distance of 230.76 feet to an iron pin found marking the southwest corner of Lot #2637;

Thence, North 03 degrees 21 minutes 04 seconds West with the west line of Lot #2637 a distance of 78.03 feet to an iron pin found;

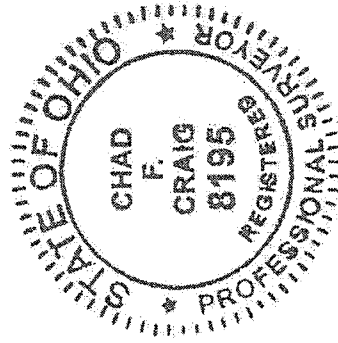
Thence, North 89 degrees 09 minutes 02 seconds East a distance of 50.00 feet to a Mag Nail spike found;

Thence, South 03 degrees 21 minutes 04 seconds East a distance of 17.96 feet to a 3 inch survey spike set;

Thence, North 89 degrees 07 minutes 20 seconds East passing through a Mag Nail spike found at a distance of 3.26 feet and at a distance of 13.26 feet, a total distance of 184.26 feet to an iron pin found marking the northeast corner of Lot #2636;

Thence, South 00 degrees 00 minutes 25 seconds East with the east line of said lot a distance of 60.00 feet to the place of beginning containing a total of 14,846 square feet, of which 10,227 square feet are located in Lot #2636 and 4619 square feet are located in Part Lot #2637 according to survey by Chad F. Craig P.S. #8195 for Seiler and Craig Surveying, Inc. on June 21, 2013 but subject to all easements of record.

Bearings are based on survey F-4-19 on file at the Richland County Tax Map office and are intended to be used for angular determination only.



Chad F. Craig

Chad F. Craig P.S. #8195
Seiler and Craig Surveying, Inc.

NEW SURVEY
OF EXISTING PARCEL
RICHLAND COUNTY
TAX MAP OFFICE

PAK INITIAL DATE
7-8-13
EE-160