

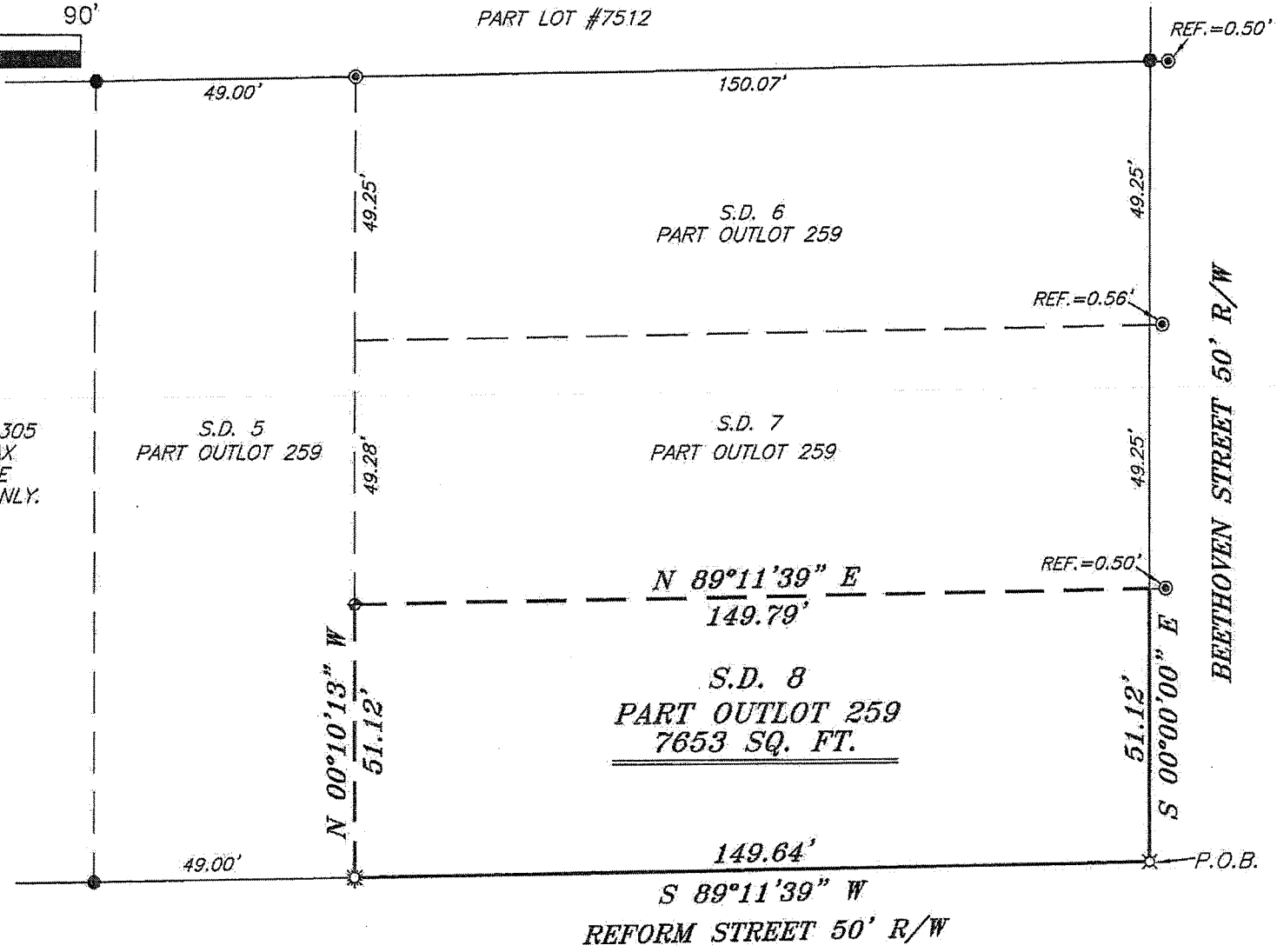
PART LOT #7512

NORTH



BEARINGS ARE BASED ON SURVEY N-305  
ON FILE AT THE RICHLAND COUNTY TAX  
MAP OFFICE AND ARE INTENDED TO BE  
USED FOR ANGULAR DETERMINATION ONLY.

NEW SURVEY  
OF EXISTING PARCEL  
RICHLAND COUNTY  
TAX MAP OFFICE  
FAK 5-30-13  
INITIAL DATE  
EE-119



*Chad F. Craig*  
 SURVEY BY: CHAD F. CRAIG P.S. #8195  
 for SEILER & CRAIG SURVEYING INC.  
 52-1/2 NORTH MAIN STREET  
 MANSFIELD, OHIO 44902  
 (419) 525-3644  
 FAX (419) 525-3696



- LEGEND**
- IRON PIN FOUND
  - ⊙ IRON PIPE FOUND IN CONCRETE
  - ◆ DRILL HOLE SET IN CONCRETE
  - ⊛ DRILL HOLE FOUND IN CONCRETE
  - ⊠ 5/8" IRON PIN SET WITH CAP STAMPED "CRAIG 8195"

SURVEY PLAT FOR PROPERTY TRANSFER	
PART OUTLOT 259 S.D. 8 CITY OF MANSFIELD RICHLAND COUNTY, OHIO	
DATE: MAY 22, 2013	SCALE: 1"=30'
BEETHOVEN_ST_534	

**SEILER & CRAIG SURVEYING, INC.**

Douglas C. Seiler, PS & Chad F. Craig, PS

52 1/2 North Main Street

Mansfield, Ohio 44902

419-525-3644 Fax: 419-525-3696

www.seilerandcraig.com

**SURVEY DESCRIPTION**

PART OUTLOT 259 S.D. 8  
CITY OF MANSFIELD  
RICHLAND COUNTY, OHIO

Situated in the City of Mansfield, County of Richland, State of Ohio and being known as part of Outlot 259 S.D.8 and being more particularly described as follows:

Beginning for the same at an iron pin set marking the southeast corner of Outlot 259, Thence, South 89 degrees 11 minutes 39 seconds West with the south line of said outlot a distance of 149.64 feet to a drill hole found in concrete;

Thence, North 00 degrees 10 minutes 13 seconds West a distance of 51.12 feet to a drill hole set in concrete;

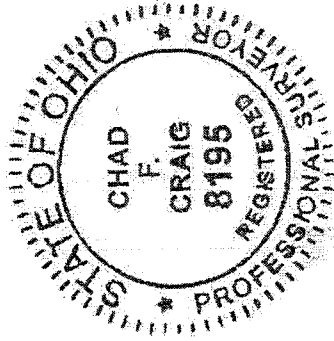
Thence, North 89 degrees 11 minutes 39 seconds East a distance of 149.79 feet to a point on the east line of said outlot and referenced by an iron pipe found in concrete on a bearing of North 89 degrees 11 minutes 39 seconds East and a distance of 0.50 feet;

Thence, South 00 degrees 00 minutes 00 seconds East with the east line of said outlot a distance of 51.12 feet to the place of beginning containing a total of 7653 square feet, according to survey by Chad F. Craig P.S. #8195 for Seiler and Craig Surveying, Inc. on May 22, 2013 but subject to all easements and right of ways of record.

Bearings are based on survey N-305 on file at the Richland County Tax Map office and are intended to be used for angular determination only.

NEW SURVEY  
OF EXISTING PARCEL  
RICHLAND COUNTY  
TAX MAP OFFICE

INITIAL **FAK**  
DATE **5-30-13**  
**EE-119**



*Chad F. Craig*

Chad F. Craig P.S. #8195  
Seiler and Craig Surveying, Inc.