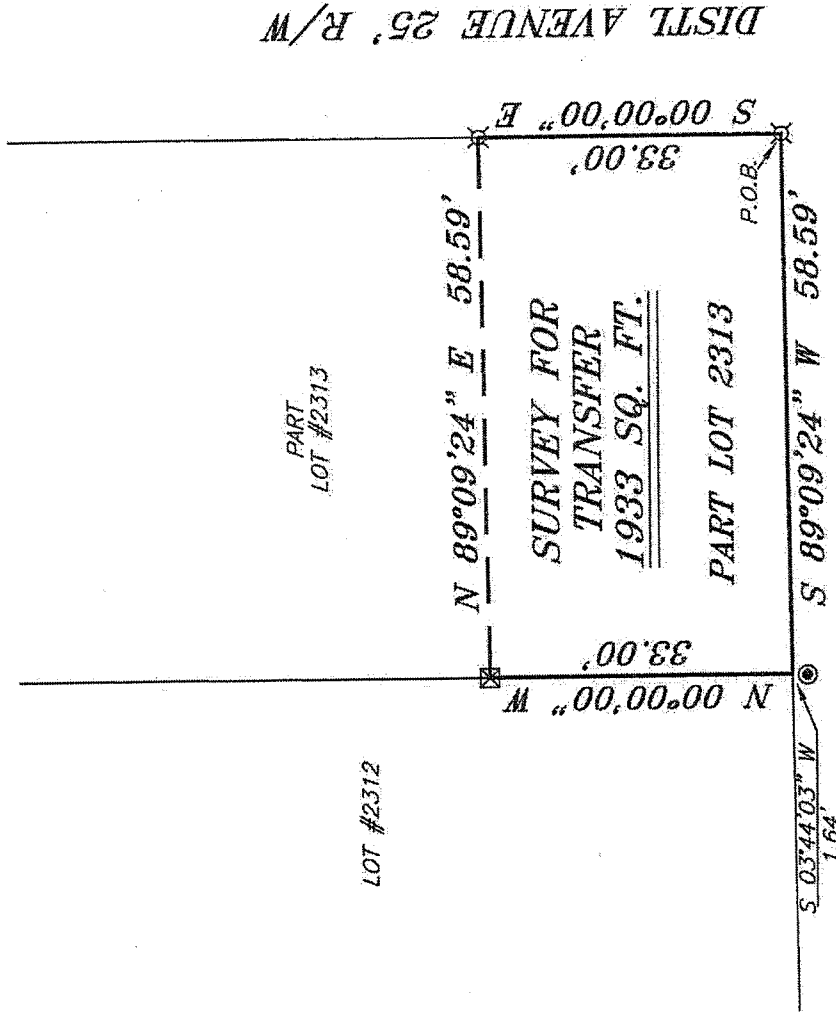


NOR



BEARINGS ARE BASED ON SURVEY H-12
ON FILE AT THE RICHLAND COUNTY TAX
MAP OFFICE AND ARE INTENDED TO BE
USED FOR ANGULAR DETERMINATION ONLY.



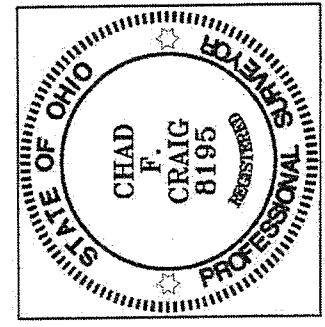
HOLLY DRIVE 20' R/W

PART LOT #7714

LEGEND

- IRON PIN FOUND
- ⊙ IRON PIPE FOUND
- ⊠ CHISLED "X" SET IN RETAINING WALL
- ▲ RAILROAD SPIKE FOUND
- ⊗ 5/8" IRON PIN SET WITH CAP STAMPED "CRAIG 8195."

NEW SURVEY
OF EXISTING PARCEL
OF RICHLAND COUNTY
TAX MAP, OFFICE
EAK 5-29-13
INITIAL DATE
EE-114



Chad F. Craig
SURVEY BY: CHAD F. CRAIG PS 8195
for SEILER & CRAIG SURVEYING, INC.
52-1/2 NORTH MAIN STREET
MANSFIELD, OHIO 44902
(419) 525-3644
FAX (419) 525-3696

SURVEY PLAT FOR
PROPERTY TRANSFER
PART LOT #2313 CITY OF MANSFIELD RICHLAND COUNTY, OHIO
Date: MAY 21, 2013 Scale: 1" = 20'
DISTL_AVE_104.DWG

SEILER & CRAIG SURVEYING, INC.

Douglas C. Seiler, PS & Chad F. Craig, PS

52 1/2 North Main Street

Mansfield, Ohio 44902

419-525-3644 Fax: 419-525-3696

www.seilerandcraig.com

SURVEY DESCRIPTION

PART LOT #2313
CITY OF MANSFIELD
RICHLAND COUNTY, OHIO

Situated in the City of Mansfield, County of Richland, State of Ohio and being known as part of Lot #2313 of the consecutively numbered lots in said city, and being more particularly described as follows:

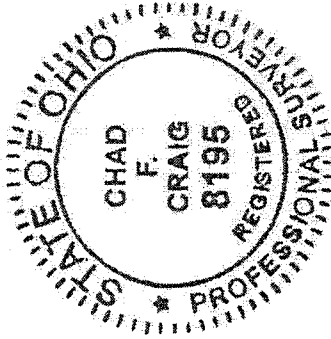
Beginning for the same at an iron pin set on the southeast corner of said lot; Thence, South 89 degrees 09 minutes 24 seconds West with the south line of said lot, a distance of 58.59 feet to the southwest corner thereof, said corner referenced by an iron pin found on a bearing of South 03 degrees 44 minutes 03 seconds West and at a distance of 1.64 feet;

Thence, North 00 degrees 00 minutes 00 seconds West with the west line of said lot, a distance of 33.00 feet to a chiseled "X" set in a retaining wall;

Thence, North 89 degrees 09 minutes 24 seconds East a distance of 58.59 feet to an iron pin set on the east line of said lot;

Thence, South 00 degrees 00 minutes 00 seconds East with said east line, a distance of 33.00 feet to the place of beginning containing 1933 square feet according to survey by Chad F. Craig P.S. #8195 for Seiler and Craig Surveying, Inc. on May 21, 2013 but subject to all easements of record.

Bearings are based on survey H-12 on file at the Richland County Tax Map office and are intended to be used for angular determination only.



Chad F. Craig

Chad F. Craig P.S. #8195
Seiler and Craig Surveying, Inc.

NEW SURVEY
OF EXISTING PARCEL
RICHLAND COUNTY
TAX MAP OFFICE

FCR 5-29-13
INITIAL DATE
EE-114