

0' 30' 60' 90'



SCALE: 1" = 30'

NORTH

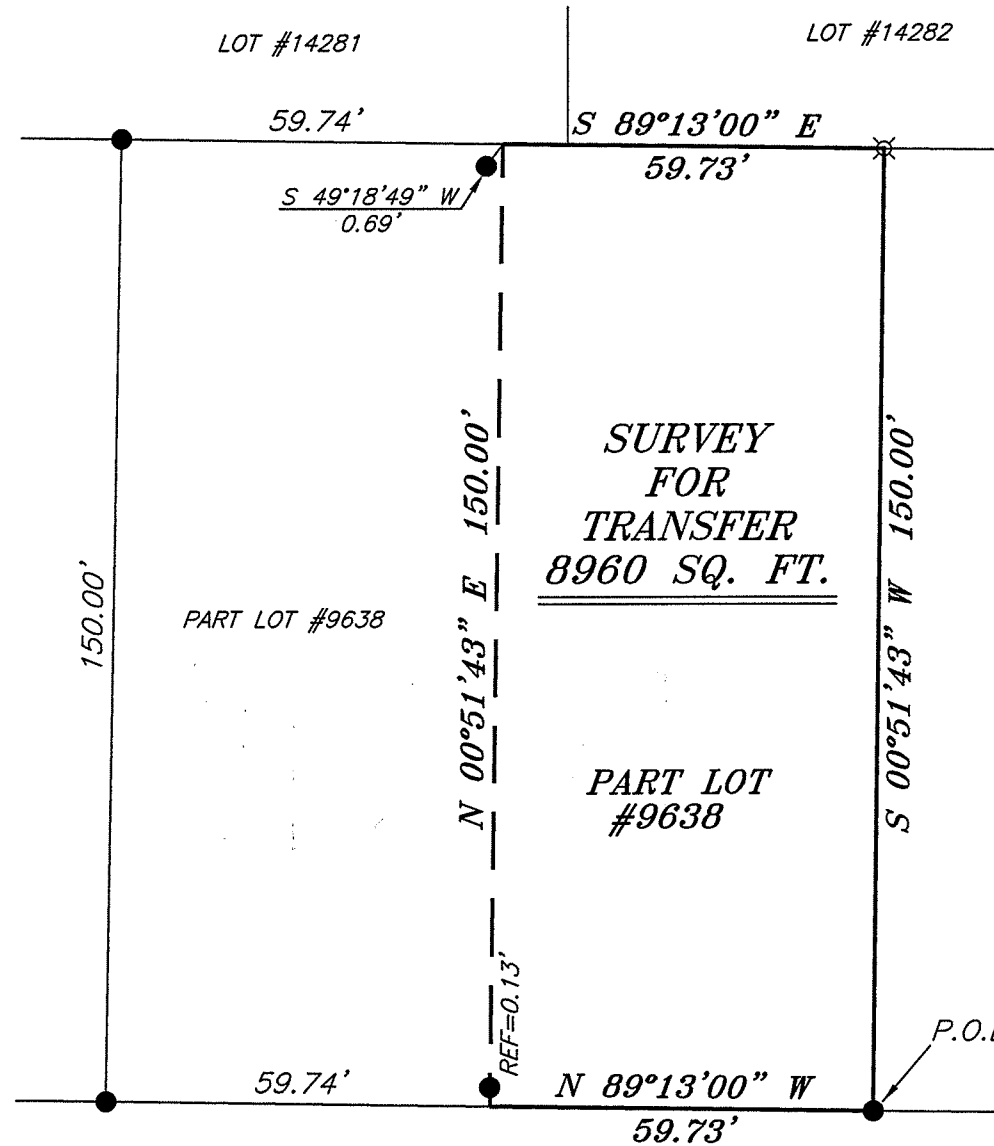


BEARINGS ARE BASED ON SURVEY L-417 ON FILE AT THE RICHLAND COUNTY TAX MAP OFFICE AND ARE INTENDED TO BE USED FOR ANGULAR DETERMINATION ONLY.

LOT #11819

LOT #14281

LOT #14282



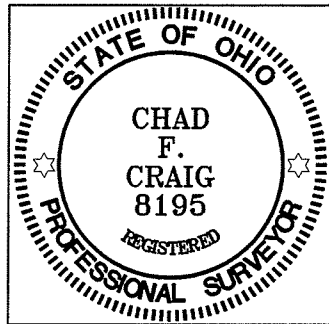
SURVEY FOR TRANSFER
8960 SQ. FT.

PART LOT #9638

PART LOT #9639

LEGEND

- IRON PIN FOUND
- ⊕ 2" MAG NAIL SPIKE SET
- ⊗ 3" SURVEY MARKER SET
- △ RAILROAD SPIKE SET
- ▲ RAILROAD SPIKE FOUND
- ⊗ 5/8" IRON PIN SET WITH CAP STAMPED "CRAIG 8195"



Chad F. Craig

SURVEY BY: CHAD F. CRAIG P.S. #8195
for SEILER & CRAIG SURVEYING INC.
52-1/2 NORTH MAIN STREET
MANSFIELD, OHIO 44902
(419) 525-3644
FAX (419) 525-3696

NEW SURVEY
OF EXISTING PARCEL
RICHLAND COUNTY
TAX MAP OFFICE

EAK 5-22-13
INITIAL DATE
EE-109

MAUMEE AVENUE 50' R/W

SURVEY PLAT FOR
PROPERTY TRANSFER

PART LOT #9638
CITY OF MANSFIELD
RICHLAND COUNTY, OHIO

DATE: MAY 20, 2013

SCALE: 1"=30'

MAUMEE_962

SEILER & CRAIG SURVEYING, INC.

Douglas C. Seiler, PS & Chad F. Craig, PS

52 1/2 North Main Street

Mansfield, Ohio 44902

419-525-3644 Fax: 419-525-3696

www.seilerandcraig.com

SURVEY DESCRIPTION

PART LOT #9638
CITY OF MANSFIELD
RICHLAND COUNTY, OHIO

Situated in the City of Mansfield, County of Richland, State of Ohio and being known as part of Lot #9638 of the consecutively numbered lots in said city, and being more particularly described as follows:

Beginning for the same at an iron pin found and accepted as marking the southeast corner of said lot; Thence, North 89 degrees 13 minutes 00 seconds West with the south line of said lot, a distance of 59.73 feet to a point referenced by an iron pin found on a bearing of North 00 degrees 51 minutes 43 seconds East and at a distance of 0.13 feet;

Thence, North 00 degrees 51 minutes 43 seconds East passing through said iron pin, a distance of 150.00 feet to a point on the north line of said lot and referenced by an iron pin found on a bearing of South 49 degrees 18 minutes 49 seconds West and at a distance of 0.69 feet;

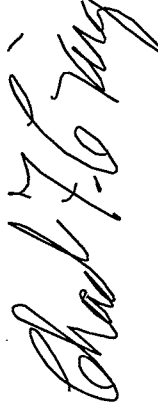
Thence, South 89 degrees 13 minutes 00 seconds East with said north line, a distance of 59.73 feet to an iron pin set on the northeast corner thereof;

Thence, South 00 degrees 51 minutes 43 seconds West with the east line of said lot, a distance of 150.00 feet to the place of beginning containing 8960 square feet according to survey by Chad F. Craig P.S. #8195 for Seiler and Craig Surveying, Inc. on May 20, 2013 but subject to all easements of record.

Bearings are based on survey L-417 on file at the Richland County Tax Map office and are intended to be used for angular determination only.

NEW SURVEY
OF EXISTING PARCEL
RICHLAND COUNTY
TAX MAP OFFICE

EAK 5-22-13
INITIAL DATE
EE-109



Chad F. Craig P.S. #8195
Seiler and Craig Surveying, Inc.