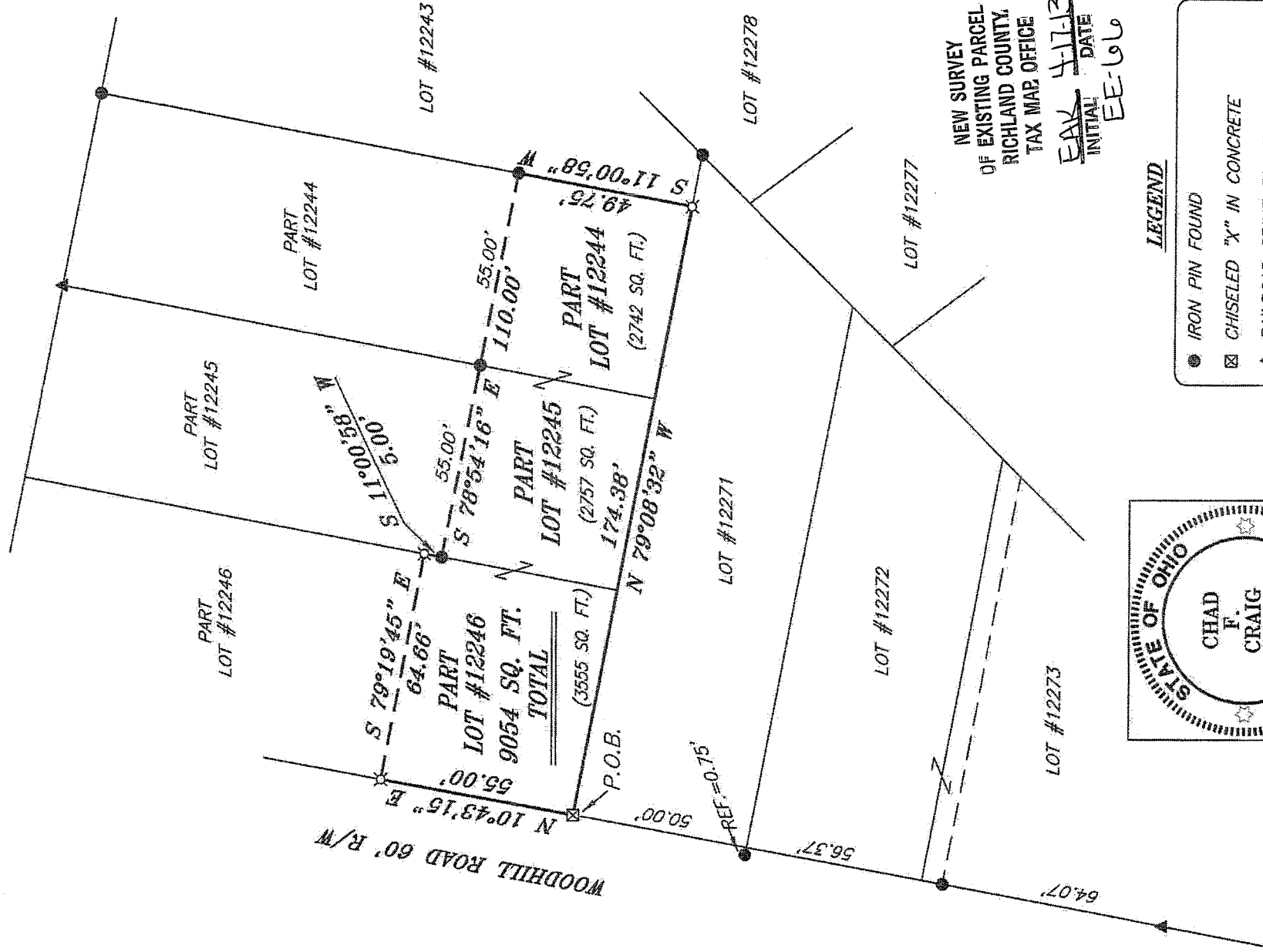


NORTH



BEARINGS ARE BASED ON SURVEY V-24 ON FILE AT THE RICHLAND COUNTY TAX MAP OFFICE AND ARE INTENDED TO BE USED FOR ANGULAR DETERMINATION ONLY

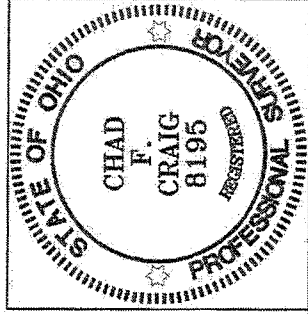


NEW SURVEY
OF EXISTING PARCEL
OF RICHLAND COUNTY,
TAX MAP OFFICE

DATE: 4-17-13
INITIAL: EE
DATE: EE-66

LEGEND

- IRON PIN FOUND
- ⊗ CHISELED "X" IN CONCRETE
- ▲ RAILROAD SPIKE FOUND
- ⊗ 5/8" IRON PIN SET WITH CAP STAMPED "CRAIG 8195"



Chad F. Craig

SURVEY BY: CHAD F. CRAIG P.S. #8195
for SELLER & CRAIG SURVEYING INC.
52-1/2 NORTH MAIN STREET
MANSFIELD, OHIO 44902
(419) 525-3644
FAX (419) 525-3696

SURVEY PLAT FOR
PROPERTY TRANSFER

PT. LOTS #12244, #12245, & #12246
CITY OF MANSFIELD
RICHLAND COUNTY, OHIO

DATE: APRIL 4, 2013 SCALE: 1"=40'
WOODHILL RD_1063

SEILER & CRAIG SURVEYING, INC.

Douglas C. Seiler, PS & Chad F. Craig, PS

52 1/2 North Main Street

Mansfield, Ohio 44902

419-525-3644 Fax: 419-525-3696

www.seilerandcraig.com

SURVEY DESCRIPTION

PART LOTS #12244, #12245, & #12246

CITY OF MANSFIELD

RICHLAND COUNTY, OHIO

Situated in the City of Mansfield, County of Richland, State of Ohio and being known as part of Lots #12244, #12245, & #12246 of the consecutively numbered lots in said city, and being more particularly described as follows:

Beginning for the same at a chiseled "X" set in concrete marking the southwest corner of Lot #12246, Thence, North 10 degrees 43 minutes 15 seconds East with the west line of said lot a distance of 55.00 feet to an iron pin set;

Thence, South 79 degrees 19 minutes 45 seconds East a distance of 64.66 feet to an iron pin set on the east line of said lot;

Thence, South 11 degrees 00 minutes 58 seconds West with said east line a distance of 5.00 feet to an iron pin found;

Thence, South 78 degrees 54 minutes 16 seconds East passing through an iron pin found at a distance of 55.00 feet, a total distance of 110.00 feet to an iron pin found on the east line of Lot #12244;

Thence, South 11 degrees 00 minutes 58 seconds West with the east line of said lot a distance of 49.75 feet to an iron pin set;

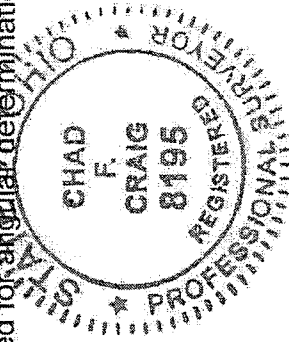
Thence, North 79 degrees 08 minutes 32 seconds West with the south line of said lot and the westerly prolongation thereof a distance of 174.38 feet to the place of beginning containing a total of 9054 square feet, of which 2742 square feet are located in part of Lot #12244, 2757 square feet are located in part of Lot #12245, and 3555 square feet are located in part of Lot #12246, according to survey by Chad F. Craig P.S. #8195 for Seiler and Craig Surveying, Inc. on April 4, 2013 but subject to all easements and right of ways of record.

Bearings are based on survey M-24 on file at the Richland County Tax Map office and are intended to be used for angular determination only.

NEW SURVEY
OF EXISTING PARCEL
RICHLAND COUNTY
TAX MAP OFFICE

INITIAL DATE
EAK 4-17-13

EE-66



Chad F. Craig

Chad F. Craig P.S. #8195
Seiler and Craig Surveying, Inc.