

NORTH

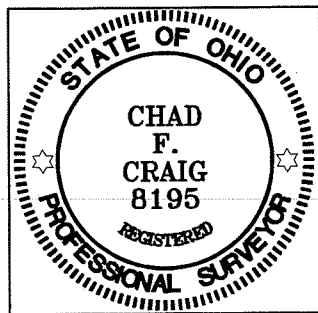
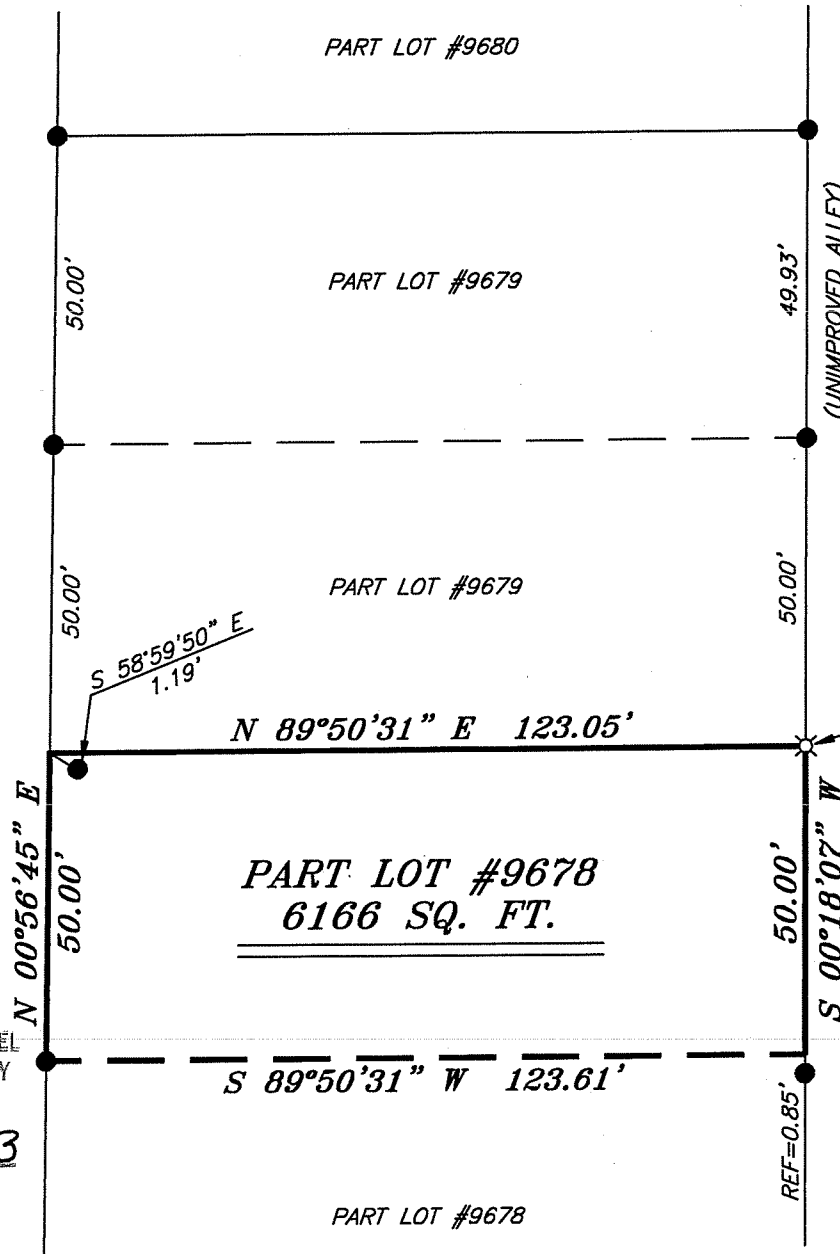


BEARINGS ARE BASED ON SURVEY G-167 ON FILE AT THE RICHLAND COUNTY TAX MAP OFFICE AND ARE INTENDED TO BE USED FOR ANGULAR DETERMINATION ONLY

LEGEND

- IRON PIN FOUND
- ♁ 2" MAG NAIL SPIKE SET
- ⊗ 3" SURVEY MARKER SET
- △ RAILROAD SPIKE SET
- ▲ RAILROAD SPIKE FOUND
- ⊗ 5/8" IRON PIN SET WITH CAP STAMPED "CRAIG 8195"

MARLOW ROAD 40' R/W



NEW SURVEY
OF EXISTING PARCEL
RICHLAND COUNTY
TAX MAP OFFICE
EAK 3-11-13
INITIAL DATE
EE-36

Chad F. Craig

SURVEY BY: CHAD F. CRAIG P.S. #8195
for SEILER & CRAIG SURVEYING INC.
52-1/2 NORTH MAIN STREET
MANSFIELD, OHIO 44902
(419) 525-3644
FAX (419) 525-3696

SURVEY PLAT FOR	
PROPERTY TRANSFER	
PART LOT #9678	
CITY OF MANSFIELD	
RICHLAND COUNTY, OHIO	
DATE: FEBRUARY 28, 2013	SCALE: 1"=30'
MARLOW_RD_203	

SEILER & CRAIG SURVEYING, INC.

Douglas C. Seiler, PS & Chad F. Craig, PS
52 1/2 North Main Street
Mansfield, Ohio 44902
419-525-3644 Fax: 419-525-3696
www.seilerandcraig.com

SURVEY DESCRIPTION

PART LOT #9678
CITY OF MANSFIELD
RICHLAND COUNTY, OHIO

Situated in the City of Mansfield, County of Richland, State of Ohio and being known as part of Lot #9678 of the consecutively numbered lots in said city, and being more particularly described as follows:

Beginning for the same at an iron pin set marking the northeast corner of said lot; Thence, South 00 degrees 18 minutes 07 seconds West with the east line of said lot, a distance of 50.00 feet to a point referenced by an iron pin found on a bearing of South 00 degrees 18 minutes 07 seconds West and at a distance of 0.85 feet;

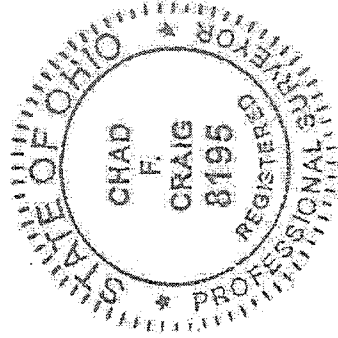
Thence, South 89 degrees 50 minutes 31 seconds West a distance of 123.61 feet to an iron pin found on the west line of said lot;

Thence, North 00 degrees 56 minutes 45 seconds East with said west line, a distance of 50.00 feet to the northwest corner of said lot, referenced by an iron pin found on a bearing of South 58 degrees 59 minutes 50 seconds East and at a distance of 1.19 feet;

Thence, North 89 degrees 50 minutes 31 seconds East with the north line of said lot, a distance of 123.05 feet to the place of beginning containing 6166 square feet according to survey by Chad F. Craig P.S. #8195 for Seiler and Craig Surveying, Inc. on February 28, 2013 but subject to all easements of record.

Bearings are based on survey G-167 on file at the Richland County Tax Map office and are intended to be used for angular determination only.

NEW SURVEY
OF EXISTING PARCEL
RICHLAND COUNTY
TAX MAP OFFICE
EAK 3-11-13
INITIAL DATE
EE-36



Chad F. Craig
Chad F. Craig P.S. #8195
Seiler and Craig Surveying, Inc.