

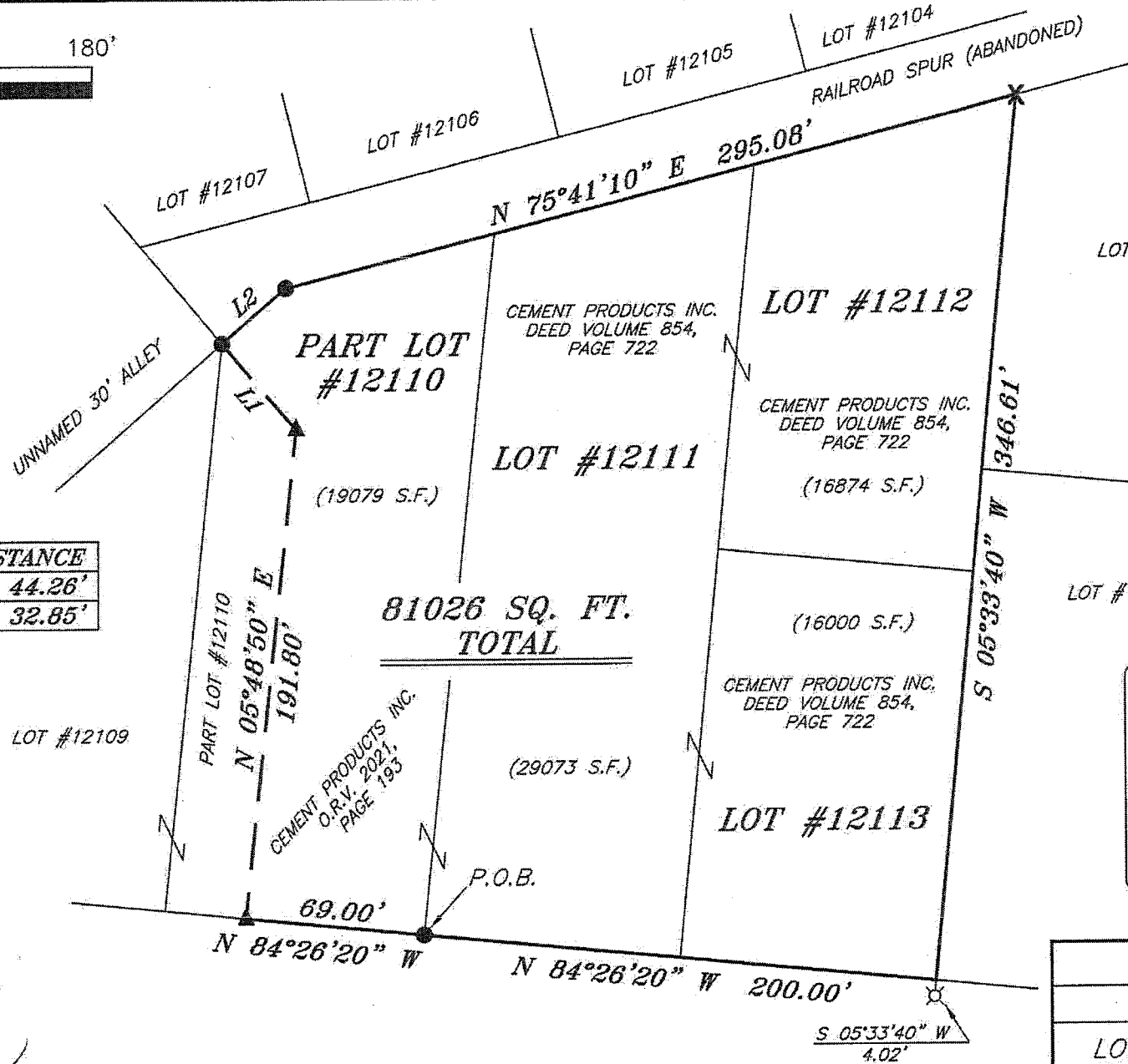
NEW SURVEY
OF EXISTING PARCEL
RICHLAND COUNTY,
TAX MAP OFFICE
EAK 1-5-13
INITIAL DATE
EE-20

LINE	BEARING	DISTANCE
L1	N 40°37'37" W	44.26'
L2	N 49°00'04" E	32.85'



Chad F. Craig

SURVEY BY: CHAD F. CRAIG P.S. #8195
for SEILER & CRAIG SURVEYING INC.
52-1/2 NORTH MAIN STREET
MANSFIELD, OHIO 44902
(419) 525-3644
FAX (419) 525-3696



BEARINGS ARE BASED ON SURVEY BB-277 ON FILE AT THE RICHLAND COUNTY TAX MAP OFFICE AND ARE INTENDED TO BE USED FOR ANGULAR DETERMINATION ONLY

LEGEND

- IRON PIN FOUND
- ✕ CHISELED "X" SET
- ⊗ 3" SURVEY MARKER SET
- △ RAILROAD SPIKE SET
- ▲ RAILROAD SPIKE FOUND
- ⊗ 5/8" IRON PIN SET WITH CAP STAMPED "CRAIG 8195"

SURVEY PLAT FOR CEMENT PRODUCTS INC.	
LOTS #12111, #12112, #12113 AND PART LOT #12110, CITY OF MANSFIELD RICHLAND COUNTY, OHIO	
DATE: JANUARY 21, 2013	SCALE: 1"=60'
CEMENT_PRODUCTS	

PARK AVENUE EAST (S.R. 430) 66' R/W

SEILER & CRAIG SURVEYING, INC.

Douglas C. Seiler, PS & Chad F. Craig, PS
52 1/2 North Main Street
Mansfield, Ohio 44902
419-525-3644 Fax 419-525-3696
www.seilerandcraig.com

SURVEY DESCRIPTION

PART LOT #12110, LOT #12111,
LOT #12112 AND LOT #12113
CITY OF MANSFIELD
RICHLAND COUNTY, OHIO

Situated in the City of Mansfield, County of Richland, State of Ohio and being known as part of Lot #12110, Lot #12111, Lot #12112 and Lot #12113 of the consecutively numbered lots in said city, and being more particularly described as follows:

Beginning for the same at an iron pin found and accepted as marking the southeast corner of Lot #12110, the same being the southwest corner of Lot #12111; Thence, North 84 degrees 26 minutes 20 seconds West with the south line of Lot #12110, a distance of 69.00 feet to a railroad spike found;

Thence, North 05 degrees 48 minutes 50 seconds East a distance of 191.80 feet to a railroad spike found;

Thence, North 40 degrees 37 minutes 37 seconds West a distance of 44.26 feet to an iron pin found and accepted as marking the northwest corner of Lot #12110, the same being the southerly line of an abandoned railroad spur;

Thence, North 49 degrees 00 minutes 04 seconds East with the north line of said lot and said southerly line of railroad spur, a distance of 32.85 feet to an iron pin found;

Thence, North 75 degrees 41 minutes 10 seconds East with the north line of said lot and the easterly prolongation thereof, a distance of 295.08 feet to a chiseled "X" set in concrete on the northeast corner of Lot #12112;

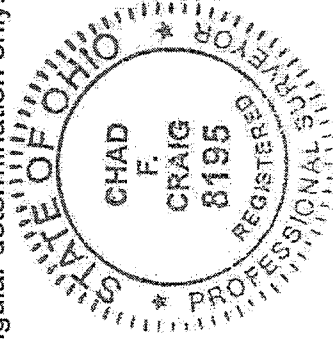
Thence, South 05 degrees 33 minutes 40 seconds West with the east line of Lot #12112 and the southerly prolongation thereof, a distance of 346.61 feet to the southeast corner of Lot #12113, said corner referenced by an iron pin set on a bearing of South 05 degrees 33 minutes 40 seconds West and at a distance of 4.02 feet;

Thence, North 84 degrees 26 minutes 20 seconds West with the south line of Lot #12113 and the westerly prolongation thereof, a distance of 200.00 feet to the place of beginning containing a total of 81,026 square feet, with 19,079 square feet within Part Lot #12110, 29,073 square feet within Lot #12111, 16,874 square feet within Lot #12112 and 16,000 square feet within Lot #12113 according to survey by Chad F. Craig P.S. #8195 for Seiler and Craig Surveying, Inc. on January 21, 2012 but subject to all easements of record.

Bearings are based on survey BB-277 on file at the Richland County Tax Map office and are intended to be used for angular determination only.

NEW SURVEY
OF EXISTING PARCEL
RICHLAND COUNTY
TAX MAP OFFICE

EAK 1-5-13
INITIAL DATE
EE-20



Chad F. Craig P.S. #8195
Seiler and Craig Surveying, Inc.