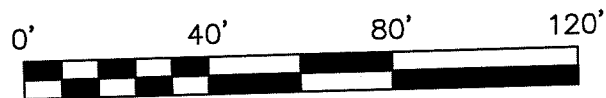


BEARINGS ARE BASED ON SURVEY N-389
ON FILE AT THE RICHLAND COUNTY TAX
MAP OFFICE AND ARE INTENDED TO BE
USED FOR ANGULAR DETERMINATION ONLY.

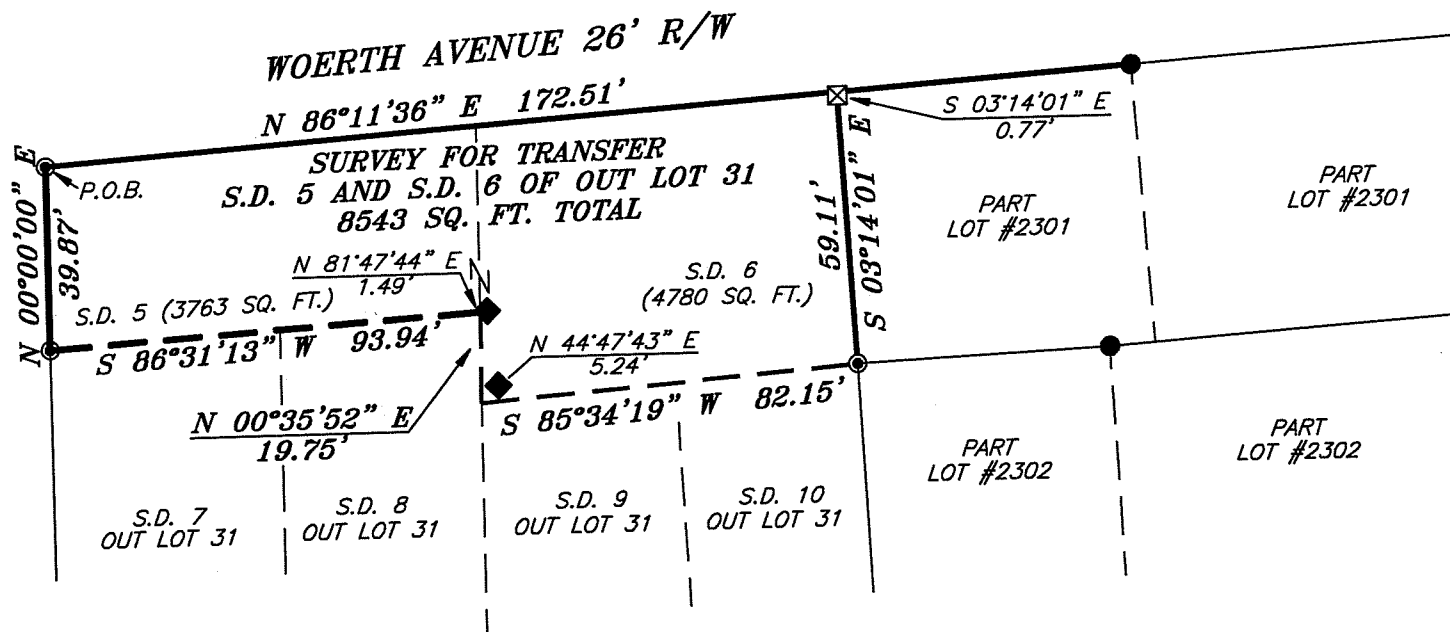


SCALE: 1" = 40'

NOR



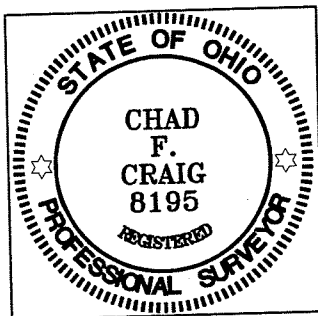
HAMMOND AVENUE 50' R/W



NEW SURVEY
OF EXISTING PARCEL
RICHLAND COUNTY
TAX MAP OFFICE
EAK 1-29-13
INITIAL DATE
EE-16

Chad F. Craig

SURVEY BY: CHAD F. CRAIG P.S. #6869
for SEILER & CRAIG SURVEYING INC.
52-1/2 NORTH MAIN STREET
MANSFIELD, OHIO 44902
(419) 525-3644
FAX (419) 525-3696



LEGEND

- IRON PIN FOUND
- IRON PIPE FOUND
- ⊠ METAL FENCE POST FOUND
- ◆ CORNER FENCE POST FOUND
- ⊗ 5/8" IRON PIN SET WITH CAP STAMPED "CRAIG 8195"

SURVEY PLAT FOR	
PROPERTY TRANSFER	
S.D. 5 AND S.D. 6 OF OUT LOT 31 CITY OF MANSFIELD RICHLAND COUNTY, OHIO	
DATE: JANUARY 16, 2013	SCALE: 1"=40'
HANMMOND_AVE_285	

SEILER & CRAIG SURVEYING, INC.

Douglas C. Seiler, PS & Chad F. Craig, PS

52 1/2 North Main Street

Mansfield, Ohio 44902

419-525-3644 Fax: 419-525-3696

www.seilerandcraig.com

SURVEY DESCRIPTION

S.D. 5 AND S.D. 6 OF OUT LOT 31
CITY OF MANSFIELD
RICHLAND COUNTY, OHIO

Situated in the City of Mansfield, County of Richland, State of Ohio and being known as S.D. 5 and S.D. 6 of Out Lot 31 in said city, and being more particularly described as follows:

Beginning for the same at an iron pipe found and accepted as marking the northwest corner of S.D. 5 of said out lot; Thence, North 86 degrees 11 minutes 36 seconds East with the north line of said out lot, a distance of 172.51 feet to a point referenced by a metal fence post found on a bearing of South 03 degrees 14 minutes 01 second East at a distance of 0.77 feet;

Thence, South 03 degrees 14 minutes 01 second East a distance of 59.11 feet to an iron pipe found;

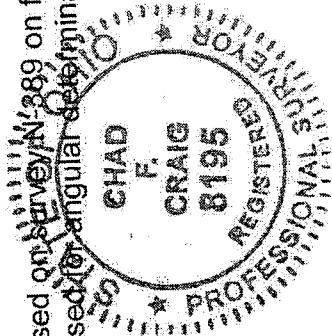
Thence, South 85 degrees 34 minutes 19 seconds West a distance of 82.15 feet to a point referenced by a corner fence post found on a bearing of North 44 degrees 14 minutes 43 seconds East and at a distance of 5.24 feet;

Thence, North 00 degrees 35 minutes 52 seconds East a distance of 19.75 feet to a point referenced by a corner fence post found on a bearing of North 81 degrees 47 minutes 44 seconds East and at a distance of 1.49 feet;

Thence, South 86 degrees 31 minutes 13 seconds West a distance of 93.94 feet to an iron pipe found on the west line of said out lot;

Thence, North 00 degrees 00 minutes 00 seconds East with said west line, a distance of 39.87 feet to the place of beginning containing a total of 8,543 square feet of which 3,763 square feet are located within S.D. 5 and 4,780 square feet are located within S.D. 6 according to survey by Chad F. Craig P.S. #8195 for Seiler and Craig Surveying, Inc. on January 16, 2013 but subject to all easements of record.

Bearings are based on Survey N: 389 on file at the Richland County Tax Map office and are intended to be used for angular determination only.



NEW SURVEY
OF EXISTING PARCEL
RICHLAND COUNTY,
TAX MAP OFFICE

EAK INITIAL
1-29-13 DATE
EE-16

A handwritten signature in black ink that reads "Chad F. Craig".

Chad F. Craig P.S. #8195
Seiler and Craig Surveying, Inc.