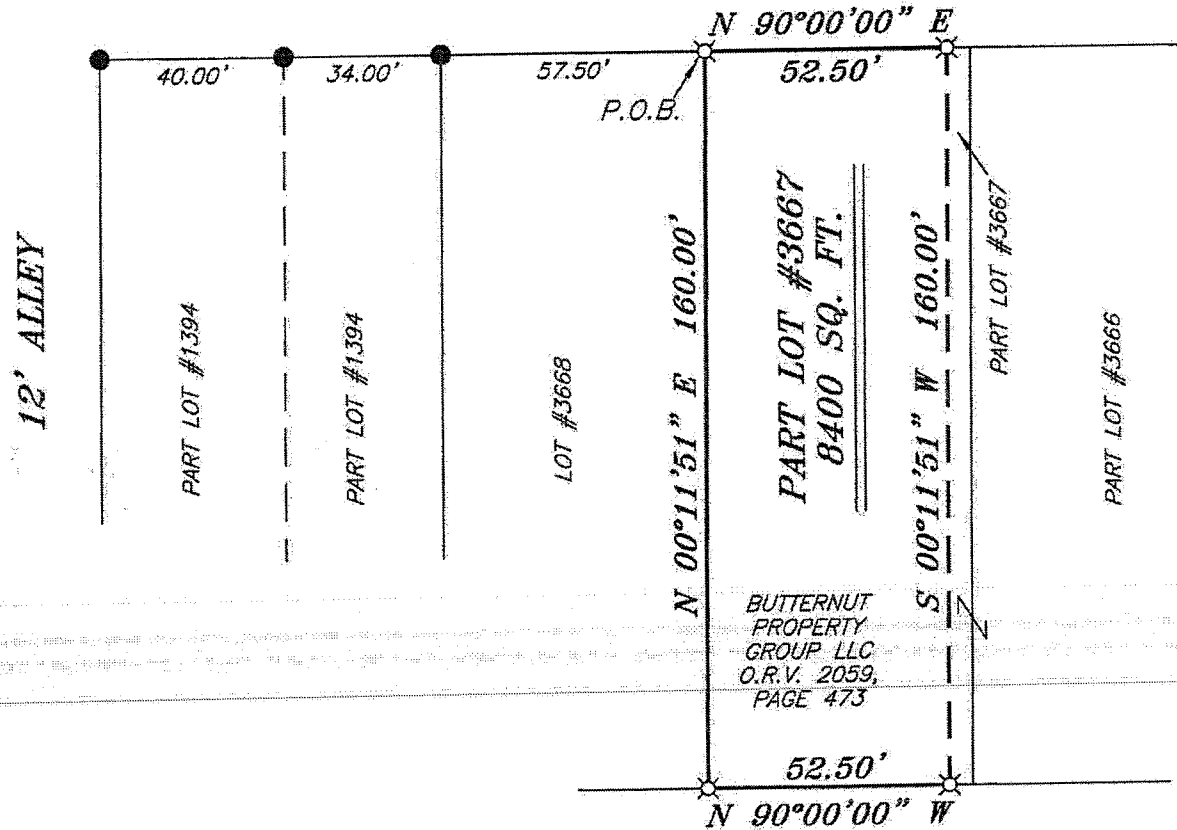


WEST FIFTH STREET 60' R/W

NORTH



BEARINGS ARE BASED ON SURVEY V-18 ON FILE AT THE RICHLAND COUNTY TAX MAP OFFICE AND ARE INTENDED TO BE USED FOR ANGULAR DETERMINATION ONLY

LEGEND

- IRON PIN FOUND
- ⊗ 2" MAG NAIL SPIKE SET
- ⊗ 3" SURVEY MARKER SET
- △ RAILROAD SPIKE SET
- ▲ RAILROAD SPIKE FOUND
- ⊗ 5/8" IRON PIN SET WITH CAP STAMPED "CRAIG 8195"



BUTTERNUT
PROPERTY
GROUP LLC
O.R.V. 2059,
PAGE 473

ALLEY

NEW SURVEY
OF EXISTING PARCEL
RICHLAND COUNTY,
TAX MAP OFFICE

EAK 12-17-12
INITIAL DATE

dd-305

SURVEY BY: CHAD F. CRAIG P.S. #8195
for SEILER & CRAIG SURVEYING INC.
52-1/2 NORTH MAIN STREET
MANSFIELD, OHIO 44902
(419) 525-3644
FAX (419) 525-3696

SURVEY PLAT FOR PROPERTY TRANSFER	
PART LOT #3667 CITY OF MANSFIELD RICHLAND COUNTY, OHIO	
DATE: DECEMBER 11, 2012	SCALE: 1"=40'
FIFTH_ST_249	

SEILER & CRAIG SURVEYING, INC.

Douglas C. Seiler, PS & Chad F. Craig, PS
52 ½ North Main Street
Mansfield, Ohio 44902
419-525-3644 Fax: 419-525-3696
www.seilerandcraig.com

SURVEY DESCRIPTION

PART LOT #3667
CITY OF MANSFIELD,
RICHLAND COUNTY, OHIO

Situated in the City of Mansfield, County of Richland, State of Ohio and being known as Part Lot #3667 of the consecutively numbered lots in said city, and being more particularly described as follows:

Beginning for the same at an iron pin set marking the northwest corner of Lot #3667, Thence, North 90 degrees 00 minutes 00 seconds East with the north line of said lot a distance of 52.50 feet to an iron pin set;

Thence, South 00 degrees 11 minutes 51 seconds West a distance of 160.00 feet to an iron pin set on the south line of said lot;

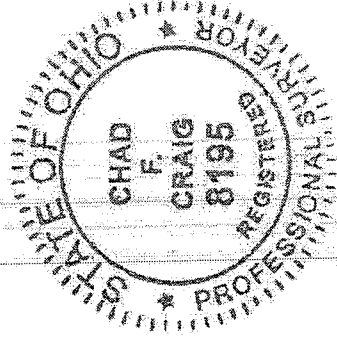
Thence, North 90 degrees 00 minutes 00 seconds West with the south line of said lot a distance of 52.50 feet to an iron pin set marking the southwest corner thereof;

Thence, North 00 degrees 11 minutes 51 seconds East with the west line of said lot a distance of 160.00 feet to the place of beginning containing a total of 8400 square feet, according to survey by Chad F. Craig P.S. #8195 for Seiler and Craig Surveying, Inc. on December 11, 2012, but subject to all easements and right of ways of record.

Iron pins set are 5/8" rods with caps stamped "CRAIG 8195".

Bearings are based on survey V-18 on file at the Richland County Tax Map Office and are intended to be used for angular determination only.

NEW SURVEY
OF EXISTING PARCEL
RICHLAND COUNTY
TAX MAP OFFICE
EAV INITIAL
12-17-12 DATE
dd-305



Chad F. Craig
Chad F. Craig P.S. #8195
Seiler and Craig Surveying, Inc.