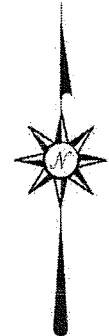
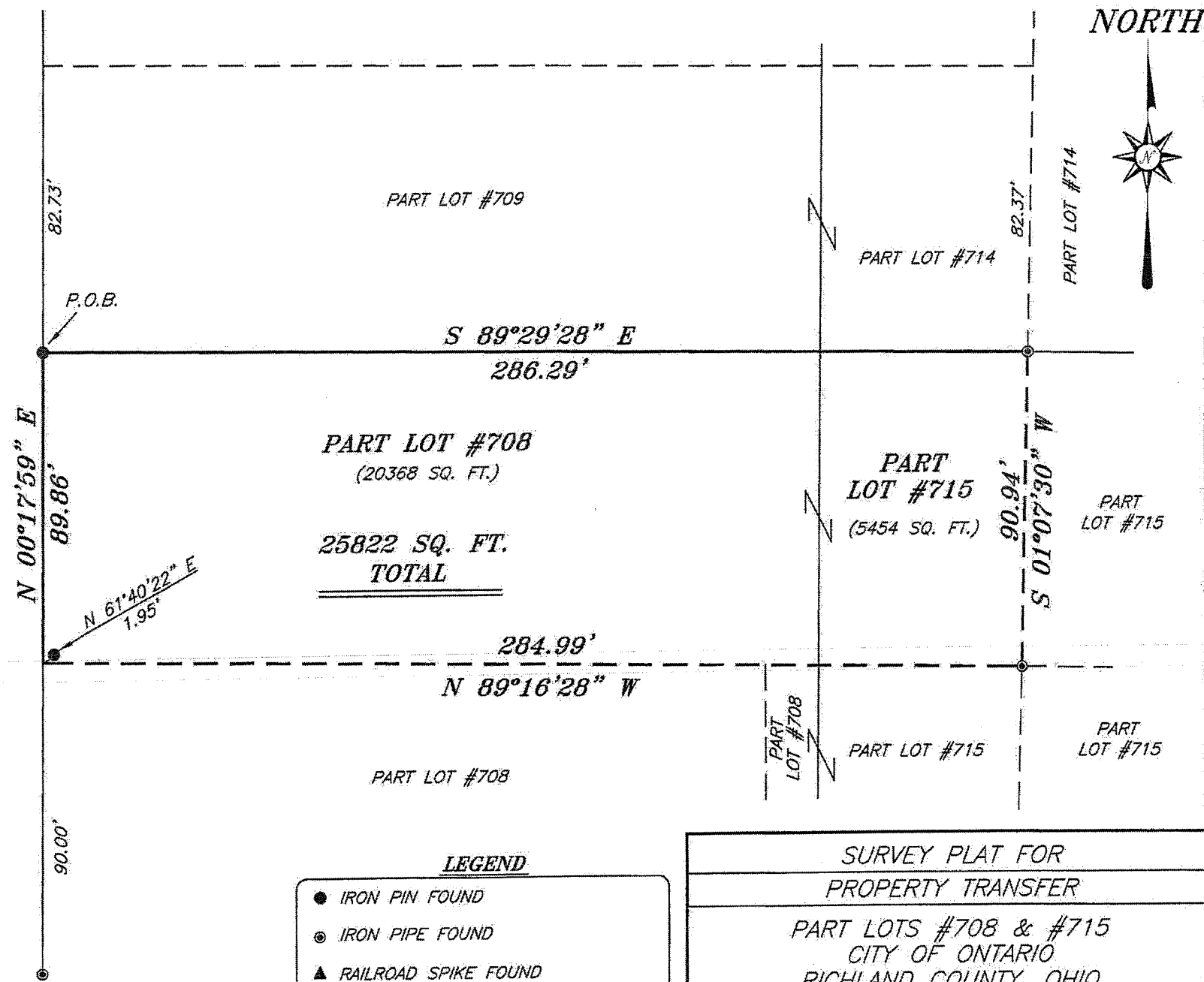


BEARINGS ARE BASED ON SURVEY Z-89 ON FILE AT THE RICHLAND COUNTY TAX MAP OFFICE AND ARE INTENDED TO BE USED FOR ANGULAR DETERMINATION ONLY

NORTH



LYNN ROAD 50' R/W



NEW SURVEY
OF EXISTING PARCEL
RICHLAND COUNTY
TAX MAP OFFICE
EAK 12-17-12
INITIAL DATE
dd-303



Chad F. Craig
SURVEY BY: CHAD F. CRAIG P.S. #8195
for SEILER & CRAIG SURVEYING INC.
52-1/2 NORTH MAIN STREET
MANSFIELD, OHIO 44902
(419) 525-3644
FAX (419) 525-3696

- LEGEND**
- IRON PIN FOUND
 - ⊙ IRON PIPE FOUND
 - ▲ RAILROAD SPIKE FOUND
 - ⊠ 5/8" IRON PIN SET WITH CAP STAMPED "CRAIG 8195"

SURVEY PLAT FOR PROPERTY TRANSFER	
PART LOTS #708 & #715 CITY OF ONTARIO RICHLAND COUNTY, OHIO	
DATE: DECEMBER 7, 2012	SCALE: 1"=40'
LYNN_DRIVE_81-83	

SEILER & CRAIG SURVEYING, INC.

Douglas C. Seiler, PS & Chad F. Craig, PS
52 1/2 North Main Street
Mansfield, Ohio 44902
419-525-3644 Fax: 419-525-3696
www.seilerandcraig.com

SURVEY DESCRIPTION

PART LOTS #708 & #715
CITY OF ONTARIO
RICHLAND COUNTY, OHIO

Situated in the City of Ontario, County of Richland, State of Ohio and being known as part of Lots #708 & #715 of the consecutively numbered lots in said city, and being more particularly described as follows:

Beginning for the same at an iron pin found and accepted as marking the northwest corner of Lot #708, Thence, South 89 degrees 29 minutes 28 seconds East with the north line of said lot and the easterly prolongation thereof a distance of 286.29 feet to a iron pipe found on the north line of Lot #715;

Thence, South 01 degree 07 minutes 30 seconds West a distance of 90.94 feet to an iron pipe found;

Thence, North 89 degrees 16 minutes 28 seconds West a distance of 284.99 feet to a point on the west line of Lot #708, referenced by an iron pin found on a bearing of North 61 degrees 40 minutes 22 seconds East and at a distance of 1.95 feet;

Thence, North 00 degrees 17 minutes 59 seconds East with the west line of said lot a distance of 89.86 feet to the place of beginning containing a total of 25822 square feet, of which 20368 square feet are located in Part Lot #708 and 5454 square feet are located in Part Lot #715 according to survey by Chad F. Craig P.S. #8195 for Seiler and Craig Surveying, Inc. on December 7, 2012 but subject to all easements of record.

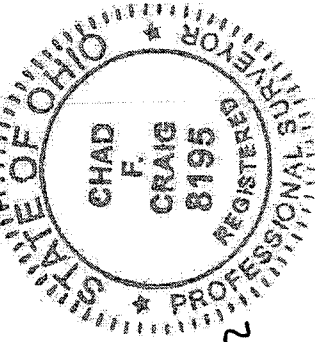
Iron pins set are 5/8" rods with caps stamped "CRAIG 8195".

Bearings are based on survey Z-89 on file at the Richland County Tax Map Office and are intended to be used for angular determination only.

NEW SURVEY
OF EXISTING PARCEL
RICHLAND COUNTY
TAX MAP OFFICE

EAK 12-17-12
INITIAL DATE

dd-303



Chad F. Craig P.S. #8195
Seiler and Craig Surveying, Inc.