

NORTH



NOBLE ROAD (C.H. 81)

P.O.B. PARCEL "A"

THE NORTH LINE OF THE NE QTR. SEC. 7

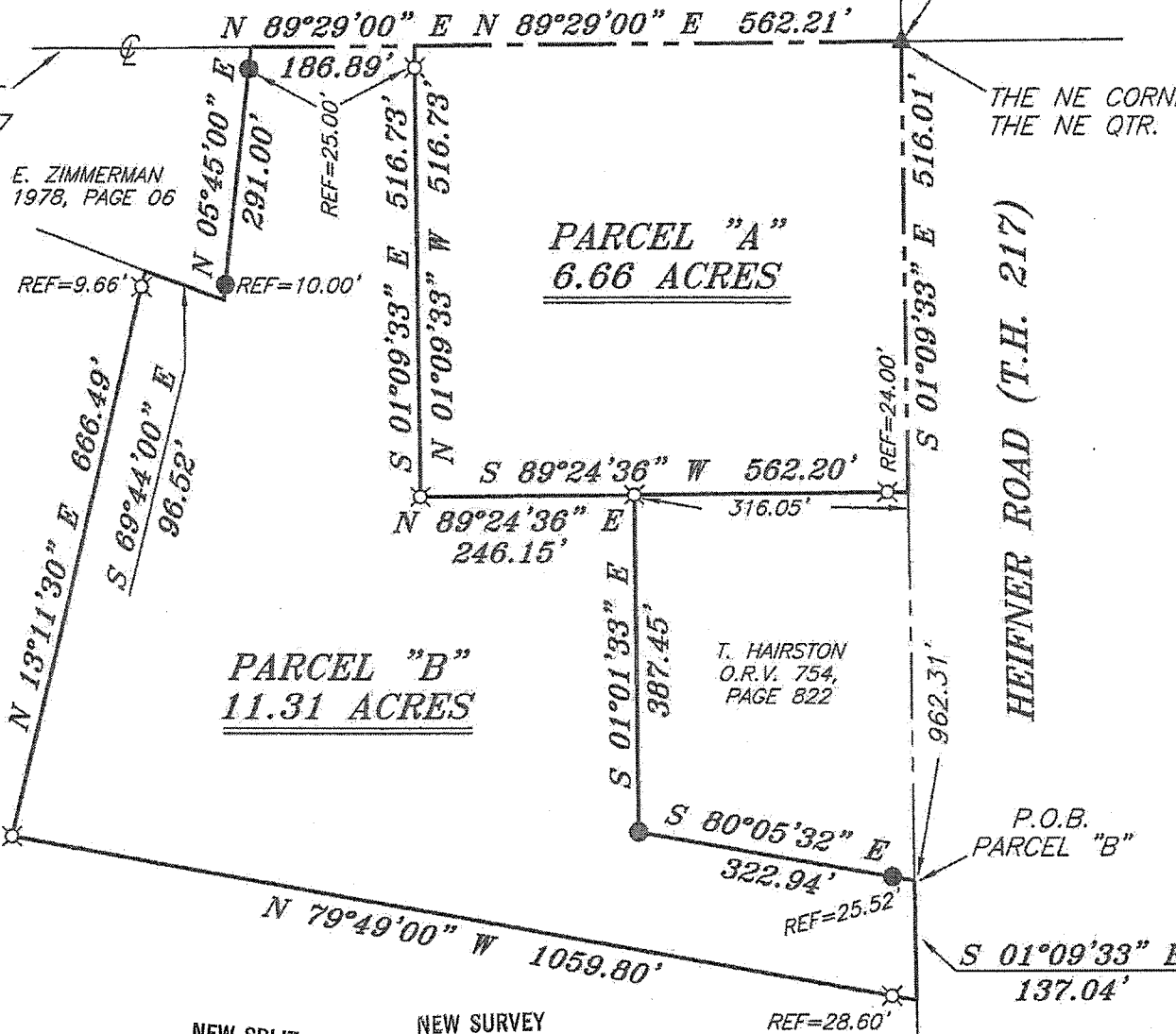
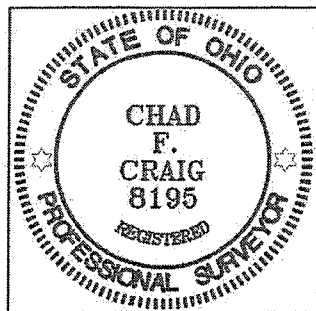
THE NE CORNER OF THE NE QTR. SEC. 7

F. & E. ZIMMERMAN
O.R.V. 1978, PAGE 06

PARCEL "A"
6.66 ACRES

BEARINGS ARE BASED ON SURVEY BB-97 ON FILE AT THE RICHLAND COUNTY TAX MAP OFFICE AND ARE INTENDED TO BE USED FOR ANGULAR DETERMINATION ONLY.

C. A. BEVIER TRUSTEE
O.R.V. 65, PAGE 692



LEGEND

- IRON PIN FOUND
- ⊗ 2" MAG NAIL SPIKE SET
- ⊗ 3" SURVEY MARKER SET
- △ RAILROAD SPIKE SET
- ▲ RAILROAD SPIKE FOUND
- ⊗ 5/8" IRON PIN SET WITH CAP STAMPED "CRAIG 8195"

SURVEY PLAT FOR PROPERTY TRANSFER	
PART NE QTR. SEC. 7, T-23, R-18 BLOOMINGGROVE TOWNSHIP RICHLAND COUNTY, OHIO	
DATE: OCTOBER 1, 2012	SCALE: 1"=200'
NOBLE_RD_1101	

SURVEY BY: *Chad F. Craig*
CHAD F. CRAIG P.S. #8195
for SEILER & CRAIG SURVEYING INC.
52-1/2 NORTH MAIN STREET
MANSFIELD, OHIO 44902
(419) 525-3644
FAX (419) 525-3696

NEW SPLIT
RICHLAND COUNTY
TAX MAP OFFICE
EAK 10-24-12
INITIAL DATE
dd-258

NEW SURVEY
OF EXISTING PARCEL
RICHLAND COUNTY.
TAX MAP OFFICE
EAK 10-24-12
INITIAL DATE
dd-258

THE EAST LINE OF THE NE QTR. SEC. 7
ZONING APPROVAL ON LEGAL "A"

SEILER & CRAIG SURVEYING, INC.

Douglas C. Seiler, PS & Chad F. Craig, PS
52 1/2 North Main Street
Mansfield, Ohio 44902
419-525-3644 Fax 419-525-3696
www.seilerandcraig.com

**SURVEY DESCRIPTION
PARCEL "A"**

**PART OF THE NE QUARTER OF SECTION 7
BLOOMINGGROVE TOWNSHIP
RICHLAND COUNTY, OHIO**

Situated in the Township of Bloominggrove, County of Richland, State of Ohio and being a part of the Northeast Quarter of Section 7, of Township 23 North, Range 18 West, and being more particularly described as follows:

Beginning for the same at a railroad spike found and accepted as marking the northeast corner of said quarter, said spike also marking a point in the centerline of Noble Road (C.H. 81) and also marking a point in Heifner Road (T.H. 217), Thence, South 01 degree 09 minutes 33 seconds East with the east line of said quarter and in Heifner Road a distance of 516.01 feet to a point referenced by an iron pin set on a bearing of South 89 degrees 24 minutes 36 seconds West and at a distance of 24.00 feet, said point marking the northeast corner of a parcel currently owned by T. Hairston (O.R.V. 754, Page 822);

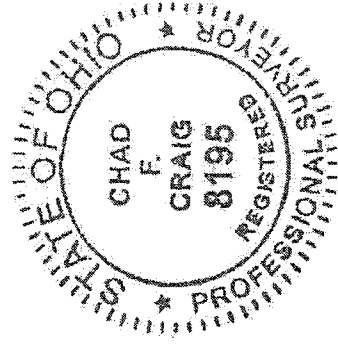
Thence, South 89 degrees 24 minutes 36 seconds West with the north line of said Hairston parcel and the westerly prolongation thereof, passing through said iron pin set, and passing through an iron pin set at a distance of 316.05 feet, a total distance of 562.20 feet to an iron pin set;

Thence, North 01 degree 09 minutes 33 seconds West passing through an iron pin set for reference at a distance of 491.73 feet, a total distance of 516.73 feet to a point on the north line of said quarter, the same as being the centerline of Noble Road;

Thence, North 89 degrees 29 minutes 00 seconds East with said north line and said centerline a distance of 562.21 feet to the place of beginning, containing 6.66 acres according to survey by Chad F. Craig P.S. #8195 for Seiler & Craig Surveying, Inc. on October 1, 2012, but subject to all easements of record.

Iron pins set are 5/8" rods with caps stamped "CRAIG 8195".

Bearings are based on survey BB-97 on file at the Richland County Tax Map office and are intended to be used for angular determination only.



NEW SPLIT
RICHLAND COUNTY
TAX MAP OFFICE

FILED 10-24-12
INITIAL DATE

dd-258

Handwritten signature of Chad F. Craig in black ink.

Chad F. Craig P.S.#8195
for Seiler & Craig Surveying, Inc.

Handwritten signature of Jim Sammons in black ink.

SEILER & CRAIG SURVEYING, INC.

Douglas C. Seiler, PS & Chad F. Craig, PS

52 ½ North Main Street

Mansfield, Ohio 44902

419-525-3644 Fax: 419-525-3696

www.seilerandcraig.com

**SURVEY DESCRIPTION
PARCEL "B"**

**PART OF THE NE QUARTER OF SECTION 7
BLOOMINGGROVE TOWNSHIP
RICHLAND COUNTY, OHIO**

Situated in the Township of Bloominggrove, County of Richland, State of Ohio and being a part of the Northeast Quarter of Section 7, of Township 23 North, Range 18 West, and being more particularly described as follows:

Commencing at a railroad spike found and accepted as marking the northeast corner of said quarter, said spike also marking a point in the centerline of Noble Road (C.H. 81) and also marking a point in Heifner Road (T.H. 217), Thence, South 01 degree 09 minutes 33 seconds East with the east line of said quarter and in Heifner Road a distance of 962.31 feet to a point referenced by an iron pin found on a bearing of North 80 degrees 05 minutes 32 seconds West and at a distance of 25.52 feet; said point marking the southeast corner of a parcel currently owned by T. Hairston (O.R.V. 754, Page 822) and being the place of beginning of the parcel herein described;

Thence, continuing South 01 degree 09 minutes 33 seconds East with said east line and with said road a distance of 137.04 feet to a point referenced by an iron pin set on a bearing of North 79 degrees 49 minutes 00 seconds West and at a distance of 28.60 feet, said point marking an interior corner of a parcel currently owned by C. A. Bevier Trustee (O.R.V. 65, Page 692);

Thence, with a line common to said Bevier parcel the following two (2) courses and distances:

North 79 degrees 49 minutes 00 seconds West passing through said iron pin set, a total distance of 1059.80 feet to an iron pin set;

North 13 degrees 11 minutes 30 seconds East passing through an iron pin set at a distance of 656.83 feet, a total distance of 666.49 feet to a point on the south line of a parcel currently owned by F. & E. Zimmerman (O.R.V. 1978, Page 06);

Thence, South 69 degrees 44 minutes 00 seconds East a distance of 96.52 feet to a point referenced by an iron pin found on a bearing of North 05 degrees 45 minutes 00 seconds East and at a distance of 10.00 feet, said point marking the southeast corner of said Zimmerman parcel;

Thence, North 05 degrees 45 minutes 00 seconds East with the east line of said parcel, passing through said iron pin found, and passing through an iron pin found for reference at a distance of 266.00 feet, a total distance of 291.00 feet to a point on the north line of said quarter, the same as being the centerline of Noble Road;

Thence, North 89 degrees 29 minutes 00 East with said north line and said centerline a distance of 186.89 feet to a point referenced by an iron pin set on a bearing of South 01 degree 09 minutes 33 seconds East and at a distance of 25.00 feet;

Thence, South 01 degree 09 minutes 33 seconds East passing through said iron pin set, a total distance of 516.73 feet to an iron pin set;

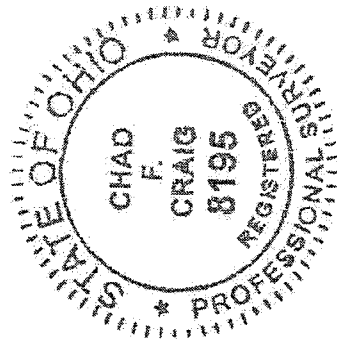
Thence, North 89 degrees 24 minutes 36 seconds East a distance of 246.15 feet to an iron pin set marking the northwest corner of said Hairston parcel;

Thence, South 01 degree 01 minute 33 seconds East with the west line of said Hairston parcel a distance of 387.45 feet to an iron pin found;

Thence, South 80 degrees 05 minutes 32 seconds East with the south line of said Hairston parcel and passing through an iron pin found for reference at a distance of 297.42 feet, a total distance of 322.94 feet to the place of beginning, containing 11.31 acres according to survey by Chad F. Craig P.S. #8195 for Seiler & Craig Surveying, Inc. on October 1, 2012, but subject to all easements of record.

Iron pins set are 5/8" rods with caps stamped "CRAIG 8195".

Bearings are based on survey BB-97 on file at the Richland County Tax Map office and are intended to be used for angular determination only



NEW SURVEY
OF EXISTING PARCEL
RICHLAND COUNTY
TAX MAP OFFICE

INITIAL EF DATE 10-24-12

dd-258

ZONING APPROVAL
ON LEGAL "A"

Chad F. Craig P.S.#8195
for Seiler & Craig Surveying, Inc.