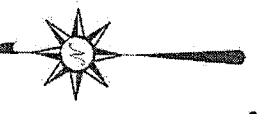
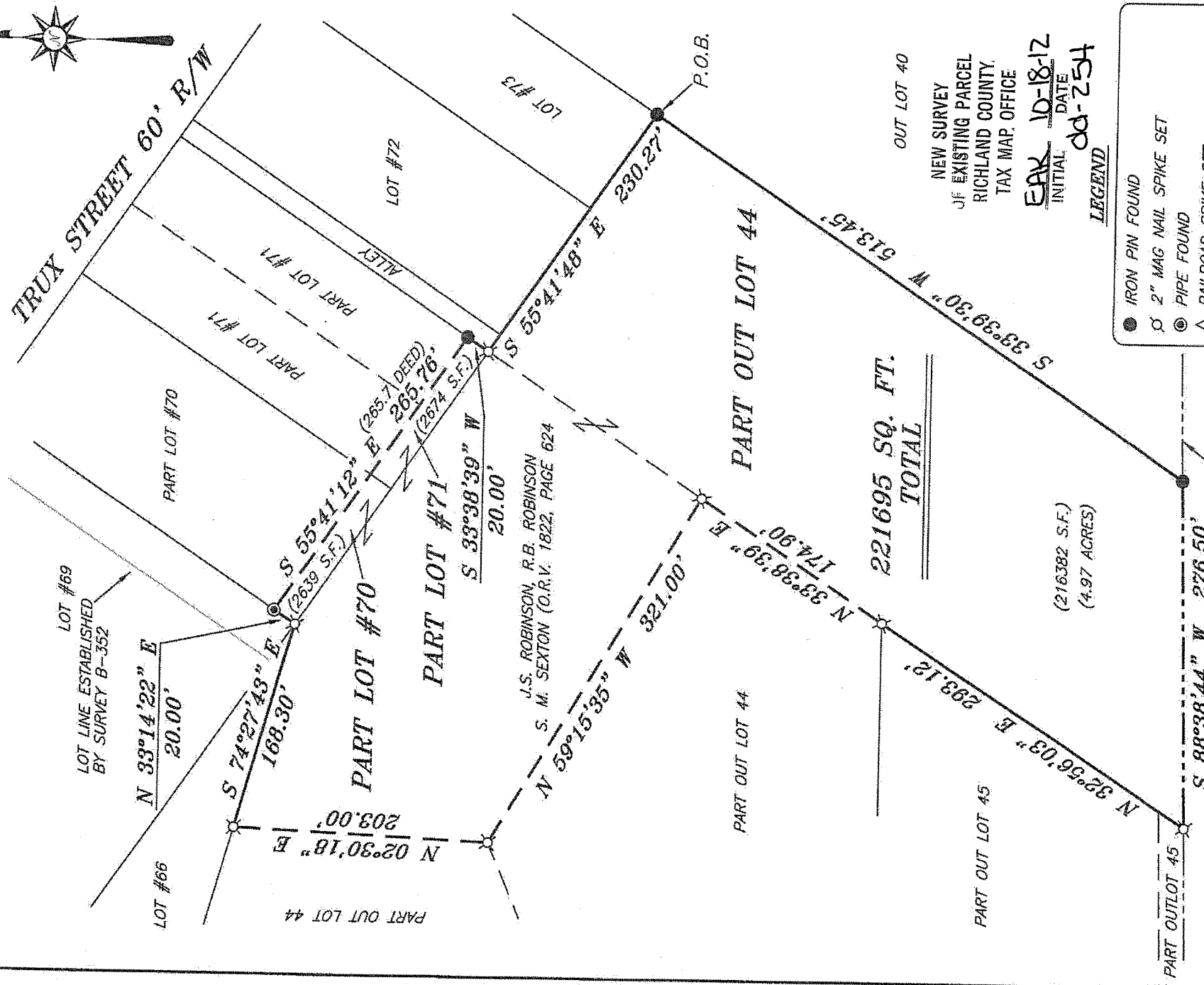


NORTH



BEARINGS ARE BASED ON SURVEY F-2-407 ON FILE AT THE RICHLAND COUNTY TAX MAP OFFICE AND ARE INTENDED TO BE USED FOR ANGULAR DETERMINATION ONLY



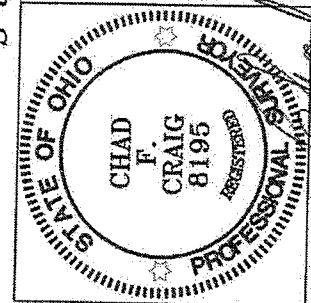
221695 SQ. FT.  
TOTAL

(216382 S.F.)  
(4.97 ACRES)

- LEGEND
- IRON PIN FOUND
  - ⊗ 2" MAG NAIL SPIKE SET
  - ⊙ PIPE FOUND
  - △ RAILROAD SPIKE SET
  - ▲ RAILROAD SPIKE FOUND
  - ⊗ 5/8" IRON PIN SET WITH CAP STAMPED "CRAIG 8195"

NEW SURVEY OF EXISTING PARCEL OF RICHLAND COUNTY, TAX MAP OFFICE

DATE 10-18-12  
INITIAL dd-254



*Chad F. Craig*

SURVEY BY: CHAD F. CRAIG P.S. #8195  
for SELLER & CRAIG SURVEYING INC.  
52-1/2 NORTH MAIN STREET  
MANSFIELD, OHIO 44902  
(419) 525-3644  
FAX (419) 525-3696

SURVEY PLAT FOR
PROPERTY TRANSFER
PART LOTS #70, #71 & PART OUT LOT 44 VILLAGE OF PLYMOUTH RICHLAND COUNTY, OHIO
DATE: OCTOBER 15, 2012 SCALE: 1"=100'
TRUX_ST_146

**SEILER & CRAIG SURVEYING, INC.**

*Douglas C. Seiler, PS & Chad F. Craig, PS*

*52 1/2 North Main Street*

*Mansfield, Ohio 44902*

*419-525-3644 Fax: 419-525-3696*

*www.seilerandcraig.com*

**SURVEY DESCRIPTION**

PART LOT #70, PART LOT #71,  
AND PART OUT LOT 44  
VILLAGE OF PLYMOUTH  
RICHLAND COUNTY, OHIO

Situated in the Village of Plymouth, County of Richland, State of Ohio and being known as part of Lot #70, Part of Lot 71, and part of Out Lot 44 of the consecutively numbered lots in said village, and being more particularly described as follows:

Beginning for the same at an iron pin found and accepted as marking the northeast corner of Out Lot 44 in said village; Thence, South 33 degrees 39 minutes 30 seconds West with the east line of said out lot, a distance of 513.45 feet to an iron pin found on the southeast corner thereof;

Thence, South 88 degrees 38 minutes 44 seconds West with the south line of said out lot, a distance of 276.50 feet to an iron pin set on the southeast corner of Out Lot 45;

Thence, North 32 degrees 56 minutes 03 seconds East with the east line of Out Lot 45, a distance of 293.12 feet to an iron pin set on the northeast corner thereof, the same being an interior corner of said Out Lot 44;

Thence, North 33 degrees 38 minutes 39 seconds East a distance of 174.90 feet to an iron pin set;

Thence, North 59 degrees 15 minutes 35 seconds West a distance of 321.00 feet to an iron pin set;

Thence, North 02 degrees 30 minutes 18 seconds East a distance of 203.00 feet to an iron pin set on the south line of Lot #66 in said village;

Thence, South 74 degrees 27 minutes 43 seconds East with said south line, a distance of 168.30 feet to an iron pin set on the southeast corner thereof, the same being the southeast corner of Lot #69 (dedeed);

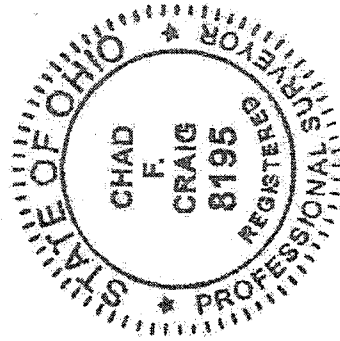
Thence, North 33 degrees 14 minutes 22 seconds East with east line of said lot, a distance of 20.00 feet to a pipe found;

Thence, South 55 degrees 41 minutes 12 seconds East a distance of 265.76 feet to an iron pin found on the east line of Lot 71 in said village;

Thence, South 33 degrees 38 minutes 29 seconds West with said east line, a distance of 20.00 feet to an iron pin set on the southeast corner thereof, the same being a point on the north line of said Out Lot 44;

Thence, South 55 degrees 41 minutes 48 seconds East with said north line, a distance of 230.27 feet to the place of beginning containing 221,695 square feet, of which 2,639 square feet are located within part of Lot #70, 2,674 square feet are located within part of Lot #71 and 216,382 square feet (4.97 acres) are located within part of Out Lot 44 according to survey by Chad F. Craig P.S. #8195 for Seiler and Craig Surveying, Inc. on , October 15, 2012 but subject to all easements of record.

Bearings are based on survey F-2-407 on file at the Richland County Tax Map office and are intended to be used for angular determination only.



*Chad F. Craig*

Chad F. Craig P.S. #8195  
Seiler and Craig Surveying, Inc.

NEW SURVEY  
OF EXISTING PARCEL  
RICHLAND COUNTY  
TAX MAP OFFICE  
EAK INITIAL 10-18-12 DATE  
dd-254