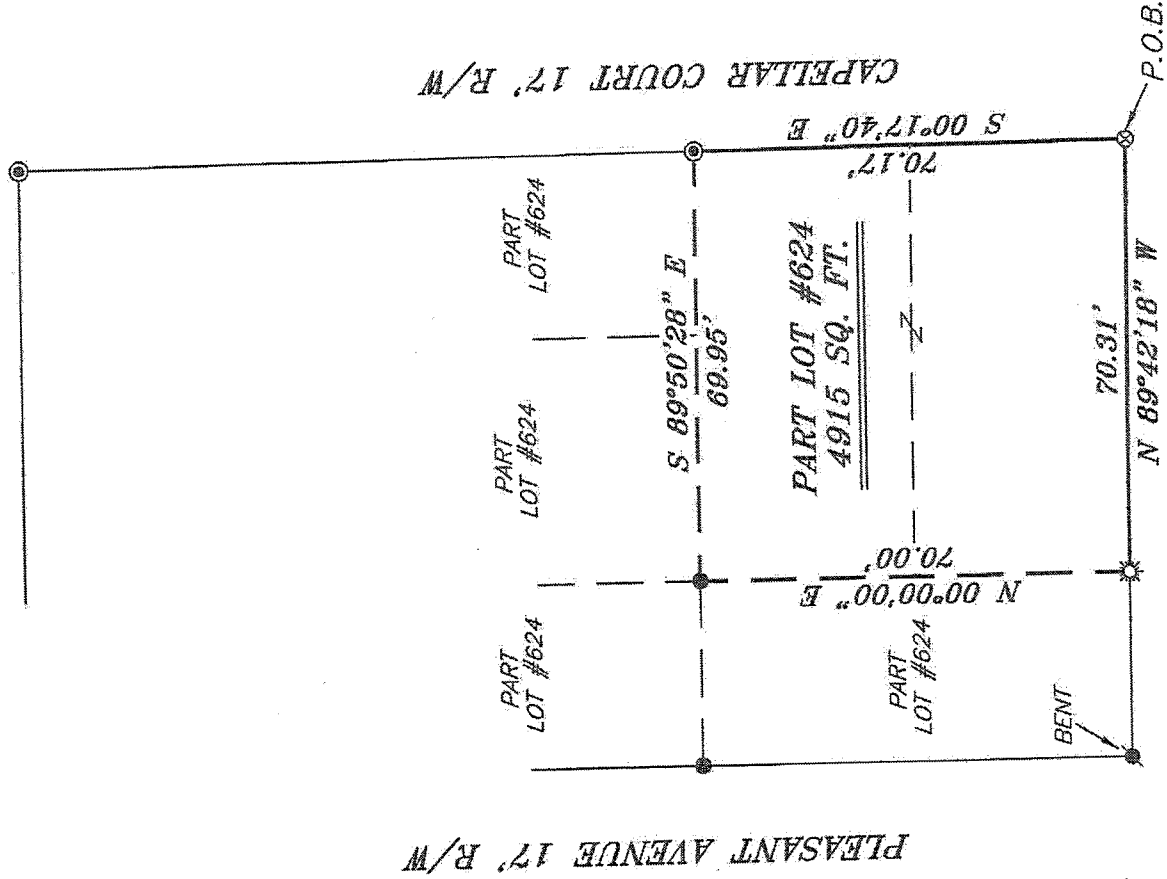


NORTH



SCALE: 1" = 30'

WEST FOURTH STREET 60' R/W

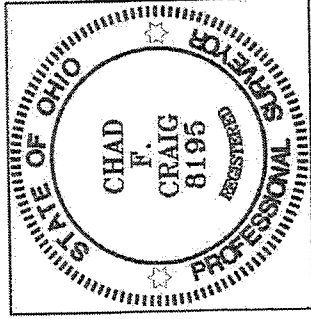


NEW SURVEY
OF EXISTING PARCEL
RICHLAND COUNTY
TAX MAP OFFICE

EAK 8-21-12
INITIAL DATE
dd-218

WEST DICKSON AVENUE 20' R/W

BEARINGS ARE BASED ON SURVEY C-165 ON FILE AT THE
RICHLAND COUNTY TAX MAP OFFICE AND ARE INTENDED
TO BE USED FOR ANGULAR DETERMINATION ONLY



LEGEND

- IRON PIN FOUND
- ⊗ 3 INCH SURVEY MARKER SET
- ⊗ MAG NAIL SPIKE FOUND
- ⊗ IRON PIPE FOUND
- ⊗ DRILL HOLE FOUND
- ⊗ 5/8" IRON PIN SET WITH CAP STAMPED "CRAIG 8195"

Chad F. Craig

SURVEY BY: CHAD F. CRAIG P.S. #8195
for SEILER & CRAIG SURVEYING INC.
52-1/2 NORTH MAIN STREET
MANSFIELD, OHIO 44902
(419) 525-3644
FAX (419) 525-3696

SURVEY PLAT FOR

FERNYAK

PART LOT #624
CITY OF MANSFIELD
RICHLAND COUNTY, OHIO

DATE: AUGUST 17, 2012 SCALE: 1" = 30'

CAPELLAR_CT_10

SEILER & CRAIG SURVEYING, INC.

Douglas C. Seiler, P.S. & Chad F. Craig, P.S.

52 1/2 North Main Street

Mansfield, Ohio 44902

419-525-3644 Fax: 419-525-3696

www.seilerandcraig.com

SURVEY DESCRIPTION

PART LOT #624
CITY OF MANSFIELD,
RICHLAND COUNTY, OHIO

Situated in the City of Mansfield, County of Richland, State of Ohio and being known as Part Lot #624 of the consecutively numbered lots in said city, and being more particularly described as follows:

Beginning for the same at a 3 inch survey marker set in pavement marking the southeast corner of said lot, Thence, North 89 degrees 42 minutes 18 seconds West with the south line of said lot a distance of 70.31 feet to a drill hole found;

Thence, North 00 degrees 00 minutes 00 seconds East a distance of 70.00 feet to an iron pin found;

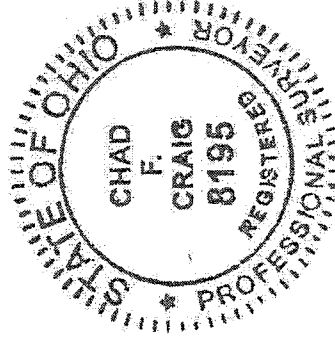
Thence, South 89 degrees 50 minutes 28 seconds East a distance of 69.95 feet to an iron pipe found on the east line of said lot

Thence, South 00 degrees 17 minutes 40 seconds East with the east line of said lot a distance of 70.17 feet to the place of beginning containing a total of 4915 square feet, according to survey by Chad F. Craig P.S. #8195 for Seiler and Craig Surveying, Inc. on August 17, 2012 but subject to all easements and right of ways of record.

Bearings are based on survey C-165 on file at the Richland County Tax Map Office and are intended to be used for angular determination only.

NEW SURVEY
OF EXISTING PARCEL
RICHLAND COUNTY
TAX MAP OFFICE

INITIAL dd
DATE 8-21-12
dd-218



Chad F. Craig

Chad F. Craig P.S. #8195

Seiler and Craig Surveying, Inc.