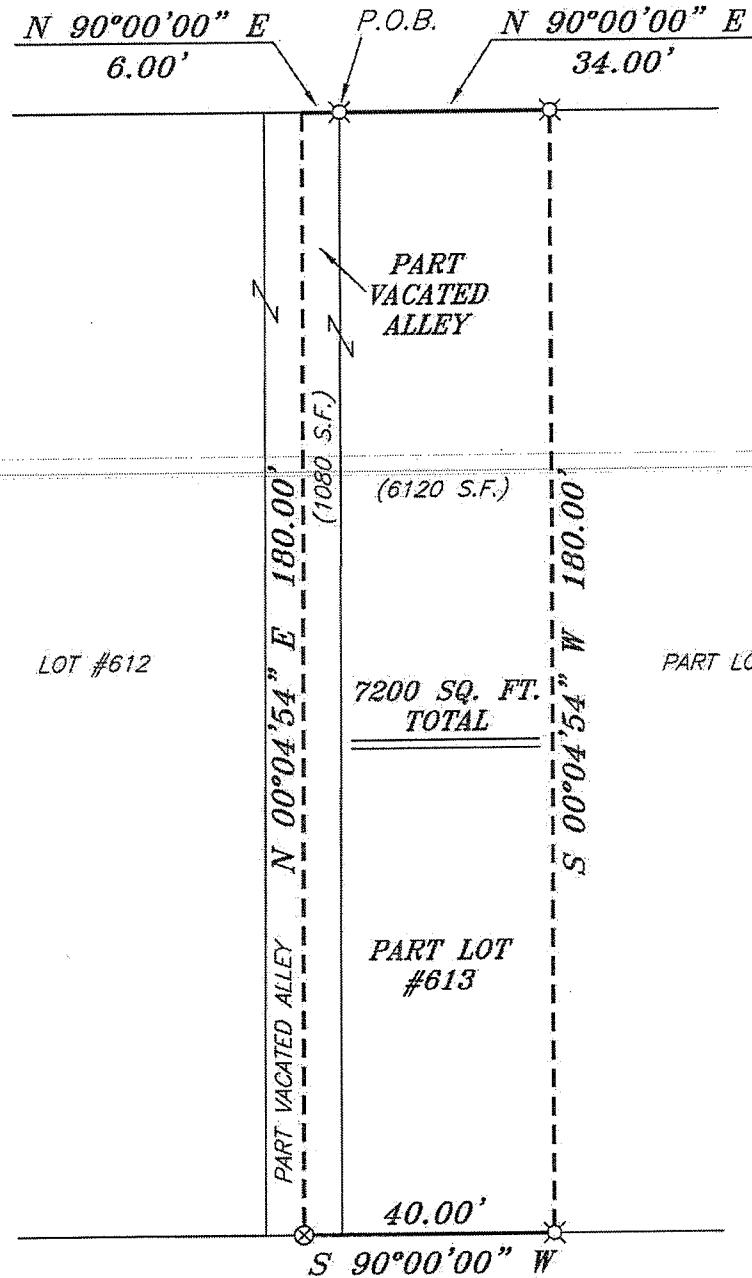
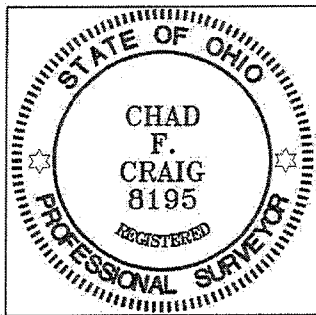


**EAST SECOND STREET 60' R/W**

**NORTH**



BEARINGS ARE BASED ON AN ASSUMED MERIDIAN AND ARE INTENDED TO BE USED FOR ANGULAR DETERMINATION ONLY



NEW SURVEY  
OF EXISTING PARCEL  
RICHLAND COUNTY  
TAX MAP OFFICE

INITIAL CF DATE 8-10-12  
dd-205

*Chad F. Craig*

SURVEY BY: CHAD F. CRAIG P.S. #8195  
for SEILER & CRAIG SURVEYING INC.  
52-1/2 NORTH MAIN STREET  
MANSFIELD, OHIO 44902  
(419) 525-3644  
FAX (419) 525-3696

**LEGEND**

- IRON PIN FOUND
- ⊕ 2" MAG NAIL SPIKE SET
- ⊗ 3" SURVEY MARKER SET
- △ RAILROAD SPIKE SET
- ▲ RAILROAD SPIKE FOUND
- ⊗ 5/8" IRON PIN SET WITH CAP STAMPED "CRAIG 8195"

SURVEY PLAT FOR PROPERTY TRANSFER	
PART LOT #613 & PART VACATED ALLEY CITY OF MANSFIELD RICHLAND COUNTY, OHIO	
DATE: AUGUST 10, 2012	SCALE: 1"=30'
SECOND_ST_142	

**MARSHALL AVENUE 20' R/W**

**SEILER & CRAIG SURVEYING, INC.**

Douglas C. Seiler, PS & Chad F. Craig, PS  
52 1/2 North Main Street  
Mansfield, Ohio 44902  
419-525-3644 Fax: 419-525-3696  
www.seilerandcraig.com

**SURVEY DESCRIPTION**

PART LOT #613 & PART OF VACATED ALLEY  
CITY OF MANSFIELD,  
RICHLAND COUNTY, OHIO

Situated in the City of Mansfield, County of Richland, State of Ohio and being known as Part Lot #613 of the consecutively numbered lots in said city and Part of Vacated Alley, and being more particularly described as follows:

Beginning for the same at an iron pin set marking the northwest corner of Lot #613, Thence, North 90 degrees 00 minutes 00 seconds East with the north line of said lot a distance of 34.00 feet to an iron pin set;

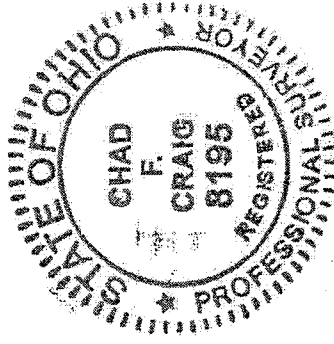
Thence, South 00 degrees 04 minutes 54 seconds West a distance of 180.00 feet to an iron pin set on the south line of said lot;

Thence, South 90 degrees 00 minutes 00 seconds West with the south line of said lot and the westerly prolongation thereof a distance of 40.00 feet to a 3 inch Survey Marker Set on the south line of a vacated alley;

Thence, North 00 degrees 04 minutes 54 seconds East a distance of 180.00 feet to a point on the north line of said vacated alley, referenced by an iron pin set on a bearing of North 90 degrees 00 minutes 00 seconds East and at a distance of 6.00 feet;

Thence, North 90 degrees 00 minutes 00 seconds East a distance of 6.00 feet to the place of beginning containing a total of 7200 square feet of which 6120 square feet are located within Part Lot #613 and 1080 square feet are located within Part of Vacated Alley, according to survey by Chad F. Craig P. S. #8195 for Seiler and Craig Surveying, Inc. on August 10, 2012 but subject to all easements and right of ways of record.

Bearings are based on an assumed meridian and are intended to be used for angular determination only.



NEW SURVEY  
OF EXISTING PARCEL  
RICHLAND COUNTY  
TAX MAP OFFICE

INITIAL DATE  
CS 8/10/12  
00 105

*Chad F. Craig*

Chad F. Craig P.S. #8195  
Seiler and Craig Surveying, Inc.