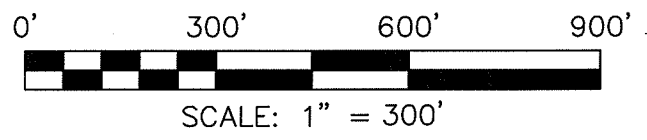
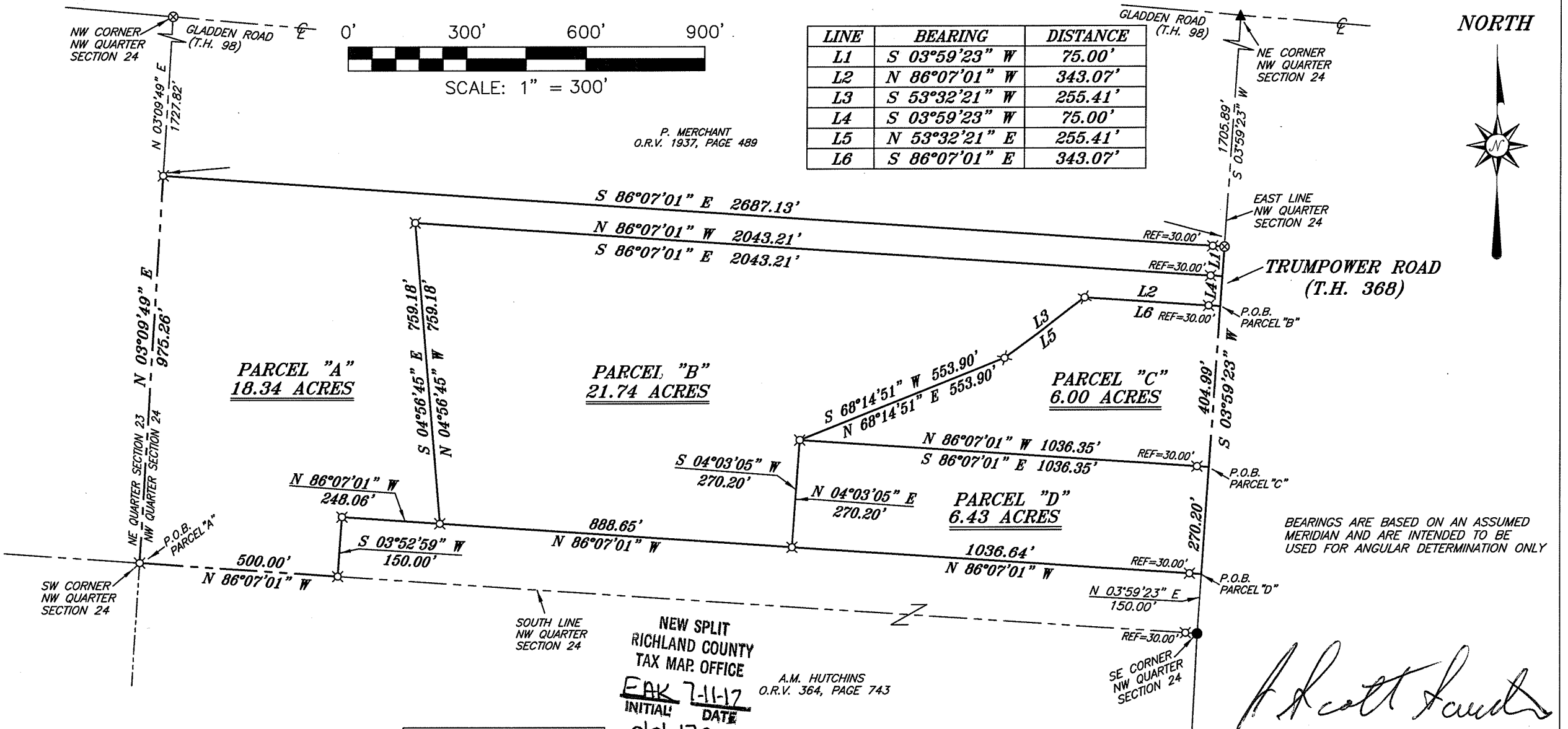
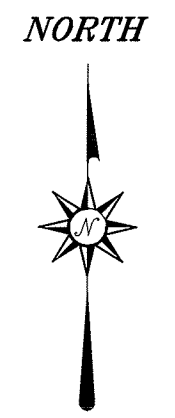


NW CORNER NW QUARTER SECTION 24
GLADDEN ROAD (T.H. 98)



P. MERCHANT
O.R.V. 1937, PAGE 489

LINE	BEARING	DISTANCE
L1	S 03°59'23" W	75.00'
L2	N 86°07'01" W	343.07'
L3	S 53°32'21" W	255.41'
L4	S 03°59'23" W	75.00'
L5	N 53°32'21" E	255.41'
L6	S 86°07'01" E	343.07'

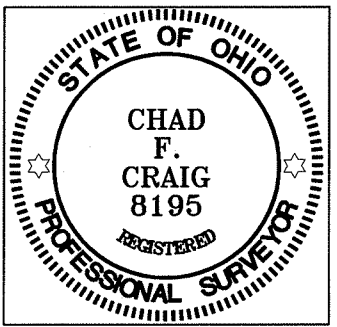


BEARINGS ARE BASED ON AN ASSUMED MERIDIAN AND ARE INTENDED TO BE USED FOR ANGULAR DETERMINATION ONLY

Chad F. Craig

NEW SPLIT
RICHLAND COUNTY
TAX MAP OFFICE
EAK 7-11-12
INITIAL DATE
dd-170

A.M. HUTCHINS
O.R.V. 364, PAGE 743



NEW SURVEY
OF EXISTING PARCEL
RICHLAND COUNTY
TAX MAP OFFICE
EAK 7-11-12
INITIAL DATE
dd-170

LEGEND

- IRON PIN FOUND
- ⊗ 3 INCH SURVEY SPIKE SET
- △ RAILROAD SPIKE SET
- ▲ RAILROAD SPIKE FOUND
- ⊗ 5/8" IRON PIN SET WITH CAP STAMPED "CRAIG 8195"

SURVEY PLAT FOR HUTCHINS	
PT. NW QTR. SECTION 24, T-22, R-17 MONROE TOWNSHIP RICHLAND COUNTY, OHIO	
DATE: MAY 9, 2012	SCALE: 1"=300'
HUTCHINS_2012	

Chad F. Craig
SURVEY BY: CHAD F. CRAIG P.S. #8195
for SEILER & CRAIG SURVEYING INC.
52-1/2 NORTH MAIN STREET
MANSFIELD, OHIO 44902
(419) 525-3644
FAX (419) 525-3696

SEILER & CRAIG SURVEYING, INC.

Douglas C. Seiler, PS & Chad F. Craig, PS
52 1/2 North Main Street
Mansfield, Ohio 44902
419-525-3644 Fax 419-525-3696
www.seilerandcraig.com

**SURVEY DESCRIPTION
PARCEL "A"**

PART NW QUARTER SECTION 24
MONROE TOWNSHIP
RICHLAND COUNTY, OHIO

Situated in the Township of Monroe, County of Richland, State of Ohio and being a part of the Northwest Quarter of Section 24, of Township 22 North, Range 17 West, and being more particularly described as follows:

Beginning for the same at an iron pin set marking the southwest corner of said quarter, Thence, North 03 degrees 09 minutes 49 seconds East with the west line of said quarter a distance of 975.26 feet to an iron pin set marking the southwest corner of a parcel currently owned by P. Merchant (O.R.V. 1937, Page 489);

Thence, South 86 degrees 07 minutes 01 second East with the south line of said Merchant parcel and passing through an iron pin set for reference at a distance of 2657.13 feet, a total distance of 2687.13 feet to a 3 inch survey spike set on the east line of said quarter, the same as being a point in Trumpower Road (T.H. 368);

Thence, South 03 degrees 59 minutes 23 seconds West with said east line and with said road a distance of 75.00 feet to a point referenced by an iron pin set on a bearing of North 86 degrees 07 minutes 01 second West and at a distance of 30.00 feet;

Thence, North 86 degrees 07 minutes 01 second West passing through said iron pin set, a total distance of 2043.21 feet to an iron pin set;

Thence, South 04 degrees 56 minutes 45 seconds East a distance of 759.18 feet to an iron pin set;

Thence, North 86 degrees 07 minutes 01 second West a distance of 248.06 feet to an iron pin set;

Thence, South 03 degrees 52 minutes 59 seconds West a distance of 150.00 feet to an iron pin set on the south line of said quarter;

Thence, North 86 degrees 07 minutes 01 second West with the south line of said quarter a distance of 500.00 feet to the place of beginning, containing 18.34 acres, according to survey by Chad F. Craig, Professional Surveyor #8195 for Seiler & Craig Surveying, Inc., on June 13, 2012, but subject to all easements and right of ways of record.

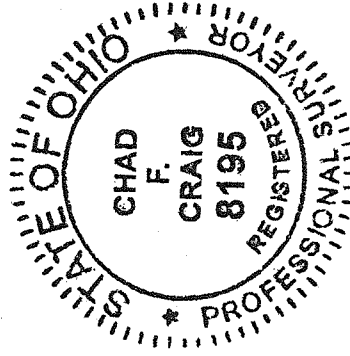
Iron pins set are 5/8" rods with caps stamped "CRAIG 8195".

Bearings are based on an assumed meridian and are intended to be used for angular determination only.

NEW SPLIT
RICHLAND COUNTY
TAX MAP OFFICE

EAK INITIAL
7-11-12 DATE

dd-170



Chad F. Craig

Chad F. Craig PS #8195
for Seiler & Craig Surveying, Inc.

Scott S. Seiler

SEILER & CRAIG SURVEYING, INC.

Douglas C. Seiler, PS & Chad F. Craig, PS
52 1/2 North Main Street
Mansfield, Ohio 44902
419-525-3644 Fax 419-525-3696
www.seilerandcraig.com

**SURVEY DESCRIPTION
PARCEL "B"**

PART NW QUARTER SECTION 24
MONROE TOWNSHIP
RICHLAND COUNTY, OHIO

Situated in the Township of Monroe, County of Richland, State of Ohio and being a part of the Northwest Quarter of Section 24, of Township 22 North, Range 17 West, and being more particularly described as follows:

Commencing at an iron pin found and accepted as marking the southeast corner of said quarter, and also marking a point in Trumpower Road (T.H. 368), Thence, North 03 degrees 59 minutes 23 seconds East with the east line of said quarter and with said road a distance of 825.19 feet to a point referenced by an iron pin set on a bearing of North 86 degrees 07 minutes 01 second West and at a distance of 30.00 feet, said point being the true place of beginning of the parcel herein described;

Thence, North 86 degrees 07 minutes 01 second West passing through said iron pin set, a total distance of 343.07 feet to an iron pin set;

Thence, South 53 degrees 32 minutes 21 seconds West a distance of 255.41 feet to an iron pin set;

Thence, South 68 degrees 14 minutes 51 seconds West a distance of 553.90 feet to an iron pin set;

Thence, South 04 degrees 03 minutes 05 seconds West a distance of 270.20 feet to an iron pin set;

Thence, North 86 degrees 07 minutes 01 second West a distance of 888.65 feet to an iron pin set;

Thence, North 04 degrees 56 minutes 45 seconds West a distance of 759.18 feet to an iron pin set;

Thence, South 86 degrees 07 minutes 01 second East passing through an iron pin set for reference at a distance of 2013.21 feet, a total distance of 2043.21 feet to a point on the east line of said quarter and in said road;

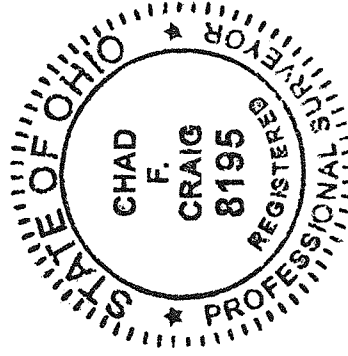
Thence, South 03 degrees 59 minutes 23 seconds West with said east line and with said road a distance of 75.00 feet to the place of beginning, containing 21.74 acres, according to survey by Chad F. Craig, Professional Surveyor #8195 for Seiler & Craig Surveying, Inc., on June 13, 2012, but subject to all easements and right of ways of record.

Iron pins set are 5/8" rods with caps stamped "CRAIG 8195".

Bearings are based on an assumed meridian and are intended to be used for angular determination only.

NEW SPLIT
RICHLAND COUNTY
TAX MAP OFFICE

FILED 7-11-12
INITIAL DATE
dd-170



Chad F. Craig

Chad F. Craig PS #8195
for Seiler & Craig Surveying, Inc.

Scott Sand

SEILER & CRAIG SURVEYING, INC.

Douglas C. Seiler, PS & Chad F. Craig, PS
52 1/2 North Main Street
Mansfield, Ohio 44902
419-525-3644 Fax 419-525-3696
www.seilerandcraig.com

**SURVEY DESCRIPTION
PARCEL "C"**

PART NW QUARTER SECTION 24
MONROE TOWNSHIP
RICHLAND COUNTY, OHIO

Situated in the Township of Monroe, County of Richland, State of Ohio and being a part of the Northwest Quarter of Section 24, of Township 22 North, Range 17 West, and being more particularly described as follows:

Commencing at an iron pin found and accepted as marking the southeast corner of said quarter, and also marking a point in Trumpower Road (T.H. 368), Thence, North 03 degrees 59 minutes 23 seconds East with the east line of said quarter and with said road a distance of 420.20 feet to a point referenced by an iron pin set on a bearing of North 86 degrees 07 minutes 01 second West and at a distance of 30.00 feet, said point being the true place of beginning of the parcel herein described;

Thence, North 86 degrees 07 minutes 01 second West passing through said iron pin set, a total distance of 1036.35 feet to an iron pin set;

Thence, North 68 degrees 14 minutes 51 seconds East a distance of 553.90 feet to an iron pin set;

Thence, North 53 degrees 32 minutes 21 seconds East a distance of 255.41 feet to an iron pin set;

Thence, South 86 degrees 07 minutes 01 second East passing through an iron pin set at a distance of 313.07 feet, a total distance of 343.07 feet to a point in the east line of said quarter and in said road;

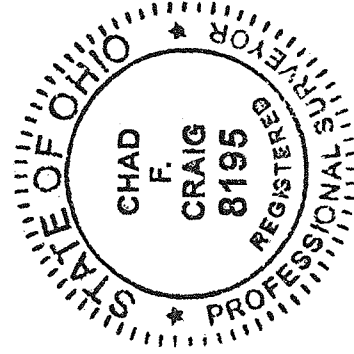
Thence, South 03 degrees 59 minutes 23 seconds West with said east line and with said road a distance of 404.99 feet to the place of beginning, containing 6.00 acres, according to survey by Chad F. Craig, Professional Surveyor #8195 for Seiler & Craig Surveying, Inc., on June 13, 2012, but subject to all easements and right of ways of record.

Iron pins set are 5/8" rods with caps stamped "CRAIG 8195".

Bearings are based on an assumed meridian and are intended to be used for angular determination only.

NEW SPLIT
RICHLAND COUNTY
TAX MAP OFFICE
FAX INITIAL DATE
7-11-12

dd-170



Chad F. Craig

Chad F. Craig, PS #8195
for Seiler & Craig Surveying, Inc.

f. Scott & Sons

SEILER & CRAIG SURVEYING, INC.

Douglas C. Seiler, PS & Chad F. Craig, PS
52 1/2 North Main Street
Mansfield, Ohio 44902
419-525-3644 Fax 419-525-3696
www.seilerandcraig.com

**SURVEY DESCRIPTION
PARCEL "D"**

PART NW QUARTER SECTION 24
MONROE TOWNSHIP
RICHLAND COUNTY, OHIO

Situated in the Township of Monroe, County of Richland, State of Ohio and being a part of the Northwest Quarter of Section 24, of Township 22 North, Range 17 West, and being more particularly described as follows:

Commencing at an iron pin found and accepted as marking the southeast corner of said quarter, and also marking a point in Trumpower Road (T.H. 368), Thence, North 03 degrees 59 minutes 23 seconds East with the east line of said quarter and with said road a distance of 150.00 feet to a point referenced by an iron pin set on a bearing of North 86 degrees 07 minutes 01 second West and at a distance of 30.00 feet, said point being the true place of beginning of the parcel herein described;

Thence, North 86 degrees 07 minutes 01 second West passing through said iron pin set, a total distance of 1036.64 feet to an iron pin set;

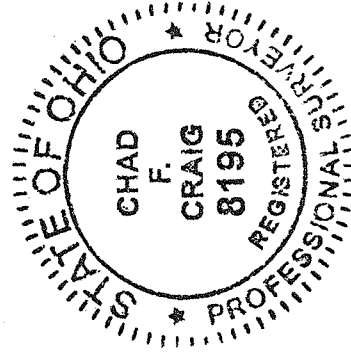
Thence, North 04 degrees 03 minutes 05 seconds East a distance of 270.20 feet to an iron pin set;

Thence, South 86 degrees 07 minutes 01 second East passing through an iron pin set for reference at a distance of 1006.35 feet, a total distance of 1036.35 feet to a point on the east line of said quarter and in said road;

Thence, South 03 degrees 59 minutes 23 seconds West with said east line and with said road a distance of 270.20 feet to the place of beginning, containing 6.43 acres, according to survey by Chad F. Craig, Professional Surveyor #8195 for Seiler & Craig Surveying, Inc., on June 13, 2012, but subject to all easements and right of ways of record.

Iron pins set are 5/8" rods with caps stamped "CRAIG 8195".

Bearings are based on an assumed meridian and are intended to be used for angular determination only.



Chad F. Craig

Chad F. Craig PS #8195
for Seiler & Craig Surveying, Inc.

NEW SURVEY
OF EXISTING PARCEL
RICHLAND COUNTY
TAX MAP OFFICE

EAH 7-11-12
INITIAL DATE
dd-170

A Scott Saults