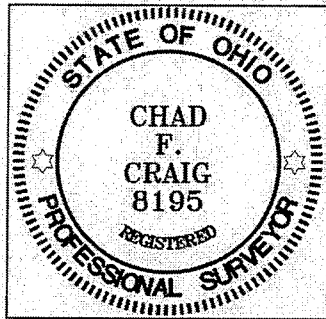
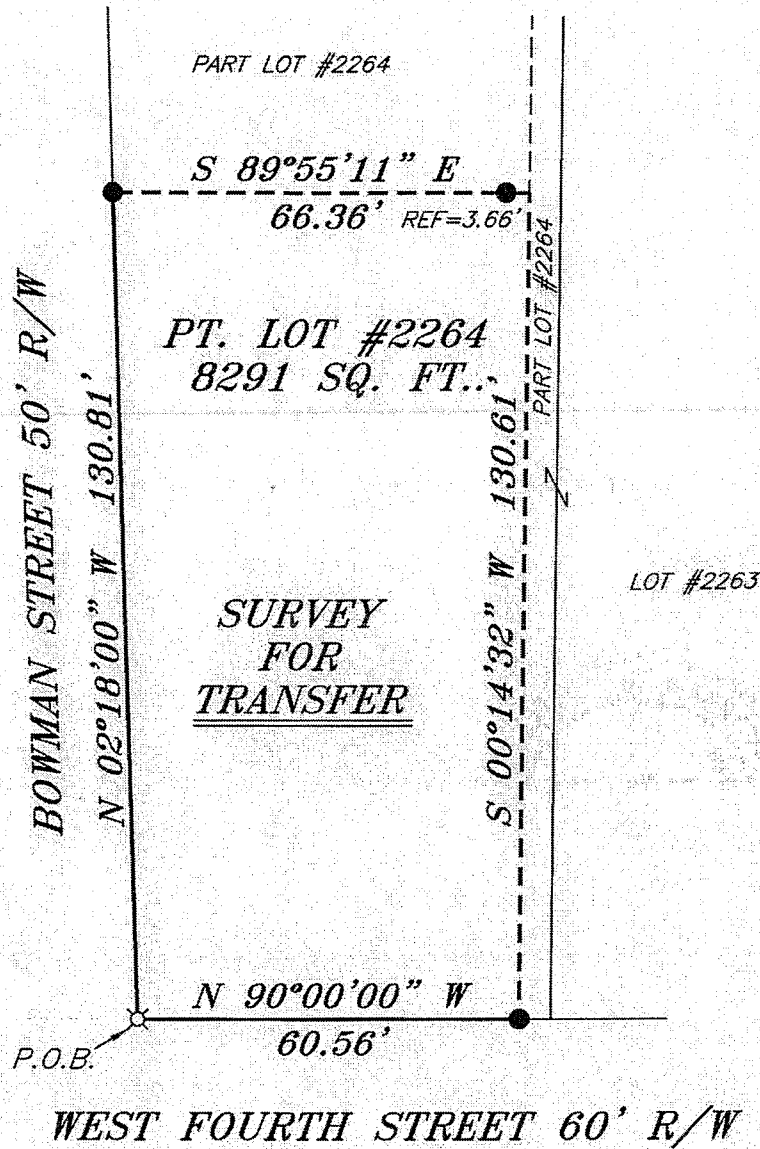


NORTH



BEARINGS ARE BASED ON AN ASSUMED MERIDIAN AND ARE INTENDED TO BE USED FOR ANGULAR DETERMINATION ONLY



NEW SURVEY
OF EXISTING PARCEL
RICHLAND COUNTY
TAX MAP OFFICE
EAK 5-31-12
INITIAL DATE
dd-137

LEGEND

- IRON PIN FOUND
- ⊗ 2" MAG NAIL SPIKE SET
- ⊗ 3" SURVEY MARKER SET
- △ RAILROAD SPIKE SET
- ▲ RAILROAD SPIKE FOUND
- ⊗ 5/8" IRON PIN SET WITH CAP STAMPED "CRAIG 8195"

Chad F. Craig
SURVEY BY: CHAD F. CRAIG P.S. #8195
for SEILER & CRAIG SURVEYING INC.
52-1/2 NORTH MAIN STREET
MANSFIELD, OHIO 44902
(419) 525-3644
FAX (419) 525-3696

SURVEY PLAT FOR PROPERTY TRANSFER	
PART LOT #2264 CITY OF MANSFIELD RICHLAND COUNTY, OHIO	
DATE: MAY 21, 2012	SCALE: 1"=30'
FOURTH_ST_200	

SEILER & CRAIG SURVEYING, INC.

Douglas C. Seiler, PS & Chad F. Craig, PS

52 1/2 North Main Street

Mansfield, Ohio 44902

419-525-3644 Fax: 419-525-3696

www.seilerandcraig.com

SURVEY DESCRIPTION

PART LOT #2264
CITY OF MANSFIELD
RICHLAND COUNTY, OHIO

Situated in the City of Mansfield, County of Richland, State of Ohio and being known as part of Lot #2264 of the consecutively numbered lots in said city, and being more particularly described as follows:

Beginning for the same at an iron pin set on the southwest corner of said lot; Thence, North 02 degrees 18 minutes 00 seconds West with the west line of said lot, a distance of 130.81 feet to an iron pin found;

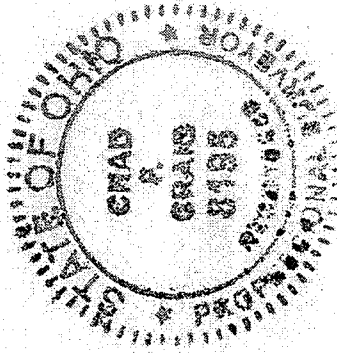
Thence, South 89 degrees 55 minutes 11 seconds East passing through an iron pin found at a distance of 62.70 feet, a total distance of 66.36 feet to a point;

Thence, South 00 degrees 14 minutes 32 seconds West a distance of 130.61 feet to an iron pin found on the south line of said lot;

Thence, North 90 degrees 00 minutes 00 seconds West with said south line, a distance of 60.56 feet to the place of beginning containing 8291 square feet according to survey by Chad F. Craig P.S. #8195 for Seiler and Craig Surveying, Inc. on May 21, 2012 but subject to all easements of record.

Bearings are based on an assumed meridian and are intended to be used for angular determination only.

NEW SURVEY
OF EXISTING PARCEL
RICHLAND COUNTY
TAX MAP OFFICE
EAK INITIAL
5-31-12 DATE
dd-137



Chad F. Craig

Chad F. Craig P.S. #8195
Seiler and Craig Surveying, Inc.