



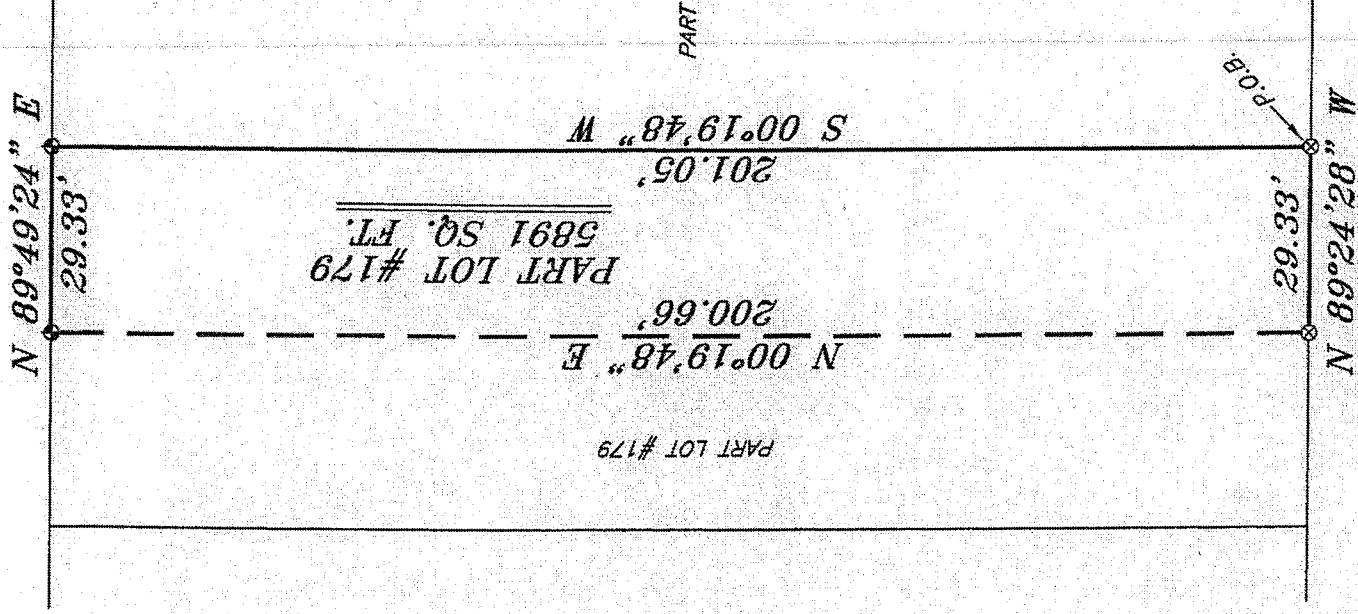
SCALE: 1" = 30'

NORTH



BEARINGS ARE BASED ON SURVEY V-89 ON FILE AT THE RICHLAND COUNTY TAX MAP OFFICE AND ARE INTENDED TO BE USED FOR ANGULAR DETERMINATION ONLY

SOUTH PARK STREET 100' R/W

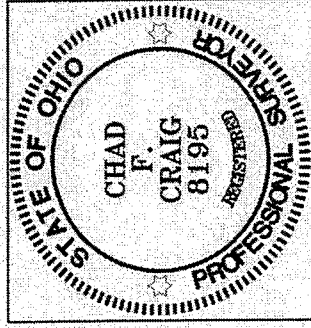


LOT #180

PART LOT #178

EAST SECOND STREET 60' R/W

NEW SURVEY
OF EXISTING PARCEL
RICHLAND COUNTY
TAX MAP OFFICE
EAK INITIAL 5-25-10 DATE
dd-129



LEGEND

- IRON PIN FOUND
- ⊗ 3 INCH SURVEY SPIKE SET
- ⊠ CHISELED "X" IN CONCRETE
- ⬢ CORNER OF MASONRY BUILDING
- ⊠ 5/8" IRON PIN SET WITH CAP STAMPED "CRAIG 8195"

Chad F. Craig

SURVEY BY: CHAD F. CRAIG P.S. #8195
FOR SEILER & CRAIG SURVEYING INC.
52-1/2 NORTH MAIN STREET
MANSFIELD, OHIO 44902
(419) 525-3644
FAX (419) 525-3696

SURVEY PLAT FOR
PROPERTY TRANSFER

PART LOT #179
CITY OF MANSFIELD
RICHLAND COUNTY, OHIO

DATE: MAY 18, 2012 SCALE: 1"=30'

SOUTH-PARK_ST_12-14

SEILER & CRAIG SURVEYING, INC.

Douglas C. Seiler, PS & Chad F. Craig, PS

52 1/2 North Main Street

Mansfield, Ohio 44902

419-525-3644 Fax: 419-525-3696

www.seilerandcraig.com

SURVEY DESCRIPTION

PART LOT #179
CITY OF MANSFIELD,
RICHLAND COUNTY, OHIO

Situated in the City of Mansfield, County of Richland, State of Ohio and being known as Part Lot #179 of the consecutively numbered lots in said city, and being more particularly described as follows:

Beginning for the same at a 3 inch survey spike set marking the southeast corner of Lot #179, Thence, North 89 degrees 24 minutes 28 seconds West with the south line of said lot a distance of 29.33 feet to a 3 inch survey spike set;

Thence, North 00 degrees 19 minutes 48 seconds East a distance of 200.66 feet to a corner of masonry building, marking a point on the north line of said lot;

Thence, North 89 degrees 49 minutes 24 seconds East with said north line a distance of 29.33 feet to a corner of masonry building, marking the northeast corner of said lot;

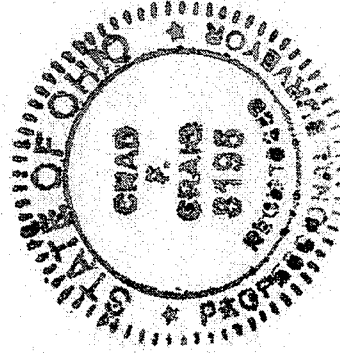
Thence, South 00 degrees 19 minutes 48 seconds West with the west line of said lot a distance of 201.05 feet to the place of beginning containing a total of 5891 square feet, according to survey by Chad F. Craig P.S. #8195 for Seiler and Craig Surveying, Inc. on May 18, 2012 but subject to all easements and right of ways of record.

Bearings are based on survey V-89 on file at the Richland County Tax Map Office and are intended to be used for angular determination only.

NEW SURVEY
OF EXISTING PARCEL
RICHLAND COUNTY
TAX MAP OFFICE

EAV INITIAL
5-25-10 DATE

dd-129



Chad F. Craig

Chad F. Craig P.S.#8195
Seiler and Craig Surveying, Inc.