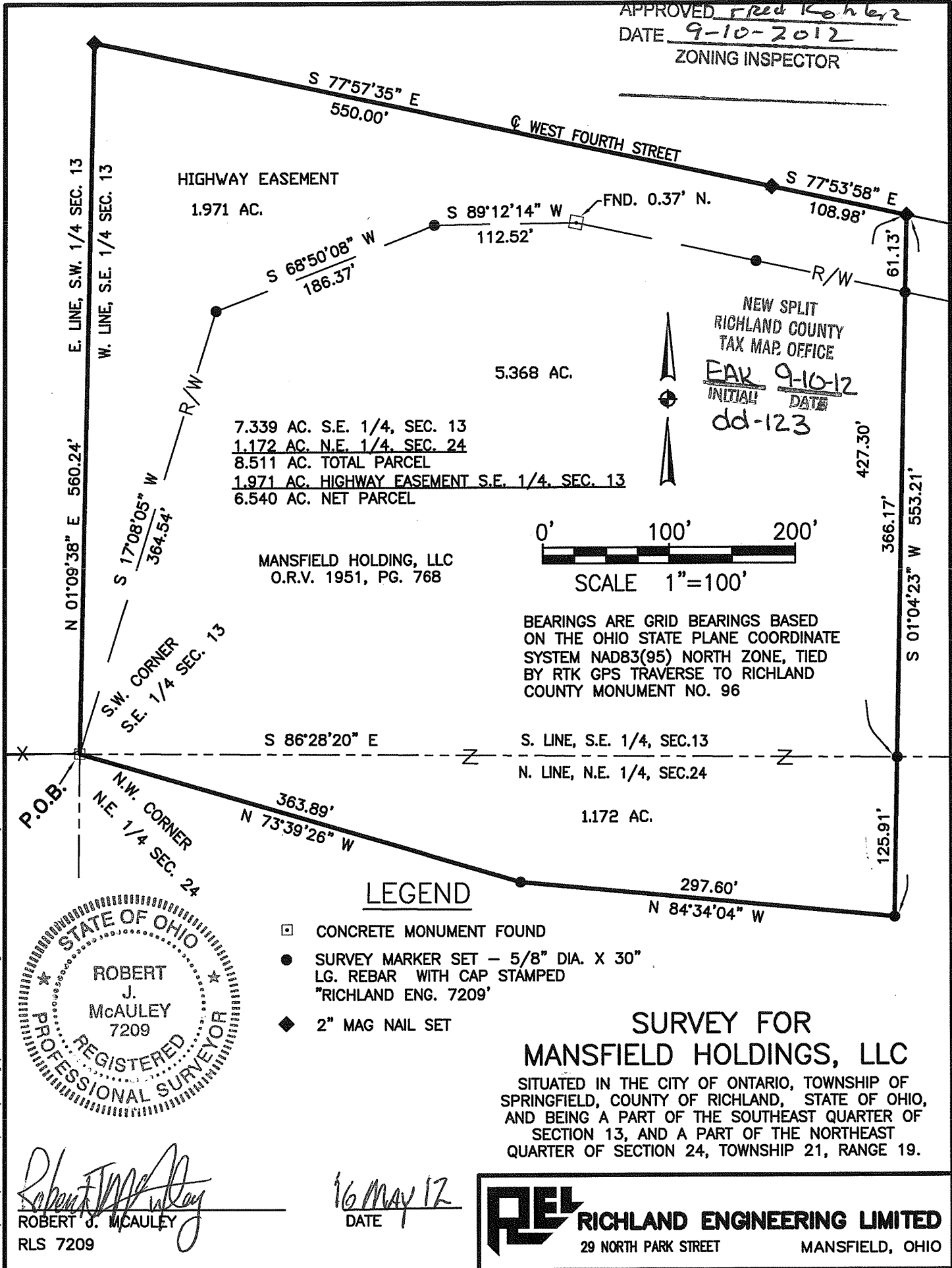


CITY OF ONTARIO

APPROVED Fred Kohler

DATE 9-10-2012

ZONING INSPECTOR



MANSFIELD HOLDING, LLC
O.R.V. 1951, PG. 768

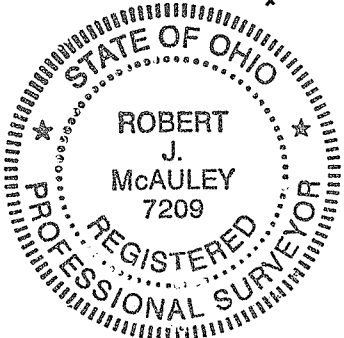
BEARINGS ARE GRID BEARINGS BASED ON THE OHIO STATE PLANE COORDINATE SYSTEM NAD83(95) NORTH ZONE, TIED BY RTK GPS TRAVERSE TO RICHLAND COUNTY MONUMENT NO. 96

LEGEND

- CONCRETE MONUMENT FOUND
- SURVEY MARKER SET - 5/8" DIA. X 30" LG. REBAR WITH CAP STAMPED "RICHLAND ENG. 7209"
- ◆ 2" MAG NAIL SET

SURVEY FOR MANSFIELD HOLDINGS, LLC

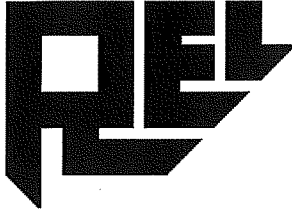
SITUATED IN THE CITY OF ONTARIO, TOWNSHIP OF SPRINGFIELD, COUNTY OF RICHLAND, STATE OF OHIO, AND BEING A PART OF THE SOUTHEAST QUARTER OF SECTION 13, AND A PART OF THE NORTHEAST QUARTER OF SECTION 24, TOWNSHIP 21, RANGE 19.



Robert J. McAuley
 ROBERT J. MCAULEY
 RLS 7209

16 May 12
 DATE

REL RICHLAND ENGINEERING LIMITED
 29 NORTH PARK STREET MANSFIELD, OHIO



RICHLAND ENGINEERING LIMITED

29 North Park Street, Mansfield, Ohio 44902-1769 • 419-524-0074 FAX 419-524-1812

111077

DESCRIPTIONS OF SURVEY FOR MANSFIELD HOLDING, LLC

Situated in the City of Ontario, Township of Springfield, County of Richland, State of Ohio and being part of the Southeast Quarter of Section 13, and being part of the Northeast Quarter of Section 24, Township 21, Range 19 and being more particularly described as follows:

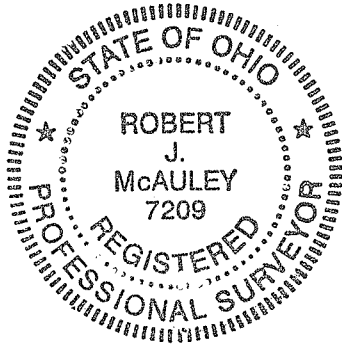
Beginning at a concrete monument found at the southwest corner of the Southeast Quarter of Section 13, also being the northwest corner of the Northeast Quarter of Section 24;

1. Thence **North 01°09'38" East** a distance of **560.24 feet** to a 2 inch MAG nail set on the centerline of West Fourth Street;
2. Thence **South 77°57'35" East** along the centerline of West Fourth Street, a distance of **550.00 feet** to a 2 inch MAG nail set;
3. Thence **South 77°53'58" East** continuing along the centerline of West Fourth Street, a distance of **108.98 feet** to a 2 inch MAG nail set;
4. Thence **South 01°04'23" West**, passing through a survey marker set at **61.13 feet** and **427.30 feet**, a total distance of **553.21 feet** to a survey marker set;
5. Thence **North 84°34'04" West** a distance of **297.60 feet** to a survey marker set;
6. Thence **North 73°39'26" West** a distance of **363.89 feet** to the concrete monument found at the **Point of Beginning**, and containing **8.511 acres** of land, of which **1.172 acres** are in the Northeast Quarter of Section 24 and **7.339 acres** are in the Southeast Quarter of Section 13, of which the present road occupies **1.971 acres** in the Southeast Quarter of Section 13 resulting in a net parcel of **6.540 acres** more or less subject to all highways, easements, and use restrictions of record.

This description is based upon an actual field survey made April 2012 by Richland Engineering Limited. All bearings are based on the Ohio State Plane Coordinate System, NAD83(95) north zone, tied by RTK GPS traverse to Richland County Geodetic monument no. 96.

Survey markers set are 5/8 inch diameter by 30 inch long rebar with a plastic cap stamped "RICHLAND ENG. 7209".

Deed Reference: Official Record Volume 1951, Page 768.



Robert J. McAuley 16 May 12
Robert J. McAuley Date
P. S. No. 7209

CITY OF ONTARIO
APPROVED *Fred Kohler*
DATE 9-10-2012
ZONING INSPECTOR

NEW SPLIT
RICHLAND COUNTY
TAX MAP OFFICE
EAV. 9-10-12
INITIAL DATE
dd-123