

- Ⓐ T. J. KOCHHEISER
T. J. HAUSE
D. L. HUDSON
O.R.V. 1385, PAGE 900
- Ⓑ G. & J. RINEHART
O.R.V. 1118, PAGE 575

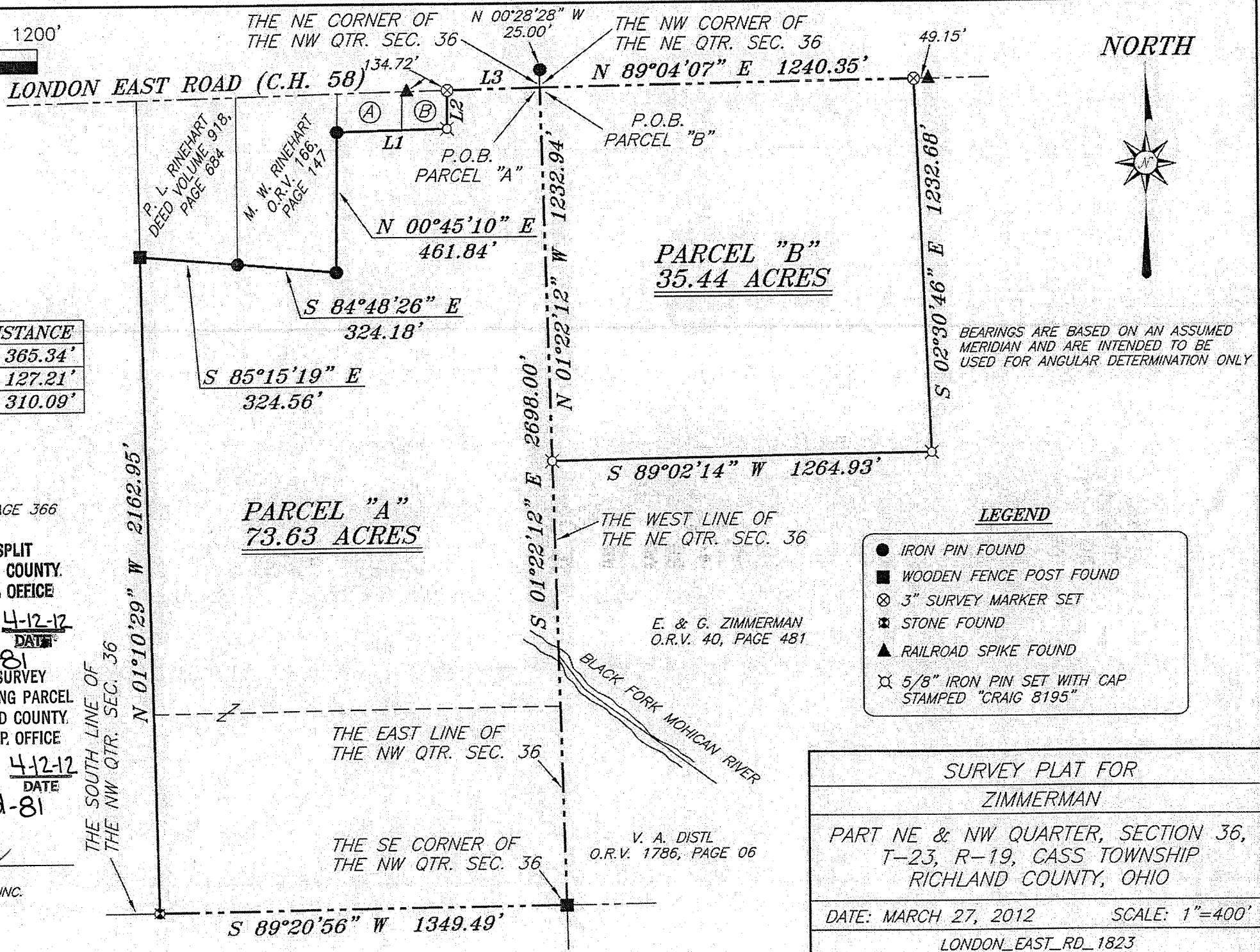
LINE	BEARING	DISTANCE
L1	N 88°34'44" E	365.34'
L2	N 00°45'10" E	127.21'
L3	N 88°29'14" E	310.09'

S. F. TAYLOR
DEED VOLUME 884, PAGE 366



NEW SPLIT
RICHLAND COUNTY
TAX MAP OFFICE
EAK 4-12-12
INITIAL DATE
dd-81
NEW SURVEY
OF EXISTING PARCEL
RICHLAND COUNTY
TAX MAP OFFICE
EAK 4-12-12
INITIAL DATE
dd-81

SURVEY BY: *Chad F. Craig*
CHAD F. CRAIG P.S. #8195
for SEILER & CRAIG SURVEYING INC.
52-1/2 NORTH MAIN STREET
MANSFIELD, OHIO 44902
(419) 525-3644
FAX (419) 525-3696



SEILER & CRAIG SURVEYING, INC.

Douglas C. Seiler, PS & Chad F. Craig, PS

52 ½ North Main Street

Mansfield, Ohio 44902

419-525-3644 Fax: 419-525-3696

www.seilerandcraig.com

**SURVEY DESCRIPTION
PARCEL "A"**

**PART OF THE NW QUARTER OF SECTION 36
CASS TOWNSHIP
RICHLAND COUNTY, OHIO**

Situated in the Township of Cass, County of Richland, State of Ohio and being a part of the Northwest Quarter of Section 36, of Township 23 North, Range 19 West, and being more particularly described as follows:

Beginning for the same at the northeast corner of said quarter section, the same being a point in London East Road (C.H. 58) and referenced by an iron pin found on a bearing of North 00 degrees 28 minutes 28 seconds West and at a distance of 25.00 feet; Thence, South 01 degree 22 minutes 12 seconds East with the east line of said quarter, a distance of 2698.00 feet to a wooden fence post found on the southeast corner of said quarter;

Thence, South 89 degrees 20 minutes 56 seconds West with the south line of said quarter, a distance of 1349.49 feet to a stone found, said stone marking the southeast corner of a parcel currently owned by S.F. Taylor (D.V. 884, Page: 366);

Thence, North 01 degree 10 minutes 29 seconds West with the east line of said Taylor parcel, a distance of 2162.95 feet to a wooden fence post found and accepted as marking the southwest corner of a parcel currently owned by P.L. Rinehart (D.V. 918, Page: 684);

Thence, South 85 degrees 15 minutes 19 seconds East with the south line of said Rinehart parcel, a distance of 324.56 feet to an iron pin found on the southeast corner thereof, the same being the southwest corner of a parcel currently owned by M.W. Rinehart (O.R.V. 166, Page: 147);

Thence, South 84 degrees 48 minutes 26 seconds East with the south line of said M.W. Rinehart parcel, a distance of 324.18 feet to an iron pin found on the southeast corner thereof;

Thence, North 00 degrees 45 minutes 10 seconds East with the east line of said M.W. Rinehart parcel, a distance of 461.84 feet to an iron pin found and accepted as marking the south west corner of a parcel currently owned by T.J. Kochheiser, T.J. Hause and D.L. Hudson (O.R.V. 1385, Page: 900);

Thence, North 88 degrees 34 minutes 44 seconds East with the south line of said Kochheiser, Hause and Hudson parcel and the easterly prolongation thereof, a distance of 365.34 feet to an iron pin set on the southeast corner of a parcel currently owned by G. and J. Rinehart (O.R.V. 1118, Page: 575);

Thence, North 00 degrees 45 minutes 10 seconds East with the east line of said G. and J. Rinehart parcel, a distance of 127.21 feet to a 3 inch survey marker set on the north line of said quarter and in said London East Road,

Thence, North 88 degrees 29 minutes 14 seconds East with said north line, a distance of 310.09 feet to the place of beginning, containing 73.63 acres according to survey by Chad F. Craig P.S. #8195 for Seiler & Craig Surveying, Inc. on March 27, 2012, but subject to all easements of record.

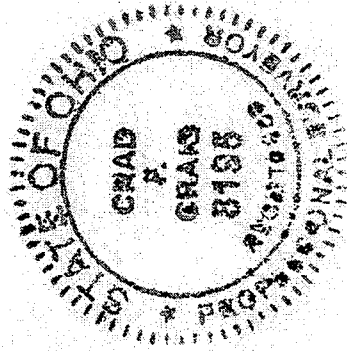
Iron pins set are 5/8" rods with caps stamped "CRAIG 8195".

Bearings are based on an assumed meridian and are intended to be used for angular determination only.

NEW SURVEY
OF EXISTING PARCEL
RICHLAND COUNTY
TAX MAP OFFICE

FAK 4-12-12
INITIAL DATE

dd-81



A handwritten signature in cursive script that reads "Chad F. Craig".

Chad F. Craig P/S #8195
for Seiler & Craig Surveying, Inc.

SEILER & CRAIG SURVEYING, INC.

Douglas C. Seiler, PS & Chad F. Craig, PS

52 1/2 North Main Street

Mansfield, Ohio 44902

419-525-3644 Fax: 419-525-3696

www.seilerandcraig.com

**SURVEY DESCRIPTION
PARCEL "B"**

PART OF THE NE QUARTER OF SECTION 36
CASS TOWNSHIP
RICHLAND COUNTY, OHIO

Situated in the Township of Cass, County of Richland, State of Ohio and being a part of the Northeast Quarter of Section 36, of Township 23 North, Range 19 West, and being more particularly described as follows:

Beginning for the same at the northwest corner of said quarter section, the same being a point in London East Road (C.H. 58) and referenced by an iron pin found on a bearing of North 00 degrees 28 minutes 28 seconds West and at a distance of 25.00 feet; Thence, North 89 degrees 04 minutes 07 seconds East with the north line of said quarter section, a distance of 1240.35 feet to an 3 inch survey marker set;

Thence, South 02 degrees 30 minutes 46 seconds East a distance of 1232.68 feet to an iron pin set;

Thence, South 89 degrees 02 minutes 14 seconds West a distance of 1264.93 feet to an iron pin set on the west line of said quarter section;

Thence, North 01 degree 22 minutes 12 seconds West with said west line, a distance of 1232.94 feet to the place of beginning, containing 35.44 acres according to survey by Chad F. Craig P.S. #8195 for Seiler & Craig Surveying, Inc. on March 27, 2012, but subject to all easements of record.

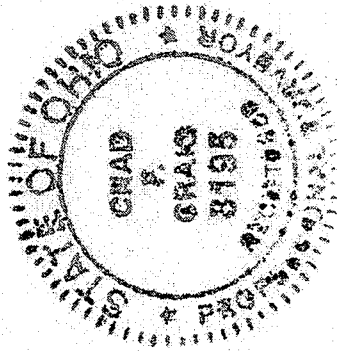
Iron pins set are 5/8" rods with caps stamped "CRAIG 8195".

Bearings are based on an assumed meridian and are intended to be used for angular determination only.

NEW SPLIT
RICHLAND COUNTY
TAX MAP OFFICE

INITIAL FAK DATE 4-12-12

dd-81



Chad F. Craig
Chad F. Craig P.S.#8195
for Seiler & Craig Surveying, Inc.