

LINE	BEARING	DISTANCE
L1	N 01°41'47" W	50.00'
L2	N 02°40'08" W	20.00'
L3	N 85°28'52" E	13.75'

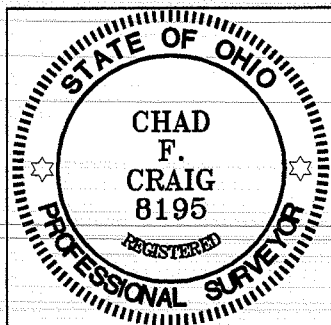
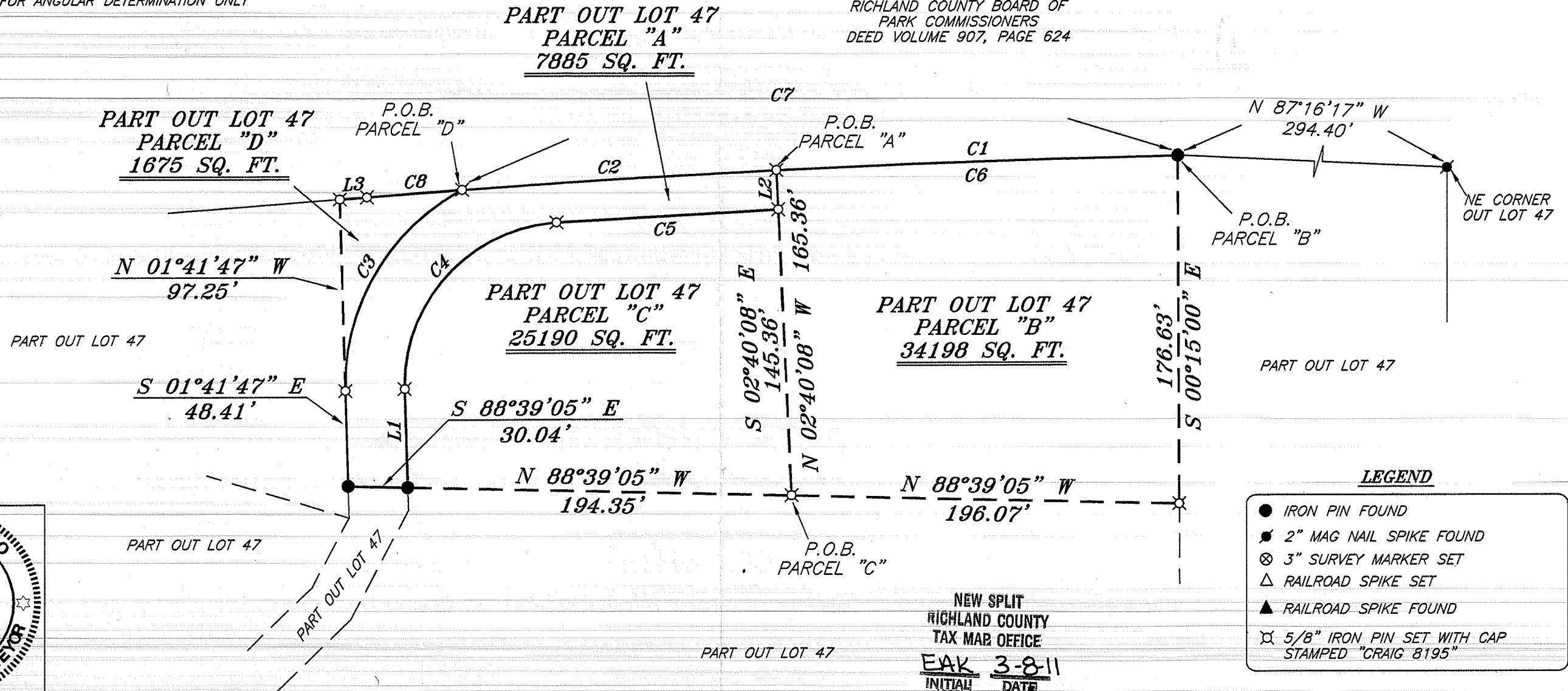
CURVE	RADIUS	DELTA ANGLE	ARC LENGTH	CHORD BEARING	CHORD LENGTH
C1	6842.55'	01°42'01"	203.07'	S 88°04'13" W	203.06'
C2	6842.55'	01°20'09"	159.54'	S 86°33'08" W	159.53'
C3	112.00'	63°22'46"	123.89'	S 29°59'36" W	117.67'
C4	82.00'	87°58'16"	125.90'	N 42°17'21" E	113.89'
C5	6822.55'	00°56'43"	112.56'	N 86°44'50" E	112.56'
C6	6842.55'	01°42'01"	203.07'	N 88°04'13" E	203.06'
C7	6842.55'	03°02'10"	362.60'	S 87°24'09" W	362.56'
C8	6842.55'	00°24'11"	48.13'	N 85°40'58" E	48.13'

NORTH



BEARINGS ARE BASED ON AN ASSUMED MERIDIAN AND ARE INTENDED TO BE USED FOR ANGULAR DETERMINATION ONLY

RICHLAND COUNTY BOARD OF PARK COMMISSIONERS
DEED VOLUME 907, PAGE 624



Chad F. Craig

SURVEY BY: CHAD F. CRAIG P.S. #8195
for SEILER & CRAIG SURVEYING INC.
52-1/2 NORTH MAIN STREET
MANSFIELD, OHIO 44902
(419) 525-3644
FAX (419) 525-3696

APPROVED BY VILLAGE OF BELLVILLE PLANNING COMMISSION
J. Fred Stull
J. FRED STULL, CHAIR.
3-7-12

NEW SPLIT
RICHLAND COUNTY
TAX MAP OFFICE
EAK 3-8-11
INITIAL DATE
dd-54

NEW SURVEY
OF EXISTING PARCEL
RICHLAND COUNTY
TAX MAP OFFICE
EAK 3-8-11
INITIAL DATE
dd-54

LEGEND

- IRON PIN FOUND
- 2" MAG NAIL SPIKE FOUND
- ⊗ 3" SURVEY MARKER SET
- △ RAILROAD SPIKE SET
- ▲ RAILROAD SPIKE FOUND
- ⊗ 5/8" IRON PIN SET WITH CAP STAMPED "CRAIG 8195"

SURVEY PLAT FOR
PROPERTY TRANSFER

PART OUT LOT 47
VILLAGE OF BELLVILLE
RICHLAND COUNTY, OHIO

DATE: FEBRUARY 28, 2012 SCALE: 1"=60'

FLOWERS_DR_131_FEB2012

SEILER & CRAIG SURVEYING, INC.

Douglas C. Seiler, PS & Chad F. Craig, PS
52 1/2 North Main Street
Mansfield, Ohio 44902
419-525-3644 Fax 419-525-3696
www.seilerandcraig.com

**SURVEY DESCRIPTION
PARCEL "A"**

NEW SPLIT
RICHLAND COUNTY
TAX MAP OFFICE
EAK INITIAL 3-8-11 DATE

ddd-54

PART OUT LOT 47
VILLAGE OF BELLVILLE,
RICHLAND COUNTY, OHIO

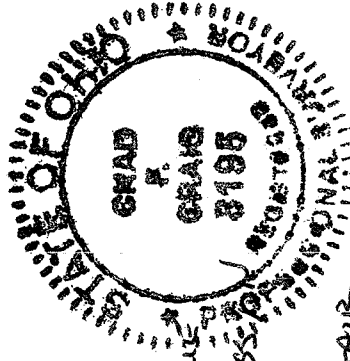
Situated in the Village of Bellville, County of Richland, State of Ohio and being known as part of Out Lot 47 in said village, and being more particularly described as follows:

Commencing at a Mag Nail spike found and accepted as marking the northeast corner of said out lot; Thence, North 87 degrees 16 minutes 17 seconds West with the north line of said out lot, a distance of 294.40 feet to an iron pin found; Thence with a curve to the left having a central angle of 01 degrees 42 minutes 01 second, a radius of 6842.55 feet, an arc length of 203.07 feet, a chord bearing of South 88 degrees 04 minutes 13 seconds West and a chord distance of 203.06 feet to an iron pin set the place of beginning of the parcel herein described;

Thence, the following eight (8) courses and distances:

1. With a curve to the left having a central angle of 01 degree 20 minutes 09 seconds, a radius of 6842.55 feet, an arc length of 159.54 feet, a chord bearing of South 86 degrees 33 minutes 08 seconds West and a chord distance of 159.53 feet to an iron pin set
2. With a curve to the left having a central angle of 63 degrees 22 minutes 46 seconds, a radius of 112.00 feet, an arc length of 123.89 feet, a chord bearing of South 29 degrees 59 minutes 36 seconds West and a chord distance of 117.67 feet to an iron pin set
3. South 01 degree 41 minutes 47 seconds East 48.41 feet to an iron pin found
4. South 88 degrees 39 minutes 05 seconds East 30.04 feet to an iron pin found
5. North 01 degree 41 minutes 47 seconds West 50.00 feet to an iron pin set
6. With a curve to the right having a central angle of 87 degrees 58 minutes 16 seconds, a radius of 82.00 feet, an arc length of 125.90 feet, a chord bearing of North 42 degrees 17 minutes 21 seconds East and a chord distance of 113.89 feet to an iron pin set
7. With a curve to the right having a central angle of 00 degrees 56 minutes 43 seconds, a radius of 6822.55 feet, an arc length of 112.56 feet, a chord bearing of North 86 degrees 44 minutes 50 seconds East and a chord length of 112.56 feet to an iron pin set
8. North 02 degrees 40 minutes 08 seconds West 20.00 feet to the place of beginning containing 7885 square feet according to survey by Chad F. Craig P.S. #8195 for Seiler and Craig Surveying, Inc. on February 28, 2012 but subject to all easements of record.

Bearings are based on an assumed meridian and are intended to be used for angular determination only.



APPROVED BY
VILLAGE OF BELLVILLE
PLANNING COMMISSION
Jeffrey Stull
JEFFREY STULL, CHAIR
3-7-12

Chad F. Craig
Chad F. Craig P.S. #8195
Seiler and Craig Surveying, Inc.

SEILER & CRAIG SURVEYING, INC.

Douglas C. Seiler, PS & Chad F. Craig, PS

52 1/2 North Main Street

Mansfield, Ohio 44902

419-525-3644 Fax: 419-525-3696

www.seilerandcraig.com

**SURVEY DESCRIPTION
PARCEL "B"**

PART OUT LOT 47
VILLAGE OF BELLVILLE,
RICHLAND COUNTY, OHIO

Situated in the Village of Bellville, County of Richland, State of Ohio and being known as part of Out Lot 47 in said village, and being more particularly described as follows:

Commencing at a Mag Nail spike found and accepted as marking the northeast corner of said out lot; Thence, North 87 degrees 16 minutes 17 seconds West with the north line of said out lot, a distance of 294.40 feet to an iron pin found, the place of beginning of the parcel herein described;

Thence, the following four (4) courses and distances:

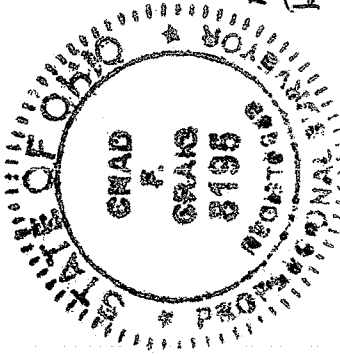
1. South 00 degrees 15 minutes 00 seconds East 176.63 feet to an iron pin set
2. North 88 degrees 39 minutes 05 seconds West 196.07 feet to an iron pin set
3. North 02 degrees 40 minutes 08 seconds West 165.36 feet to an iron pin set
4. With a curve to the right having a central angle of 01 degree 42 minutes 01 second, a radius of 6842.55 feet, an arc length of 203.07 feet, a chord bearing of North 88 degrees 04 minutes 13 seconds East and a chord length of 203.06 feet to the place of beginning containing 34,198 square feet according to survey by Chad F. Craig P.S. #8195 for Seiler and Craig Surveying, Inc. on February 28, 2012 but subject to all easements of record.

Bearings are based on an assumed meridian and are intended to be used for angular determination only.

NEW SPLIT
RICHLAND COUNTY
TAX MAP OFFICE

INITIAL FC DATE 3-8-11

dd-54



Chad F. Craig

Chad F. Craig P.S. #8195
Seiler and Craig Surveying, Inc.

APPROVED BY VILLAGE OF
BELLVILLE PLANNING COMMISSION
J. Fred Stull
J. FRED STULL, CHAIR
3-7-12

SEILER & CRAIG SURVEYING, INC.

Douglas C. Seiler, PS & Chad F. Craig, PS
52 1/2 North Main Street
Mansfield, Ohio 44902
419-525-3644 Fax 419-525-3696
www.seilerandcraig.com

**SURVEY DESCRIPTION
PARCEL "C"**

PART OUT LOT 47
VILLAGE OF BELLVILLE,
RICHLAND COUNTY, OHIO

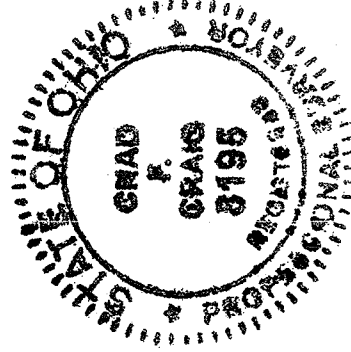
Situated in the Village of Bellville, County of Richland, State of Ohio and being known as part of Out Lot 47 in said village, and being more particularly described as follows:

Commencing at a Mag Nail spike found and accepted as marking the northeast corner of said out lot; Thence, North 87 degrees 16 minutes 17 seconds West with the north line of said out lot, a distance of 294.40 feet to an iron pin found; Thence, South 00 degrees 15 minutes 00 seconds East a distance of 176.63 feet to an iron pin set; Thence, North 88 degrees 39 minutes 05 seconds West 196.07 feet to an iron pin set the place of beginning of the parcel herein described;

Thence, the following five (5) courses and distances:

1. North 88 degrees 39 minutes 05 seconds West 194.35 feet to an iron pin found
2. North 01 degree 41 minutes 47 seconds West 50.00 feet to an iron pin set
3. With a curve to the right having a central angle of 87 degrees 58 minutes 16 seconds, a radius of 82.00 feet, an arc length of 125.90 feet, a chord bearing of North 42 degrees 17 minutes 21 seconds East and a chord length of 113.89 feet to an iron pin set
4. With a curve to the right having a central angle of 00 degrees 56 minutes 43 seconds, a radius of 6822.55 feet, an arc length of 112.56 feet, a chord bearing of North 86 degrees 44 minutes 50 seconds East and a chord length of 112.56 feet to an iron pin set
5. South 02 degrees 40 minutes 08 seconds East 145.36 feet to the place of beginning containing 25,190 square feet according to survey by Chad F. Craig P.S. #8195 for Seiler and Craig Surveying, Inc. on February 28, 2012, but subject to all easements of record.

Bearings are based on an assumed meridian and are intended to be used for angular determination only.



NEW SPLIT
RICHLAND COUNTY
TAX MAP OFFICE

FAX 3-8-11
INITIAL DATE

dd-54

Chad F. Craig
Chad F. Craig P.S. #8195
Seiler and Craig Surveying, Inc.

APPROVED BY VILLAGE OF
BELLVILLE PLANNING COMMISSION

J. Fred Smull
J. FRED SMULL, CHAIR.
3-7-12

SEILER & CRAIG SURVEYING, INC.

Douglas C. Seiler, PS & Chad F. Craig, PS
52 1/2 North Main Street
Mansfield, Ohio 44902
419-525-3644 Fax 419-525-3696
www.seilerandcraig.com

**SURVEY DESCRIPTION
PARCEL "D"**

PART OUT LOT 47
VILLAGE OF BELLVILLE,
RICHLAND COUNTY, OHIO

Situated in the Village of Bellville, County of Richland, State of Ohio and being known as part of Out Lot 47 in said village, and being more particularly described as follows:

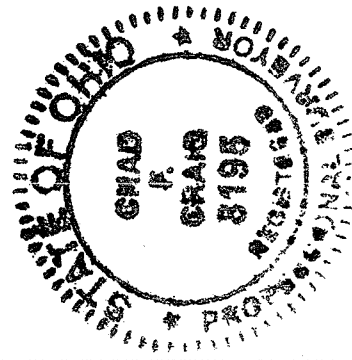
Commencing at a Mag Nail spike found and accepted as marking the northeast corner of said out lot; Thence, North 87 degrees 16 minutes 17 seconds West with the north line of said out lot, a distance of 294.40 feet to an iron pin found; Thence, with a curve to the left having a central angle of 03 degrees 02 minutes 10 seconds, a radius of 6842.55 feet, an arc length of 362.60 feet, a chord bearing of South 87 degrees 24 minutes 09 seconds West and a chord distance of 362.56 feet to an iron pin set; the place of beginning of the parcel herein described;

Thence, the following four (4) courses and distances:

1. With a curve to the left having a central angle of 63 degrees 22 minutes 46 seconds, a radius of 112.00 feet, an arc length of 123.89 feet, a chord bearing of South 29 degrees 59 minutes 36 seconds West and a chord distance of 117.67 feet to an iron pin set
2. North 01 degree 41 minutes 47 seconds West 97.25 feet to an iron pin set
3. North 85 degrees 28 minutes 52 seconds East 13.75 feet to an iron pin set
4. With a curve to the right having a central angle of 00 degrees 24 minutes 11 seconds, a radius of 6842.55 feet, an arc length of 48.13 feet, a chord bearing of North 85 degrees 40 minutes 58 seconds East and a chord length of 48.13 feet to the place of beginning containing 1675 square feet according to survey by Chad F. Craig P.S. #8195 for Seiler and Craig Surveying, Inc. on February 28, 2012 but subject to all easements of record.

Bearings are based on an assumed meridian and are intended to be used for angular determination only.

The grantees, his heirs and assigns do hereby covenant and agree that the parcel of land described in this instrument or any portion thereof does not constitute a principal building site under applicable zoning.



NEW SURVEY
OF EXISTING PARCEL
RICHLAND COUNTY
TAX MAP OFFICE

FAX 3-811
INITIAL DATE

dd-54

Chad F. Craig
Chad F. Craig P.S. #8195
Seiler and Craig Surveying, Inc.

APPROVED BY VILLAGE OF
BELLVILLE PLANNING COMMISSION
J. Fred Stull
J. FRED STULL, CHAIR.
3-7-12