



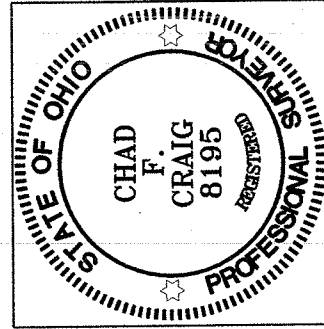
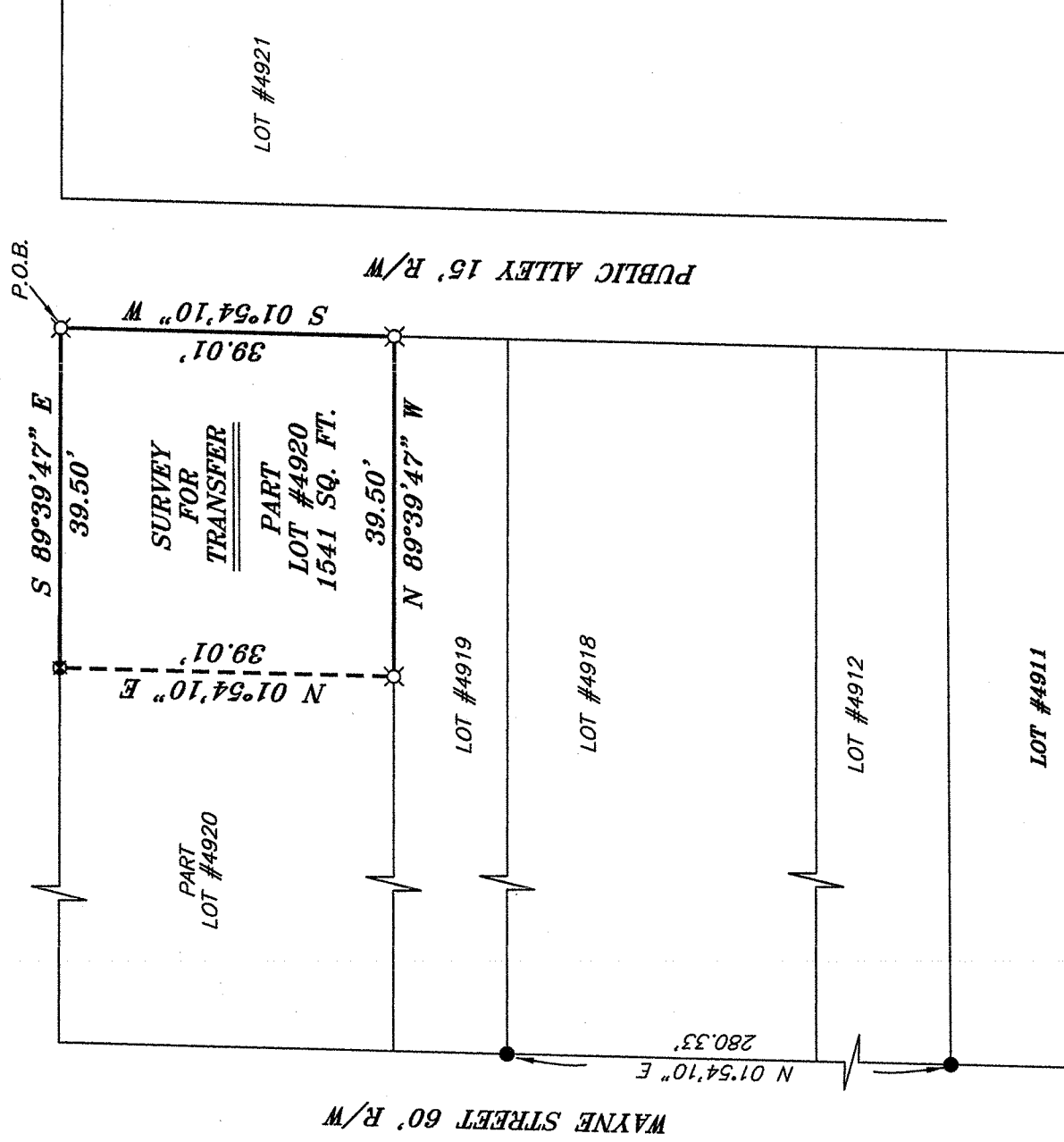
SCALE: 1" = 20'

BEARINGS ARE BASED ON AN ASSUMED MERIDIAN AND ARE INTENDED TO BE USED FOR ANGULAR DETERMINATION ONLY.

NORTH



SPRING STREET 60' R/W



NEW SURVEY
OF EXISTING PARCEL
RIGHTLAND COUNTY
TAX MAP OFFICE
EAK 2-21-12
INITIAL DATE
dd-45

LEGEND

- IRON PIN FOUND
- ⊠ CHISELED "X" SET IN CONCRETE
- ⊘ 2" MAG NAIL SPIKE SET
- ▲ RAILROAD SPIKE FOUND
- ⊗ 5/8" IRON PIN SET WITH CAP STAMPED "CRAIG 8195."

Chad F. Craig

SURVEY BY: CHAD F. CRAIG PS 8195
for SELLER & CRAIG SURVEYING INC.
52-1/2 NORTH MAIN STREET
MANSFIELD, OHIO 44902
(419) 525-3644
FAX (419) 525-3696

SURVEY PLAT FOR
PROPERTY TRANSFER

PART LOT #4920
CITY OF MANSFIELD
RICHLAND COUNTY, OHIO

Date: FEBRUARY 13, 2012 Scale: 1" = 20'

SPRING_ST_246

SEILER & CRAIG SURVEYING, INC.

Douglas C. Seiler, PS & Chad F. Craig, PS

52 1/2 North Main Street

Mansfield, Ohio 44902

419-525-3644 Fax: 419-525-3696

www.seilerandcraig.com

SURVEY DESCRIPTION

PART LOT #4920
CITY OF MANSFIELD,
RICHLAND COUNTY, OHIO

Situated in the City of Mansfield, County of Richland, State of Ohio and being known as part of Lot #4920 of the consecutively numbered lots in said city, and being more particularly described as follows:

Beginning for the same at an iron pin set on the northeast corner of said lot; Thence, South 01 degree 54 minutes 10 seconds West with the east line of said lot, a distance of 39.01 feet to an iron pin set on the southeast corner thereof;

Thence, North 89 degrees 39 minutes 50 seconds West with the south line of said lot, a distance of 39.50 feet to an iron pin set;

Thence, North 01 degree 54 minutes 10 seconds East a distance of 39.01 feet to a chiseled "X" set in concrete on the north line of said lot;

Thence, South 89 degrees 39 minutes 47 seconds East with said north line, a distance of 39.50 feet to the place of beginning containing 1541 square feet according to survey by Chad F. Craig P.S. #8195 for Seiler and Craig Surveying, Inc. on February 13, 2012 but subject to all easements of record.

Bearings are based on an assumed meridian and are intended to be used for angular determination only.

NEW SURVEY
OF EXISTING PARCEL
RICHLAND COUNTY
TAX MAP OFFICE

FAK 2-21-12
INITIAL DATE
dd-45

Chad F. Craig

Chad F. Craig P.S. #8195
Seiler and Craig Surveying, Inc.