

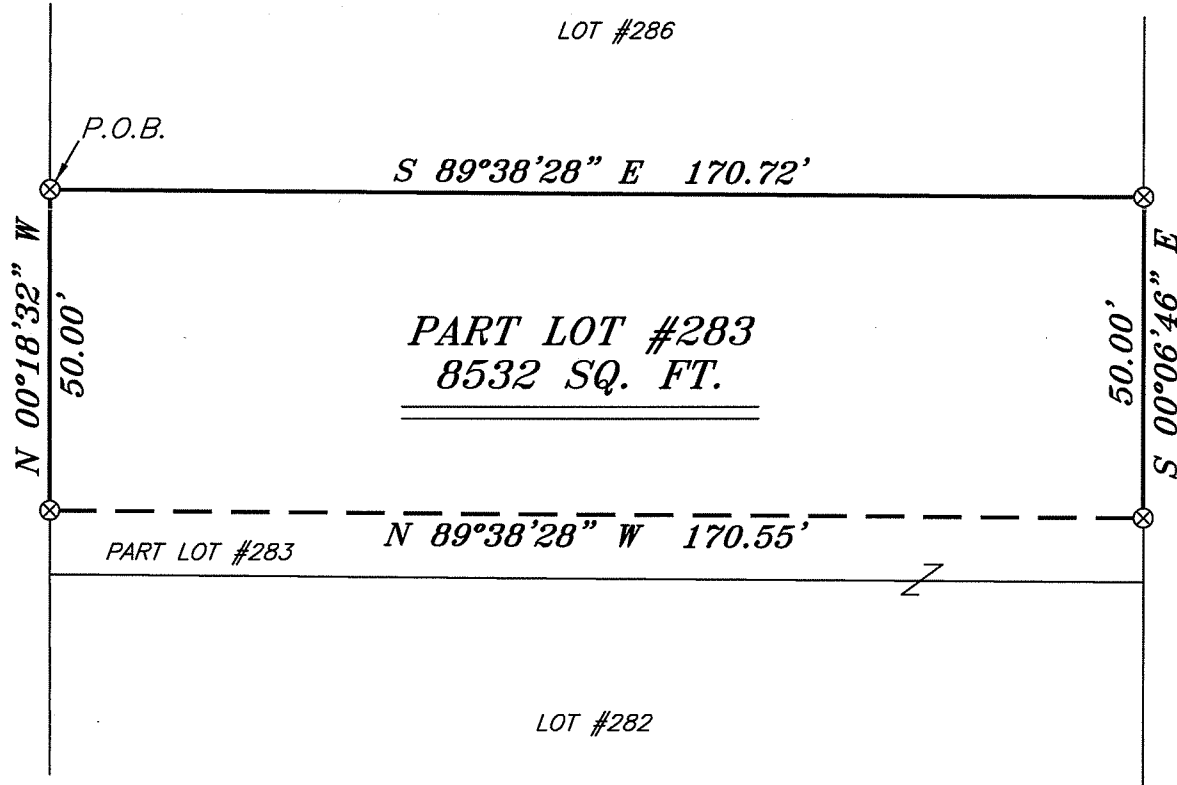
NORTH



BEARINGS ARE BASED ON AN ASSUMED MERIDIAN AND ARE INTENDED TO BE USED FOR ANGULAR DETERMINATION ONLY

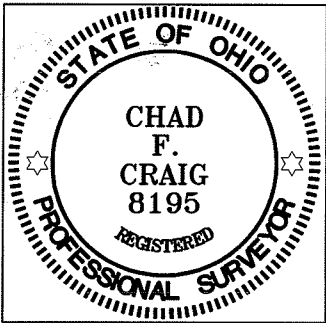
NORTH MAIN STREET 60' R/W

ACCOMMODATION ALLEY 20' R/W



LEGEND

- IRON PIN FOUND
- ⊕ 2" MAG NAIL SPIKE SET
- ⊗ 3" SURVEY MARKER SET
- △ RAILROAD SPIKE SET
- ▲ RAILROAD SPIKE FOUND
- ⊗ 5/8" IRON PIN SET WITH CAP STAMPED "CRAIG 8195"



Chad F. Craig

SURVEY BY: CHAD F. CRAIG P.S. #8195
 for SEILER & CRAIG SURVEYING INC.
 52-1/2 NORTH MAIN STREET
 MANSFIELD, OHIO 44902
 (419) 525-3644
 FAX (419) 525-3696

NEW SURVEY
 OF EXISTING PARCEL
 RICHLAND COUNTY
 TAX MAP OFFICE

EAK 1-12-12
 INITIAL DATE

dd-6

SURVEY PLAT FOR	
PROPERTY TRANSFER	
PART LOT #283	
CITY OF MANSFIELD	
RICHLAND COUNTY, OHIO	
DATE: JANUARY 9, 2012	SCALE: 1"=30'
HOME_KITCHEN	

SEILER & CRAIG SURVEYING, INC.

Douglas C. Seiler, PS & Chad F. Craig, PS

52 ½ North Main Street

Mansfield, Ohio 44902

419-525-3644 Fax: 419-525-3696

www.seilerandcraig.com

SURVEY DESCRIPTION

PART LOT #283
CITY OF MANSFIELD,
RICHLAND COUNTY, OHIO

Situated in the City of Mansfield, County of Richland, State of Ohio and being known as part of Lot # 283 of the consecutively numbered lots in said city, and being more particularly described as follows:

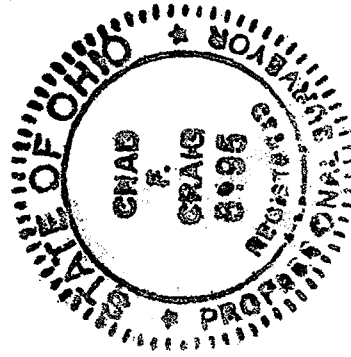
Beginning for the same at a 3 inch survey marker set on the northwest corner of said lot; Thence, South 89 degrees 38 minutes 28 seconds East with the north line of said lot, a distance of 170.72 feet to a 3 inch survey marker set on the northeast corner thereof;

Thence, South 00 degrees 06 minutes 46 seconds East with the east line of said lot, a distance of 50.00 feet to a 3 inch survey marker set

Thence, North 89 degrees 38 minutes 28 seconds West a distance of 170.55 feet to a 3 inch survey marker set on the west line of said lot;

Thence, North 00 degrees 18 minutes 32 seconds West with said west line, a distance of 50.00 feet to the place of beginning containing 8,532 square feet according to survey by Chad F. Craig P.S. #8195 for Seiler and Craig Surveying, Inc. on January 9, 2012 but subject to all easements of record.

Bearings are based on an assumed meridian and are intended to be used for angular determination only.



Chad F. Craig

Chad F. Craig P.S. #8195
Seiler and Craig Surveying, Inc.

NEW SURVEY
OF EXISTING PARCEL
RICHLAND COUNTY
TAX MAP OFFICE

EAK 1-17-17
INITIAL DATE

ddl-6