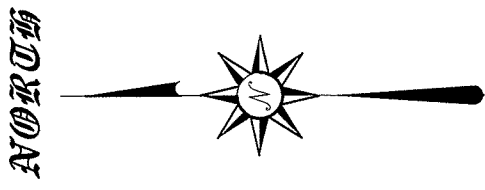
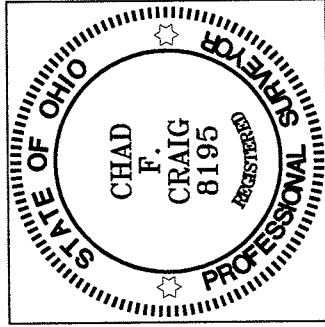
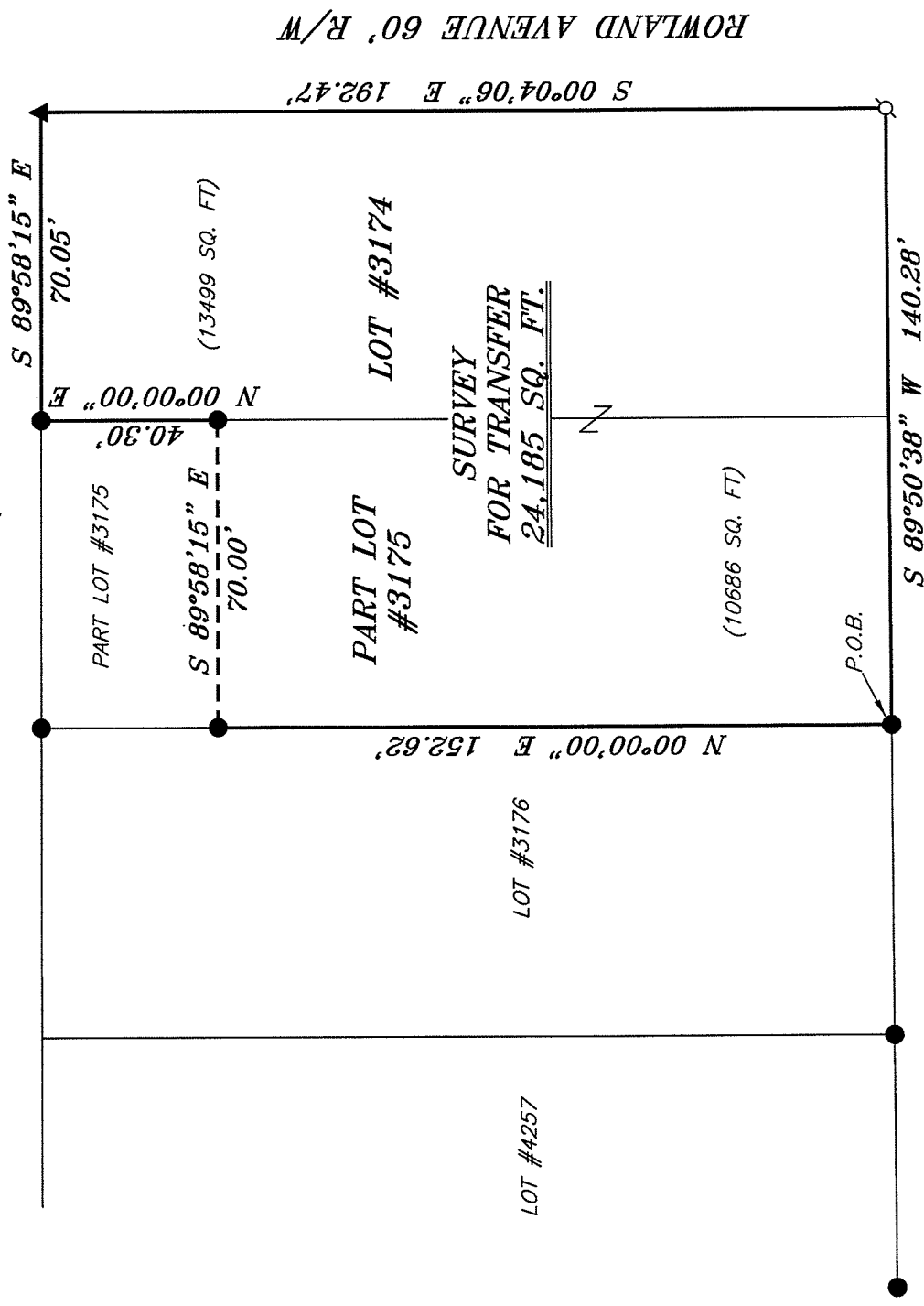




BEARINGS ARE BASED ON AN ASSUMED MERIDIAN AND ARE INTENDED TO BE USED FOR ANGULAR DETERMINATION ONLY.



BISSMAN COURT 20' R/W



NEW SURVEY
 OF EXISTING PARCEL
 RICHLAND COUNTY
 TAX MAP OFFICE
EAK INITIAL DATE
12-27-10
BB-306

LEGEND

- IRON PIN FOUND
- ⊘ 2" MAG NAIL SPIKE SET
- ▲ RAILROAD SPIKE FOUND
- ⊙ 2" MAG NAIL SPIKE SET

Chad F. Craig

SURVEY BY: CHAD F. CRAIG PS 8195
 for SEILER & CRAIG SURVEYING INC.
 52-1/2 NORTH MAIN STREET
 MANSFIELD, OHIO 44902
 (419) 525-3644
 FAX (419) 525-3696

SURVEY PLAT FOR
PROPERTY TRANSFER
LOT #3174 AND PART LOT #3175
CITY OF MANSFIELD
RICHLAND COUNTY, OHIO
Date: DECEMBER 20, 2010 Scale: 1" = 40'
PAW_500.DWG

SEILER & CRAIG SURVEYING, INC.

Douglas C. Seiler, PS & Chad F. Craig, PS
52 1/2 North Main Street
Mansfield, Ohio 44902
419-525-3644 Fax: 419-525-3696
www.seilerandcraig.com

SURVEY DESCRIPTION

NEW SURVEY
OF EXISTING PARCEL
RICHLAND COUNTY
TAX MAP OFFICE

EAK 12ZZ10
INITIAL DATE
BB-306

LOT #3174 AND
PART LOT #3175
CITY OF MANSFIELD,
RICHLAND COUNTY, OHIO

Situated in the City of Mansfield, County of Richland, State of Ohio and being known as Lot #3174 and part of Lot #3175 of the consecutively numbered lots in said city, and being more particularly described as follows:

Beginning for the same at an iron pin found and accepted as marking the southwest corner of Lot #3175; Thence, North 00 degrees 00 minutes 00 seconds East with the west line of said lot, a distance of 152.62 feet to an iron pin found;

Thence, South 89 degrees 58 minutes 15 seconds East a distance of 70.00 to an iron pin found on the west line of Lot #3174, the same being the east line of said Lot #3175;

Thence, North 00 degrees 00 minutes 00 seconds East with the west line of said Lot #3174, a distance of 40.30 feet to an iron pin found on the northwest corner thereof;

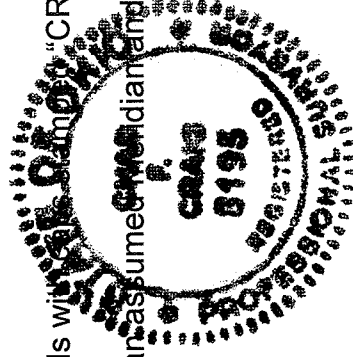
Thence, South 89 degrees 58 minutes 15 seconds East with the north line of said lot, a distance of 70.05 feet to a railroad spike found on the northeast corner thereof;

Thence, South 00 degrees 04 minutes 06 seconds East with the east line of said lot, a distance of 192.47 feet to a 2 inch Mag Nail spike set on the southeast corner thereof;

Thence, South 89 degrees 50 minutes 38 seconds West with the south line of said lot and the westerly prolongation thereof, a distance of 140.28 feet to the place of beginning, containing a total of 24,185 square feet of which 13,499 square feet are located within Lot #3174 and 10,686 square feet are located within part of Lot #3175 according to survey by Chad F. Craig P.S. #8195 for Seiler and Craig Surveying, Inc. on December 20, 2010 but subject to all easements of record.

Iron pins set are 5/8" rods with "CRAIG 8195".

Bearings are based on an assumed meridian and are intended to be used for angular determination only



Chad F. Craig

Chad F. Craig P.S. #8195
Seiler and Craig Surveying, Inc.