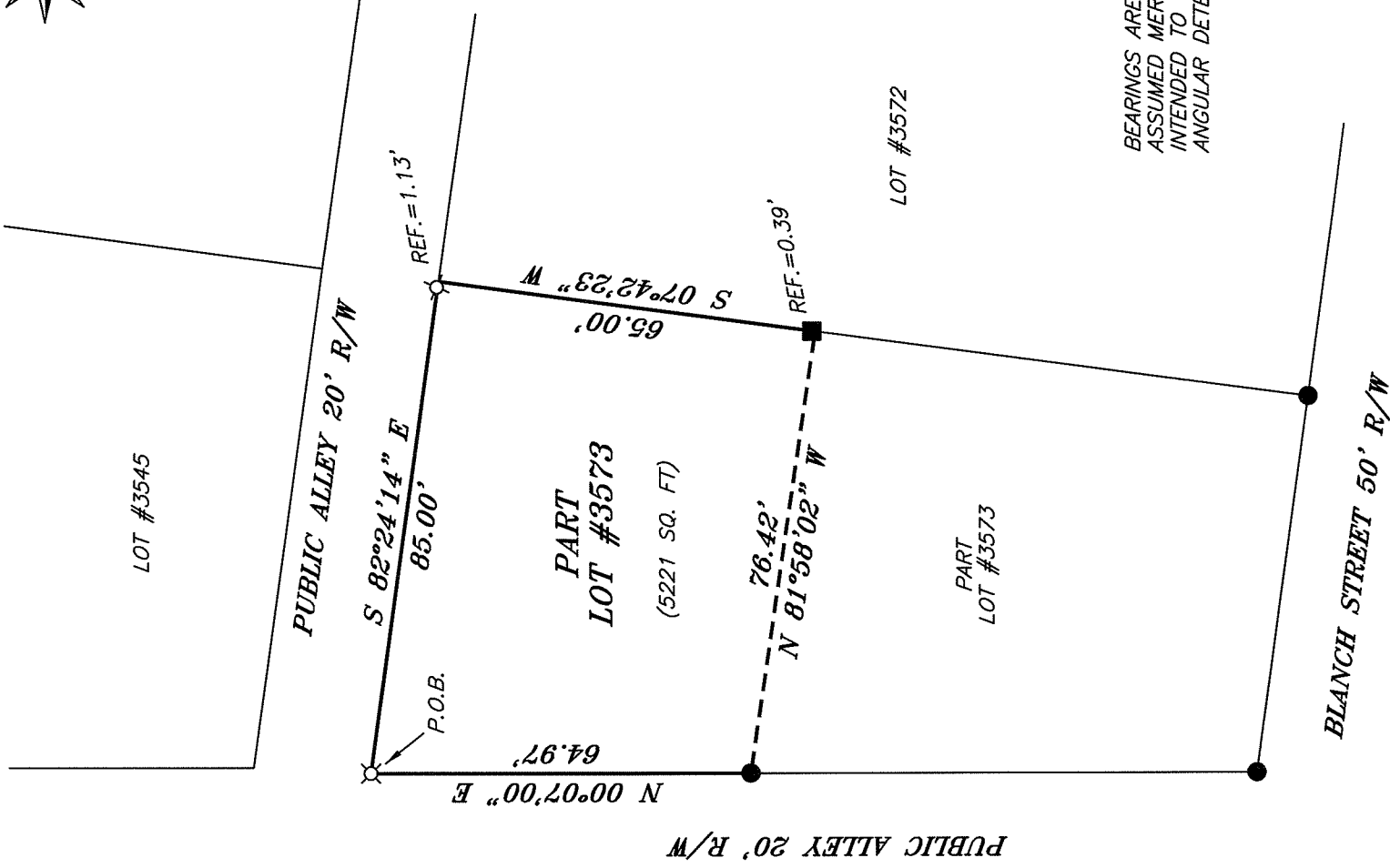
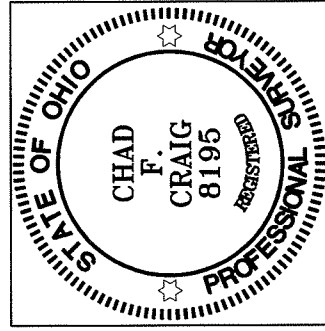


NORTH



BEARINGS ARE BASED ON AN ASSUMED MERIDIAN AND ARE INTENDED TO BE USED FOR ANGULAR DETERMINATION ONLY.



LEGEND

- IRON PIN FOUND
- ⊕ 2 1/2 METAL FENCE POST FOUND
- SURVEY SPIKE FOUND
- ⊗ 5/8" IRON PIN SET WITH CAP STAMPED "SEILER AND CRAIG, INC."

NEW SURVEY OF EXISTING PARCEL RICHLAND COUNTY, OHIO TAX MAP OFFICE

EAK INITIAL DATE
BB-305 INITIAL DATE

Chad F. Craig

SURVEY BY: CHAD F. CRAIG PS 8195
 for SEILER & CRAIG SURVEYING INC.
 52-1/2 NORTH MAIN STREET
 MANSFIELD, OHIO 44902
 (419) 525-3644
 FAX (419) 525-3696

SURVEY PLAT FOR
PROPERTY TRANSFER
PART LOT #3573 CITY OF MANSFIELD RICHLAND COUNTY, OHIO
Date: DECEMBER 20, 2010 Scale: 1" = 30'
BLANCHREAR_164.DWG

SEILER & CRAIG SURVEYING, INC.

Douglas C. Seiler, PS & Chad F. Craig, PS

52 ½ North Main Street

Mansfield, Ohio 44902

419-525-3644 Fax: 419-525-3696

www.seilerandcraig.com

SURVEY DESCRIPTION

PART LOT #3573
CITY OF MANSFIELD,
RICHLAND COUNTY, OHIO

Situated in the City of Mansfield, County of Richland, State of Ohio and being known as part of Lot #3573 of the consecutively numbered lots in said city, and being more particularly described as follows:

Beginning for the same at an iron pin set marking the northwest corner of said lot; Thence, South 82 degrees 24 minutes 14 seconds East with the north line of said lot, passing through an iron pins set for reference at 83.87 feet, a total distance of 85.00 feet to the northeast corner thereof;

Thence, South 07 degrees 42 minutes 23 seconds West with the east line of said lot, passing through a 2 ½ inch metal post at 64.61 feet, a total distance of 65.00 feet to a point;

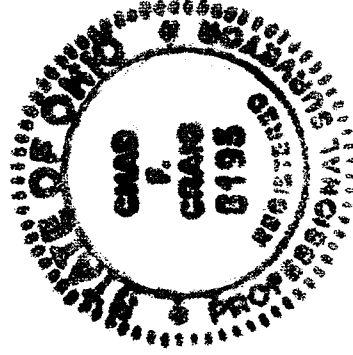
Thence, North 81 degrees 58 minutes 02 seconds West a distance of 76.42 feet to an iron pin found on the west line of said lot;

Thence, North 00 degrees 07 minutes 00 seconds East with said west line, a distance of 64.97 feet to the place of beginning, containing a total of 5221 square feet according to survey by Chad F. Craig P. S. #8195 for Seiler and Craig Surveying, Inc. on December 20, 2010 but subject to all easements of record.

Iron pins set are 5/8" rods with caps stamped "CRAIG 8195".

Bearings are based on an assumed meridian and are intended to be used for angular determination only

NEW SURVEY
OF EXISTING PARCEL
RICHLAND COUNTY
TAX MAP OFFICE
INITIAL **BB-305**
DATE **12-22-10**



Chad F. Craig P. S. #8195
Seiler and Craig Surveying, Inc.