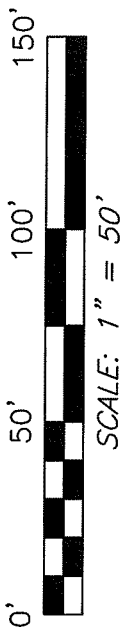


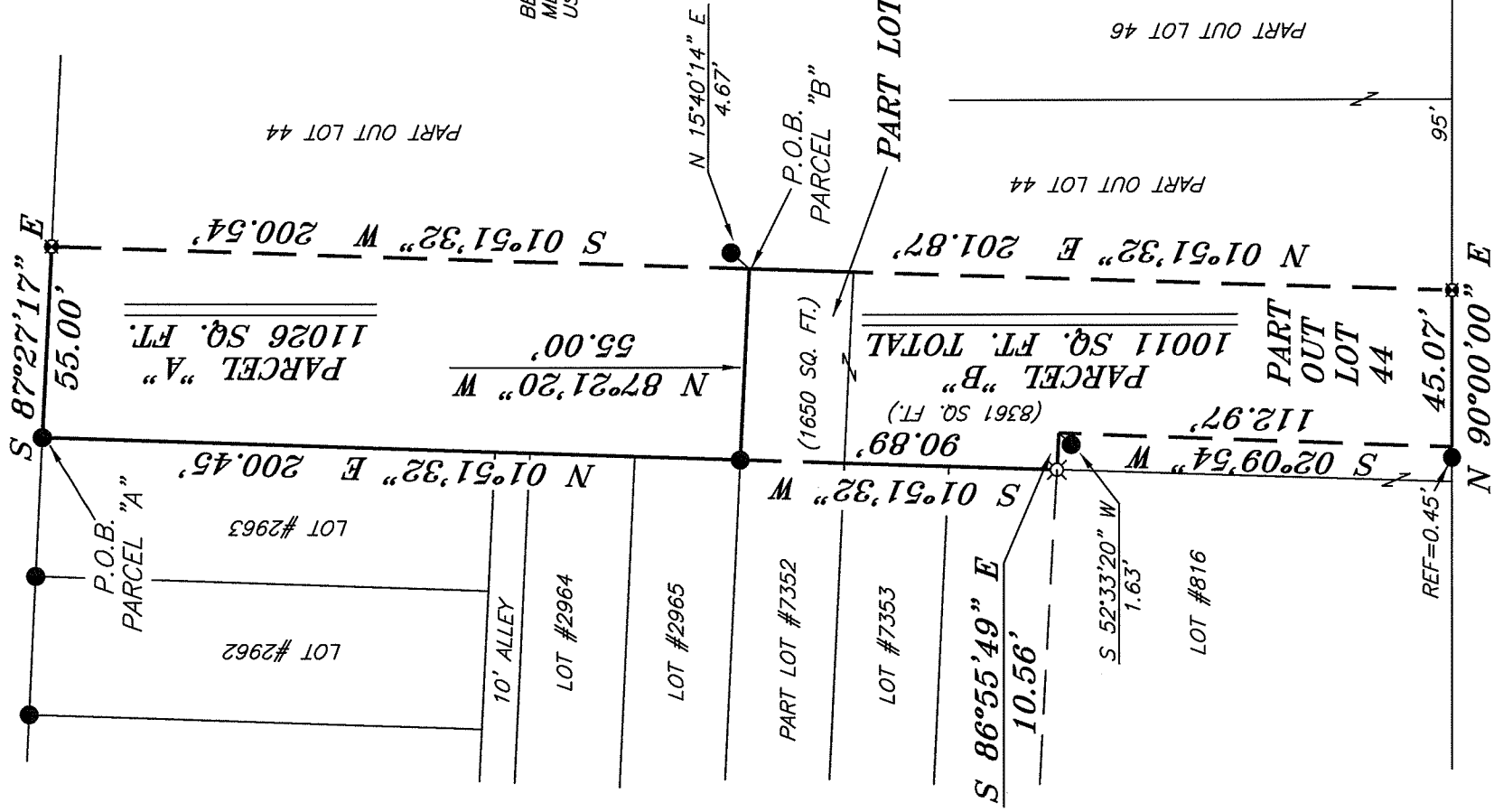
THIRD STREET 60' R/W



NORTH



BEARINGS ARE BASED ON AN ASSUMED MERIDIAN AND ARE INTENDED TO BE USED FOR ANGULAR DETERMINATION ONLY



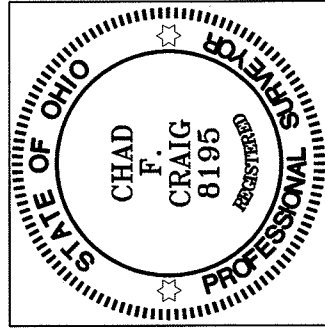
PARK AVENUE WEST

LEGEND

- IRON PIN FOUND
- 2" MAG NAIL SPIKE SET
- ⊗ SURVEY MARKER SET
- ▲ RAILROAD SPIKE FOUND
- ⊗ 5/8" IRON PIN SET WITH CAP STAMPED "CRAIG 8195"

NEW SURVEY
OF EXISTING PARCEL
RICHLAND COUNTY
TAX MAP OFFICE

EAK 12-20-10
INITIAL DATE
BB-304



Chad F. Craig

SURVEY BY:
CHAD F. CRAIG P.S. #8195
for SELLER & CRAIG SURVEYING INC.
52-1/2 NORTH MAIN STREET
MANSFIELD, OHIO 44902
(419) 525-3644
FAX (419) 525-3696

SURVEY PLAT FOR
PROPERTY TRANSFER
PART LOT #7352 & PART OUT LOT 44
CITY OF MANSFIELD
RICHLAND COUNTY, OHIO
DATE: DECEMBER 20, 2010 SCALE: 1"=50'
PAW-BAPTIST

SEILER & CRAIG SURVEYING, INC.

Douglas C. Seiler, PS & Chad F. Craig, PS

52 ½ North Main Street

Mansfield, Ohio 44902

419-525-3644 Fax: 419-525-3696

www.seilerandcraig.com

SURVEY DESCRIPTION

PARCEL "A"

**PART OUTLOT #44
CITY OF MANSFIELD,
RICHLAND COUNTY, OHIO**

Situated in the City of Mansfield, County of Richland, State of Ohio and being known as part of Outlot #44 in said city, and being more particularly described as follows:

Beginning for the same at an iron pin found and accepted as marking the northwest corner of Outlot #44, Thence, South 87 degrees 27 minutes 17 seconds East with the north line of said outlot a distance of 55.00 feet to a survey marker set;

Thence, South 01 degree 51 minutes 32 seconds West a distance of 200.54 feet to a point marking the northeast corner of Lot #7352, referenced by an iron pin found on a bearing of North 15 degrees 40 minutes 14 seconds East a distance of 4.67 feet;

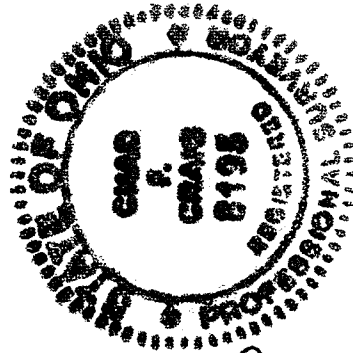
Thence, North 87 degrees 21 minutes 20 seconds West with the north line of said lot a distance of 55.00 feet to an iron pin found on the west line of said outlot;

Thence, North 01 degree 51 minutes 32 seconds East with the said west line a distance of 200.45 feet to the place of beginning, containing a total of 11026 square feet according to survey by Chad F. Craig P.S. #8195 for Seiler and Craig Surveying, Inc. on December 20, 2010 but subject to all right of ways and easements of record.

Iron pins set are 5/8" rods with caps stamped "CRAIG 8195".

Bearings are based on an assumed meridian and are intended to be used for angular determination only.

NEW SURVEY
OF EXISTING PARCEL
RICHLAND COUNTY
TAX MAP OFFICE
EAK INITIAL
12-22-10 DATE
BB-304



Chad F. Craig

Chad F. Craig P.S. #8195
for Seiler and Craig Surveying, Inc.

SEILER & CRAIG SURVEYING, INC.

Douglas C. Seiler, PS & Chad F. Craig, PS
52 1/2 North Main Street
Mansfield, Ohio 44902
419-525-3644 Fax 419-525-3696
www.seilerandcraig.com

SURVEY DESCRIPTION

PARCEL "B"

PART OUTLOT #44 & PART LOT #7352
CITY OF MANSFIELD,
RICHLAND COUNTY, OHIO

Situated in the City of Mansfield, County of Richland, State of Ohio and being known as part of Outlot #44 and part of Lot #7352 of the consecutive numbered lots in said city, and being more particularly described as follows:

Beginning for the same at a point marking the northeast corner of Lot #7352, referenced by an iron pin found on a bearing of North 15 degrees 40 minutes 14 seconds East a distance of 4.67 feet, Thence, North 87 degrees 21 minutes 20 seconds West with the north line of said lot a distance of 55.00 feet to an iron pin found;

Thence, South 01 degrees 51 minute 32 seconds West a distance of 90.89 feet to an iron pin set on the west line of Outlot #44;

Thence, South 86 degrees 55 minutes 49 seconds East a distance of 10.56 feet to a point referenced by an iron pin found on a bearing of South 52 degrees 33 minutes 20 seconds West a distance of 1.63 feet;

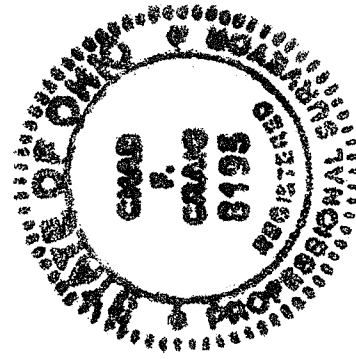
Thence, South 02 degrees 09 minutes 54 seconds West a distance of 112.97 feet to a point on the south line of said outlot referenced by an iron pin found on a bearing of South 90 degrees 00 minutes 00 seconds West a distance of 0.45 feet;

Thence, North 90 degrees 00 minutes 00 seconds East with said south line a distance of 45.07 feet to a survey marker set;

Thence, North 01 degree 51 minutes 32 seconds East a distance of 201.87 feet to the place of beginning, containing a total of 10011 square feet of which 8361 square feet are located in part of Outlot #44 and 1650 square feet are located in part of Lot #7352, according to survey by Chad F. Craig P.S. #8195 for Seiler and Craig Surveying, Inc. on December 20, 2010 but subject to all right of ways and easements of record.

Iron pins set are 5/8" rods with caps stamped "CRAIG 8195".

Bearings are based on an assumed meridian and are intended to be used for angular determination only.



NEW SURVEY
OF EXISTING PARCEL
RICHLAND COUNTY
TAX MAP OFFICE
EAX 12-22-10
INITIAL DATE
BB-304

Chad F. Craig

Chad F. Craig P.S. #8195
for Seiler and Craig Surveying, Inc.