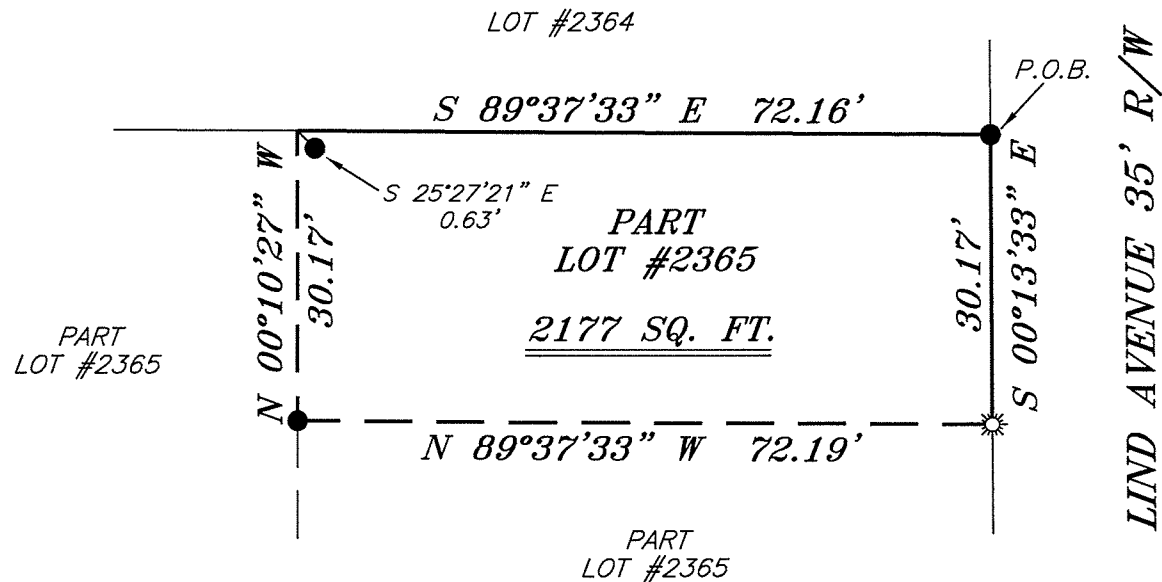


BEARINGS ARE BASED ON SURVEY R-54 ON FILE AT THE RICHLAND COUNTY TAX MAP OFFICE AND ARE INTENDED TO BE USED FOR ANGULAR DETERMINATION ONLY

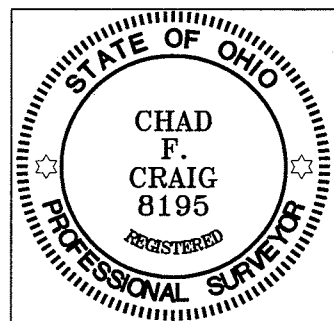
NORTH



**LEGEND**

- IRON PIN FOUND
- ☼ DRILL HOLE FOUND IN CONCRETE
- △ RAILROAD SPIKE SET
- ▲ RAILROAD SPIKE FOUND
- ⊗ 5/8" IRON PIN SET WITH CAP STAMPED "CRAIG 8195"

*Chad F. Craig*  
 SURVEY BY: CHAD F. CRAIG P.S. #8195  
 for SEILER & CRAIG SURVEYING INC.  
 52-1/2 NORTH MAIN STREET  
 MANSFIELD, OHIO 44902  
 (419) 525-3644  
 FAX (419) 525-3696



NEW SURVEY  
 OF EXISTING PARCEL  
 RICHLAND COUNTY  
 TAX MAP OFFICE  
 EAK 12-20-10  
 INITIAL DATE  
 BB-301

SURVEY PLAT FOR	
PROPERTY TRANSFER	
PART LOT #2365 CITY OF MANSFIELD RICHLAND COUNTY, OHIO	
DATE: DECEMBER 16, 2010	SCALE: 1"=20'
LINDAVE_118	

**SEILER & CRAIG SURVEYING, INC.**

*Douglas C. Seiler, PS & Chad F. Craig, PS*

*52 1/2 North Main Street*

*Mansfield, Ohio 44902*

*419-525-3644 Fax: 419-525-3696*

*www.seilerandcraig.com*

**SURVEY DESCRIPTION**

PART LOT #2365  
CITY OF MANSFIELD,  
RICHLAND COUNTY, OHIO

Situated in the City of Mansfield, County of Richland, State of Ohio and being known as part of Lot #2365 of the consecutively numbered lots in said city, and being more particularly described as follows:

Beginning for the same at an iron pin found and accepted as marking the northeast corner of Lot #2365, Thence, South 00 degrees 13 minutes 33 seconds East with the east line of said lot a distance of 30.17 feet to a drill hole in concrete found;

Thence, North 89 degrees 37 minutes 33 seconds West a distance of 72.19 feet to an iron pin found;

Thence, North 00 degrees 10 minutes 27 seconds West a distance of 30.17 feet to a point on the north line of said lot referenced by an iron pin found on a bearing of South 25 degrees 27 minutes 21 seconds East and at a distance of 0.63 feet;

Thence, South 89 degrees 37 minutes 33 seconds East with the said north line a distance of 72.16 feet to the place of beginning, containing a total of 2177 square feet according to survey by Chad F. Craig P.S. #8195 for Seiler and Craig Surveying, Inc. on December 16, 2010 but subject to all right of ways and easements of record.

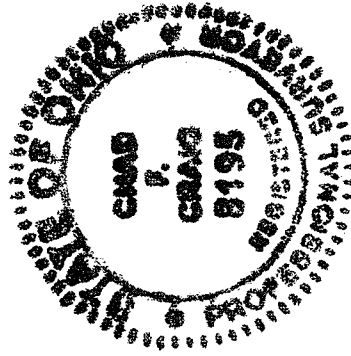
Iron pins set are 5/8" rods with caps stamped "CRAIG 8195".

Bearings are based on an assumed meridian and are intended to be used for angular determination only.

NEW SURVEY  
OF EXISTING PARCEL  
RICHLAND COUNTY  
TAX MAP OFFICE

INITIAL EAK DATE 17-20-10

BB-301



*Chad F. Craig*

Chad F. Craig P.S. #8195

for Seiler and Craig Surveying, Inc.