

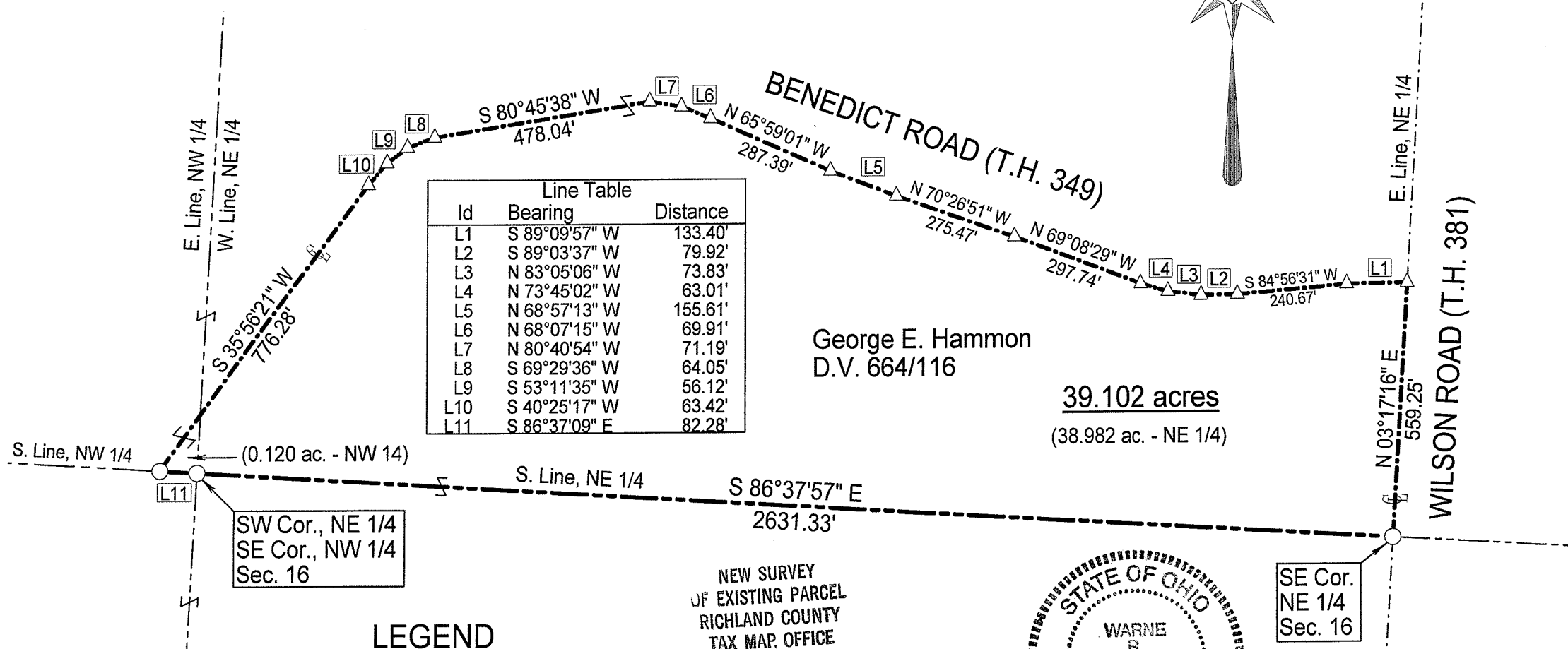
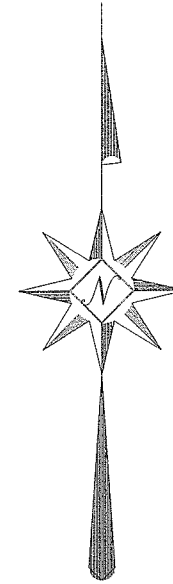
# SURVEY PLAT

Parts NE 1/4 and NW 1/4 - Section 16  
 Worthington Township, T-21, R-17  
 Richland County, Ohio

Scale : 1" = 300'



Bearings are based on Survey F-4-122.



## LEGEND

- Iron pin found
- △ Railroad spike found

NEW SURVEY  
 OF EXISTING PARCEL  
 RICHLAND COUNTY  
 TAX MAP OFFICE

**EAK** 12-20-10  
 INITIAL DATE  
**BB-300**



*Warne R. Clancy*  
 Warne R. Clancy P.S. #7178

DATE: 12/15/10  
 JOB NO.: W121510

**SURVEY DESCRIPTION**

**Parts NE ¼ and NW ¼ - Section 16  
Worthington Township, T-21, R-17  
Richland County, Ohio**

Situated in the Township of Worthington, County of Richland, State of Ohio, and being parts of the Northeast Quarter and the Northwest Quarter of Section 16 of Township 21 of Range 17, more particularly described as follows:

Beginning for the same at an iron pin found marking the southeast corner of the said northeast quarter; Thence, North 03 degrees 17 minutes 16 seconds East with the east line of said quarter, the same being the centerline of Wilson Road (T.H. 381), a distance of 559.25 feet to a Railroad spike found marking its intersection with the centerline of Benedict Road (T.H. 349);

Thence, with the said Benedict Road centerline, the following Sixteen (16) courses:

1. South 89 degrees 09 minutes 57 seconds West, a distance of 133.40 feet to a Railroad spike found;
2. South 84 degrees 56 minutes 31 seconds West, a distance of 240.67 feet to a Railroad spike found;
3. South 89 degrees 03 minutes 37 seconds West, a distance of 79.92 feet to a Railroad spike found;
4. North 83 degrees 05 minutes 06 seconds West, a distance of 73.83 feet to a Railroad spike found;
5. North 73 degrees 45 minutes 02 seconds West, a distance of 63.01 feet to a Railroad spike found;
6. North 69 degrees 08 minutes 29 seconds West, a distance of 297.74 feet to a Railroad spike found;
7. North 70 degrees 26 minutes 51 seconds West, a distance of 275.47 feet to a Railroad spike found;
8. North 68 degrees 57 minutes 13 seconds West, a distance of 155.61 feet to a Railroad spike found;
9. North 65 degrees 59 minutes 01 seconds West, a distance of 287.39 feet to a Railroad spike found;
10. North 68 degrees 07 minutes 15 seconds West, a distance of 69.91 feet to a Railroad spike found;
11. North 80 degrees 40 minutes 54 seconds West, a distance of 71.19 feet to a Railroad spike found;
12. South 80 degrees 45 minutes 38 seconds West, a distance of 478.04 feet to a Railroad spike found;
13. South 69 degrees 29 minutes 36 seconds West, a distance of 64.05 feet to a Railroad spike found;
14. South 53 degrees 11 minutes 35 seconds West, a distance of 56.12 feet to a Railroad spike found;

15. South 40 degrees 25 minutes 17 seconds West, a distance of 63.42 feet to a Railroad spike found;
16. South 35 degrees 56 minutes 21 seconds West, a distance of 776.28 feet to an Iron pin found on the south line of said northwest quarter;

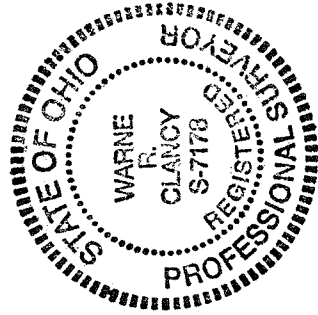
Thence, South 86 degrees 37 minutes 09 seconds East with said south line, a distance of 82.28 feet to an iron pin found marking the southeast corner of said northwest quarter, the same being the southwest corner of the said northeast quarter;

Thence, South 86 degrees 37 minutes 57 seconds East with the south line of said northeast quarter, a distance of 2631.33 feet to the Place of Beginning, containing 39.102 acres, of which 38.982 acres lie in the said part of the northeast quarter, and 0.120 in the said part of the northwest quarter, according to survey by Warne R. Clancy, Professional Surveyor #7178, on December 15, 2010.

Bearings are based on Survey F-4-122.

NEW SURVEY  
OF EXISTING PARCEL  
RICHLAND COUNTY  
TAX MAP OFFICE

WAR 12-20-10  
INITIAL DATE  
BB-300



*Warne R. Clancy*  
Warne R. Clancy  
P.S. 7178