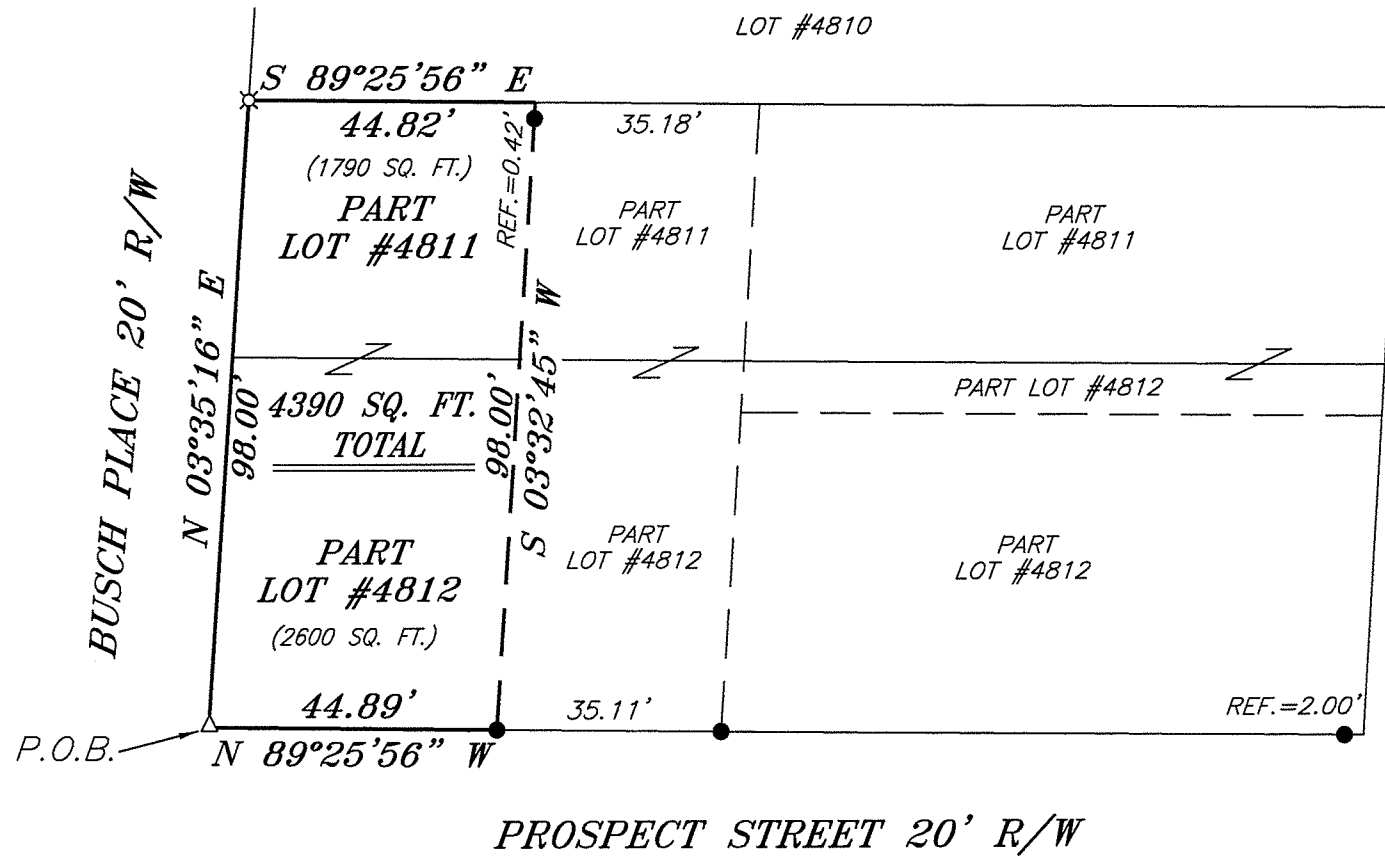


BEARINGS ARE BASED ON SURVEY M-328 ON FILE AT THE RICHLAND COUNTY TAX MAP OFFICE AND ARE INTENDED TO BE USED FOR ANGULAR DETERMINATION ONLY

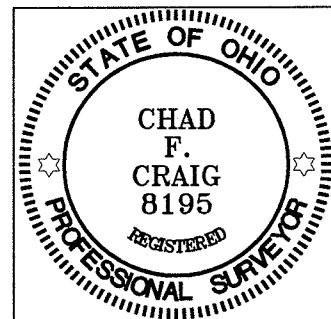
NORTH



LEGEND

- IRON PIN FOUND
- ⊗ MAG NAIL SPIKE SET
- △ RAILROAD SPIKE SET
- ⊗ 5/8" IRON PIN SET WITH CAP STAMPED "CRAIG 8195"

Chad Craig
 SURVEY BY: CHAD F. CRAIG P.S. #8195
 for SEILER & CRAIG SURVEYING INC.
 52-1/2 NORTH MAIN STREET
 MANSFIELD, OHIO 44902
 (419) 525-3644
 FAX (419) 525-3696



NEW SURVEY
 OF EXISTING PARCEL
 RICHLAND COUNTY
 TAX MAP OFFICE
 EAK 12-20-10
 INITIAL DATE
 BB-299

SURVEY PLAT FOR	
PROPERTY TRANSFER	
PART OF LOTS #4811 & #4812 CITY OF MANSFIELD RICHLAND COUNTY, OHIO	
DATE: DECEMBER 14, 2010	SCALE: 1"=30'
PROSPECT_25	

SEILER & CRAIG SURVEYING, INC.

Douglas C. Seiler, PS & Chad F. Craig, PS

52 1/2 North Main Street

Mansfield, Ohio 44902

419-525-3644 Fax: 419-525-3696

www.seilerandcraig.com

SURVEY DESCRIPTION

PART LOTS #4811 & #4812
CITY OF MANSFIELD,
RICHLAND COUNTY, OHIO

Situated in the City of Mansfield, County of Richland, State of Ohio and being known as part of Lots #4811 and #4812 of the consecutively numbered lots in said city, and being more particularly described as follows:

Beginning for the same at a railroad spike set marking the southwest corner of Lot #4812, Thence North 03 degrees 35 minutes 16 seconds East with the west line of said lot and the northerly prolongation thereof a distance of 98.00 feet to an iron pin set marking the northwest corner of Lot #4811;

Thence, South 89 degrees 25 minutes 56 seconds East with the north line of said lot a distance of 44.82 feet to a point referenced by an iron pin found on a bearing of South 03 degrees 32 minutes 45 seconds West and at a distance of 0.42 feet;

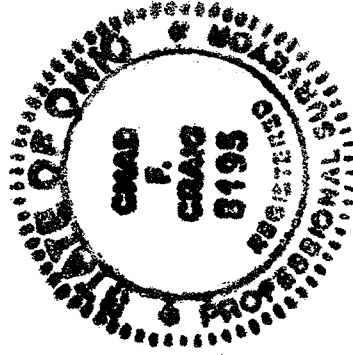
Thence, South 03 degrees 32 minutes 45 seconds West passing through said iron pin found, a total distance of 98.00 feet to an iron pin found on the south line of Lot #4812;

Thence, North 89 degrees 25 minutes 56 seconds West with said south line a distance of 44.89 feet to the place of beginning, containing a total of 4390 square feet of which 1790 square feet are located within Part Lot #4811 and 2600 square feet are located within Part Lot #4812, according to survey by Chad F. Craig P.S. #8195 for Seiler and Craig Surveying, Inc. on December 14, 2010, but subject to all right of ways and easements of record.

Iron pins set are 5/8" rods with caps stamped "CRAIG 8195".

Bearings are based on an assumed meridian and are intended to be used for angular determination only.

NEW SURVEY
OF EXISTING PARCEL
RICHLAND COUNTY
TAX MAP OFFICE
INITIAL EPK DATE 12-20-10
BB-299



Chad F. Craig

Chad F. Craig P.S. #8195

for Seiler and Craig Surveying, Inc.