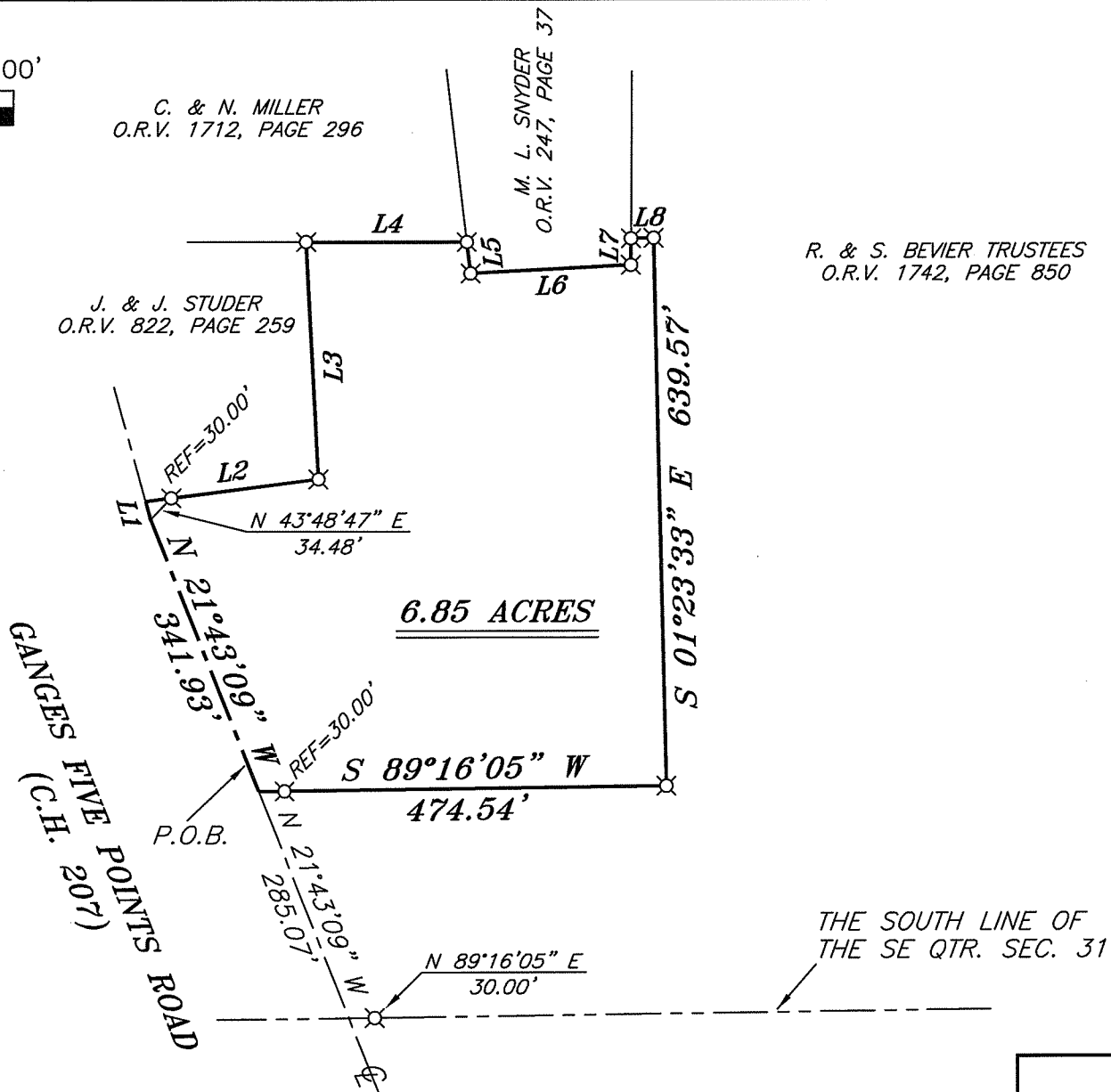


LINE	BEARING	DISTANCE
L1	N 15°36'10" W	21.89'
L2	N 82°43'43" E	203.27'
L3	N 03°09'08" W	277.17'
L4	S 89°53'35" E	187.58'
L5	S 06°55'45" E	36.74'
L6	N 87°04'15" E	186.98'
L7	N 00°04'03" E	30.95'
L8	N 88°47'35" E	26.21'



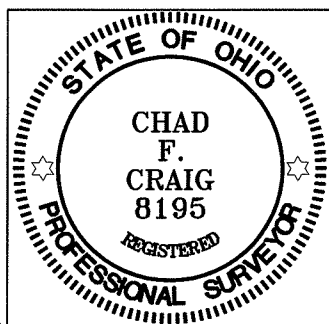
NORTH



BEARINGS ARE BASED ON AN ASSUMED MERIDIAN AND ARE INTENDED TO BE USED FOR ANGULAR DETERMINATION ONLY

LEGEND

- IRON PIN FOUND
- ⊗ 2" MAG NAIL SPIKE SET
- △ RAILROAD SPIKE SET
- ▲ RAILROAD SPIKE FOUND
- ⊗ 5/8" IRON PIN SET WITH CAP STAMPED "CRAIG 8195"



Chad F. Craig

SURVEY BY: CHAD F. CRAIG P.S. #8195
for SEILER & CRAIG SURVEYING INC.
52-1/2 NORTH MAIN STREET
MANSFIELD, OHIO 44902
(419) 525-3644
FAX (419) 525-3696

VERBAL APPROVAL
Jim SIMMERING
BLOOMINGGROVE ZONING
12-10-10

NEW SPLIT
RICHLAND COUNTY
TAX MAP OFFICE
EAK 12-13-10
INITIAL DATE
BB-293

THE SOUTH LINE OF
THE SE QTR. SEC. 31

SURVEY PLAT FOR
BEVIER

PART SE QTR. SEC. 31, T-23, R-18
BLOOMINGGROVE TOWNSHIP
RICHLAND COUNTY, OHIO

DATE: DEC. 7, 2010 SCALE: 1"=200'

BEVIER-7AC

SEILER & CRAIG SURVEYING, INC.

Douglas C. Seiler, PS & Chad F. Craig, PS

52 ½ North Main Street

Mansfield, Ohio 44902

419-525-3644 Fax: 419-525-3696

www.seilerandcraig.com

SURVEY DESCRIPTION

**PART OF THE SE QUARTER OF SECTION 31
BLOOMINGGROVE TOWNSHIP
RICHLAND COUNTY, OHIO**

Situated in the Township of Bloominggrove, County of Richland, State of Ohio and being a part of the Southeast Quarter of Section 31, of Township 23 North, Range 18 West, and being more particularly described as follows:

Commencing at the point of intersection of the south line of said quarter section and the centerline of Ganges Five Points Road (C.H. 207), said point being referenced by an iron pin set for reference on a bearing of North 89 degrees 16 minutes 05 seconds East and at a distance of 30.00 feet, Thence, North 21 degrees 43 minutes 09 seconds West with said centerline a distance of 285.07 feet to a point, said point referenced by an iron pin set on a bearing of North 89 degrees 16 minutes 05 seconds East and at a distance of 30.00 feet, said point being the place of beginning or the parcel herein described;

Thence, continuing North 21 degrees 43 minutes 09 seconds West with said centerline, a distance of 341.93 to a point referenced by an iron pin set on a bearing of North 43 degrees 48 minutes 47 seconds East and at a distance of 34.48 feet;

Thence, North 15 degrees 36 minutes 10 seconds West with said centerline, a distance of 21.89 feet and referenced by an iron pin set on a bearing of North 82 degrees 43 minutes 43 seconds East and at a distance of 30.00 feet, said point being the southwest corner of a parcel currently owned by J. and J. Studer (O.R.V. 822, Pg. 259);

Thence, North 82 degrees 43 minutes 43 seconds East with the south line of said Studer parcel, passing through said reference pin at 30.00 feet, a total distance of 203.27 feet to an iron pin set;

Thence, North 03 degrees 09 minutes 08 seconds West with the east line of said Studer parcel, a distance of 277.17 feet to an iron pin set on the south line of a parcel currently owned by C. and N. Miller (O.R.V. 1712, Pg. 296);

Thence, South 89 degrees 53 minutes 35 seconds East with said south line, a distance of 187.58 feet to an iron pin set on the southeast corner thereof, said iron pin being a point on the west line of a parcel currently owned by M.L. Snyder (O.R.V. 247, Pg. 37);

Thence, South 06 degrees 55 minutes 45 seconds East with said Snyder west line, a distance of 36.74 feet to an iron pin set on the southwest corner thereof;

Thence, North 87 degrees 04 minutes 15 seconds East with said south line, a distance of 186.98 feet to an iron pin set on the southeast corner of said Snyder parcel;

Thence, North 00 degrees 04 minutes 03 seconds East with the east line of said Snyder parcel, a distance of 30.95 feet;

Thence, North 88 degrees 47 minutes 35 seconds East a distance of 26.21 feet to an iron pin set;

Thence, South 01 degree 23 minutes 33 seconds East a distance of 639.57 feet to an iron pin set;

Thence, South 89 degrees 16 minutes 05 seconds West passing through an iron pin set for reference at 444.54 feet, a total distance of 474.54 feet to the place of beginning, containing 6.85 acres according to survey by Chad F. Craig P.S. #8195 for Seiler & Craig Surveying, Inc. on December 7, 2010, but subject to all easements of record and right of ways of record.

Iron pins set are 5/8" rods with caps stamped "CRAIG 8195".

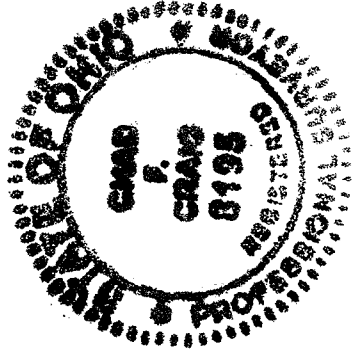
Bearings are based on an assumed meridian and are intended to be used for angular determination only.

NEW SPLIT
RICHLAND COUNTY
TAX MAP OFFICE

EAJ
INITIAL

12-13-10
DATE

BB-293



A handwritten signature in black ink that reads "Chad F. Craig".

Chad F. Craig P.S.#8195
for Seiler & Craig Surveying, Inc.