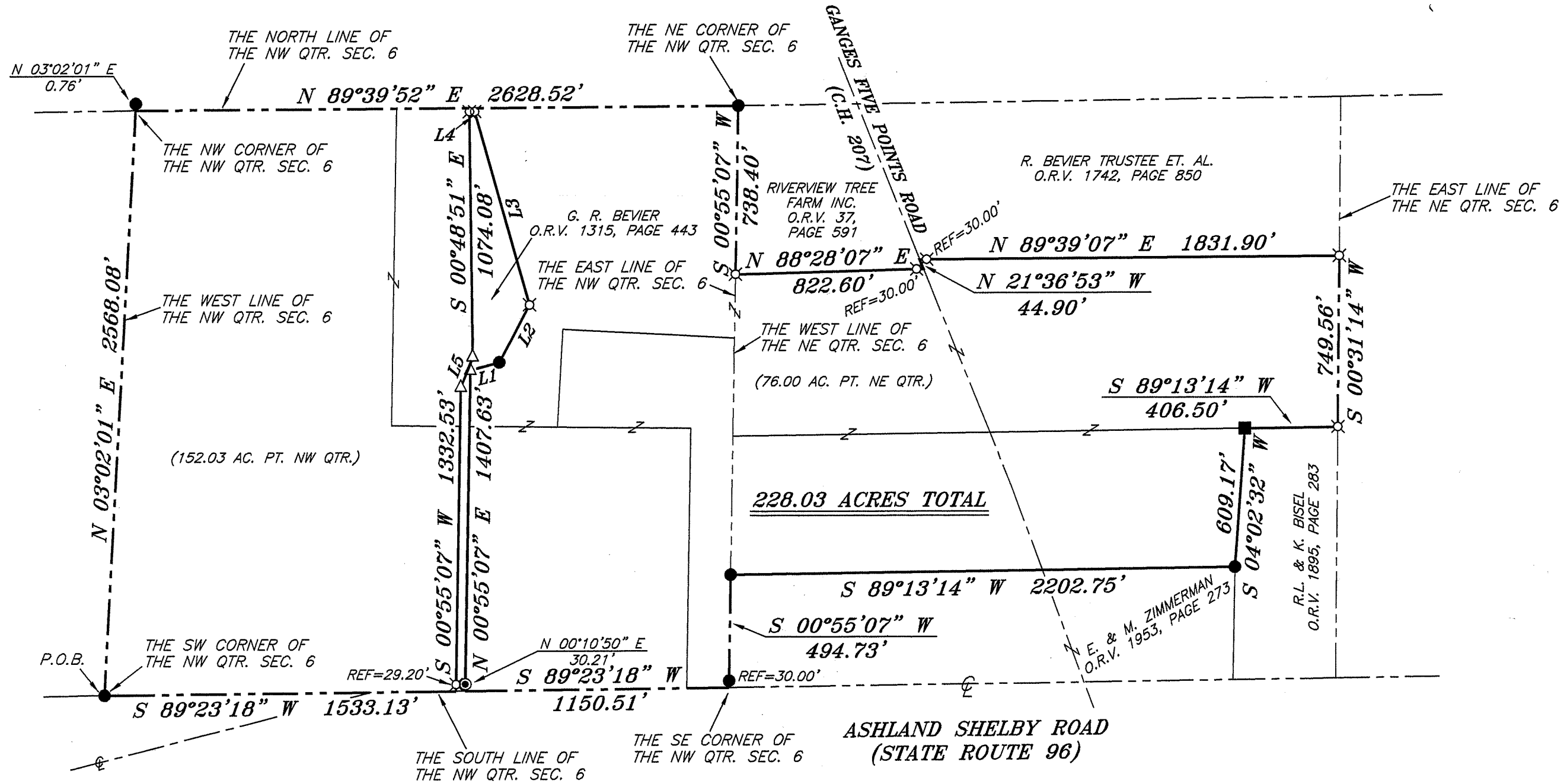
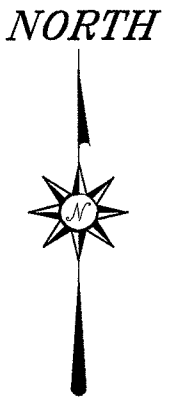


LINE	BEARING	DISTANCE
L1	N 75°17'17" E	130.75'
L2	N 27°41'27" E	283.90'
L3	N 15°48'33" W	881.84'
L4	S 89°22'53" W	22.68'
L5	S 21°07'47" W	144.07'

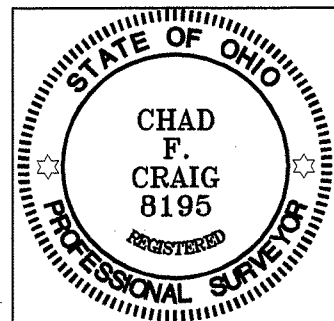
BEARINGS ARE BASED ON AN ASSUMED MERIDIAN AND ARE INTENDED TO BE USED FOR ANGULAR DETERMINATION ONLY



**228.03 ACRES TOTAL**

*Chad F. Craig*

SURVEY BY: CHAD F. CRAIG P.S. #8195  
for SEILER & CRAIG SURVEYING INC.  
52-1/2 NORTH MAIN STREET  
MANSFIELD, OHIO 44902  
(419) 525-3644  
FAX (419) 525-3696



NEW SURVEY  
OF EXISTING PARCEL  
RICHLAND COUNTY  
TAX MAP OFFICE  
EAK 12-13-10  
INITIAL DATE  
BB-292

**LEGEND**

- IRON PIN FOUND
- WOODEN POST FOUND
- △ RAILROAD SPIKE SET
- U.S.G.S. MONUMENT FOUND
- ⊗ 5/8" IRON PIN SET WITH CAP STAMPED "CRAIG 8195"

SURVEY PLAT FOR	
BEVIER	
PART NE & NW QTR. SEC. 6, T-22, R-18, FRANKLIN TOWNSHIP RICHLAND COUNTY, OHIO	
DATE: DEC. 8, 2010	SCALE: 1"=500'
BEVIER-GARY	

**SEILER & CRAIG SURVEYING, INC.**

*Douglas C. Seiler, PS & Chad F. Craig, PS*  
52 1/2 North Main Street  
Mansfield, Ohio 44902  
419-525-3644 Fax 419-525-3696  
*www.seilerandcraig.com*

**SURVEY DESCRIPTION**

**PART NE & NW QUARTERS SECTION 6  
FRANKLIN TOWNSHIP  
RICHLAND COUNTY, OHIO**

Situated in the Township of Franklin, County of Richland, State of Ohio and being a part of the Northeast the Northwest Quarters of Section 6, of Township 22 North, Range 18 West, and being more particularly described as follows:

Beginning for the same at an iron pin found and accepted as marking the southwest corner of the northwest quarter, Thence, North 03 degrees 02 minutes 01 second East with the west line of said quarter a distance of 2568.08 feet to a point marking the northwest corner of said quarter, said point referenced by an iron pin found on a bearing of North 03 degrees 02 minutes 01 second East and at a distance of 0.76 feet;

Thence, North 89 degrees 39 minutes 52 seconds East with the north line of said quarter a distance of 2628.52 feet to an iron pin found marking the northeast corner of said quarter, the same as being the northwest corner of a parcel currently owned by Riverview Tree Farm Inc. (deed reference: O.R.V. 37, Page 591);

Thence, South 00 degrees 55 minutes 07 seconds West with the east line of said quarter and the west line of said Riverview parcel a distance of 738.40 feet to an iron pin set marking the southwest corner of said Riverview parcel;

Thence, North 88 degrees 28 minutes 07 seconds East with the south line of said parcel and passing through an iron pin set for reference at a distance of 792.60 feet, a total distance of 822.60 feet to a point in the centerline of Ganges Five Points Road (C.H. 207), said point marking the southeast corner of said Riverview parcel;

Thence, North 21 degrees 36 minutes 53 seconds West with said centerline a distance of 44.90 feet to a point referenced by an iron pin set on a bearing of North 89 degrees 39 minutes 07 seconds East and at a distance of 30.00 feet, said point marking the southwest corner of a parcel currently owned by R. Bevier Trustee Et. Al. (deed reference: O.R.V. 1742, Page 850);

Thence, North 89 degrees 39 minutes 07 seconds East with the south line of said Bevier parcel and passing through said reference pin set, a total distance of 1831.90 feet to an iron pin set on the east line of the northeast quarter, said pin marking the southeast corner of said Bevier parcel;

Thence, South 00 degrees 31 minutes 14 seconds West with the east line of said quarter a distance of 749.56 feet to an iron pin set marking the northeast corner of a parcel currently owned by R. L. and K. Bisel (deed reference: O.R.V. 1895, Page 283);

Thence, South 89 degrees 13 minutes 14 seconds West with the north line of said Bisel parcel a distance of 406.50 feet to a wooden post found, said post marking the northwest corner of said Bisel parcel;

Thence, South 04 degrees 02 minutes 32 seconds West with the west line of said Bisel parcel a distance of 609.17 feet to an iron pin found marking the northeast corner of a parcel currently owned by E. & M. Zimmerman (deed reference: O.R.V. 1953, Page 273);

Thence, South 89 degrees 13 minutes 14 seconds West with the north line of said Zimmerman parcel a distance of 2202.75 feet to an iron pin found on the west line of said northeast quarter the same as being the east line of the northwest quarter, said pin also marking the northwest corner of said Zimmerman parcel;

Thence, South 00 degrees 55 minutes 07 seconds West with the east line of said northwest quarter and the west line of said Zimmerman parcel and passing through an iron pin found at

a distance of 464.73 feet, a total distance of 494.73 feet to a point marking the southeast corner of the said northwest quarter, said point also being in the centerline of Ashland Shelby Road (State Route 96), said point also marking the southwest corner of said Zimmerman parcel;

Thence, South 89 degrees 23 minutes 18 seconds West with the south line of said quarter and with said centerline a distance of 1150.51 feet to a point referenced by a U.S.G.S. Monument found on a bearing of North 00 degrees 10 minutes 50 seconds East and at a distance of 30.21 feet, said point marking the southeast corner of a parcel currently owned by G. R. Bevier (deed reference: O.R.V. 1315, Page 443);

Thence, with said Bevier parcel the following eight (8) courses and distances:

1. North 00 degrees 55 minutes 07 seconds East a distance of 1407.63 feet to a railroad spike set;
2. North 75 degrees 17 minutes 17 seconds East a distance of 130.75 feet to an iron pin found;
3. North 27 degrees 41 minutes 27 seconds East a distance of 283.90 feet to an iron pin set;
4. North 15 degrees 48 minutes 33 seconds West a distance of 881.84 feet to an iron pin set;
5. South 89 degrees 22 minutes 53 seconds West a distance of 22.68 feet to an iron pin set;
6. South 00 degrees 48 minutes 51 seconds East a distance of 1074.08 feet to a railroad spike set;
7. South 21 degrees 07 minutes 47 seconds West a distance of 144.07 feet to a railroad spike set;
8. South 00 degrees 55 minutes 07 seconds West passing through an iron pin set for reference at a distance of 1303.33 feet, a total distance of 1332.53 feet to a point on the south line of said quarter and in said centerline;

Thence, South 89 degrees 23 minutes 18 seconds West with the south line of said quarter a distance of 1533.13 feet to the place of beginning, containing 228.03 acres of which 76.00 acres are located in part NE quarter and 152.03 acres are located in part NW quarter, according to survey by Chad F. Craig, Professional Surveyor #8195 for Seiler & Craig Surveying, Inc., on December 8, 2010, but subject to all right of ways and easements of record.

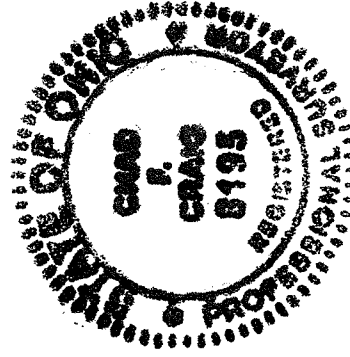
Iron pins set are 5/8" rods with caps stamped "CRAIG 8195".

Bearings are based on an assumed meridian and are intended to be used for angular determination only.

NEW SURVEY  
OF EXISTING PARCEL  
RICHLAND COUNTY,  
TAX MAP OFFICE

INITIAL EF DATE 12-13-10

BB-292



A handwritten signature in black ink that reads "Chad F. Craig".

Chad F. Craig P.S. #8195  
for Seiler & Craig Surveying, Inc.