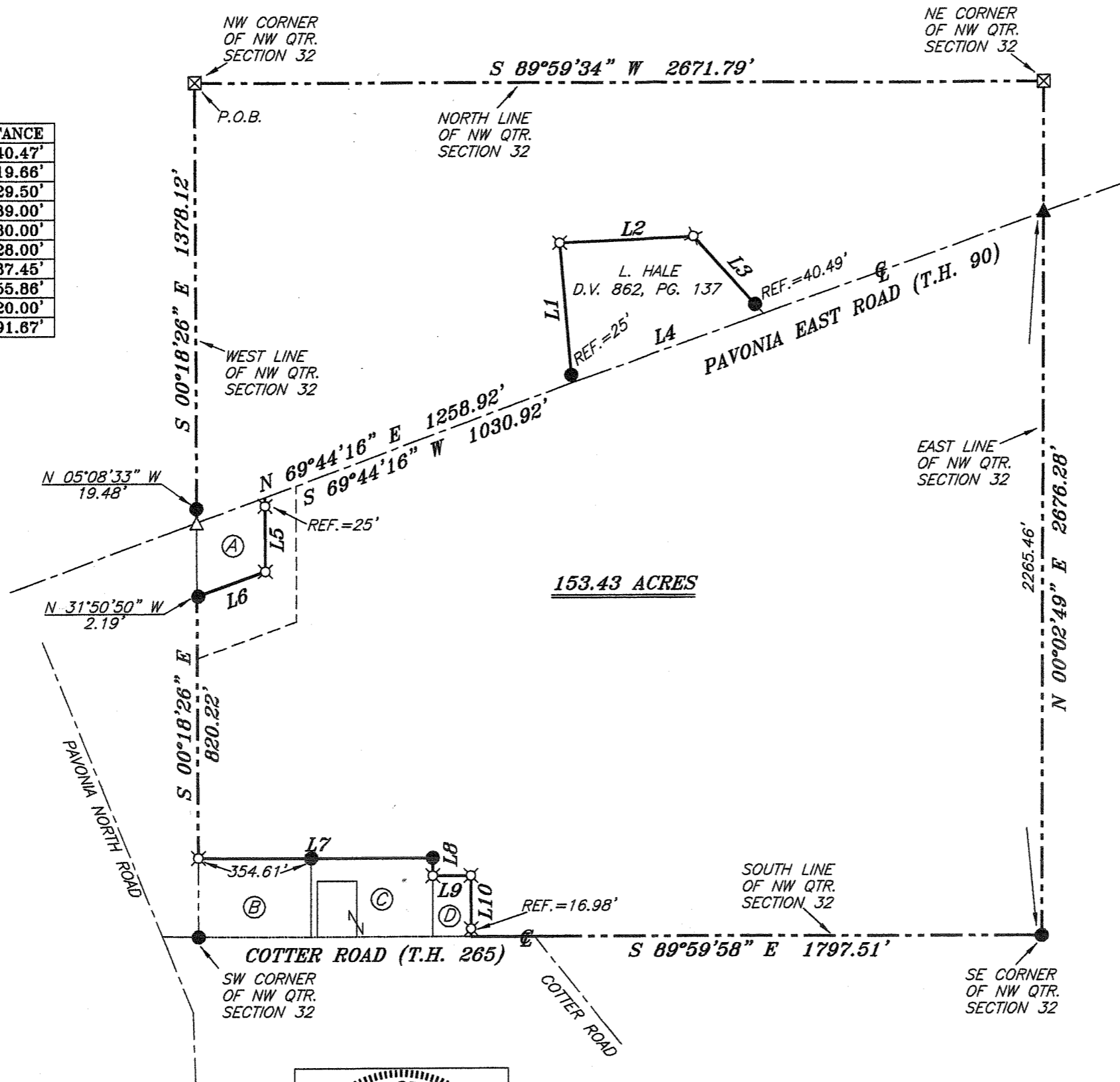


LINE	BEARING	DISTANCE
L1	N 05°03'01" W	440.47'
L2	N 87°12'18" E	419.66'
L3	S 42°11'46" E	329.50'
L4	S 70°19'39" W	639.00'
L5	S 00°18'26" E	230.00'
L6	S 69°44'16" W	228.00'
L7	S 89°59'32" E	737.45'
L8	S 00°22'27" E	55.86'
L9	S 89°59'58" E	120.00'
L10	S 00°22'27" E	191.67'



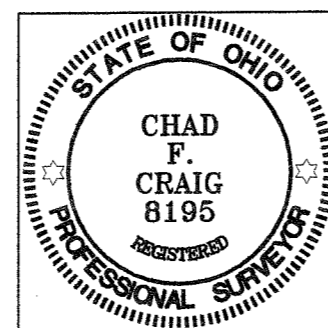
- (A) DEANA SEITZ O.R.V. 1986, PAGE 592
- (B) M. RAUSCHER O.R.V. 880, PAGE 800
- (C) B. & V. EDMONDS O.R.V. 1295, PAGE 169
- (D) R. LEWIS O.R.V. 1237, PAGE 236

LEGEND

- IRON PIN FOUND
- △ RAILROAD SPIKE SET
- ▲ RAILROAD SPIKE FOUND
- ⊠ CONCRETE POST WITH CHISELED "X"
- ⊗ 5/8" IRON PIN SET WITH CAP STAMPED "CRAIG 8195"

NEW SURVEY
OF EXISTING PARCEL
RICHLAND COUNTY
TAX MAP OFFICE
EAK 10-19-10
INITIAL DATE
BB-251

Chad F. Craig
SURVEY BY: CHAD F. CRAIG P.S. #8195
for SEILER & CRAIG SURVEYING INC.
52-1/2 NORTH MAIN STREET
MANSFIELD, OHIO 44902
(419) 525-3644
FAX (419) 525-3696



BEARINGS ARE BASED ON AN ASSUMED MERIDIAN AND ARE INTENDED TO BE USED FOR ANGULAR DETERMINATION ONLY.

SURVEY PLAT FOR	
LEE HALE	
PART NW QTR. SECTION 32, T-24, R-17 WELLER TOWNSHIP RICHLAND COUNTY, OHIO	
DATE: OCTOBER 8, 2010	SCALE: 1"=400'
HALE_2010	

SEILER & CRAIG SURVEYING, INC.

Douglas C. Seiler, PS & Chad F. Craig, PS

52 1/2 North Main Street

Mansfield, Ohio 44902

419-525-3644 Fax 419-525-3696

www.seilerandcraig.com

SURVEY DESCRIPTION

**PART NW QUARTER SECTION 32
WELLER TOWNSHIP
RICHLAND COUNTY, OHIO**

Situated in the Township of Weller, County of Richland, State of Ohio and being a part of the Northwest Quarter of Section 32, of Township 24 North, Range 17 West, and being more particularly described as follows:

Beginning for the same at a concrete post with chiseled "X" found and accepted as marking the northwest corner of said quarter, Thence, South 00 degrees 18 minutes 26 seconds East with the west line of said quarter a distance of 1378.12 feet to a railroad spike set in the centerline of Pavonia East Road (T.H. 90), said railroad spike referenced by an iron pin found on a bearing of North 05 degrees 08 minutes 33 seconds West and at a distance of 19.48 feet;

Thence, North 69 degrees 44 minutes 16 seconds East with said centerline a distance of 1258.92 feet to a point referenced by an iron pin found on a bearing of North 05 degrees 03 minutes 01 second West and at a distance of 25.00 feet, said point marking the southwest corner of a parcel currently owned by L. Hale (deed reference: D.V. 862, Page 137);

Thence, with said Hale parcel the following four (4) courses and distances;

1. North 05 degrees 03 minutes 01 second West passing through said referenced pin found, a total distance of 440.47 feet to an iron pin set;
2. North 87 degrees 12 minutes 18 seconds East a distance of 419.66 feet to an iron pin set;
3. South 42 degrees 11 minutes 46 seconds East passing through an iron pin found for reference at a distance of 289.01 feet, a total distance of 329.50 feet to a point in the centerline of said road;
4. South 70 degrees 19 minutes 39 seconds West with said centerline a distance of 639.00 feet to a point referenced by an iron pin found on a bearing of North 05 degrees 03 minutes 01 second West and at a distance of 25.00 feet;

Thence, South 69 degrees 44 minutes 16 seconds West with said centerline a distance of 1030.92 feet to a point referenced by an iron pin set on a bearing of South 00 degrees 18 minutes 26 seconds East and at a distance of 25.00 feet, said point marking the northeast corner of a parcel currently owned by Deana Seitz (deed reference: O.R.V. 1986, Page 592);

Thence, South 00 degrees 18 minutes 26 seconds East with the east line of said Seitz parcel and passing through said iron pin set, a total distance of 230.00 feet to an iron pin set marking the southeast corner of said parcel;

Thence, South 69 degrees 44 minutes 16 seconds West with the south line of said parcel a distance of 228.00 feet to a point on the west line of said quarter referenced by an iron pin found on a bearing of North 31 degrees 50 minutes 50 seconds West and at a distance of 2.19 feet, said point marking the southwest corner of said parcel;

Thence, South 00 degrees 18 minutes 26 seconds East with the east line of said quarter a distance of 820.22 feet to an iron pin set marking the northwest corner of a parcel currently owned by M. Rauscher (deed reference: O.R.V. 880, Page 800);

Thence, South 89 degrees 59 minutes 32 seconds East with the north line of said Rauscher parcel and the easterly prolongation thereof, and passing through an iron pin found at a distance of 354.61 feet, a total distance of 737.45 feet to an iron pin found marking the northeast corner of a parcel currently owned by B. & V. Edmonds (deed reference: O.R.V. 1295, Page 169);

Thence, South 00 degrees 22 minutes 27 seconds East with the east line of said Edmonds parcel a distance of 55.86 feet to an iron pin set marking the northwest corner of a parcel currently owned by R. Lewis (deed reference: O.R.V. 1237, Page 236);

Thence, South 89 degrees 59 minutes 58 seconds East with the north line of said Lewis parcel a distance of 120.00 feet to an iron pin set marking the northeast corner of said parcel;

Thence, South 00 degrees 22 minutes 27 seconds East with the east line of said parcel and passing through an iron pin set for reference at a distance of 174.69 feet, a total distance of 191.67 feet to a point on the south line of said quarter, said point marking the southeast corner of said parcel, said point also marking a point in the centerline of Coffey Road (T.H. 265);

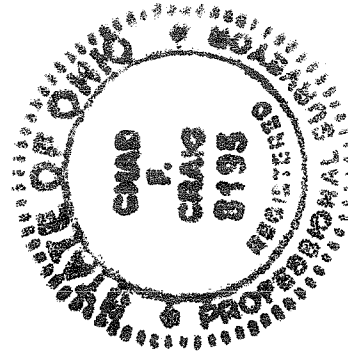
Thence, South 89 degrees 59 minutes 58 seconds East with the south line of said quarter a distance of 1797.51 feet to an iron pin found marking the southeast corner of said quarter;

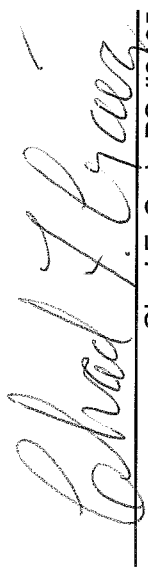
Thence, North 00 degrees 02 minutes 49 seconds East with the east line of said quarter and passing through a railroad spike found in the centerline of Pavonia East Road at a distance of 2265.46 feet, a total distance of 2676.28 feet to a concrete post found with chiseled "X" marking the northeast corner of said quarter;

Thence, South 89 degrees 59 minutes 34 seconds West with the north line of said quarter a distance of 2671.79 feet to the place of beginning, containing 153.43 acres, according to survey by Chad F. Craig, Professional Surveyor #8195 for Seiler & Craig Surveying, Inc., on October 8, 2010, but subject to all right of ways and easements of record.

Iron pins set are 5/8" rods with caps stamped "CRAIG 8195".

Bearings are based on an assumed meridian and are intended to be used for angular determination only.




Chad F. Craig PS #8195
for Seiler & Craig Surveying, Inc.

NEW SURVEY
OF EXISTING PARCEL
RICHLAND COUNTY
TAX MAP OFFICE
EAK 10-19-10
INITIAL DATE
BB-251