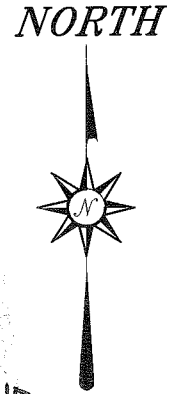


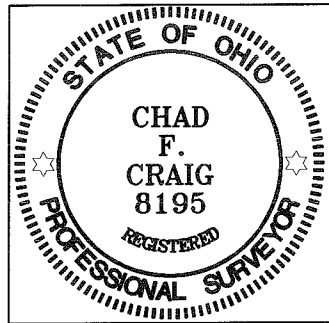
LINWOOD PLACE 50' R/W

BEARINGS ARE BASED ON SURVEY R-101 ON FILE AT THE RICHLAND COUNTY TAX MAP OFFICE AND ARE INTENDED TO BE USED FOR ANGULAR DETERMINATION ONLY



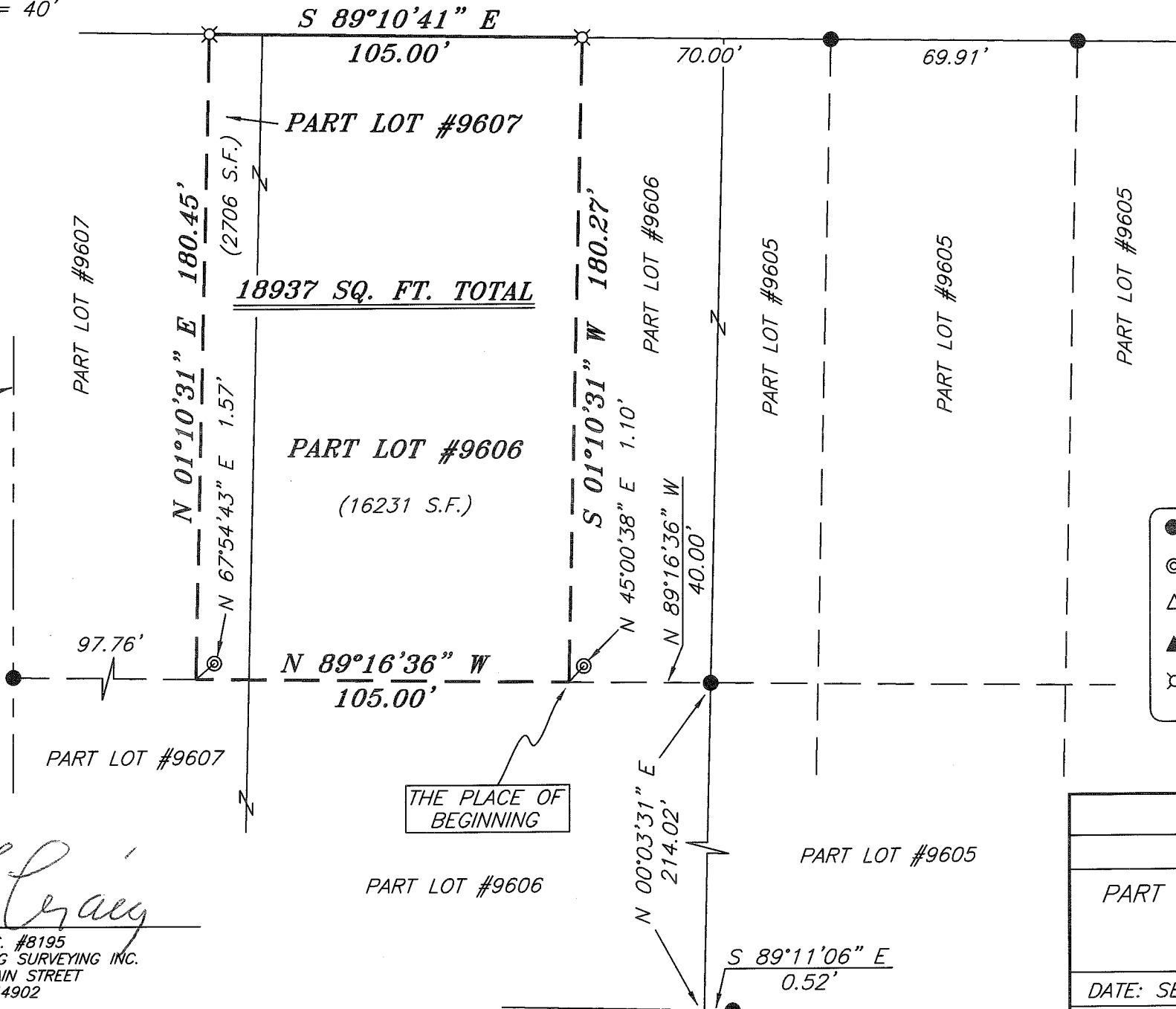
NEW SURVEY
OF EXISTING PARCEL
RICHLAND COUNTY
TAX MAP OFFICE
EAC 10-8-10
INITIAL DATE
BB-245

THE EAST R/W LINE
OF TRIMBLE ROAD



Chad F. Craig

SURVEY BY: CHAD F. CRAIG P.S. #8195
for SEILER & CRAIG SURVEYING INC.
52-1/2 NORTH MAIN STREET
MANSFIELD, OHIO 44902
(419) 525-3644
FAX (419) 525-3696



LEGEND

- IRON PIN FOUND
- ⊙ PIPE FOUND
- △ RAILROAD SPIKE SET
- ▲ RAILROAD SPIKE FOUND
- ⊗ 5/8" IRON PIN SET WITH CAP STAMPED "CRAIG 8195"

SURVEY PLAT FOR	
WESTWOOD	
PART LOT #9606 & PART LOT #9607	
CITY OF MANSFIELD	
RICHLAND COUNTY, OHIO	
DATE: SEPT. 28, 2010	SCALE: 1"=40'
LINWOODPL-975	

SEILER & CRAIG SURVEYING, INC.

Douglas C. Seiler, PS & Chad F. Craig, PS
52 1/2 North Main Street
Mansfield, Ohio 44902
419-525-3644 Fax 419-525-3696
www.seilerandcraig.com

SURVEY DESCRIPTION

PART LOT #9606 & PART LOT #9607
CITY OF MANSFIELD,
RICHLAND COUNTY, OHIO

Situated in the City of Mansfield, County of Richland, State of Ohio and being known as Part of Lot #9606 and Part of Lot #9607 of the consecutively numbered lots in said city, and being more particularly described as follows:

Commencing at a point marking the southeast corner of Lot #9606 referenced by an iron pin found on a bearing of South 89 degrees 11 minutes 06 seconds East and at a distance of 0.52 feet, Thence, North 00 degrees 03 minutes 31 seconds East with the east line of said lot a distance of 214.02 feet to an iron pin found, Thence, North 89 degrees 16 minutes 36 seconds West a distance of 40.00 feet to a point referenced by a pipe found on a bearing of North 45 degrees 00 minutes 38 seconds East and at a distance of 1.10 feet, the place of beginning of the parcel herein described;

Thence, continuing North 89 degrees 16 minutes 36 seconds West a distance of 105.00 feet to a point referenced by a pipe found on a bearing of North 67 degrees 54 minutes 43 seconds East and at a distance of 1.57 feet;

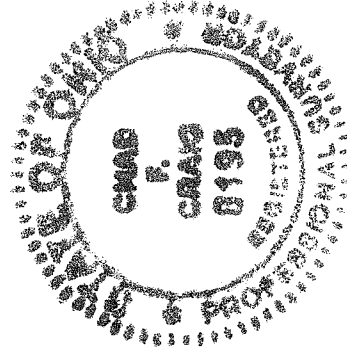
Thence, North 01 degree 10 minutes 31 seconds East a distance of 180.45 feet to an iron pin set on the north line of Lot #9607;

Thence, South 89 degrees 10 minutes 41 seconds East with said north line and the easterly prolongation thereof a distance of 105.00 feet to an iron pin set on the north line of Lot #9606;

Thence, South 01 degree 10 minutes 31 seconds West a distance of 180.27 feet to the place of beginning, containing a total of 18937 square feet of which 16231 square feet are located within Part of Lot #9606 and 2706 square feet are located within Part of Lot #9607 according to survey by Chad F. Craig P.S. #8195 for Seiler and Craig Surveying, Inc. on September 28, 2010 but subject to all right of ways and easements of record.

Iron pins set are 5/8" rods with caps stamped "CRAIG 8195".

Bearings are based on survey R-101 on file at the Richland County Tax Map Office and are intended to be used for angular determination only.



NEW SURVEY
OF EXISTING PARCEL
RICHLAND COUNTY
TAX MAP OFFICE
EAK INITIAL
10-8-10 DATE
BB-245

A handwritten signature of Chad F. Craig in cursive script.

Chad F. Craig P.S. #8195
for Seiler and Craig Surveying, Inc.